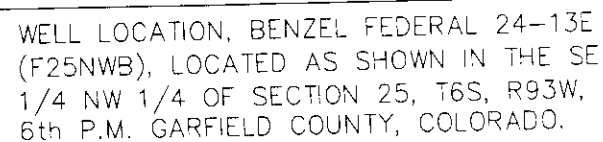


ENCANA OIL & GAS (USA) INC



1. Well footages are measured at right angles to the Section Lines.
2. Bearings are based on Global Positioning Satellite observations.
3. G.P.S. Operator:
C.D. SLAUGH, (PDOP) = 2.4

IMPROVEMENT NOTE:

See addendum to legal plat (sheet 2v)
for visible improvements within 400' of
the proposed well pad.

THIS IS TO CERTIFY THAT THE ABOVE PLAT WAS
PREPARED FROM FIELD NOTES OF ~~WARRANT~~ SURVEYS
MADE BY ME OR UNDER MY SUPERVISION. LOCATION
HAS BEEN STAKED ON THE GROUND AS SHOWN ON THE
PLAT, AND THAT THE SAME ARE TRUE AND CORRECT
TO THE BEST OF MY KNOWLEDGE AND BELIEF.

REGISTERED LAND SURVEYOR
REGISTRATION No. 30125
STATE OF COLORADO

TRI STATE LAND SURVEYING & CONSULTING

180 NORTH VERNAL AVE. - VERNAL, UTAH 84078
(435) 781-2501

DATE SURVEYED:
11-08-10

SURVEYED BY: C.D.S.

SHEET

DATE DRAWN:
02-28-11


DRAWN BY: L.C.S.

 $2t$

REVISED:
L.C.S. 03-24-11

SCALE: 1" = 1000'

OF 11

 = SECTION CORNERS LOCATED

Basis of elevation is the Rifle 2 Triangulation Station. 39°31'53.80" N Lat. & 107°47'07.78" W Long. (NAD 83). Elevation = 5323.1' (NAVD88).

NAD 83 (SURFACE LOCATION)

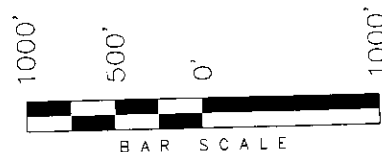
LATITUDE = 39°30'00.51"
(39.500141)

LONGITUDE = 107°43'34.75"
(107.726319)

T6S, R93W, 6th P.M.

ENCANA OIL & GAS (USA) INC

TARGET BOTTOM HOLE, BENZEL FEDERAL 24-13E (F25NWB), LOCATED AS SHOWN IN THE SW 1/4 SW 1/4 OF SECTION 24, T6S, R93W, 6th P.M. GARFIELD COUNTY, COLORADO.



NOTES:

1. Well footages are measured at right angles to the Section Lines.
2. Bearings are based on Global Positioning Satellite observations.

THIS IS TO CERTIFY THAT THE ABOVE PLAT WAS PREPARED FROM FIELD NOTES OF SURVEYS MADE BY ME OR UNDER MY SUPERVISION. THE LOCATION HAS BEEN STAKED ON THE GROUND AS SHOWN ON THE PLAT, AND THAT THE SAME ARE TRUE AND CORRECT TO THE BEST OF MY KNOWLEDGE AND BELIEF.

REGISTERED LAND SURVEYOR
REGISTRATION NO. 30125
STATE OF COLORADO

TRI STATE LAND SURVEYING & CONSULTING

180 NORTH VERNAL AVE. - VERNAL, UTAH 84078
(435) 781-2501

DATE SURVEYED:
11-08-10

SURVEYED BY: C.D.S.

SHEET

DATE DRAWN:
02-28-11

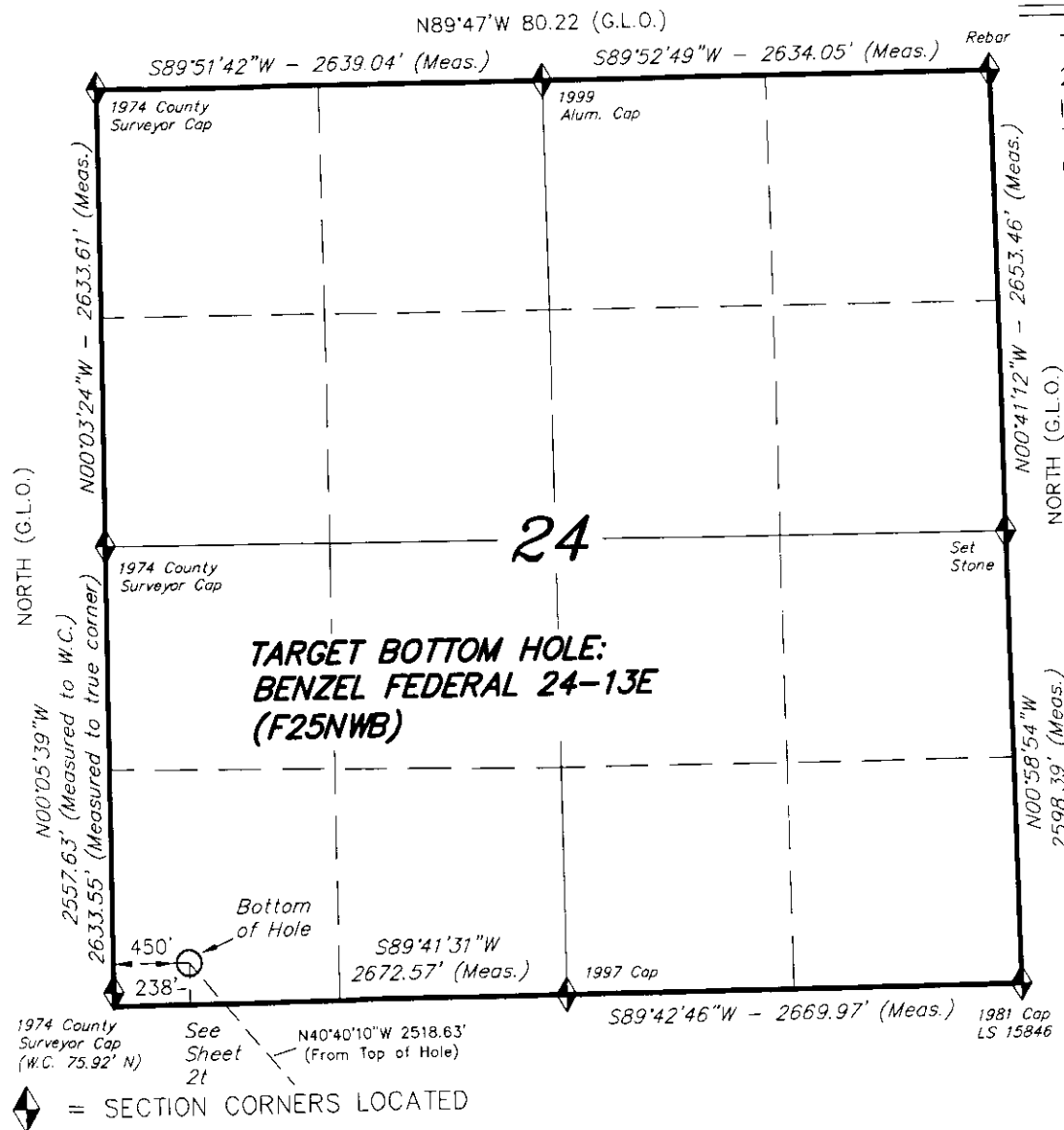
DRAWN BY: L.C.S.

2^{tt}

REVISED:
L.C.S. 03-24-11

SCALE: 1" = 1000'

OF 11



1974 County
Surveyor Cap
(W.C. 75.92' N)

See
Sheet
2t

N40°40'10\"W 2518.63'
(From Top of Hole)

S89°42'46\"W - 2669.97' (Meas.)

1981 Cap
LS 15846

◆ = SECTION CORNERS LOCATED

Basis of elevation is the Rifle 2 Triangulation Station. 39°31'53.80\" N Lat. & 107°47'07.78\" W Long. (NAD 83). Elevation = 5323.1' (NAVD88).