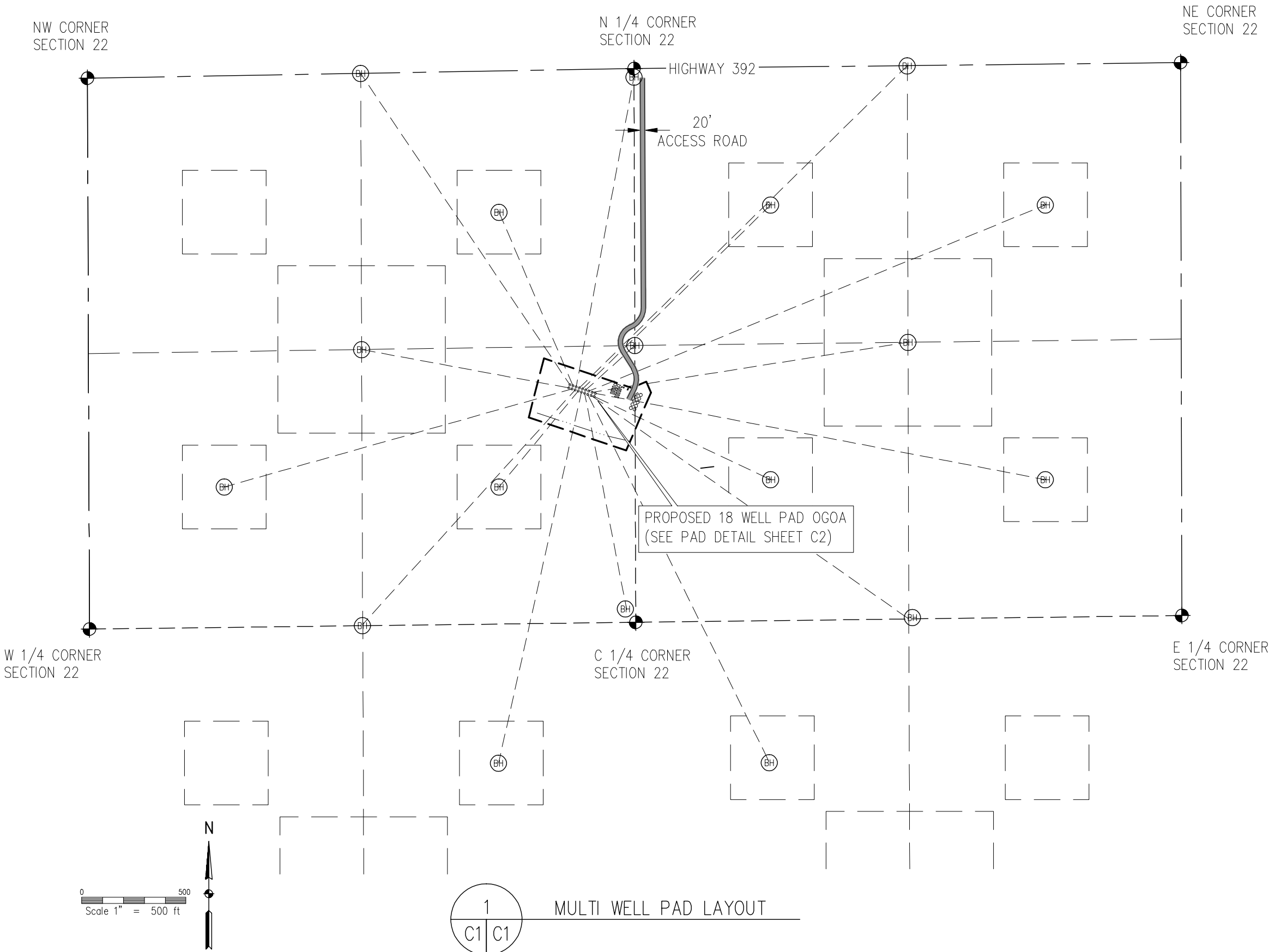



# RBF 392 VENTURES – 18 WELL PAD



 710.11TH AVE. SUITE 105 GRIFFIN, GA 30201 (770) 353-7600 FAX (770) 353-7601		DESIGN	R. BEHNING	DR	CHK
		SUPV		CH ENGR	
SUBMITTED BY (FIRM MEMBER - TITLE)		DATE			
REVISION DESCRIPTION		PREPARED BY	DATE	APPROVED	
RBF MINERALS					
TOWN OF WINDSOR					
WELD COUNTY					
RBF 392 VENTURES					
SECTION 22, T6N, R67W					
PAD LAYOUT					
APPROVED DATE					
DRAWING PROGRESS DATES					
XX/XX/XX INITIAL SUBMITTAL					
XX/XX/XX REVISED PER					
DRAWING SIZE		11" x 17"			
SURVEY INFO		2010			
DRAWING NAME					
FILE NAME					
SHEET 1 OF 2					
C1					