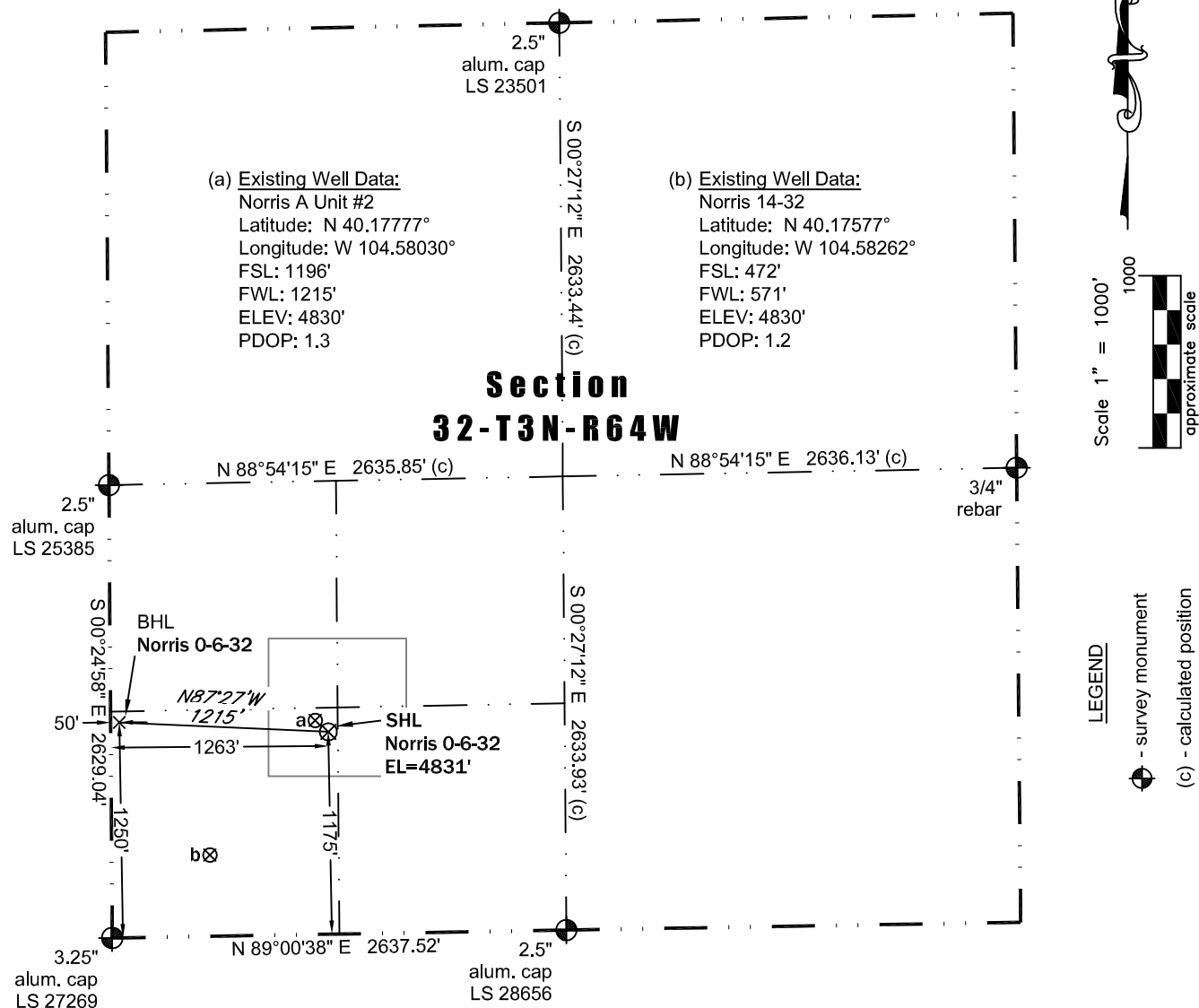


**PLS Group, LLC**

109 Coronado Ct. - Building No. 7  
Fort Collins, Colorado 80525  
P. 970-282-3446 Fx. 970-377-6767

**WELL LOCATION CERTIFICATE**

In accordance with a request from Dave Bale of EnCana Oil & Gas (USA) Inc., PLS Group, LLC has determined the location of the **Norris 0-6-32** well site to be SHL: 1175' FSL and 1263' FWL, (BHL 1250' FSL and 50' FWL) as measured at ninety (90) degrees from the section lines of Section 32, Township 3 North, Range 64 West, 6th Principal Meridian, County of Weld, CO.

**Proposed Surface Hole Data:**

Latitude: N 40.17771° (BHL 40.17790°)  
Longitude: W 104.58013° (BHL 104.58447°)  
PDOP: 3.0

**Nearest:**

Building 2,334' southwest  
Public Road 6,330' west  
Property Line 1,175' south  
Existing Well: Norris A Unit #2 53' northwest  
Above Ground Utility 6,312' west  
Railroad 29,830' southeast  
Well Window: SHL is 258' inside

**Notes:**

- 1) Bearings and distances based on NAD 83 Colorado North State Plane Coordinates using RTK GPS observations taken 4/29/11 by operator Tom Winans.
- 2) Conversion factor to ground (1.000271483).
- 3) Elevations based on NAVD 88 GPS heights and Geoid 2003 corrections.
- 4) See improvement map for visible improvements within 400' of pad site.
- 5) The surface use is agricultural field.

**NOTICE:** According to Colorado law you MUST commence any legal action based upon any defect in this W.L.C. within three years after you first discover such defect. In no event may any action based upon any defect in this W.L.C. be commenced more than ten years from this said date of the certification shown hereon.

I hereby certify that this Well Location Certificate was prepared by me or under my direct supervision on 5/4/2011 for and on behalf of EnCana Oil & Gas (USA) Inc. That it is not a Land Survey Plat or an Improvement Survey Plat and that it is not to be relied upon for establishment of fences, buildings, or other future improvement lines.

38219  
5-4-2011  
PROFESSIONAL LAND SURVEYOR

John Robert McGehee LS#38219  
Well: Norris 0-6-32 WLC