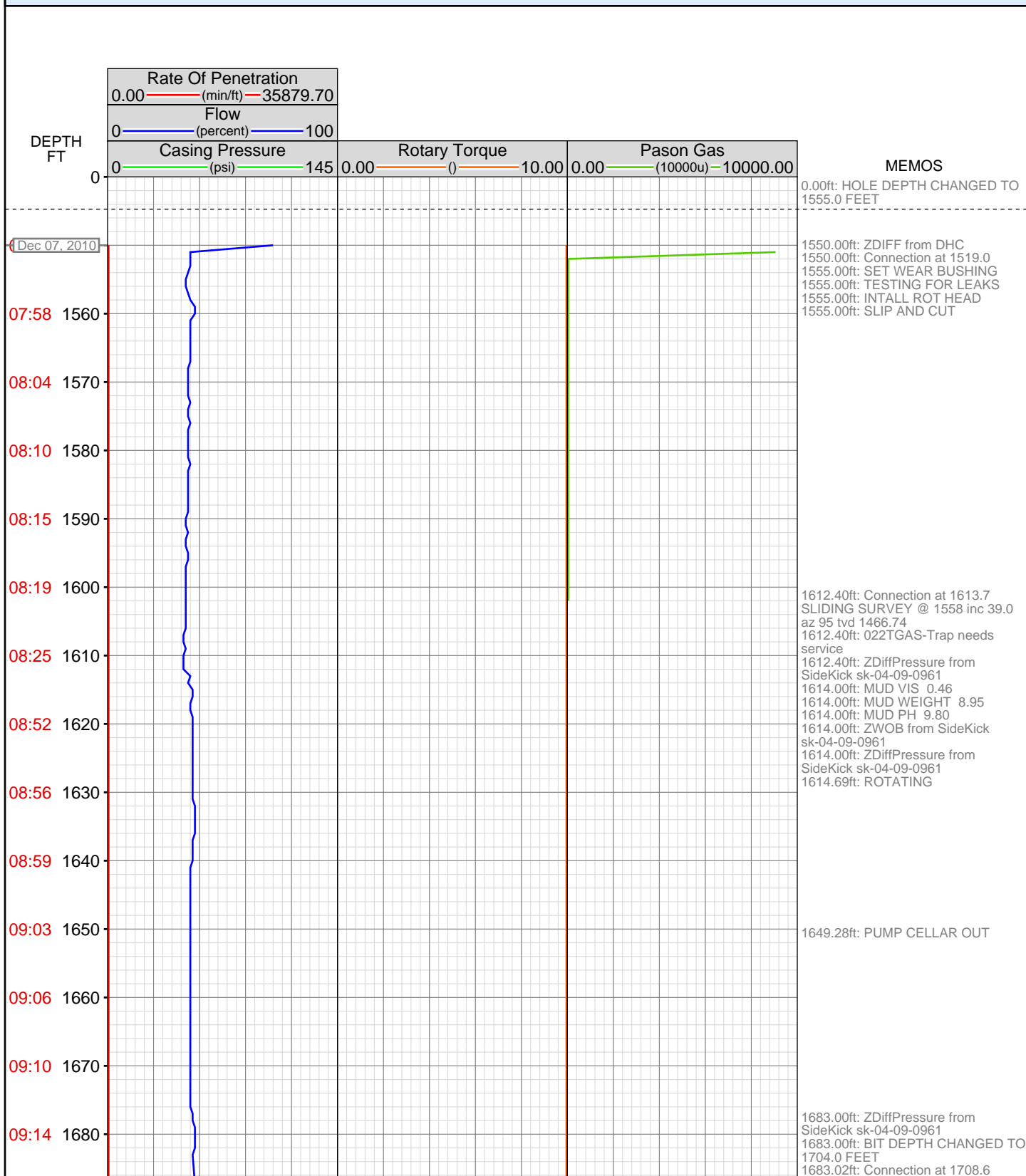


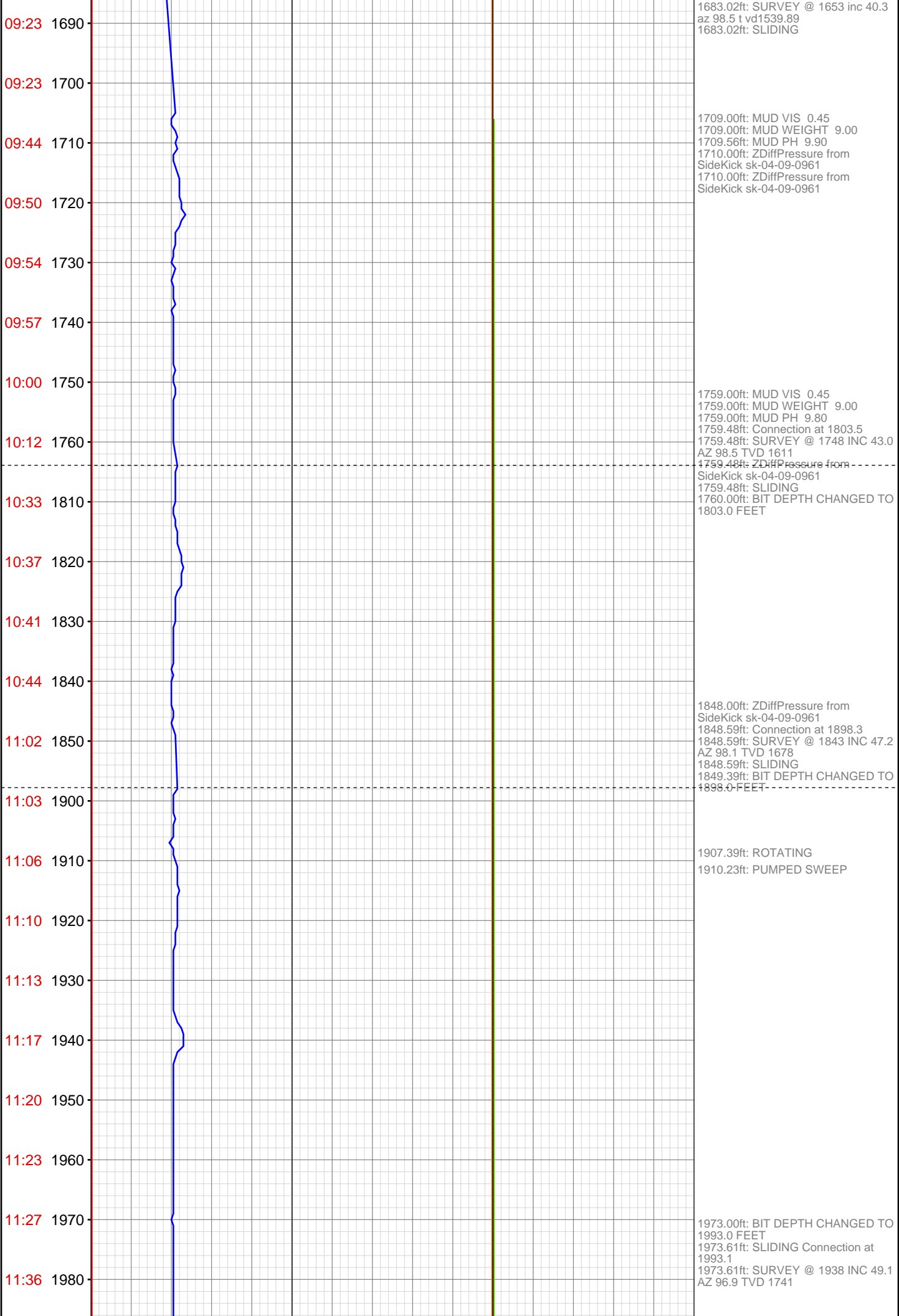
DataHub EDR Log

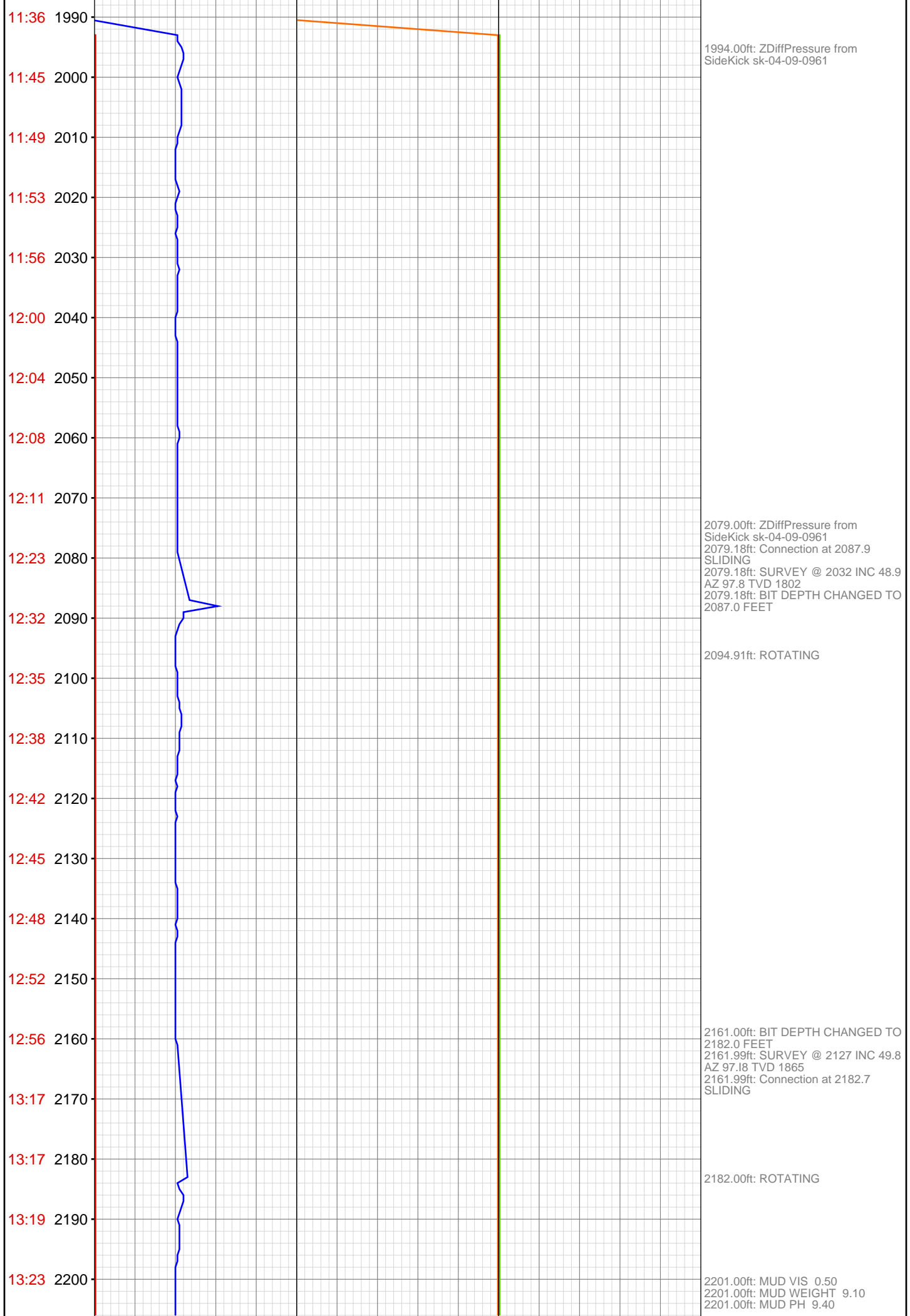
Wed Dec 15, 2010 07:21:44
Well Dossier 1291678747
Marilyn Tucker

OPERATOR: EnCana Oil & Gas (USA), Inc.
WELL: MF 10B EO9 696
FIELD:
LOCATION: SEC9 TWP65 RNG96W
COUNTRY: USA
RIG: Pat-UTI 326

CONTRACTOR: Patterson-UTI Drilling Company
UNIQUE WELL ID: 05-045-14993
SPUD DATE: Dec 07, 2010 08:00
RELEASE DATE: Dec 12, 2010 15:00







13:26 2210
13:29 2220
13:34 2230
13:38 2240
13:42 2250
13:45 2260
14:14 2270
14:17 2280
14:21 2290
14:25 2300
14:29 2310
14:58 2320
15:01 2380
15:04 2390
15:07 2400
15:10 2410
15:14 2420
15:18 2430
15:22 2440
15:26 2450
15:43 2460
15:44 2470



2227.22ft: PUMPED SWEEP

2266.14ft: Connection at 2277.4
2266.14ft: SURVEY @ 2222 INC 49.5
AZ 97.3 TVD 1926
2266.14ft: SLIDING

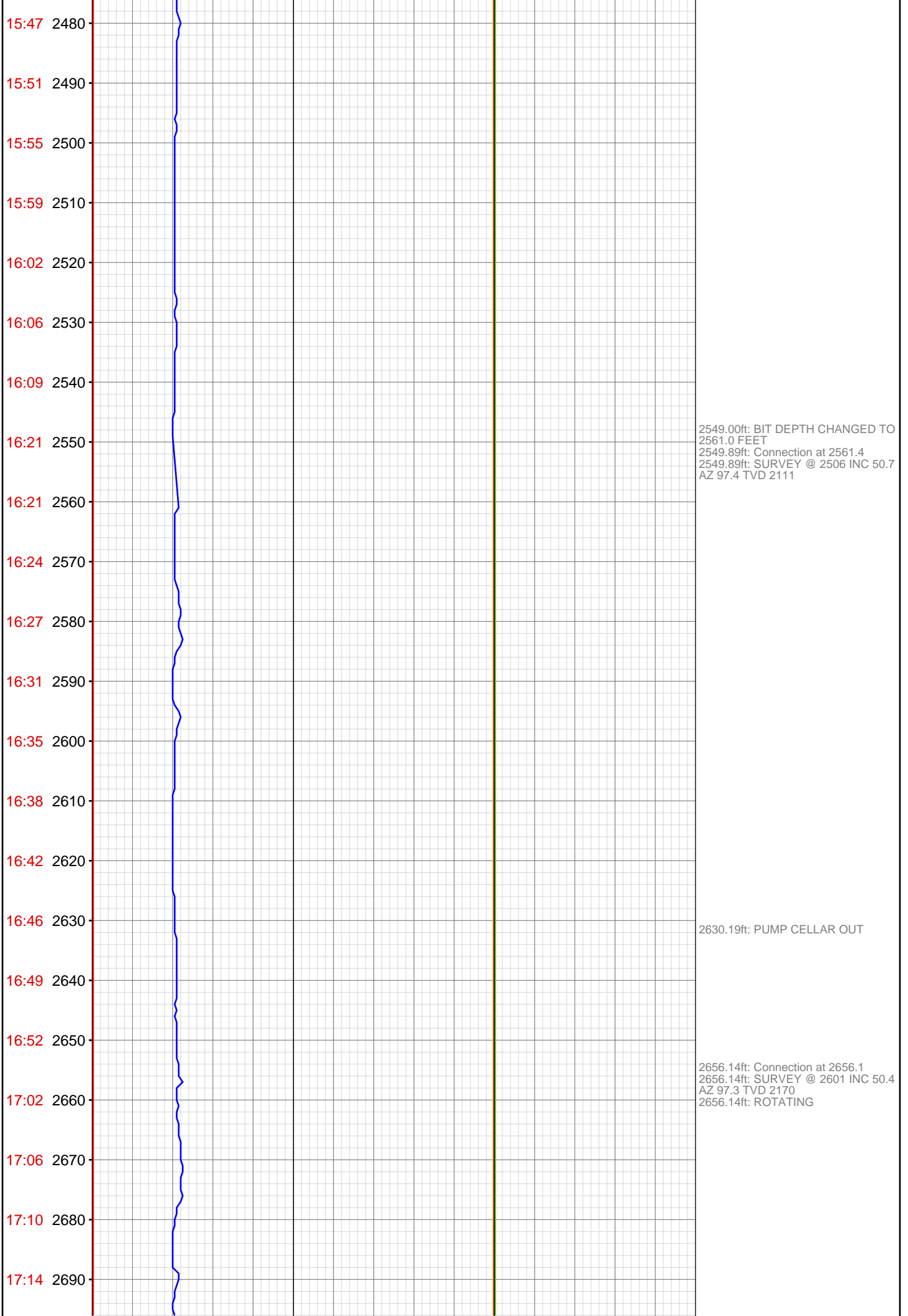
2305.00ft: MUD VIS 0.55
2305.00ft: MUD WEIGHT 9.10
2305.00ft: MUD PH 9.00

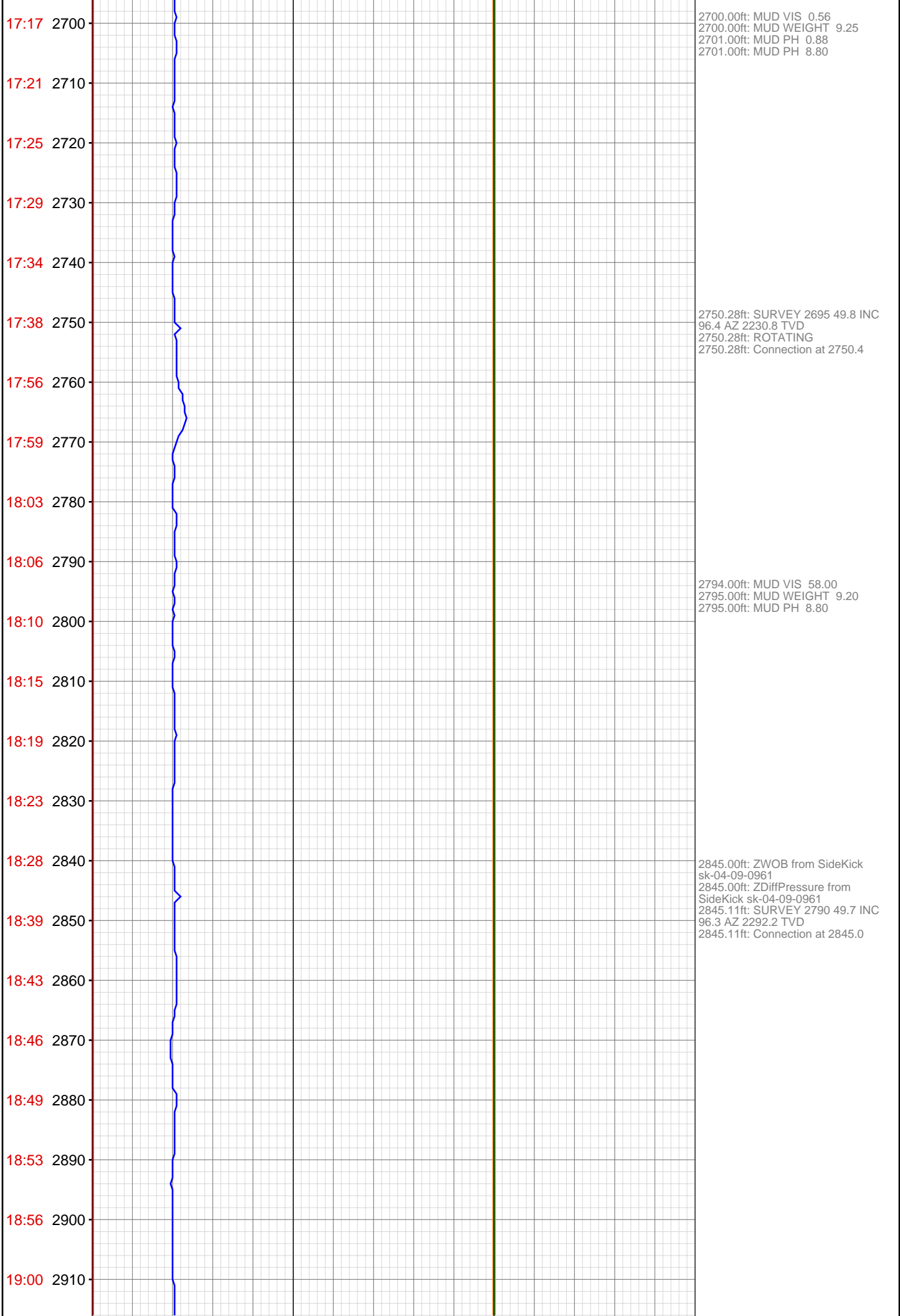
2317.00ft: BIT DEPTH CHANGED TO 2372.0 FEET
2317.78ft: SURVEY @ 2317 inc 49.2
az 98.2 tvd 1988
2317.78ft: Connection at 2372.2
2317.78ft: SLIDING

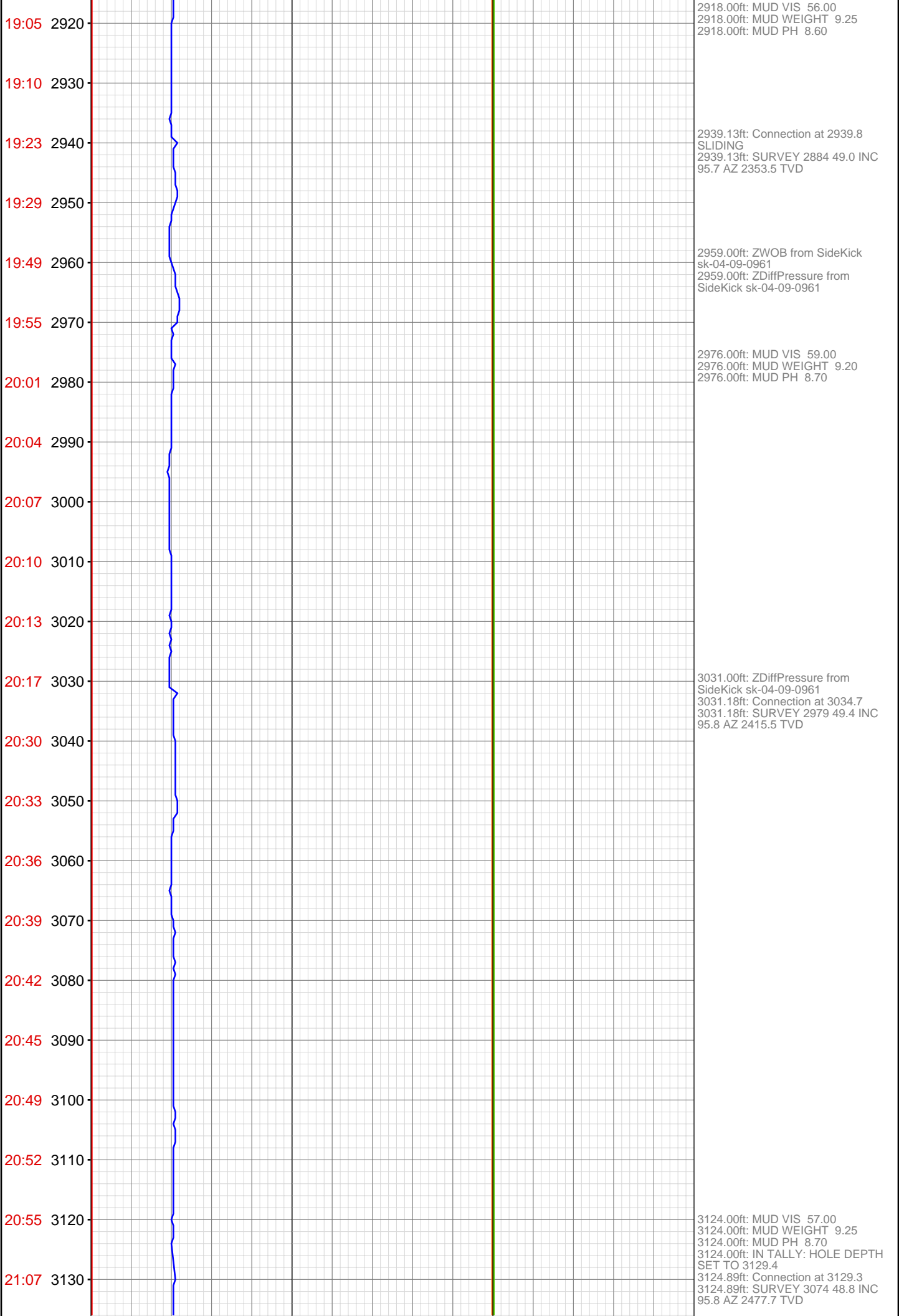
2413.00ft: MUD VIS 0.55
2414.00ft: MUD WEIGHT 9.15
2414.00ft: MUD PH 9.00

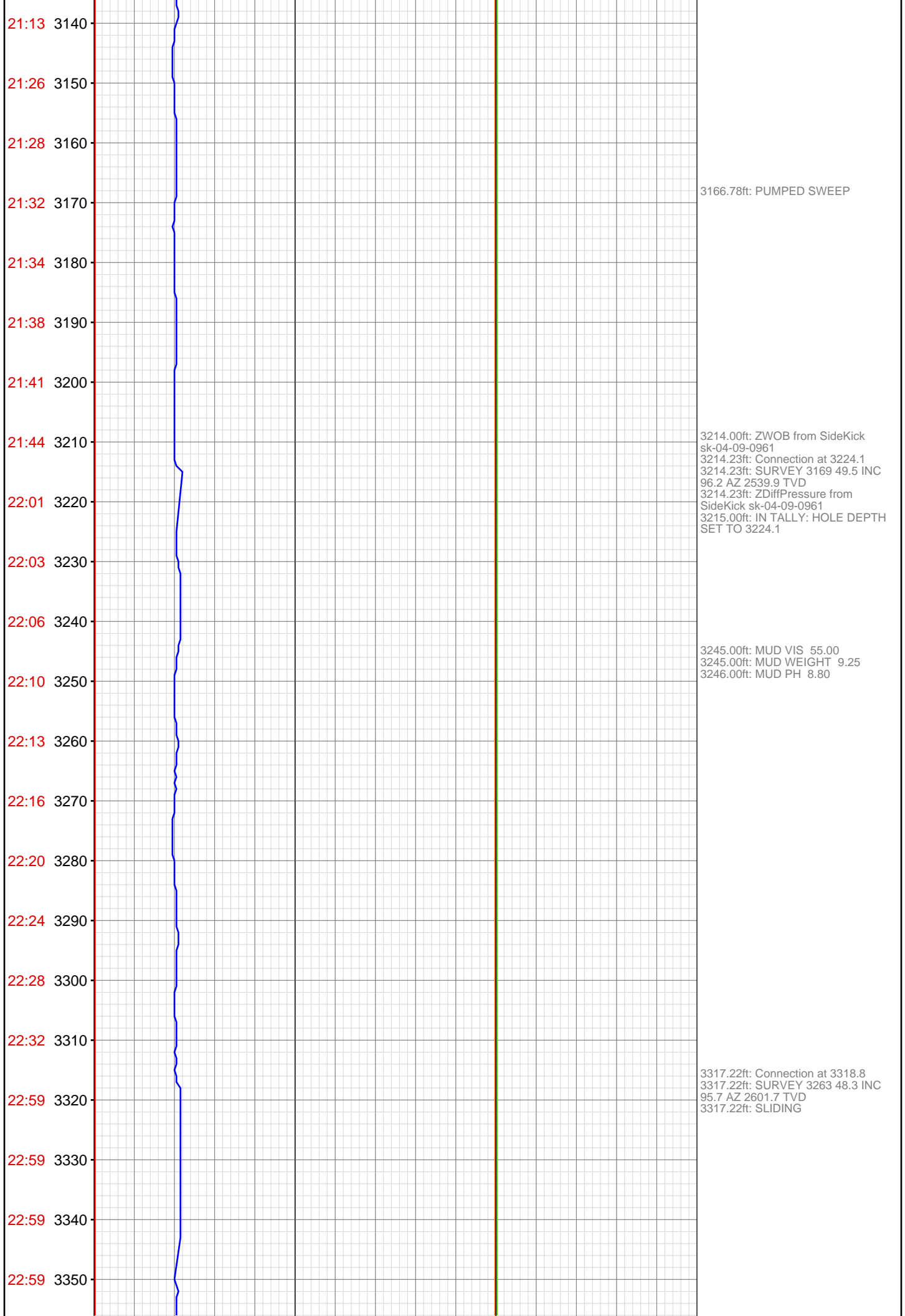
2450.00ft: BIT DEPTH CHANGED TO 2466.0 FEET
2450.21ft: Connection at 2466.9
SLIDING
2450.21ft: SURVEY @ 2411 inc 49.7
az 98.5 tvd 2049

2466.62ft: ROTATING









23:06 3360

23:09 3370

23:13 3380

23:16 3390

23:19 3400

23:22 3410

23:39 3420

23:45 3430

23:52 3440

23:55 3450

23:58 3460

Dec 08, 2010

00:02 3470

00:05 3480

00:09 3490

00:14 3500

00:28 3510

00:34 3520

00:40 3530

00:44 3540

00:47 3550

00:50 3560

00:55 3570

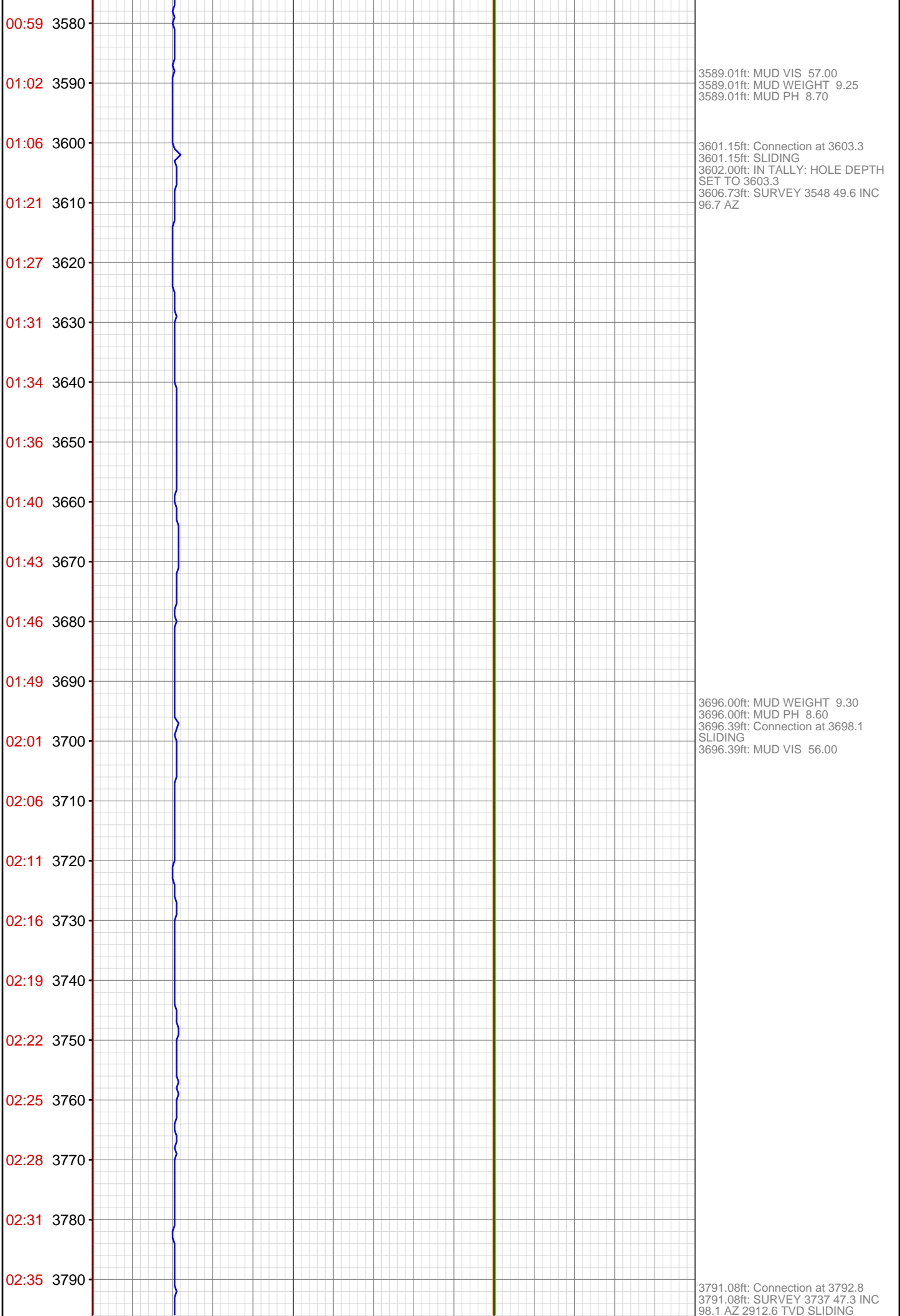
3366.99ft: MUD VIS 57.00
3366.99ft: MUD WEIGHT 9.25
3368.01ft: MUD PH 8.60

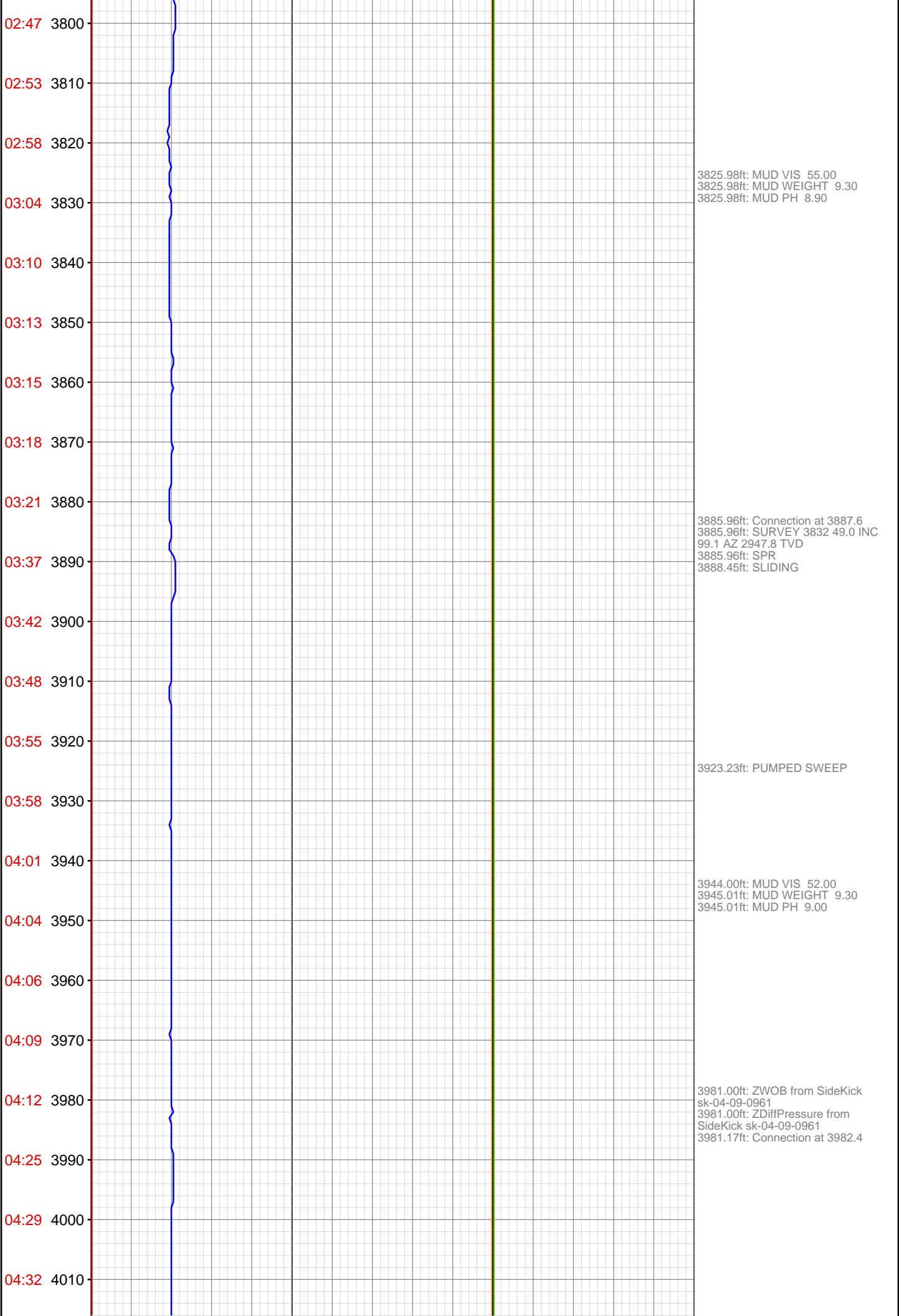
3412.99ft: HOOKLOAD WAS RECALIBRATED
3412.99ft: HOOK LOAD THRESHOLD RECALIBRATED TO 49
3412.99ft: ZWOB from SideKick sk-04-09-0961
3414.01ft: Connection at 3413.6
3414.01ft: ZWOB from SideKick sk-04-09-0961
3414.73ft: IN TALLY: HOLE DEPTH SET TO 3413.6
3423.00ft: ZWOB from SideKick sk-04-09-0961

3435.01ft: ZWOB from SideKick sk-04-09-0961
3435.01ft: ZWOB from SideKick sk-04-09-0961

3506.76ft: SURVEY 3453 50.2 INC 95.3 AZ 2725.5 TVD Connection at 3508.4
3506.76ft: SLIDING

3562.99ft: PUMPED SWEEP





04:36 4020
04:40 4030
04:44 4040
04:47 4050
04:51 4060
04:54 4070
05:09 4080
05:15 4090
05:19 4100
05:25 4110
05:28 4120
05:32 4130
05:35 4140
05:38 4150
05:41 4160
05:44 4170
05:57 4180
06:04 4190
06:09 4200
06:14 4210
06:20 4220
06:23 4230



4074.93ft: Connection at 4077.1
4074.93ft: SURVEY 4022 47.7 INC
98.4 AZ 3100.8 TVD
4074.93ft: SLIDING
4075.98ft: IN TALLY: HOLE DEPTH
SET TO 4077.1
4077.00ft: MUD VIS 50.00
4077.00ft: MUD WEIGHT 9.25
4077.00ft: MUD PH 8.70

4170.01ft: IN TALLY: HOLE DEPTH
SET TO 4171.9
4171.00ft: ZDiffPressure from
SideKick sk-04-09-0961
4171.88ft: Connection at 4171.9

4183.99ft: 021TGAS 04100428
SW0.30 HW30.00 - 42 days on
4189.99ft: MUD VIS 50.00
4189.99ft: MUD WEIGHT 9.25
4189.99ft: MUD PH 8.60

06:25 4240
06:28 4250
06:31 4260
06:41 4270
06:47 4280
06:52 4290
06:57 4300
07:02 4310
07:05 4320
07:08 4330
07:10 4340
07:13 4350
07:16 4360
07:27 4370
07:33 4380
07:36 4390
07:39 4400
07:42 4410
07:45 4420
07:48 4430
07:51 4440
07:55 4450



4266.54ft: SURVEY @ 4211 INC 48.2
AZ 97.4
4266.54ft: Connection at 4266.8
4267.82ft: tvd 3228

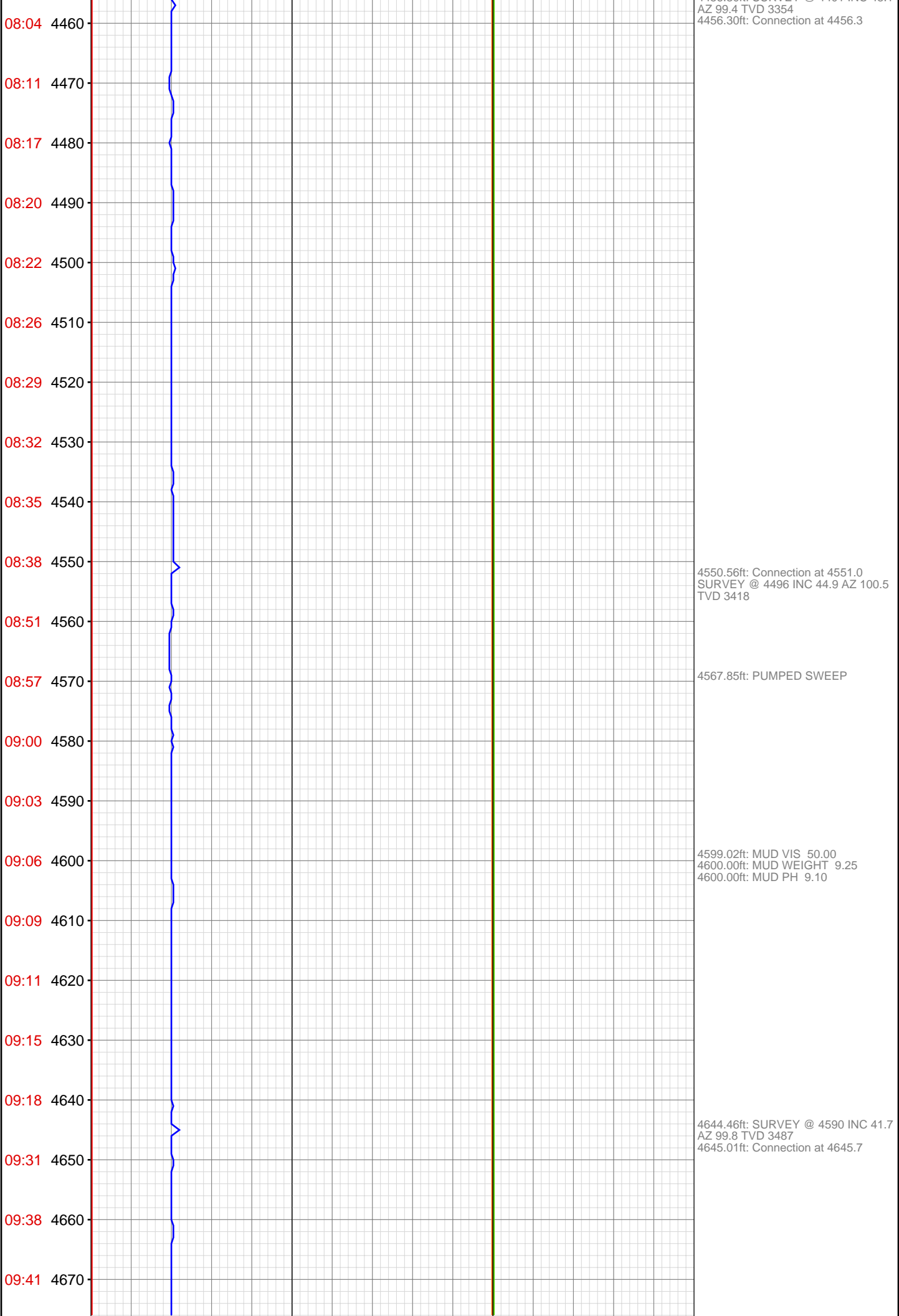
4309.02ft: PUMPED SWEEP

4354.99ft: MUD VIS 51.00
4356.00ft: MUD WEIGHT 9.25
4356.00ft: MUD PH 8.90
4361.52ft: SURVEY @ 4306 INC 49.7
AZ 98.1 TVD 3291
4362.27ft: Connection at 4361.5

4373.00ft: ZDiffPressure from
SideKick sk-04-09-0961

4381.56ft: PUMPED SWEEP

4450.00ft: MUD VIS 50.00
4450.98ft: MUD WEIGHT 9.25
4450.98ft: MUD PH 8.90
4456.30ft: SURVEY @ 4401 INC 48.1



09:44 4680
09:47 4690
09:50 4700
09:53 4710
09:56 4720
10:00 4730
10:10 4740
10:17 4750
10:22 4760
10:25 4770
10:29 4780
10:32 4790
10:35 4800
10:38 4810
10:41 4820
10:45 4830
11:01 4840
11:08 4850
11:11 4860
11:13 4870
11:17 4880
11:20 4890



4710.99ft: PUMPING CELLARS

4723.00ft: MUD VIS 51.00
4724.02ft: MUD WEIGHT 9.25
4724.02ft: MUD PH 8.80

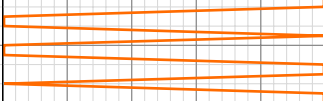
4737.99ft: IN TALLY: HOLE DEPTH
SET TO 4740.6
4740.55ft: SURVEY @ 4685 INC 38.9
AZ 100.0 TVD 3560
4740.88ft: Connection at 4740.6

4750.98ft: ZDiffPressure from
SideKick sk-04-09-0961

4823.66ft: MUD VIS 49.00
4824.02ft: MUD WEIGHT 9.25
4824.02ft: MUD PH 8.80

4835.01ft: SURVEY @ 4780 INC 36.6
AZ 99.2 TVD 3634
4835.01ft: ZDiffPressure from
SideKick sk-04-09-0961
4835.14ft: Connection at 4835.4

4846.33ft: PUMPED SWEEP

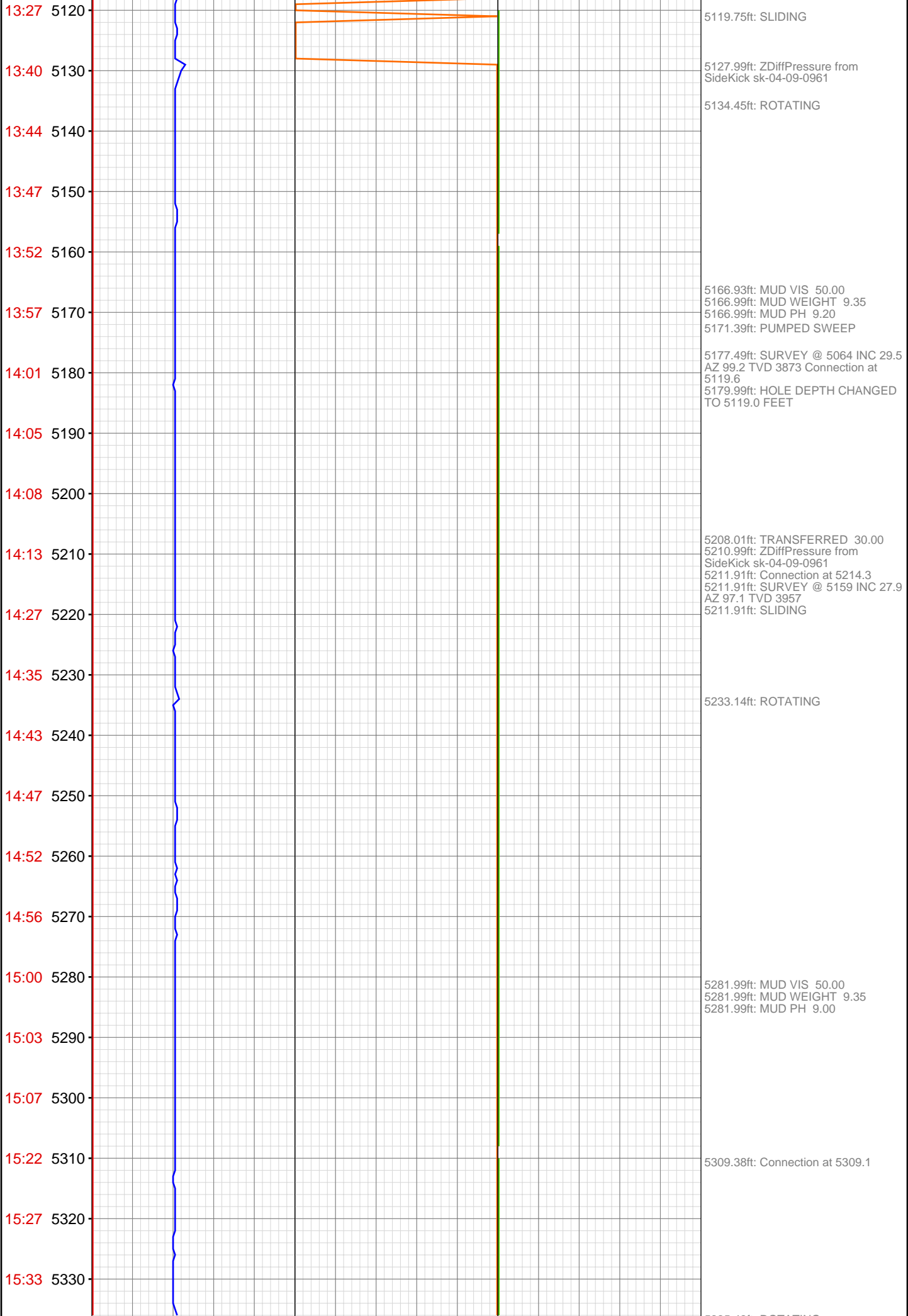


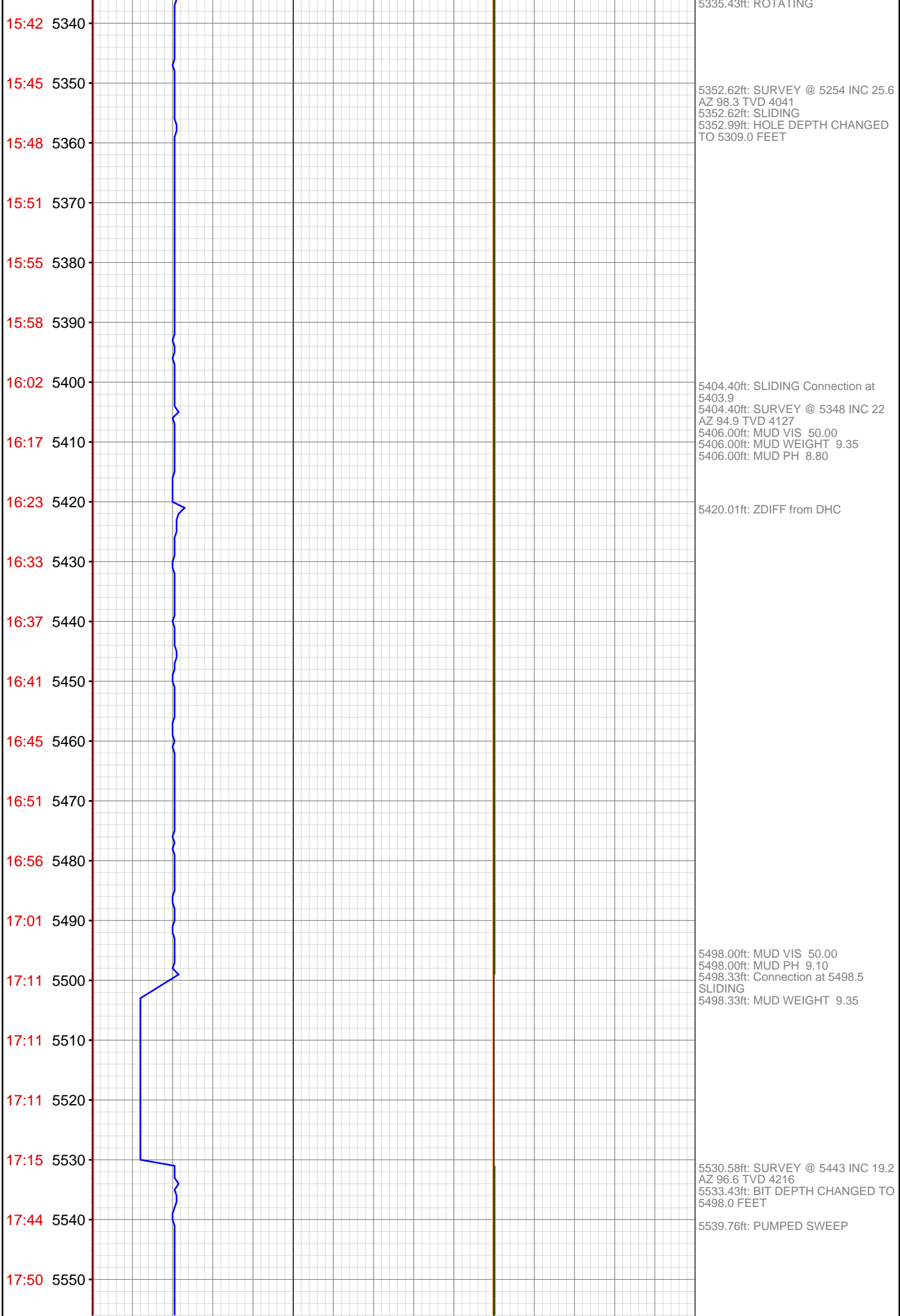
11:23 4900
11:26 4910
11:29 4920
11:41 4930
11:52 4940
11:55 4950
11:58 4960
12:01 4970
12:04 4980
12:07 4990
12:10 5000
12:14 5010
12:17 5020
12:35 5030
12:43 5040
12:47 5050
12:51 5060
12:55 5070
12:59 5080
13:03 5090
13:06 5100
13:09 5110

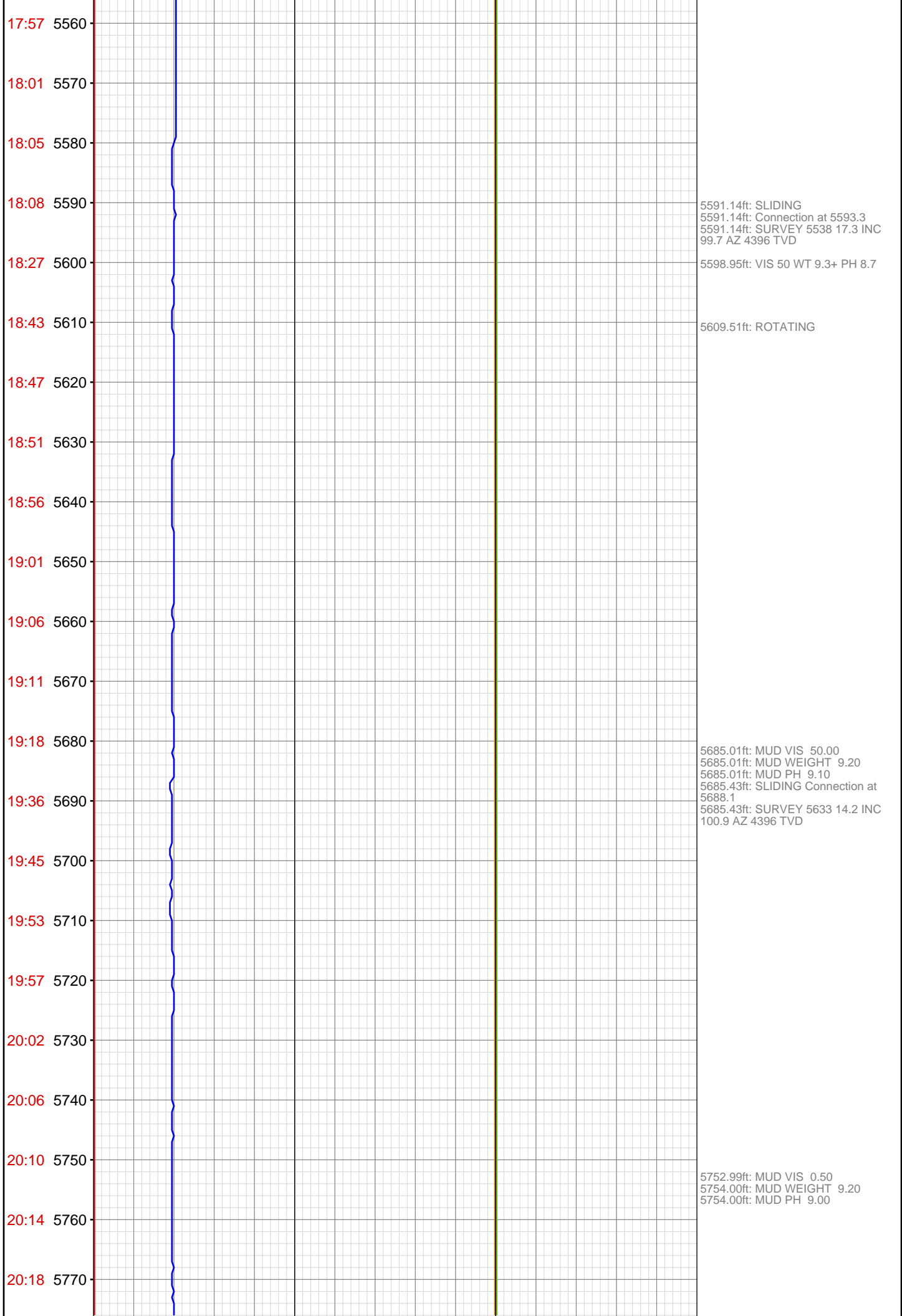
4929.00ft: IN TALLY: HOLE DEPTH
SET TO 4930.1
4929.99ft: ZDiffPressure from
SideKick sk-04-09-0961
4930.09ft: tvd 3712
4930.41ft: SURVEY @ 4875 INC 34.1
AZ 98.4
4931.00ft: Connection at 4930.1
4937.99ft: ZDiffPressure from
SideKick sk-04-09-0961
4939.99ft: MUD VIS 50.00
4940.03ft: PUMPED SWEEP
4941.01ft: MUD PH 9.20
4941.27ft: MUD WEIGHT 9.35

5024.02ft: ZDiffPressure from
SideKick sk-04-09-0961
5024.80ft: Connection at 5024.8
5024.80ft: SLIDING
5024.80ft: SURVEY @ 4969 INC 31.5
AZ 99.0 TVD 3791

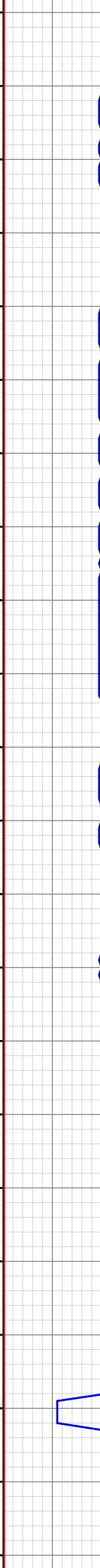
5064.01ft: MUD VIS 50.00
5064.99ft: MUD WEIGHT 9.35
5064.99ft: MUD PH 9.00







20:33 5780
20:42 5790
20:53 5800
21:00 5810
21:05 5820
21:09 5830
21:13 5840
21:16 5850
21:21 5860
21:26 5870
21:56 5880
22:06 5890
22:21 5900
22:26 5910
22:31 5920
22:38 5930
22:44 5940
22:48 5950
22:53 5960
23:04 5970
23:21 5980
23:34 5990



5779.82ft: SURVEY 5727 11.9 INC
99.1 AZ 4489 TVD
5779.82ft: Connection at 5782.7

5837.01ft: MUD VIS 0.49
5837.99ft: MUD WEIGHT 9.25
5837.99ft: MUD PH 8.90

5873.92ft: SURVEY 5822 9.9 INC
95.8 AZ 4582 TVD
5873.92ft: Connection at 5877.4

5894.00ft: MUD VIS 0.48
5894.00ft: MUD WEIGHT 9.25
5894.00ft: MUD PH 8.90
5894.85ft: PUMPED SWEEP

5903.02ft: BUILD 75 BBL MUD

23:38 6000
23:42 6010
23:47 6020
23:53 6030
23:58 6040
Dec 09, 2010
00:02 6050
00:08 6060
00:25 6070
00:30 6080
00:35 6090
00:38 6100
00:42 6110
00:46 6120
00:53 6130
00:58 6140
01:02 6150
01:06 6160
01:29 6170
01:48 6180
02:02 6190
02:07 6200
02:13 6210



6016.99ft: SURVEY 5917 6.9 INC
101.4 AZ 4676.6 TVD
6017.22ft: Connection at 5972.2
6018.01ft: IN TALLY: HOLE DEPTH
SET TO 5972.2

6066.01ft: MUD VIS 0.48
6066.01ft: MUD WEIGHT 9.20
6066.99ft: MUD PH 9.00
6067.36ft: SURVEY 6012 4.9 INC
102.4 AZ 4771.1 TVD Connection at
6067.0

6190.72ft: SURVEY 6106 4.9 INC
102.8 AZ 4864.8 TVD
6190.72ft: Connection at 6161.8
6191.99ft: IN TALLY: HOLE DEPTH
SET TO 6161.8

02:19 6220
02:24 6230
02:29 6240
02:34 6250
03:06 6260
03:10 6270
03:16 6280
03:21 6290
03:25 6300
03:31 6310
03:38 6320
03:48 6330
03:57 6340
04:04 6350
04:20 6360
04:26 6370
04:32 6380
04:41 6390
04:53 6400
05:03 6410
05:09 6420
05:20 6430



6243.01ft: MUD VIS 0.49
6244.00ft: MUD WEIGHT 9.10
6244.78ft: MUD PH 8.50

6256.89ft: SURVEY 6201 3.7 INC
96.6 AZ 4959.5 TVD
6256.89ft: Connection at 6256.6

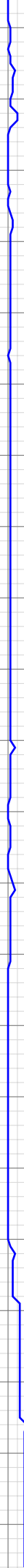
6350.79ft: SURVEY 6296 3.0 INC
96.8 AZ 5054.3 TVD
6350.79ft: Connection at 6351.4

6379.00ft: MUD VIS 0.49
6379.00ft: MUD WEIGHT 9.15
6379.99ft: MUD PH 8.80

6391.08ft: SPR's

6424.54ft: PUMPED SWEEP

05:27 6440
05:50 6450
06:04 6460
06:15 6470
06:22 6480
06:29 6490
06:34 6500
06:41 6510
06:49 6520
06:55 6530
07:11 6540
07:26 6550
07:43 6560
07:49 6570
07:58 6580
08:03 6590
08:06 6600
08:10 6610
08:17 6620
08:25 6630
08:53 6640
09:08 6650



6445.31ft: Connection at 6446.0
6445.31ft: SURVEY 6391 2.7 INC
99.8 AZ 5149 TVD
6452.99ft: MUD VIS 48.00
6452.99ft: MUD WEIGHT 9.20
6454.00ft: MUD PH 8.80
6454.00ft: 021TGAS 04100428
SW0.30 HW30.00 - 43 days on
6458.01ft: 038TGAS-Check trap cable
(temp)
6458.01ft: 043TGAS-Check trap cable
(unplugged?)
6458.01ft: 022TGAS-Trap needs
service

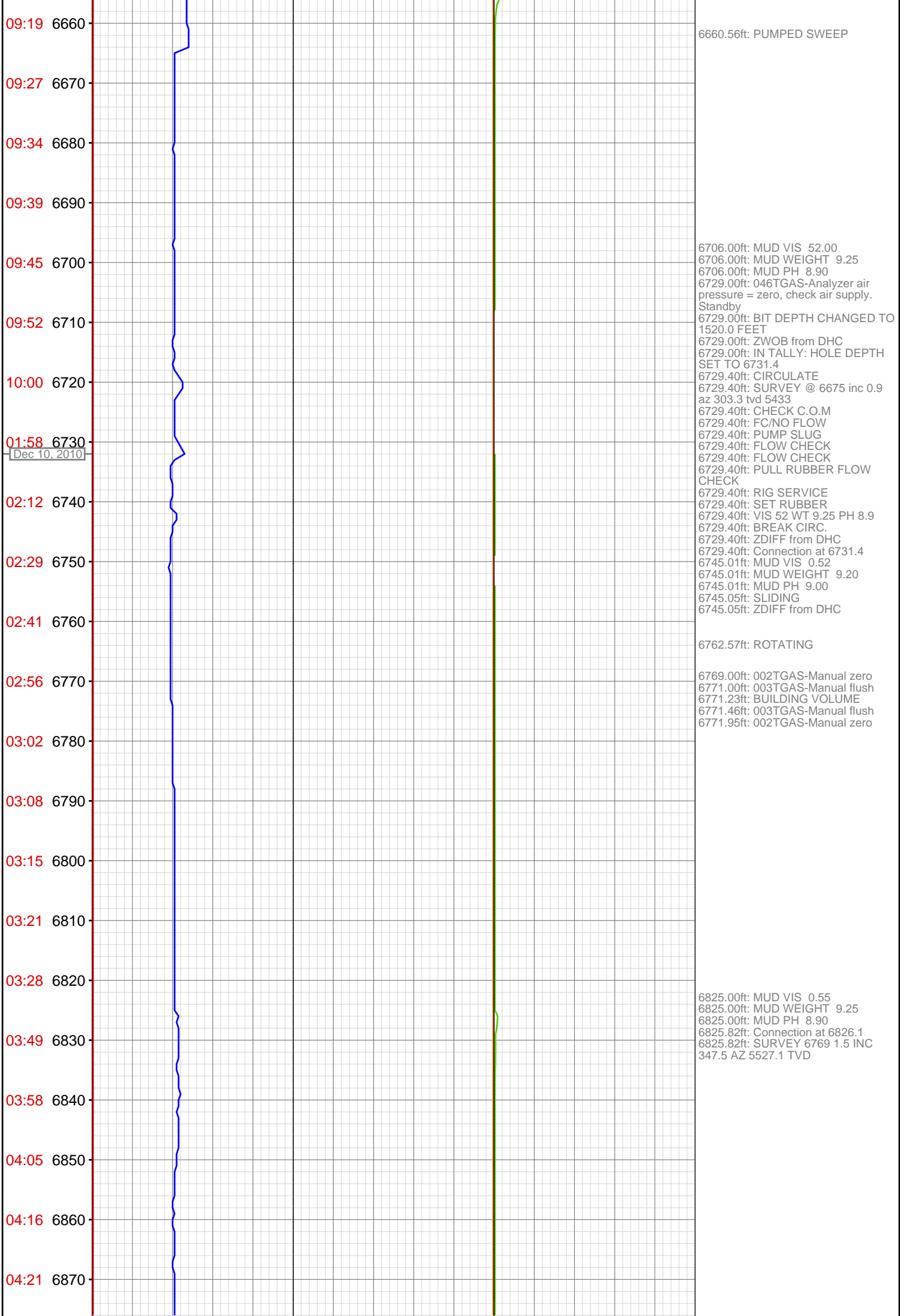
6539.01ft: IN TALLY: HOLE DEPTH
SET TO 6540.8
6540.78ft: SURVEY @ 6485 INC 1.3
AZ 76.3 TVD 5243
6540.78ft: Connection at 6540.8
6543.01ft: MUD VIS 48.00
6543.01ft: MUD WEIGHT 9.20
6543.01ft: MUD PH 9.30

6554.00ft: ZDiffPressure from
SideKick sk-04-09-0961

6606.00ft: MUD VIS 55.00
6606.00ft: MUD WEIGHT 9.20
6606.00ft: MUD PH 9.10
6611.38ft: PUMPED SWEEP

6635.11ft: SURVEY @ 6580 INC 0.5
AZ 291.8 TVD 5338 Connection at
6635.6

6644.00ft: ZDiffPressure from
SideKick sk-04-09-0961



04:28 6880

04:33 6890

04:37 6900

04:42 6910

04:47 6920

05:06 6930

05:16 6940

05:21 6950

05:26 6960

05:35 6970

05:41 6980

05:46 6990

05:51 7000

05:58 7010

06:26 7020

06:39 7030

07:04 7040

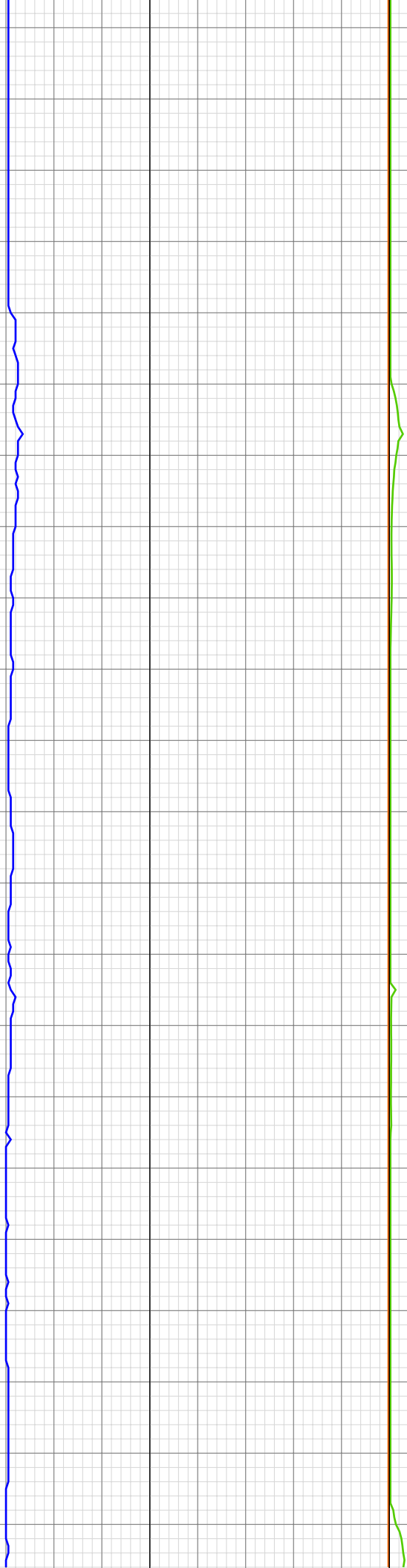
07:12 7050

07:23 7060

07:30 7070

07:41 7080

07:53 7090



6920.18ft: Connection at 6920.8
SLIDING

6935.99ft: MUD VIS 9.25
6935.99ft: MUD VIS 0.55
6935.99ft: MUD WEIGHT 9.25
6935.99ft: MUD PH 8.90

7010.99ft: 021TGAS 04100428
SW0.30 HW30.00 - 44 days on
7014.73ft: IN TALLY: HOLE DEPTH
SET TO 7015.7
7014.99ft: MUD VIS 57.00
7014.99ft: MUD WEIGHT 9.30
7015.72ft: CHECK C.O.M
7015.72ft: Connection at 7015.7
7015.72ft: MUD PH 8.50
7015.72ft: SURVEY @ 6959 INC 3.0
AZ 355.6 TVD 5716
7016.01ft: TRANSFERRED 25.00
7019.78ft: PUMP SUMP HOLES

7050.00ft: MUD VIS 53.00
7050.00ft: MUD WEIGHT 9.30
7050.00ft: MUD PH 8.70

7058.60ft: ROTATING

7079.00ft: ZDiffPressure from
SideKick sk-04-09-0961
7079.46ft: CHECK SHOT

08:02 7100
08:16 7110
08:20 7120
08:24 7130
08:28 7140
08:36 7150
08:40 7160
08:45 7170
08:51 7180
08:55 7190
09:00 7200
09:14 7210
09:18 7220
09:22 7230
09:25 7240
09:29 7250
09:33 7260
09:38 7270
09:42 7280
09:46 7290
10:01 7300
10:17 7310



7108.99ft: MUD VIS 52.00
7108.99ft: MUD WEIGHT 9.30
7108.99ft: MUD PH 9.00
7109.74ft: SURVEY @ 7054 inc 1.1
az 304.4 tvd 5811
7110.24ft: Connection at 7110.4

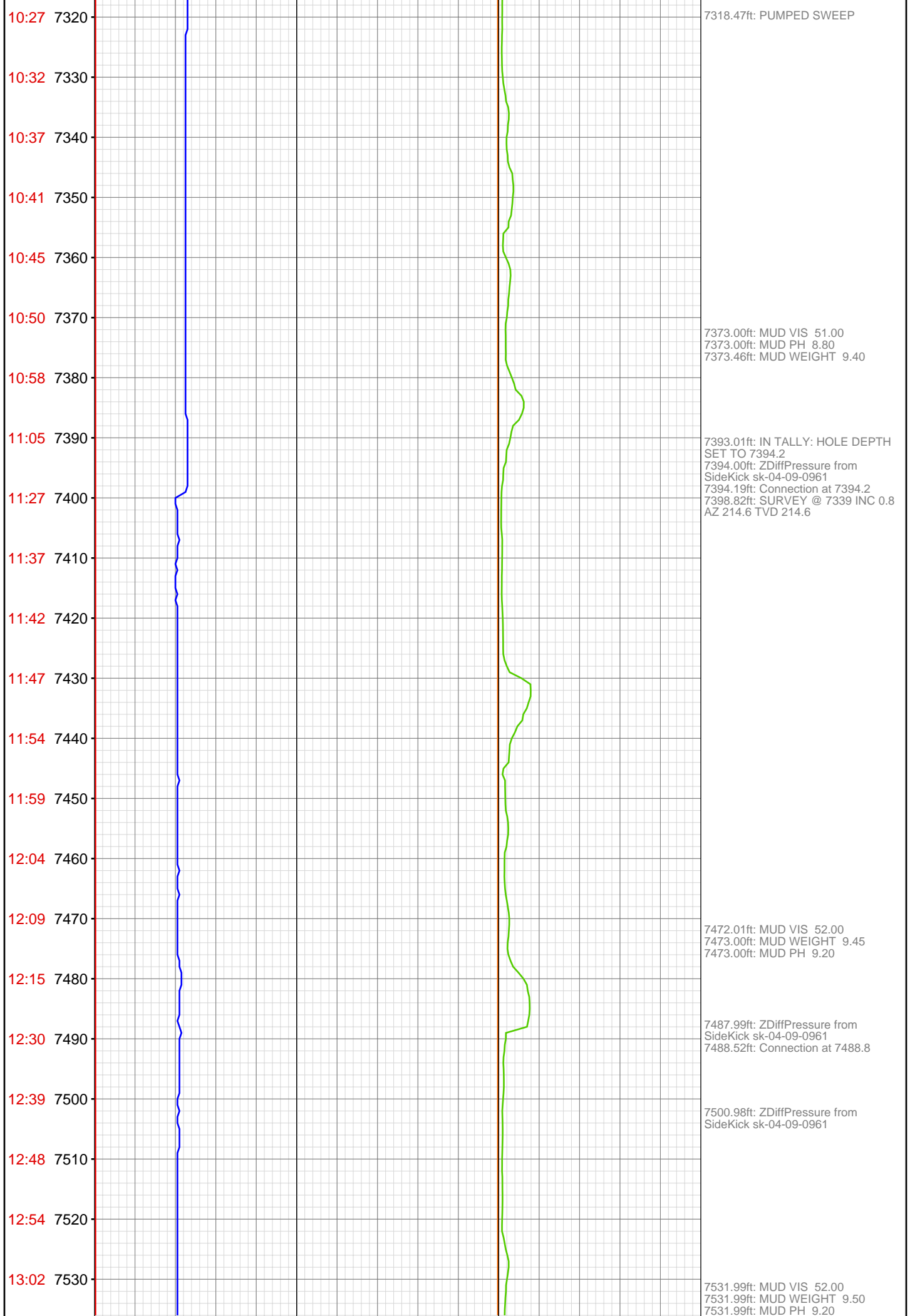
7142.09ft: ZDiffPressure from
SideKick sk-04-09-0961 CHECK
SHOT

7168.54ft: PUMPED SWEEP

7189.01ft: MUD VIS 52.00
7189.01ft: MUD WEIGHT 9.35
7189.99ft: MUD PH 9.10

7202.99ft: ZDiffPressure from
SideKick sk-04-09-0961
7203.87ft: Connection at 7204.9
7203.87ft: SURVEY @ 7148 inc 1.9
az 170.4 tvd 5906

7297.01ft: IN TALLY: HOLE DEPTH
SET TO 7299.6
7299.02ft: ZDiffPressure from
SideKick sk-04-09-0961
7299.02ft: MUD VIS 51.00
7299.02ft: MUD WEIGHT 9.35
7299.02ft: MUD PH 9.10
7299.61ft: Connection at 7299.6
7299.61ft: SURVEY @ 7244 INC 2.6
AZ 179.7 TVD 6002
7299.61ft: SLIDING



13:08 7540
13:11 7550
13:17 7560
13:23 7570
13:28 7580
13:51 7590
14:00 7600
14:04 7610
14:08 7620
14:13 7630
14:17 7640
14:22 7650
14:27 7660
14:32 7670
14:47 7680
14:55 7690
15:00 7700
15:06 7710
15:11 7720
15:17 7730
15:20 7740
15:25 7750

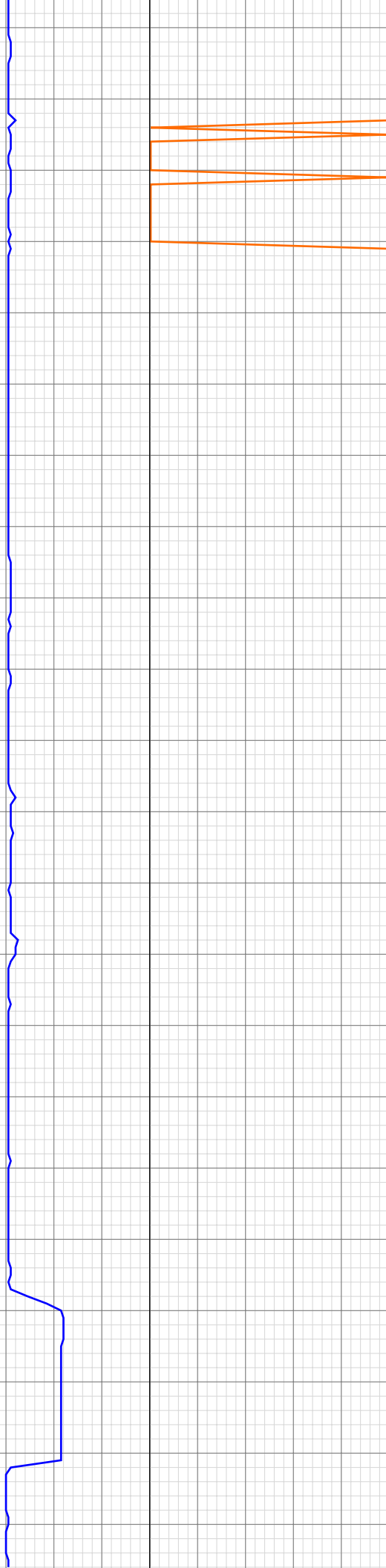
7581.99ft: IN TALLY: HOLE DEPTH
SET TO 7583.6
7583.01ft: ZDiffPressure from
SideKick sk-04-09-0961
7583.63ft: Connection at 7583.6

7597.01ft: MUD VIS 54.00
7597.01ft: MUD WEIGHT 9.50
7597.01ft: MUD PH 9.00
7600.43ft: PUMPED SWEEP

7675.98ft: IN TALLY: HOLE DEPTH
SET TO 7678.3
7675.98ft: ZDiffPressure from
SideKick sk-04-09-0961
7675.98ft: ZWOB from SideKick
sk-04-09-0961
7678.28ft: SURVEY @ 7263 INC 1.1
AZ 172.1 TVD 3187 Connection at
7678.3
7687.01ft: MUD VIS 54.00
7687.01ft: MUD WEIGHT 9.55
7687.37ft: MUD PH 9.00

7701.58ft: PUMPED SWEEP

15:29 7760
15:33 7770
16:13 7780
16:24 7790
16:28 7800
16:34 7810
16:38 7820
16:44 7830
16:50 7840
16:53 7850
16:58 7860
17:13 7870
17:24 7880
17:34 7890
17:38 7900
17:42 7910
17:46 7920
17:51 7930
17:55 7940
18:00 7950
18:04 7960
18:19 7970



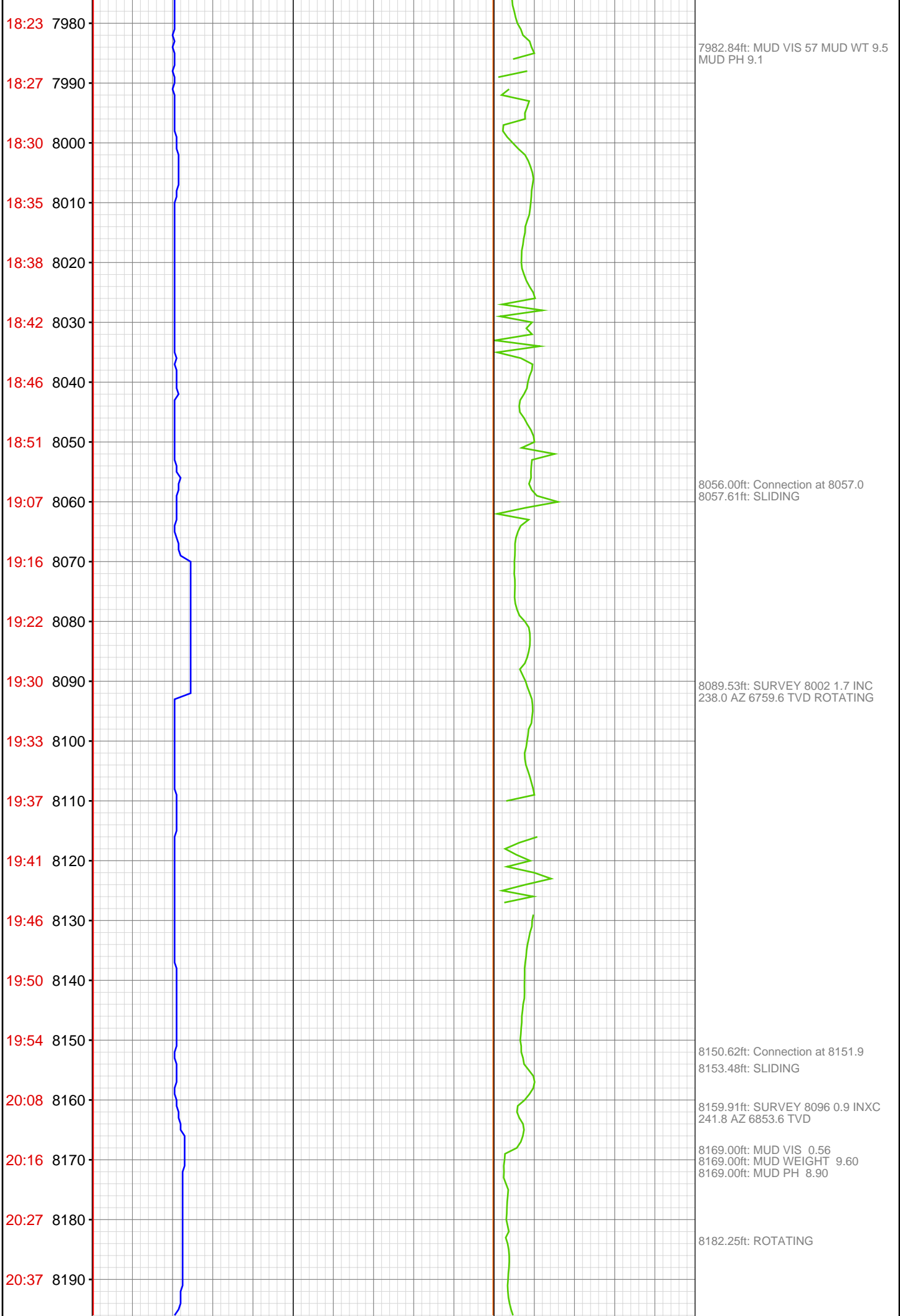
7772.01ft: ZDiffPressure from
SideKick sk-04-09-0961
7772.01ft: MUD WEIGHT 9.60
7772.01ft: MUD PH 8.90
7772.11ft: RIG SERVICE
7772.11ft: SPR'S
7772.11ft: SURVEY @ 7717 INC 1.3
AZ 195.2 TVD 6475
7772.11ft: MUD VIS 54.00
7772.11ft: Connection at 7772.9

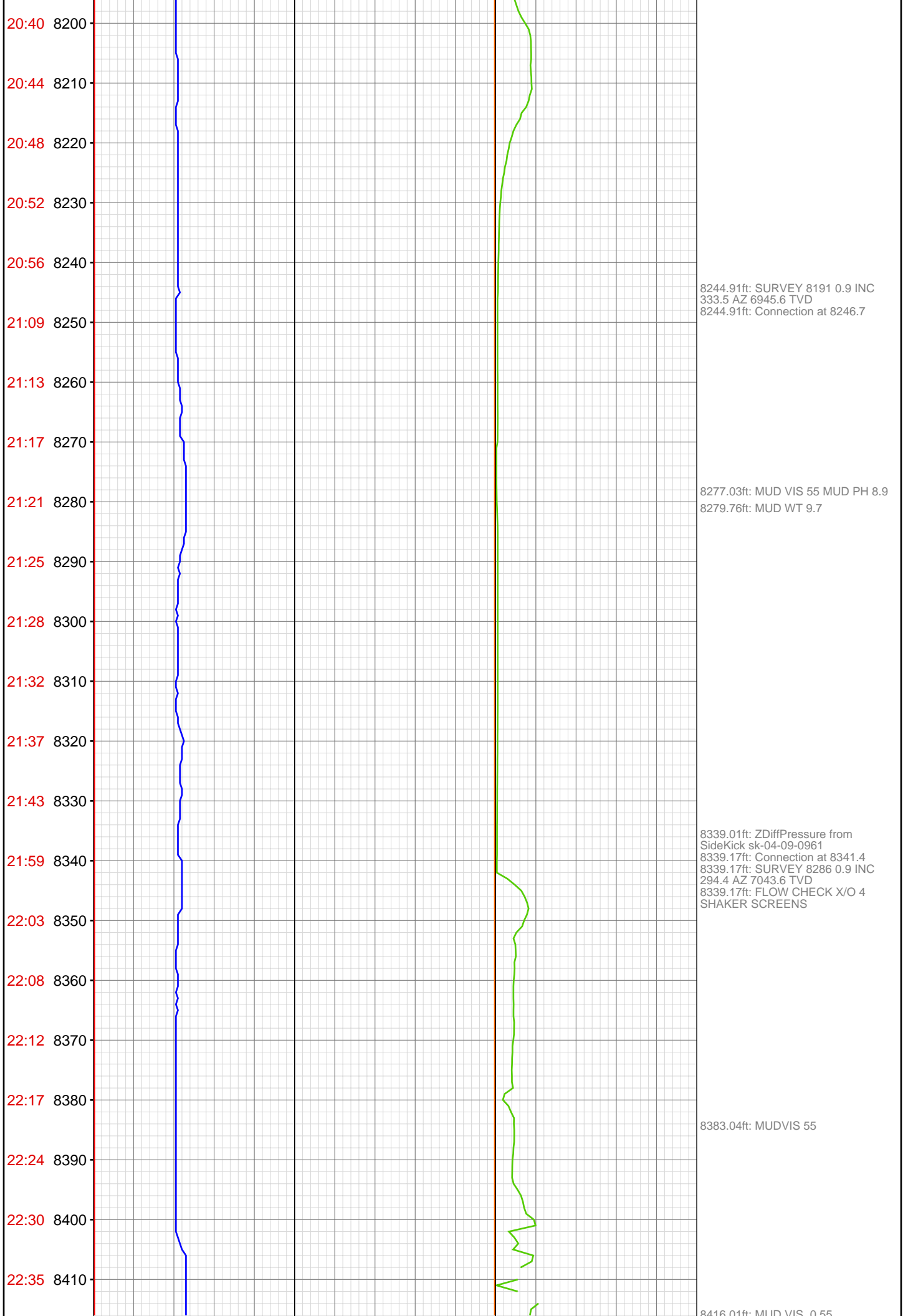
7789.99ft: ZDiffPressure from
SideKick sk-04-09-0961
7789.99ft: ZWOB from SideKick
sk-04-09-0961

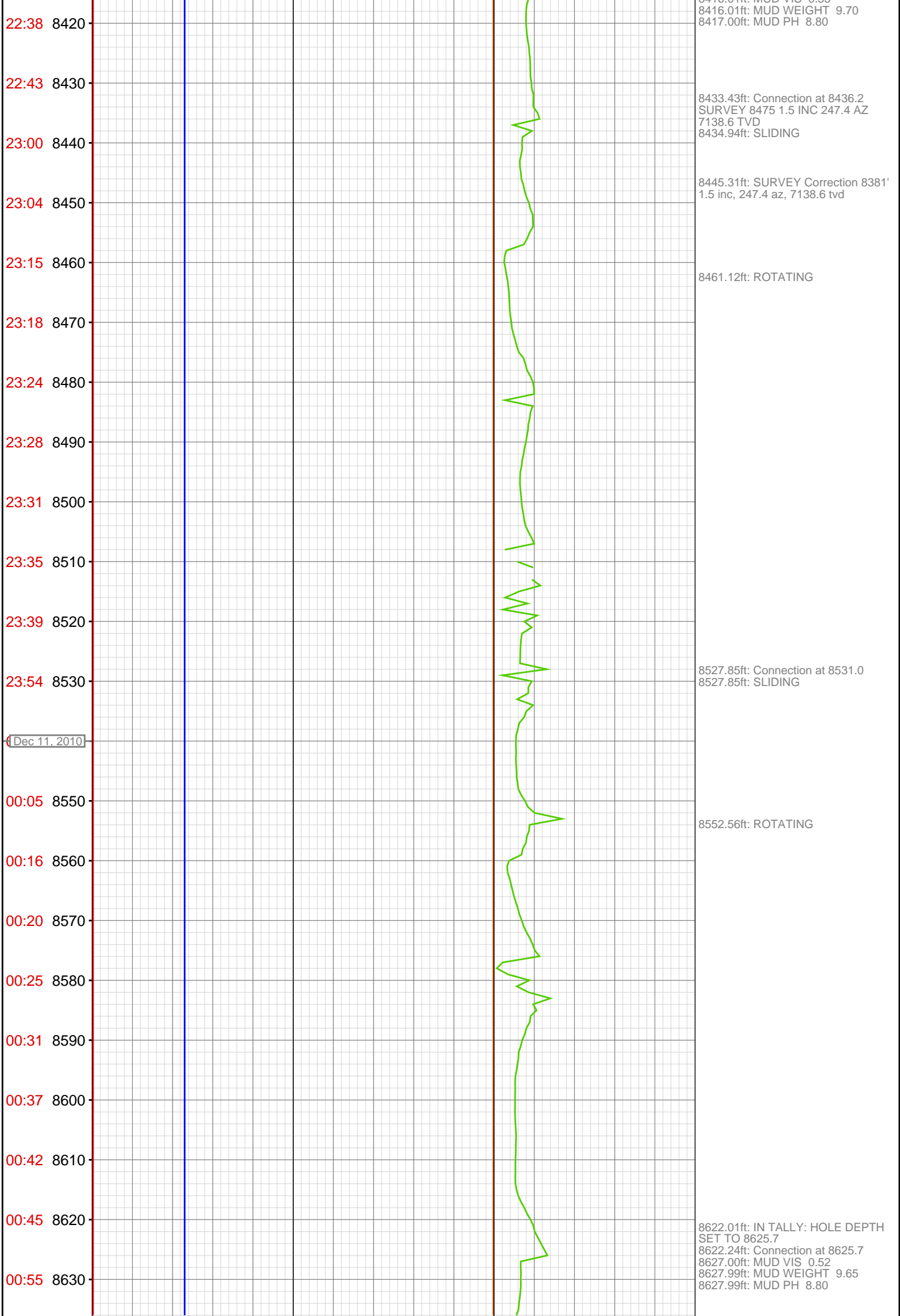
7839.01ft: MUD VIS 54.00
7839.01ft: MUD PH 9.10
7839.40ft: MUD WEIGHT 9.60

7866.01ft: IN TALLY: HOLE DEPTH
SET TO 7867.6
7867.00ft: ZDiffPressure from
SideKick sk-04-09-0961
7867.65ft: Connection at 7867.6
7867.65ft: ZDiffPressure from
SideKick sk-04-09-0961
7870.37ft: SURVEY 7812 0.8 INC
223.1 AZ 6569 TVD
7871.36ft: SURVEY @ 7812 INC 0.8
AZ 223.1 TVD 6570

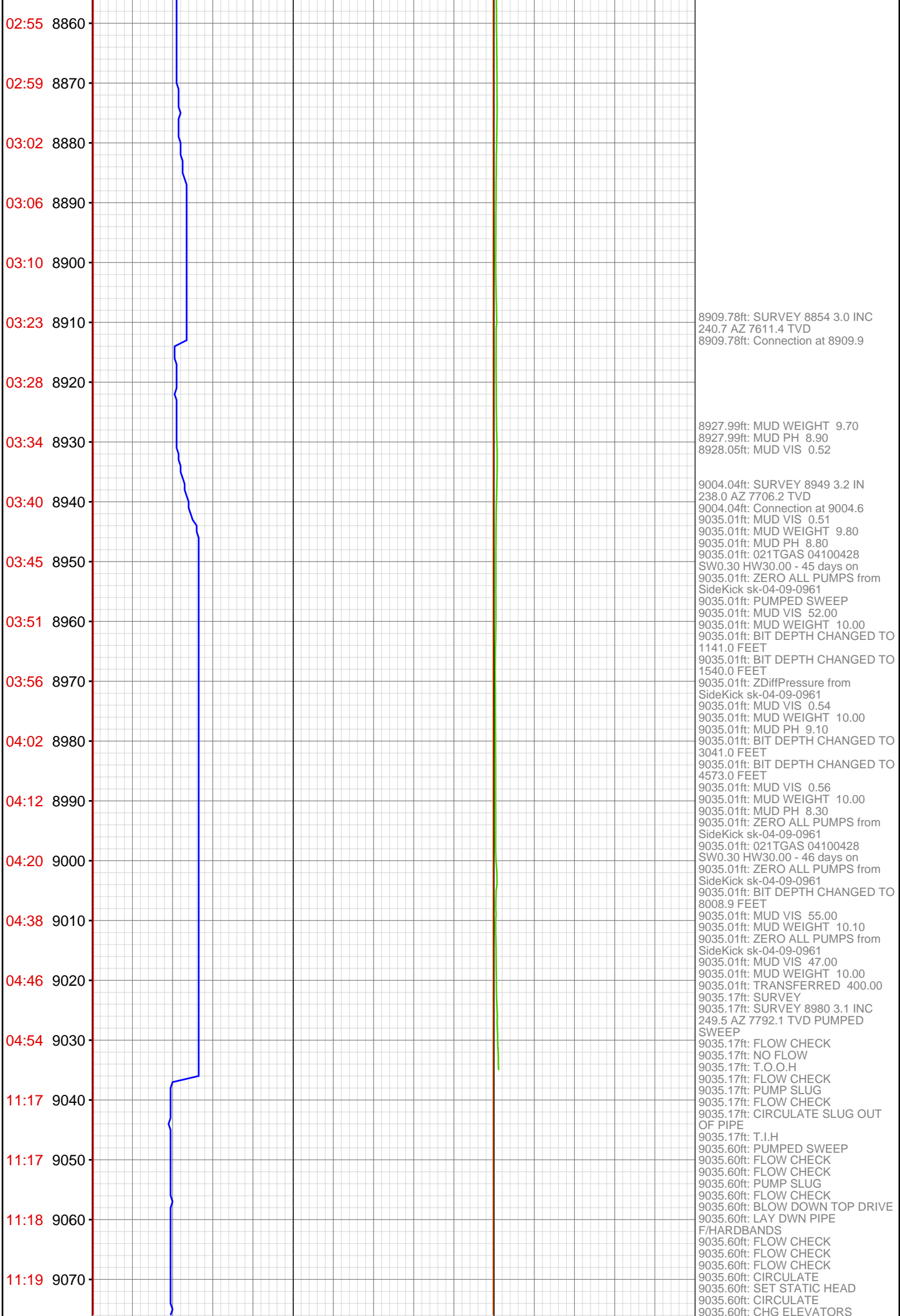
7961.55ft: SURVEY 7907 0.7 INC
285.8 AZ 6664.6 TVD
7961.55ft: Connection at 7962.3











9080

9035.60ft: CIRCULATE
9035.60ft: PUMPING CELLAR
9035.60ft: PUMPED PLUG
9077.00ft: HOLE DEPTH CHANGED
TO 9035.0 FEET
9077.99ft: BIT DEPTH CHANGED TO
9004.6 FEET