

SWEPI LP

CONSTRUCTION LAYOUT FOR

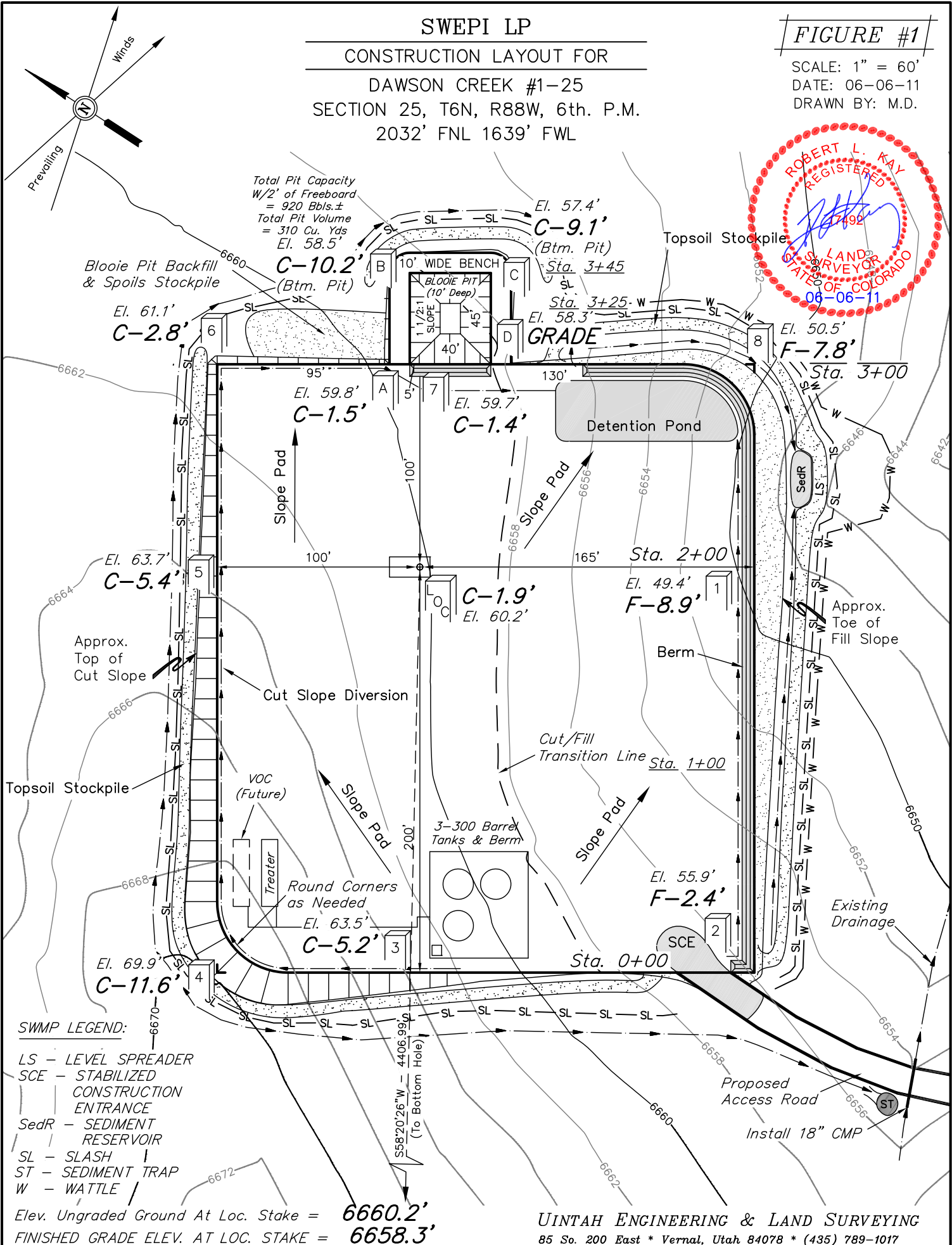
DAWSON CREEK #1-25
SECTION 25, T6N, R88W, 6th. P.M.
2032' FNL 1639' FWL

FIGURE #1

SCALE: 1" = 60'

DATE: 06-06-11

DRAWN BY: M.D.



UINTAH ENGINEERING & LAND SURVEYING

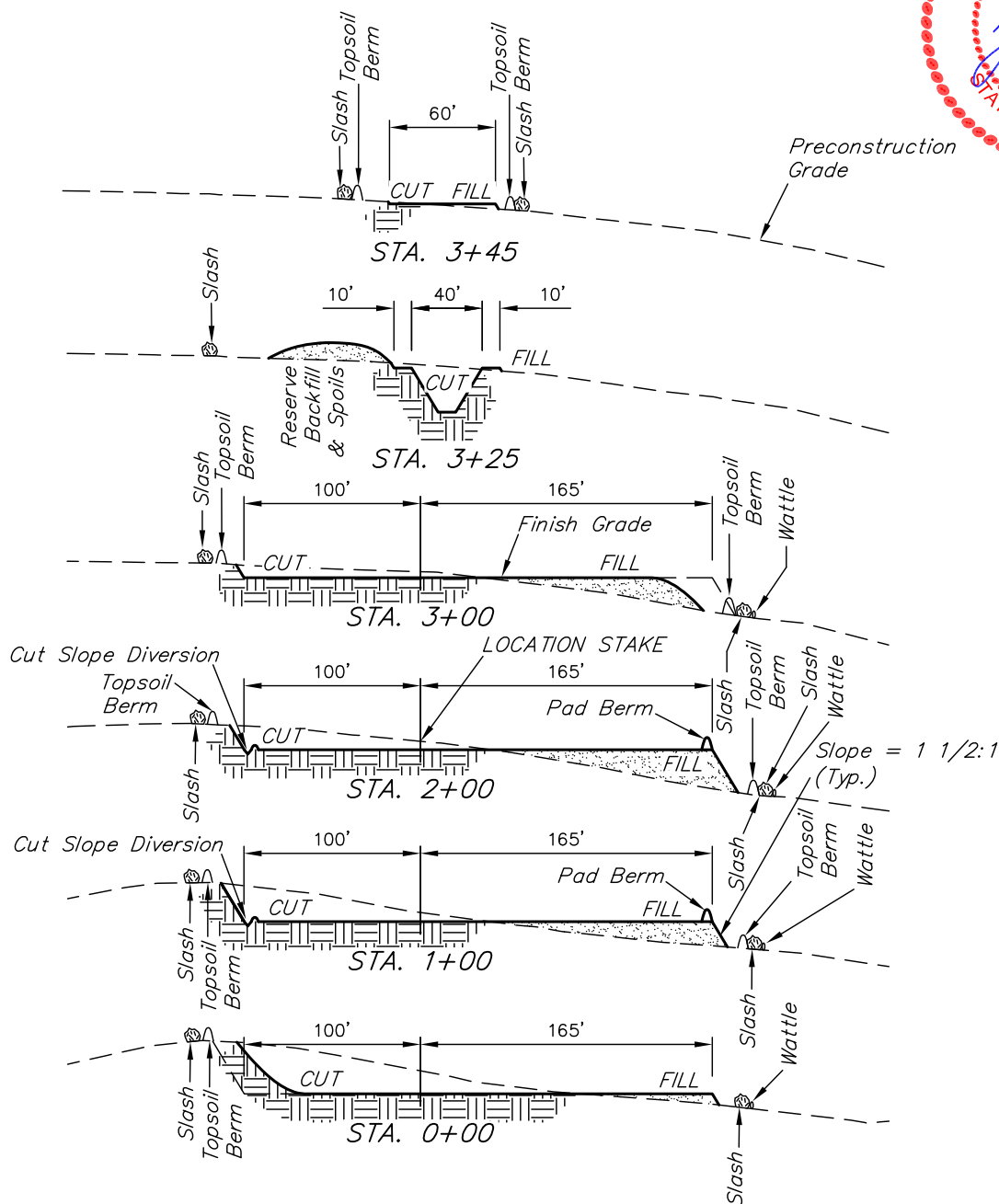
85 So. 200 East * Vernal, Utah 84078 * (435) 789-1017

1" = 40'
X-Section
Scale
1" = 100'

DATE: 06-06-11
DRAWN BY: M.D.

SWEPI LP
CONSTRUCTION LAYOUT CROSS SECTIONS FOR
DAWSON CREEK #1-25
SECTION 25, T6N, R88W, 6th. P.M.
2032' FNL 1639' FWL

FIGURE #2



APPROXIMATE ACREAGES
WELL SITE DISTURBANCE = ± 2.136 ACRES
ACCESS ROAD DISTURBANCE = ± 1.711 ACRES
TOTAL = ± 3.847 ACRES

* NOTE:
FILL QUANTITY INCLUDES
5% FOR COMPACTION

APPROXIMATE YARDAGES

(6") Topsoil Stripping = 1,730 Cu. Yds.
Remaining Location = 6,030 Cu. Yds.
TOTAL CUT = 7,760 CU.YDS.
FILL = 5,870 CU.YDS.

EXCESS MATERIAL = 1,890 Cu. Yds.
Topsoil & Pit Backfill = 1,890 Cu. Yds.
(1/2 Pit Vol.)
EXCESS UNBALANCE = 0 Cu. Yds.
(After Interim Rehabilitation)

UINTAH ENGINEERING & LAND SURVEYING
85 So. 200 East * Vernal, Utah 84078 * (435) 789-1017