

1918 Brass Cap,
0.5' Below Ground
Lat: 40.456119°
Long: 107.219325°

T6N, R88W, 6th. P.M.

SWEPI LP

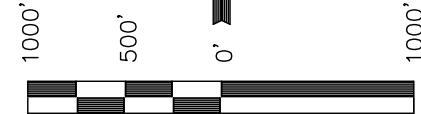
Well location, DAWSON CREEK #1-25 (SURFACE LOCATION), located as shown in the SE 1/4 NW 1/4 of Section 25, T6N, R88W, 6th. P.M., Routt County, Colorado.

BASIS OF ELEVATION

SPOT ELEVATION AT A ROAD INTERSECTION LOCATED IN THE SW 1/4 OF SECTION 20, T6N, R88W, 6th P.M., TAKEN FROM THE HAYDEN QUADRANGLE, COLORADO, 7.5 MINUTE SERIES (TOPOGRAPHICAL MAP) PUBLISHED BY THE UNITED STATES DEPARTMENT OF THE INTERIOR, GEOLOGICAL SURVEY. SAID ELEVATION IS MARKED AS BEING 6445 FEET.

BASIS OF BEARINGS

BASIS OF BEARINGS IS A G.P.S. OBSERVATION.



SCALE

CERTIFICATE

THIS IS TO CERTIFY THAT THE ABOVE PLAT WAS PREPARED FROM FIELD NOTES OF ACTUAL SURVEYS MADE BY ME OR UNDER MY SUPERVISION AND THAT THE SAME ARE TRUE AND CORRECT TO THE BEST OF MY KNOWLEDGE AND BELIEF.

REGISTERED LAND SURVEYOR
REGISTRATION NO. 17492
STATE OF COLORADO

06-06-11

REV.: 06-06-11 M.D.

UINTAH ENGINEERING & LAND SURVEYING
85 SOUTH 200 EAST - VERNAL, UTAH 84078
(435) 789-1017

SCALE 1" = 1000'	DATE SURVEYED: 05-10-11	DATE DRAWN: 05-26-11
PARTY B.H. N.F. M.D.	REFERENCES G.L.O. PLAT	
WEATHER COOL	FILE SWEPI LP	

S89°20'49"E - 2614.49' (Meas.) N89°25'W - 2613.93' (G.L.O.)

1999 Private Alum.
Cap, 0.3' Tall S/E/W
Fence Intersection,
RLS#18394
Lat: 40.456031°
Long: 107.209933°

2032'

1639'

DAWSON CREEK #1-25
Elev. Ungraded Ground = 6660'

25

NOTE:
THE PROPOSED BOTTOM HOLE FOR THIS WELL IS
LOCATED IN THE SW 1/4 SE 1/4 OF SECTION 26,
T6N, R88W, 6th P.M. AT A DISTANCE OF 971' FSL
2022' FEL. IT BEARS S58°20'26"W 4406.99' FROM
THE PROPOSED WELL HEAD.

NOTE:
SEE ADDENDUM TO LEGAL PLAT FOR
EXISTING IMPROVEMENTS WITHIN 400'
OF THE PROPOSED WELL DISTURBANCE.

1918 Brass Cap,
1.8' High,
Lat: 40.448681°
Long: 107.219233°

N00°35'36"W - 2711.04' (Meas.)
N03°14'59"E - 2655.30' (Meas.)

S89°55'58"W - 2646.58' (Meas.) N89°52'E - 2654.85' (G.L.O.)

1918 Brass Cap,
0.7' Tall at S/E/W
Fence Intersection
Lat: 40.441406°
Long: 107.219781°

1997 Private Alum.
Cap, 0.8' Tall E/W
Fence Corner,
RLS#12881
Lat: 40.441408°
Long: 107.210275°

R
88
W

R
87
W

PDOP = 2.9

LEGEND:

└─┘ = 90° SYMBOL

● = PROPOSED WELL HEAD.

▲ = SECTION CORNERS LOCATED.

NAD 83 (SURFACE LOCATION)
LATITUDE = 40°27'01.75" (40.450486)
LONGITUDE = 107°12'48.12" (107.213367)
NAD 27 (SURFACE LOCATION)
LATITUDE = 40°27'01.84" (40.450511)
LONGITUDE = 107°12'45.92" (107.212756)

T6N, R88W, 6th. P.M.

1918 Brass Cap,
0.5' Below Ground
Lat: 40.456119°
Long: 107.219325°

SWEPI LP

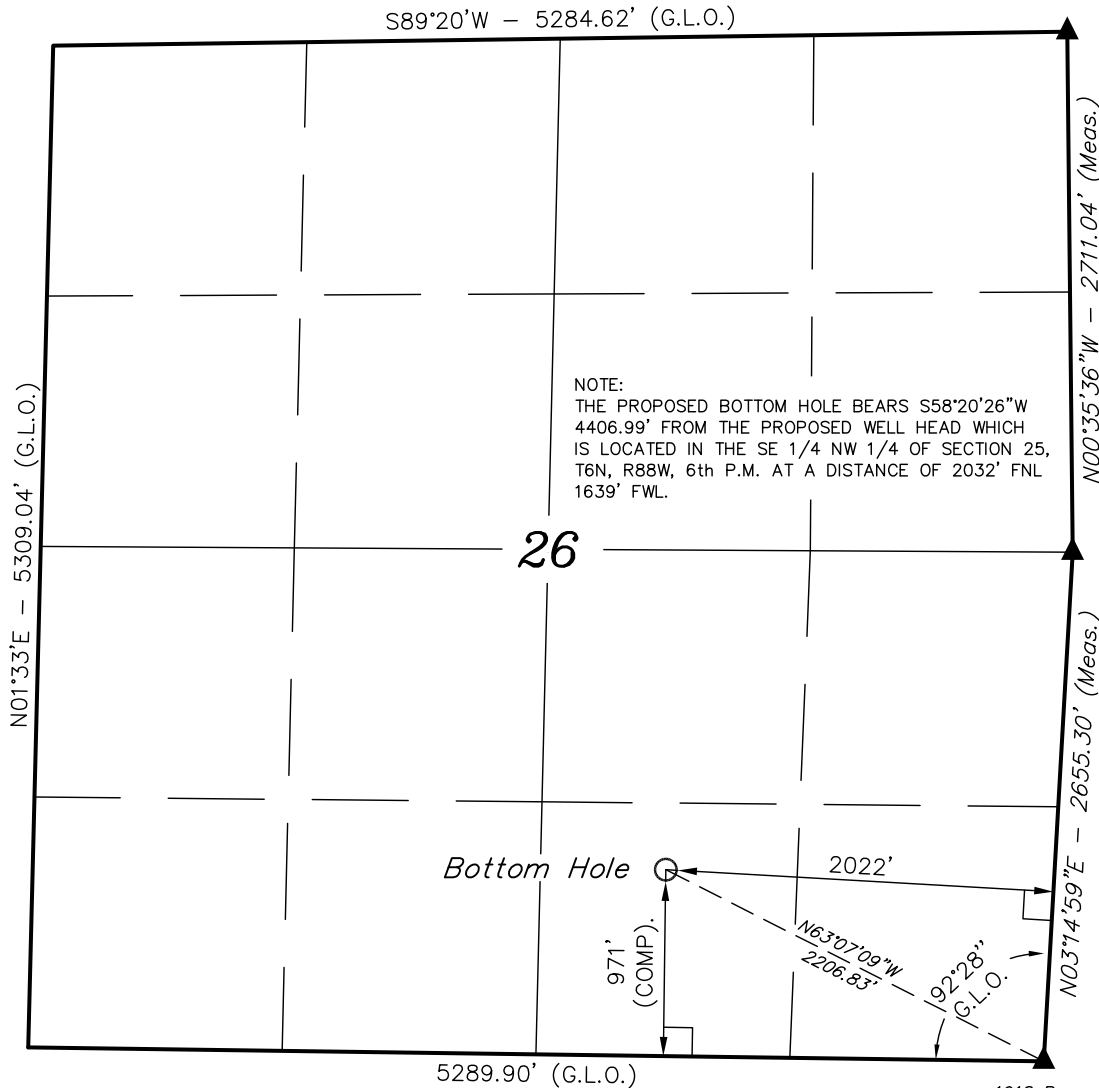
Well location, DAWSON CREEK #1-25 (TARGET BOTTOM HOLE), located as shown in the SW 1/4 SE 1/4 of Section 26, T6N, R88W, 6th. P.M., Routt County, Colorado.

BASIS OF ELEVATION

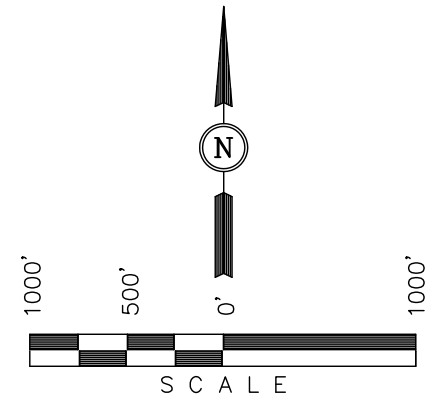
SPOT ELEVATION AT A ROAD INTERSECTION LOCATED IN THE SW 1/4 OF SECTION 20, T6N, R88W, 6th P.M., TAKEN FROM THE HAYDEN QUADRANGLE, COLORADO, 7.5 MINUTE SERIES (TOPOGRAPHICAL MAP) PUBLISHED BY THE UNITED STATES DEPARTMENT OF THE INTERIOR, GEOLOGICAL SURVEY. SAID ELEVATION IS MARKED AS BEING 6445 FEET.

BASIS OF BEARINGS

BASIS OF BEARINGS IS A G.P.S. OBSERVATION.



1918 Brass Cap,
1.8' High,
Lat: 40.448681°
Long: 107.219233°



CERTIFICATE

THIS IS TO CERTIFY THAT THE ABOVE PLAT WAS PREPARED FROM FIELD NOTES OF ACTUAL SURVEYS MADE BY ME OR UNDER MY SUPERVISION AND THAT THE SAME ARE TRUE AND CORRECT TO THE BEST OF MY KNOWLEDGE AND BELIEF.

REGISTERED LAND SURVEYOR
REGISTRATION NO. 17492
STATE OF COLORADO

06-06-11

REV.: 06-06-11 M.D.

UINTAH ENGINEERING & LAND SURVEYING
85 SOUTH 200 EAST - VERNAL, UTAH 84078
(435) 789-1017

SCALE 1" = 1000'	DATE SURVEYED: 05-10-11	DATE DRAWN: 05-26-11
PARTY B.H. N.F. M.D.	REFERENCES G.L.O. PLAT	
WEATHER COOL	FILE SWEPI LP	

LEGEND:

- └─ = 90° SYMBOL
● = PROPOSED WELL HEAD.
▲ = SECTION CORNERS LOCATED.

NAD 83 (TARGET BOTTOM HOLE)
LATITUDE = 40°26'38.93" (40.444147)
LONGITUDE = 107°13'36.65" (107.226847)
NAD 27 (TARGET BOTTOM HOLE)
LATITUDE = 40°26'39.02" (40.444172)
LONGITUDE = 107°13'34.44" (107.226233)

SWEPI LP

ADDENDUM TO LEGAL PLAT FOR

DAWSON CREEK #1-25
SECTION 25, T6N, R88W, 6th. P.M.
2032' FNL 1639' FWL

SCALE: 1" = 200'
DATE: 06-06-11
DRAWN BY: M.D.

