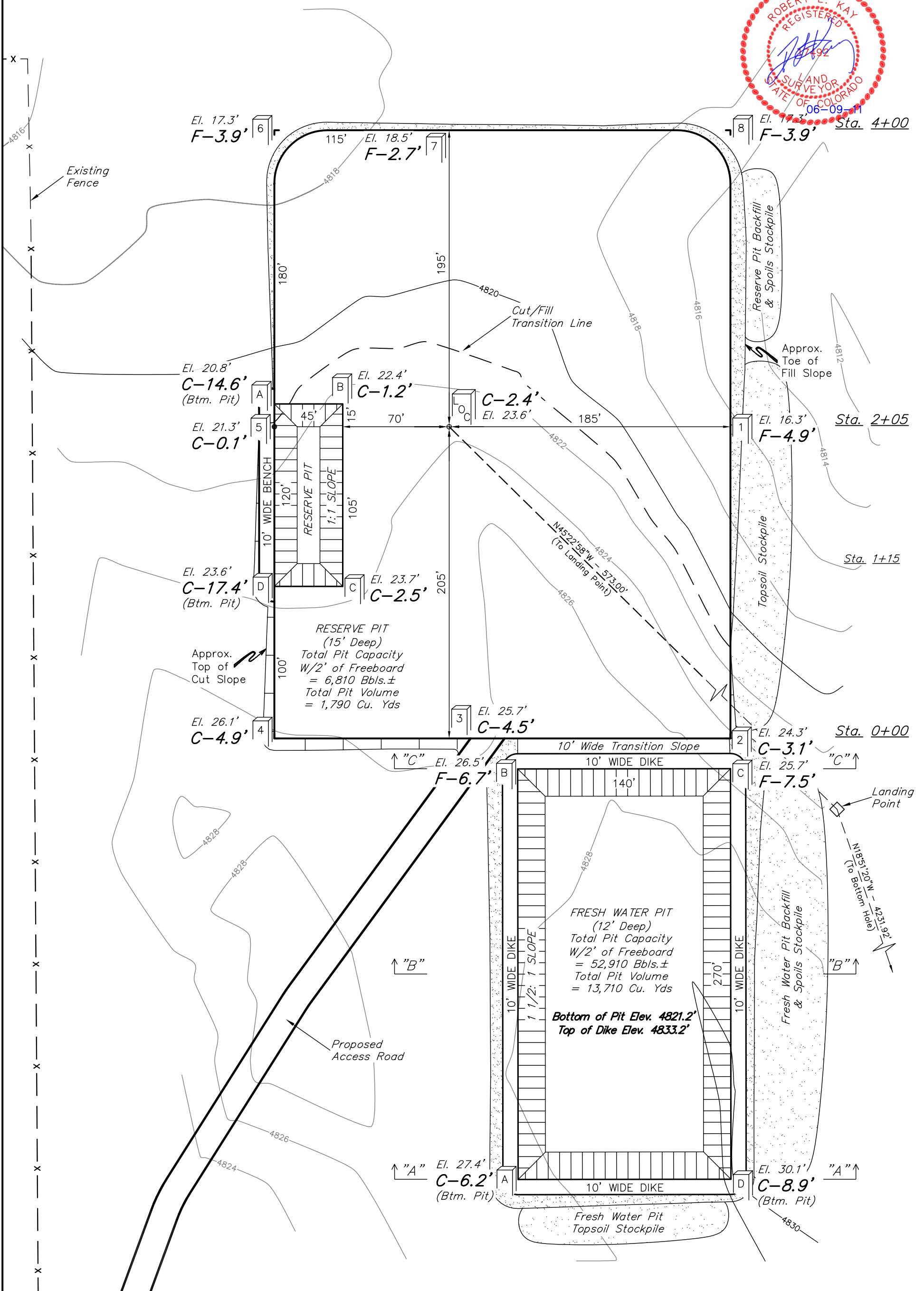
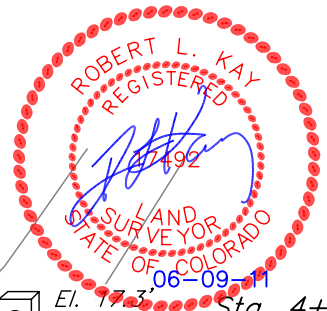


SCALE: 1" = 60'  
DATE: 06-09-11  
DRAWN BY: J.I.



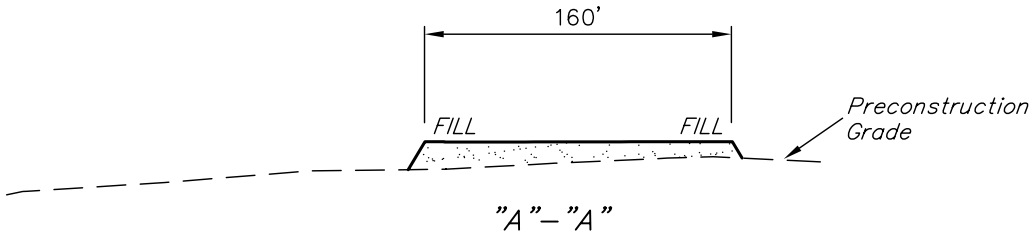
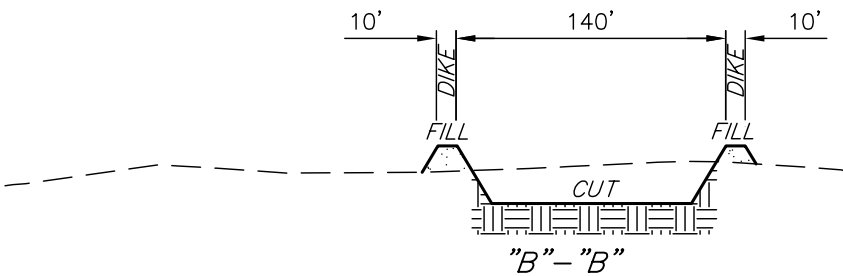
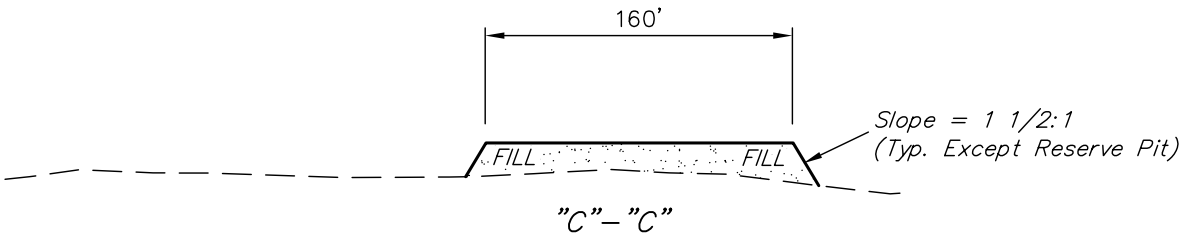
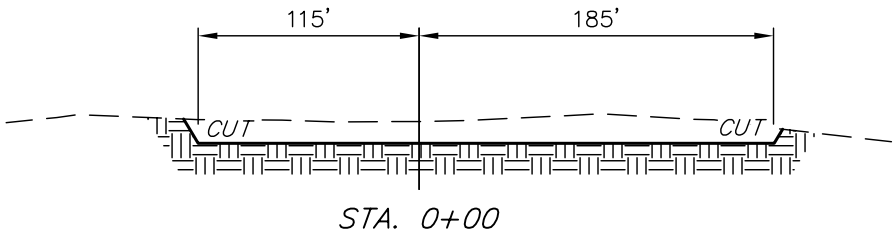
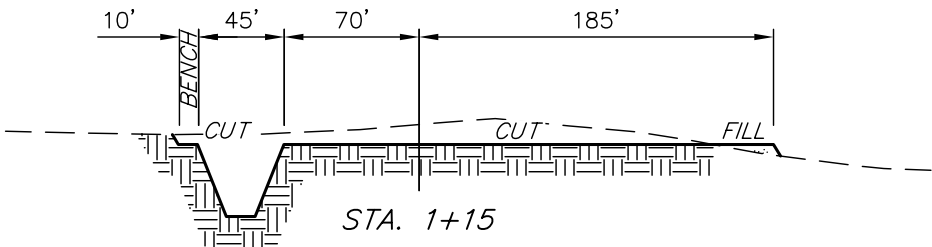
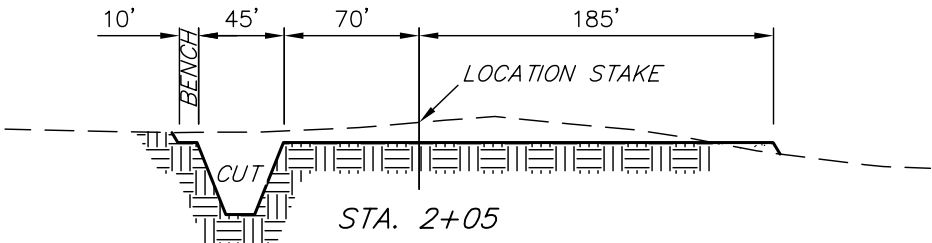
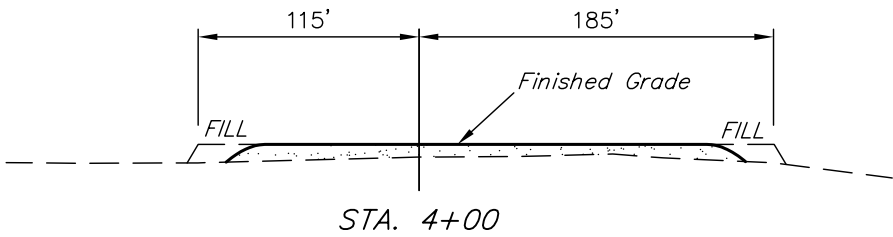
Elev. Ungraded Ground At Loc. Stake = **4823.6'**  
FINISHED GRADE ELEV. AT LOC. STAKE = **4821.2'**

UINTAH ENGINEERING & LAND SURVEYING  
85 So. 200 East \* Vernal, Utah 84078 \* (435) 789-1017

1" = 40'  
X-Section  
Scale  
1" = 100'  
DATE: 06-09-11  
DRAWN BY: J.I.

CARRIZO OIL & GAS, INC.  
CONSTRUCTION LAYOUT CROSS SECTIONS FOR  
BRINGELSON #32-44-9-58  
SECTION 32, T9N, R58W, 6th. P.M.  
245' FSL 245' FEL

FIGURE #2



APPROXIMATE PAD YARDAGES

(6") Topsoil Stripping	=	2,440 Cu. Yds.
Remaining Location	=	8,030 Cu. Yds.
TOTAL CUT	=	10,470 CU.YDS.
FILL	=	7,130 CU.YDS.
EXCESS MATERIAL	=	3,340 Cu. Yds.
Topsoil & Pit Backfill	=	3,340 Cu. Yds.
(1/2 Pit Vol.)		
EXCESS UNBALANCE	=	0 Cu. Yds.
(After Interim Rehabilitation)		

APPROXIMATE FRESH WATER PIT YARDAGES

(6") Topsoil Stripping	=	1,090 Cu. Yds.
Remaining Location	=	7,310 Cu. Yds.
TOTAL CUT	=	8,400 CU.YDS.
FILL	=	3,570 CU.YDS.
EXCESS MATERIAL	=	4,830 Cu. Yds.
Topsoil	=	1,090 Cu. Yds.
EXCESS UNBALANCE	=	3,740 Cu. Yds.
(After Interim Rehabilitation)		

NOTE:

Topsoil should not be Stripped Below Finished Grade on Substructure Area.

\* NOTE: FILL QUANTITY INCLUDES 5% FOR COMPACTION

APPROXIMATE ACREAGES

WELL SITE DISTURBANCE = ± 4.769 ACRES  
ACCESS ROAD DISTURBANCE = ± 7.037 ACRES  
TOTAL = ± 11.806 ACRES

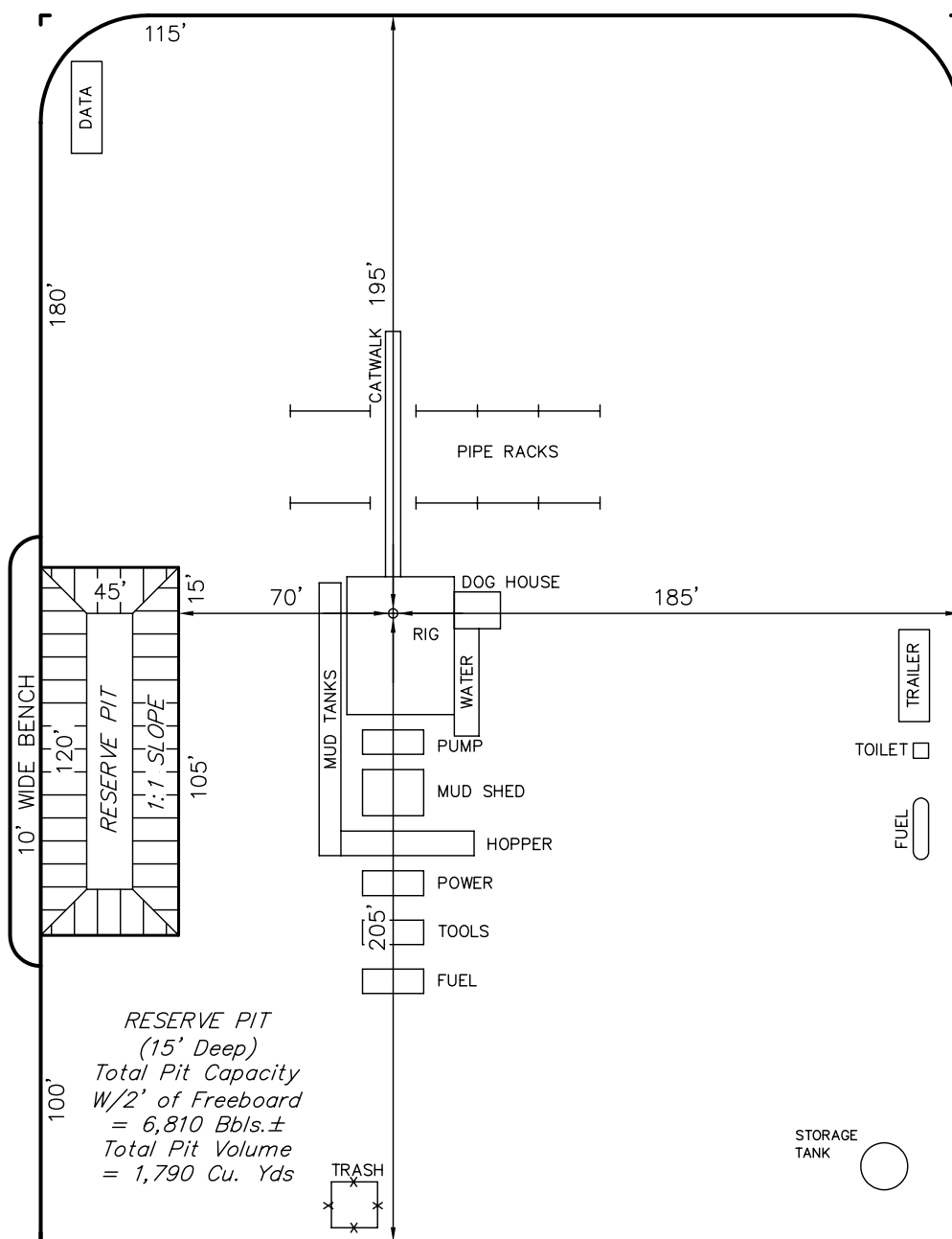
UINTAH ENGINEERING & LAND SURVEYING  
85 So. 200 East \* Vernal, Utah 84078 \* (435) 789-1017



CARRIZO OIL & GAS, INC.  
TYPICAL RIG LAYOUT FOR  
BRINGELSON #32-44-9-58  
SECTION 32, T9N, R58W, 6th. P.M.  
245' FSL 245' FEL

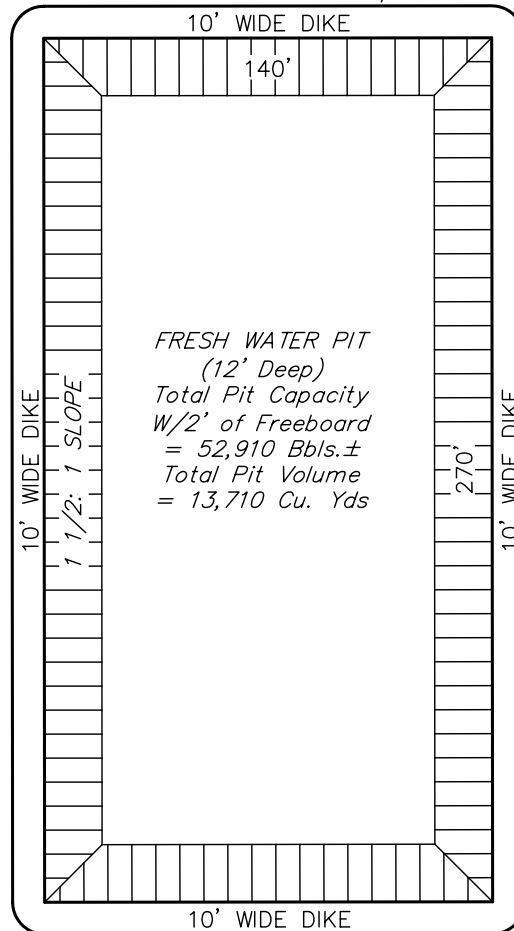
FIGURE #3

SCALE: 1" = 60'  
DATE: 06-09-11  
DRAWN BY: J.I.



RESERVE PIT  
(15' Deep)  
Total Pit Capacity  
W/2' of Freeboard  
= 6,810 Bbls.±  
Total Pit Volume  
= 1,790 Cu. Yds

10' Wide Transition Slope



Proposed Access Road