

LEGEND:

PROPOSED LOCATION

CARRIZO OIL & GAS, INC.

BRINGELSON #32-44-9-58
SECTION 32, T9N, R58W, 6th P.M.
245' FSL 245' FEL



Uintah Engineering & Land Surveying
85 South 200 East Vernal, Utah 84078
(435) 789-1017 * FAX (435) 789-1813

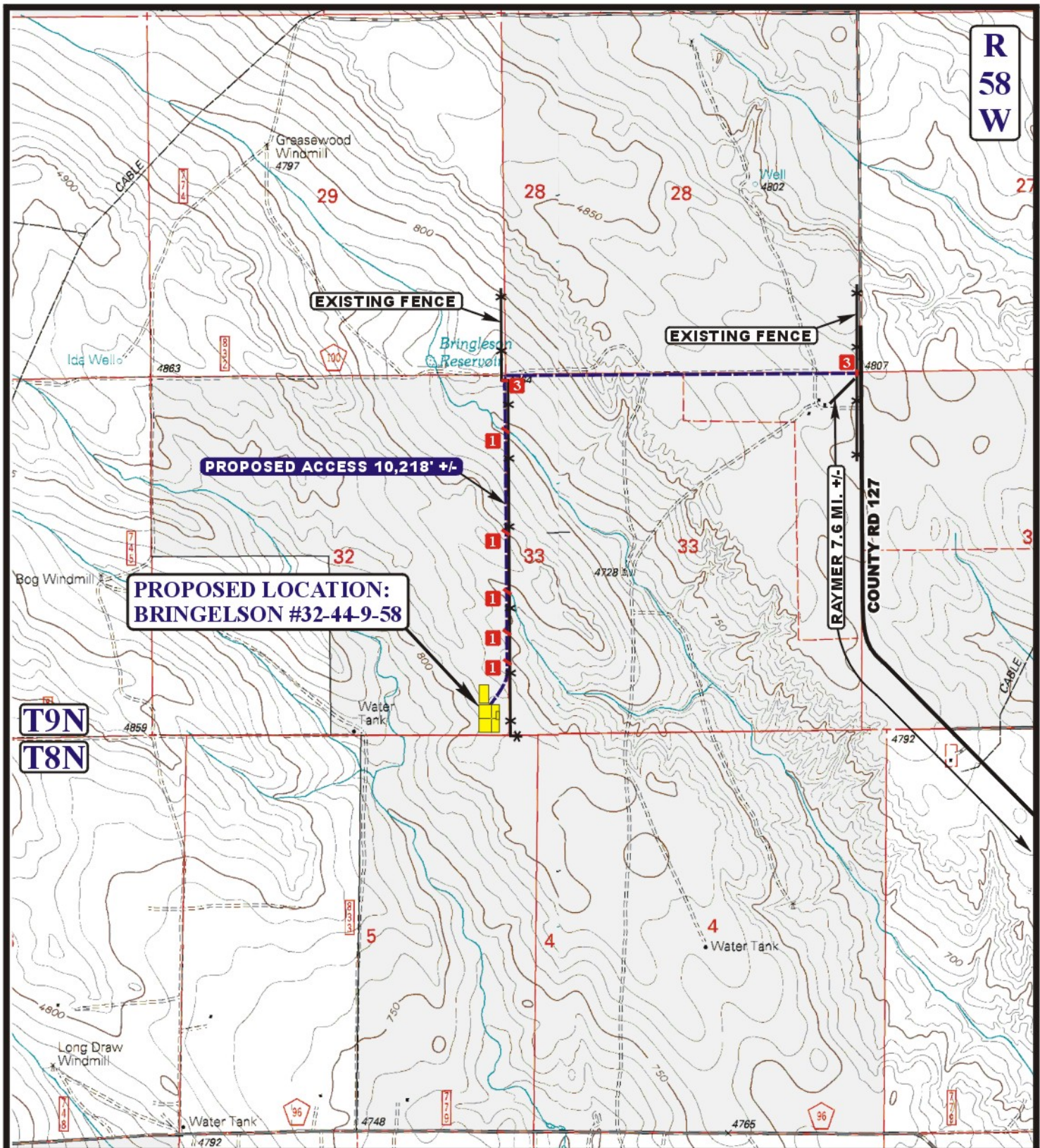


ACCESS ROAD
M A P

06 09 11
MONTH DAY YEAR

SCALE: 1:100,000 **DRAWN BY: C.A.G.** **REVISED: 00-00-00**





LEGEND:

- EXISTING ROAD
- PROPOSED ACCESS ROAD
- EXISTING FENCE
- 1 18" CMP REQUIRED
- 2 24" CMP REQUIRED
- 3 INSTALL CATTLE GUARD



Utah Engineering & Land Surveying
 85 South 200 East Vernal, Utah 84078
 (435) 789-1017 * FAX (435) 789-1813



CARRIZO OIL & GAS, INC.

BRINGELSON #32-44-9-58
SECTION 32, T9N, R58W, 6th P.M.
245' FSL 245' FEL

ACCESS ROAD
M A P

06 09 11
 MONTH DAY YEAR

SCALE: 1" = 2000' DRAWN BY: C.A.G. REVISED: 00-00-00

B
TOPO