

NORTHWEST CORNER OF SECTION 22,
T5N, R66W, OF THE 6TH. P.M., FOUND
3 1/4" A.C. IN R.B. PLS 10734

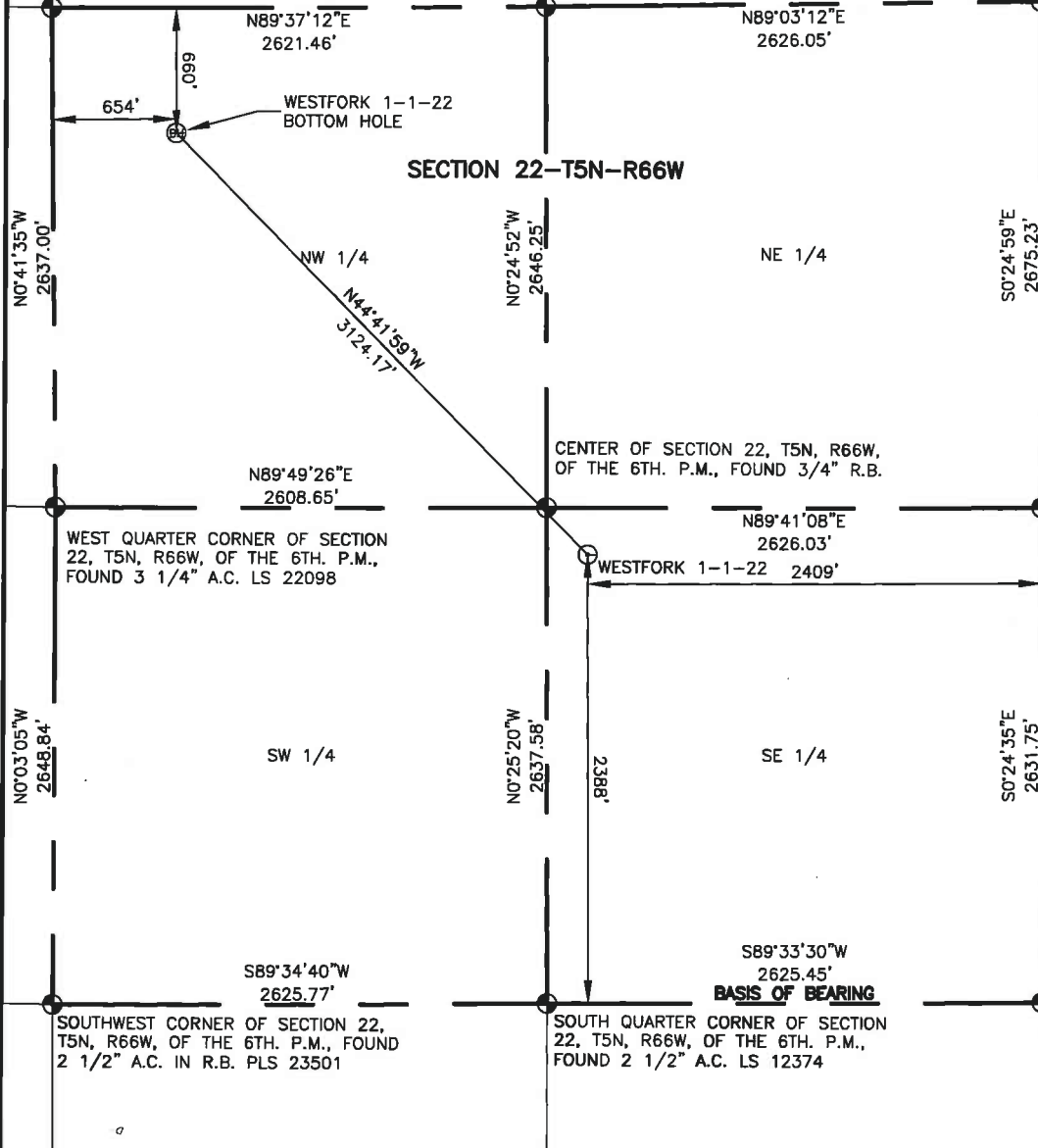
NORTH QUARTER CORNER OF SECTION
22, T5N, R66W, OF THE 6TH. P.M.,
FOUND 3 1/4" A.C. IN R.B. PLS 10734

NORTHEAST CORNER OF SECTION 22,
T5N, R66W, OF THE 6TH. P.M., FOUND
3 1/4" A.C. IN R.B. PLS 10734

WELL LOCATION DATA:

LATITUDE=40.38435°N
LONGITUDE=104.76486°W
ELEVATION=4806'
PDOP=1.4
GPS OPERATOR: Z. WADDLE
SURFACE USE-CROP LAND

SECTION 22-T5N-R66W



NOTES:

DISTANCES ARE MEASURED
PERPENDICULAR TO NEAREST SECTION
LINE AND ARE SHOWN
ON THE SAME SIDE OF THE SECTION
LINE WHERE THE WELL IS LOCATED.

BASIS OF BEARING:

THE SOUTH LINE OF THE SOUTHEAST
QUARTER OF SECTION 22-T5N-R66W
BEARS S89°33'30"W BETWEEN A 2 1/2"
A.C. AT THE SOUTHEAST CORNER OF
SECTION 22-T5N-R66W STAMPED "PLS
37947" AND THE SOUTH 1/4 CORNER
OF SECTION 22-T5N-R66W STAMPED "LS
12374" BASED ON THE COLORADO NORTH
0501 STATE PLANE COORDINATE SYSTEM.

ELEVATIONS ARE NAVD 88, USING THE
CONUS GEOID 03 AS OBSERVED FROM
GPS OBSERVATIONS

SOUTHEAST CORNER OF SECTION 22,
T5N, R66W, OF THE 6TH. P.M., FOUND
2 1/2" A.C. IN R.B. PLS 37947

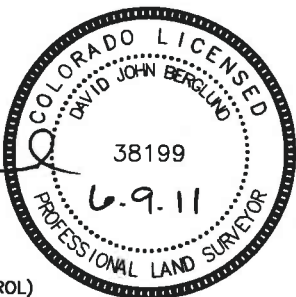
LAND SURVEYOR'S CERTIFICATION

LAMP, RYNEARSON & ASSOCIATES, INC., OF FT. COLLINS, COLORADO HAS IN ACCORDANCE WITH A
REQUEST FROM COLLIN RICHARSON FOR MINERAL RESOURCES, LLC., DETERMINED THE SURFACE
LOCATION OF THE WELL DESIGNATED AS WESTFORK 1-1-22 TO BE 2388' FROM THE SOUTH LINE
AND 2409' FROM THE EAST LINE OF SECTION 22, TOWNSHIP 5 NORTH, RANGE 66 WEST OF THE
6TH P.M., WELD COUNTY, COLORADO.

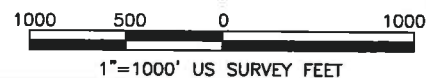
LEGEND

- ⊕ BOTTOM HOLE
- ⊙ ALIQUOT CORNER
- ⊙ PROPOSED WELL
- A.C. ALUMINUM CAP
- R.B. RANGE BOX

DAVID JOHN BERGLUND
COLORADO PLS 38199



DATE OF SURVEY: 8/19/2010 (SECTION CONTROL)
DATE OF SURVEY: 4/29/2011 (WELL LOCATION)



LAMP RYNEARSON
& ASSOCIATES

4715 Innovation Drive 970.226.0342 | P
Fort Collins, CO 80525 970.226.0879 | F
www.LRA-Inc.com

book and page
10-3, 60-67/MR 01, 2

Proposed Well Location Exhibit
Westfork 1-1-22

drawn by
KJW

date
6/10/2011

cogcc id
423341

project - task number
0210011.00

project - location

NW 1/4, SE 1/4, SECTION
22-T5N-R66W

path\\filename P:_Engineering\0210011 MRI T Bone\DRAWINGS\EXHIBITS\0210011EXWPB.dwg