

Savage and Savage *Environmental*

practical solutions for environmental issues

4610 Haystack Drive
Windsor, Colorado 80550

970 674 8080 telephone
970 674 8088 facsimile
savageandsavage@earthlink.net



Transmittal

To: Brian DeRose
Company: Noble Energy
Address: 804 Grand Avenue
City, State, Zip: Platteville, CO 80651

From: Edith Savage
Company: Savage and Savage, Inc.
Project: Lower Latham Reservoir PC G01-32D
and PC G02-22D
Phone: 970-674-8080
Fax: 970-674-8088
Date: April 4, 2011

Attached for your file is the U.S. Fish and Wildlife Service approval of the bald eagle nest concurrence request for seasonal restrictions for the Lower Latham Reservoir PC G01-32D and PC G02-22D drill pad.



United States Department of the Interior

FISH AND WILDLIFE SERVICE
Ecological Services
Colorado Field Office
P.O. Box 25486, DFC (65412)
Denver, Colorado 80225-0486

IN REPLY REFER TO:

ES/CO: BGEPA/Concurrence
65412-2010-TA-0400/CPA-0108

MAR 31 2011

Michael S. Savage
Savage and Savage Environmental
4610 Haystack Drive
Windsor, Colorado 80550

Dear Mr. Savage:

The U.S. Fish and Wildlife Service (Service) received your letter of March 25, 2011, regarding Noble Energy Inc.'s proposed oil/gas well drilling at the Lower Latham Reservoir PC G01-32D and PVC G02-22D Drill Pad in Weld County, Colorado. You requested our concurrence to proceed with the proposed project in light of its proximity to an active bald eagle nest. The following comments have been prepared based on the authority conferred to the Service by the Bald and Golden Eagle Protection Act (16 U.S.C. 668) (BGEPA).

The proposed drilling site is approximately 1,900 feet from an active bald eagle nest. Existing active oil/gas wells are much closer to the nest than is the proposed drilling site. Drilling operations would occur between August 1 and October 1, outside of the bald eagle breeding season.

Based on the information you have provided, the Service has no concerns regarding the development at this drill pad between the dates specified.

If the Service can be of further assistance, contact Peter Plage of this office at (303) 236-4750.

Sincerely,

Susan C. Linner
Colorado Field Supervisor

pc: Plage

PPlage:T&E\2010.04:033111

Savage and Savage *Environmental*

practical solutions for environmental issues

4610 Haystack Drive
Windsor, Colorado 80550

970 674 8080 telephone
970 674 8088 facsimile
savageandsavage@earthlink.net



March 25, 2011

Peter Plage, U.S. Fish and Wildlife Service
P.O. Box 25486 DFC (MS 65412)
Denver, Colorado 80225

**RE: Bald Eagle Nest Concurrence Request for Noble Energy, Inc. -
Lower Latham Reservoir PC G01-32D and PC G02-22D Drill Pad**

Dear Mr. Plage:

Noble Energy, Inc. requests concurrence to proceed with development of the Lower Latham Reservoir PC G01-32D and PC G02-22D drill pad in 2011. This proposed drill pad is located in the vicinity of an active bald eagle nest immediately east of the Lower Latham Reservoir. The drill pad is situated approximately 1900 feet (0.37 miles) northeast of the nest.

Based on your previous responses (dated June 6, 2007, July 25, 2007, August 18, 2008, June 3, 2009, September 10, 2010, and January 13, 2011) to requests for work along the Lower Latham Reservoir, and the Colorado Division of Wildlife Recommended Buffer Zones and Seasonal Restrictions for Colorado Raptors dated January 2008, the proponent requests Service concurrence with the following schedule. Drilling operations will be conducted at the proposed Lower Reservoir Latham Reservoir PC G01-32D and PC G02-22D drill pad between August 1 and October 15.

If you have any questions concerning our concurrence request or require further information about the proposed drilling activity at the Lower Latham Reservoir please contact me.

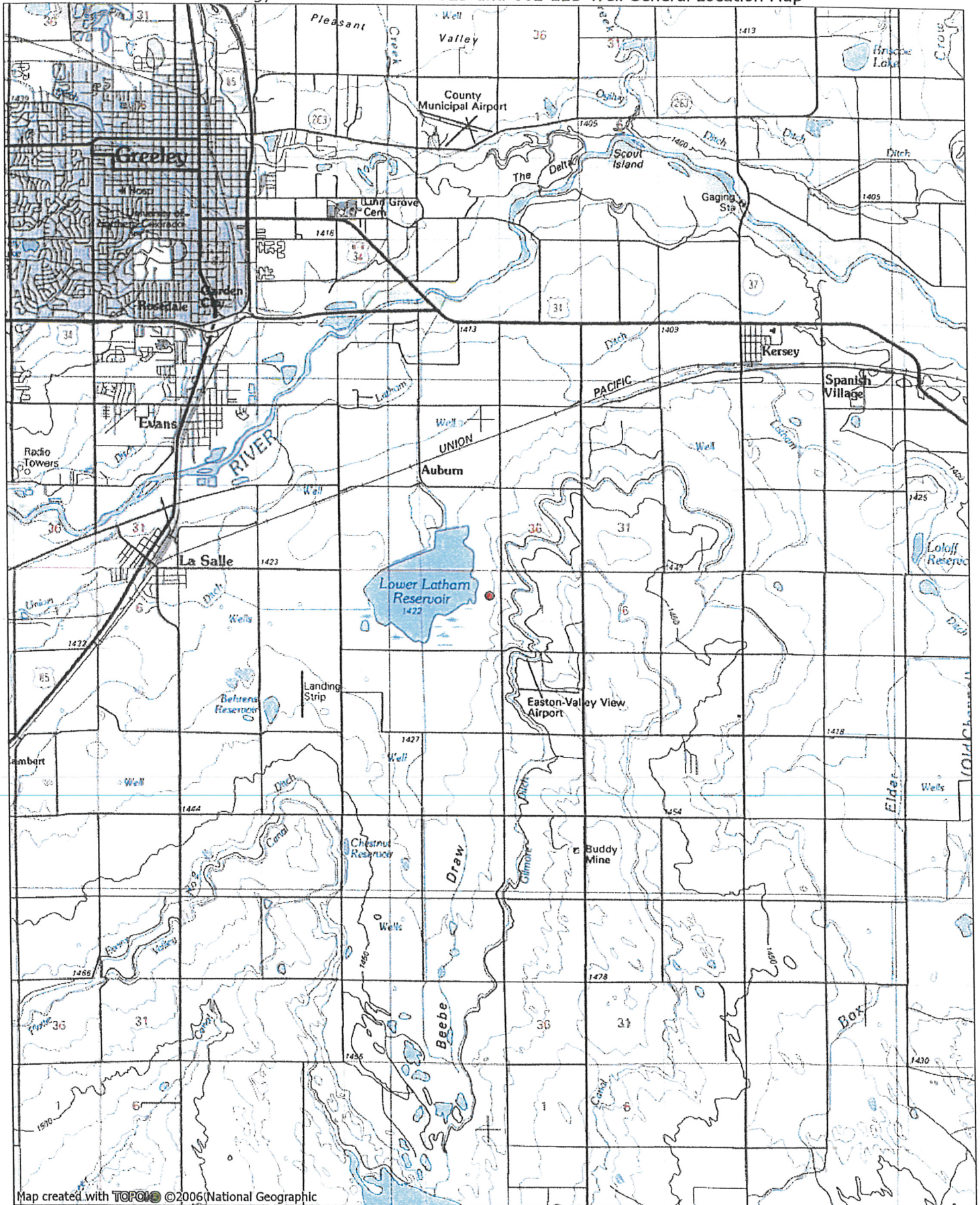
Sincerely,

Michael S. Savage

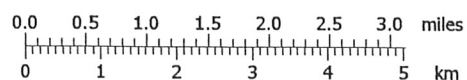
Noble Energy Lower Latham Reservoir PC G01-32D and PC G02-22D
General Location Map
Noble Energy Lower Latham Reservoir PC G01-32D and PC G02-22D
Well Locations Relative to Active Bald Eagle Nest

c: ~~Brian~~ DeRose, Noble Energy, Inc.

Noble Energy Lower Latham G01-32D and G02-22D Well General Location Map



Map created with TOPOLIS ©2006 National Geographic



TN MN
9 1/2°
03/24/11

Noble Energy Lower Latham Reservoir PC G01-32D and PC G02-22D Well Locations Relative to Active Bald Eagle Nest



© 2011 Google

© 2011 Google

Data © 2011 NOAA, U.S. Navy, NGA, GEBCO
Image © 2011 DigitalGlobe

1250 ft

Bald Eagle Nest

G01-32D

Gilmore Ditch