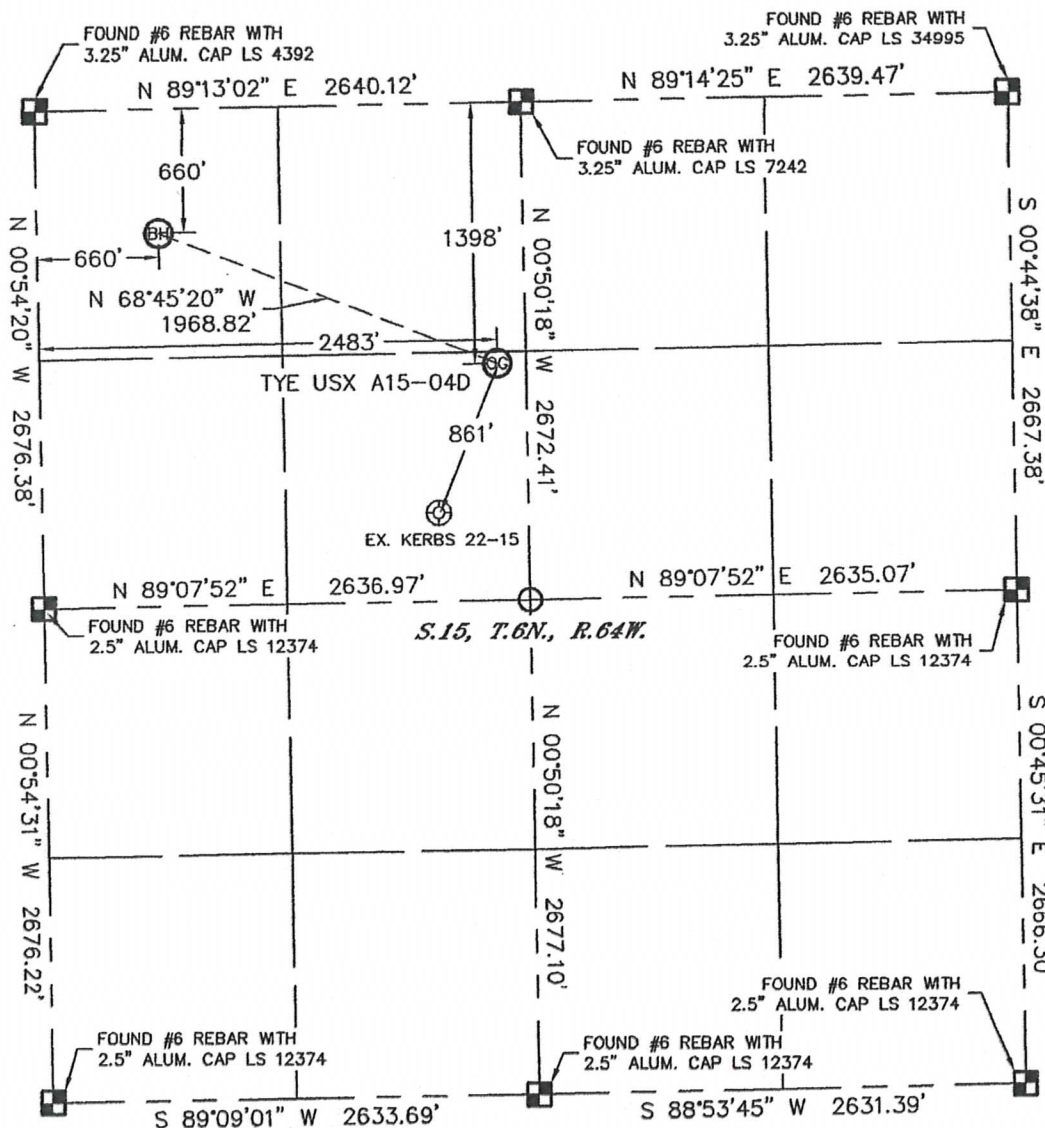


# WELL LOCATION CERTIFICATE

THIS MAP DOES NOT REPRESENT A BOUNDARY SURVEY

SECTION: 15  
TOWNSHIP: 6N  
RANGE: 64W



In accordance with a request from Matt Campbell with Noble Energy Inc., Lat40°, Inc. has determined the surface location of the TYE USX A15-04D to be 1398' from the NORTH line and 2483' from the WEST line and the bottom hole to be 660' from the NORTH line and 660' from the WEST line as measured at right angles from the section lines of Section 15, Township 6 North, Range 64 West of the Sixth Principal Meridian, County of Weld, State of Colorado.

I hereby state that this Well Location Certificate was prepared by me, or under my direct supervision, that the fieldwork was completed on 3/22/11, for and on behalf of Noble Energy Inc. That this is not a Land Survey Plat or an Improvement Survey Plat, and that it is not to be relied upon for establishment of fence, building, or other future improvement lines.

## NOTE:

- 1) Bearings shown are Grid Bearings of the Colorado State Plane Coordinate System, North Zone, North American Datum 1983/2007. The lineal dimensions as contained herein are based upon the "U.S. Survey Foot."
- 2) Ground elevations are based on an observed GPS elevation (NAVD 1988 DATUM).
- 3) NEAREST EXISTING WELL: KERBS 22-15, 861'
- 4) IMPROVEMENTS: See LOCATION DRAWING for all visible improvements within 400' of disturbed area.
- 5) SURFACE USE: PASTURE
- 6) INSTRUMENT OPERATOR: ADAM KELLY

SURFACE LOCATION  
LATITUDE: 40.48957N  
LONGITUDE: 104.53683W  
PDOP: 1.3  
ELEV: 4797'  
1/4,1/4: SE1/4NW1/4  
NEAREST PROPERTY LINE: 155' EAST

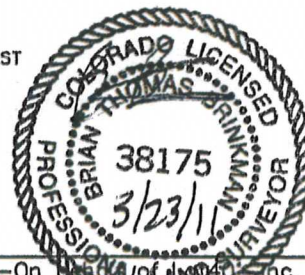
BOTTOM HOLE  
LATITUDE: 40.49159N  
LONGITUDE: 104.54339W

## NOTE

According to Colorado law, you must commence any legal action based upon any defect in this W.L.C. within three years after you discover such defect. In no event, may any action based upon any defect in this survey be commenced more than ten years after the date of the certificate shown hereon. (13-80-105 C.R.S.)

## LEGEND

- = ALIQUOT MONUMENT AS DESCRIBED
- = CALCULATED POSITION

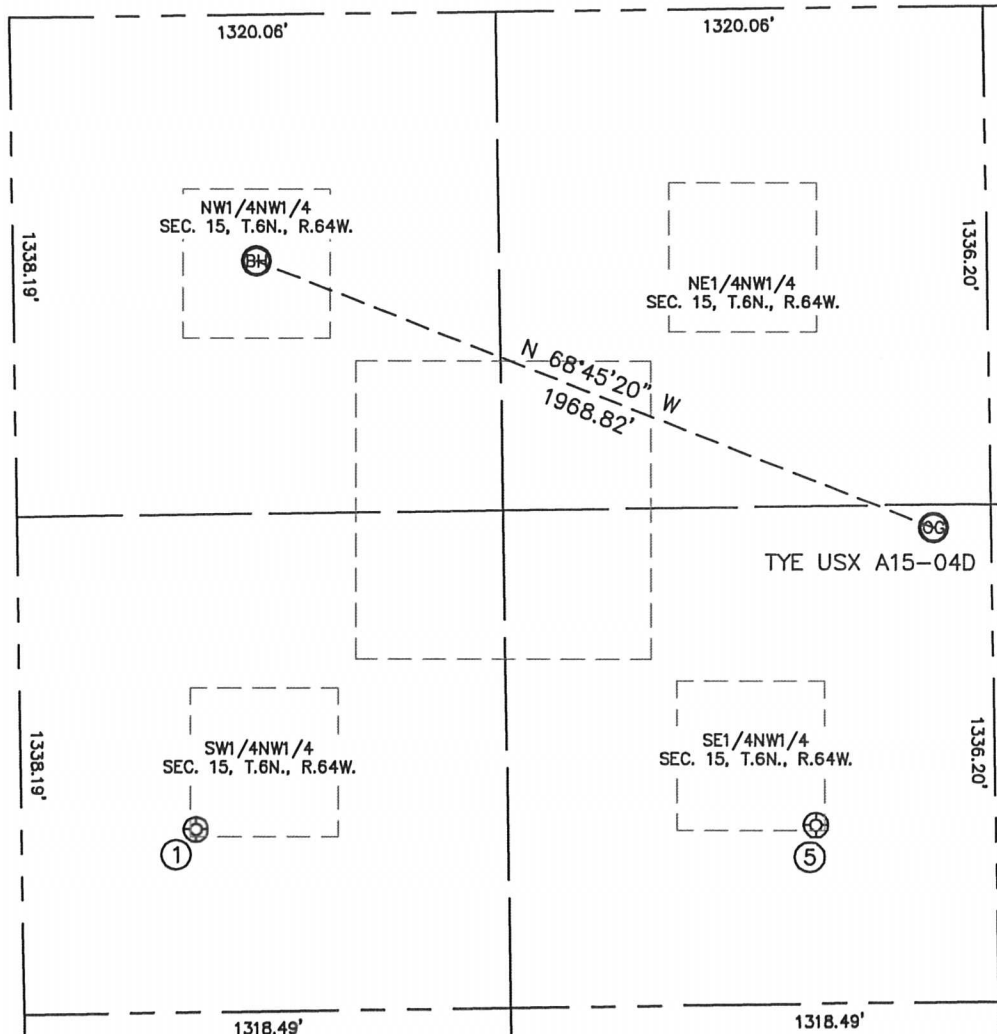


Brian T. Brinkman-On Behalf of Lat40°, Inc.  
Colorado Licensed Professional  
Land Surveyor No. 38175  
PROJECT#: 2011074

Loveland, CO 80538

TYE USX A15-04D

SECTION: 15  
TOWNSHIP: 6N  
RANGE: 64W



①  
KERBS 12-15  
SW1/4NW1/4  
2184' FNL  
472' FWL  
LAT-40.48740°N  
LONG-104.54404°W  
PDOP:1.7  
ELEV: 4812'

⑤  
KERBS 22-15  
SE1/4NW1/4  
2193' FNL  
2151' FWL  
LAT-40.48739°N  
LONG-104.53801°W  
PDOP: 2.1  
ELEV: 4806'

