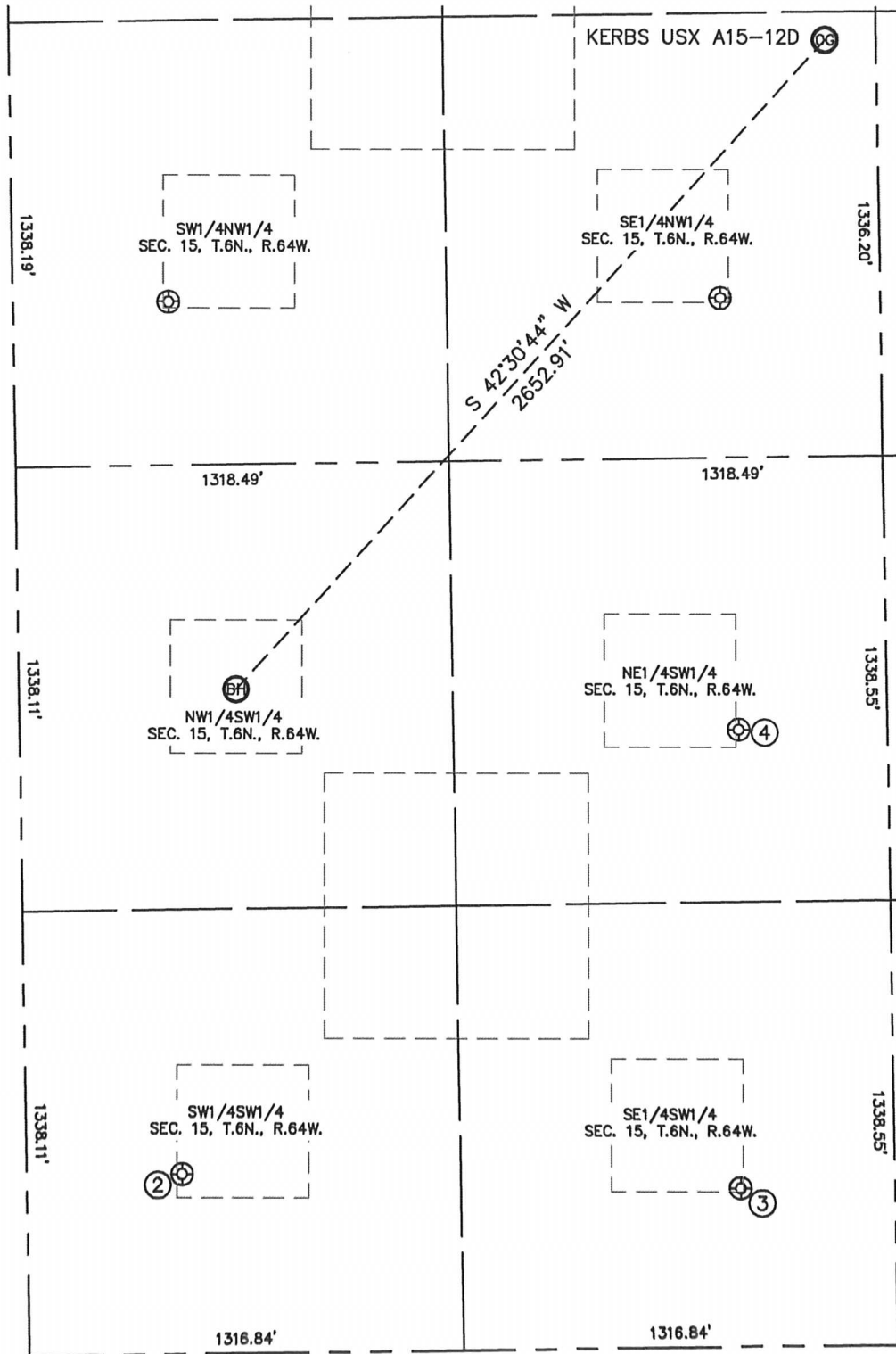


SITE SKETCH

KERBS USX A15-12D

SECTION: 15
TOWNSHIP: 6N
RANGE: 64W



②
KERBS 14-15
SW1/4SW1/4
542' FSL
472' FWL
LAT-40.48020°N
LONG-104.54399°W
PDOP: 1.8
ELEV: 4756'

③
KERBS 24-15
SE1/4SW1/4
477' FSL
2186' FWL
LAT-40.48004°N
LONG-104.53790°W
PDOP: 1.9
ELEV: 4784'

④
KERBS 23-15
NE1/4SW1/4
1858' FSL
2185' FWL
LAT-40.48382°N
LONG-104.53786°W
PDOP: 2.2
ELEV: 4794'

