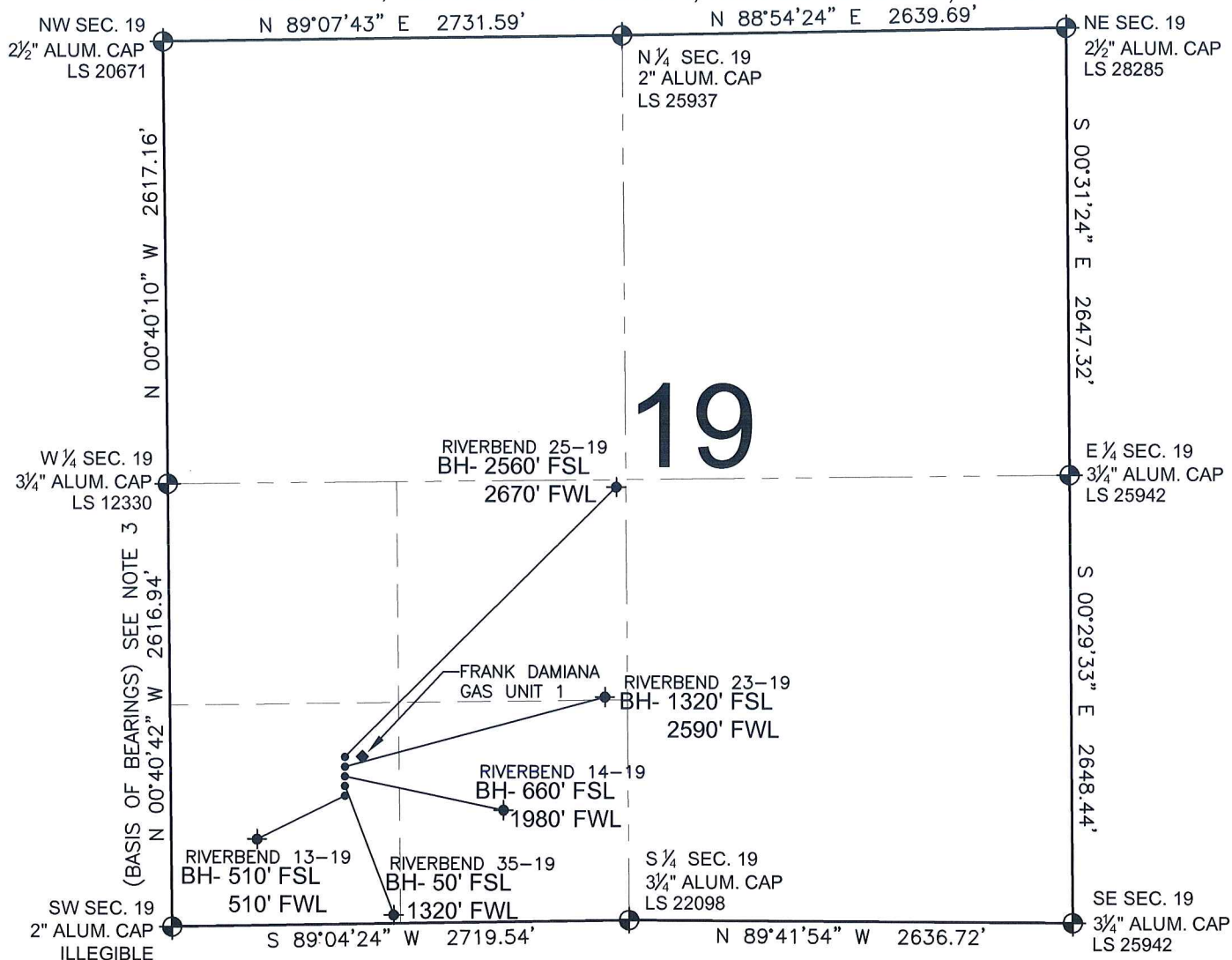


# PAD DRAWING - RIVERBEND 5 PAD

SECTION 19, TOWNSHIP 1 NORTH, RANGE 66 WEST, 6TH P.M.



## LEGEND

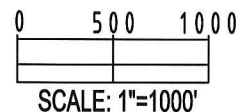
- = EXISTING MONUMENT   
 = BOTTOM HOLE   
 BH= BOTTOM HOLE  
 = PROPOSED WELL   
 = EXISTING WELL

## NOTES:

- THIS SURVEY WAS DONE BY GPS METHODS AND CONFORMS TO THE MINIMUM STANDARDS SET BY THE C.O.G.C.C., RULE NO. 215
- ELEVATIONS SHOWN AT THE WELL HEAD, AS WELL AS HORIZONTAL CONTROL, ARE BASED ON GPS-RTK VALUES DERIVED FROM DOING 2-HOUR STATIC GPS SESSIONS AND REDUCTIONS USING O.P.U.S. SOLUTIONS.  
VERTICAL = NAVD88; HORIZONTAL = NAD83/92
- THE BEARINGS SHOWN HEREON ARE BASED ON GPS OBSERVATIONS BETWEEN THE MONUMENTS SHOWN HEREON AS FOUND ON THE FIELD DATE BELOW.
- DISTANCES SHOWN ARE AT GROUND LEVEL, AS MEASURED IN THE FIELD, WITH TIES TO WELLS MEASURED AT A PERPENDICULAR TO SECTION LINES.

## NOTES:

- RIVERBEND 13-19 TO BE AT 926' FSL, 1024' FWL.  
 BOTTOM HOLE AT 510' FSL & 510' FWL.  
 RIVERBEND 35-19 TO BE AT 942' FSL, 1027' FWL.  
 BOTTOM HOLE AT 50' FSL & 1320' FWL.  
 RIVERBEND 14-19 TO BE AT 957' FSL, 1031' FWL.  
 BOTTOM HOLE AT 660' FSL & 1980' FWL.  
 RIVERBEND 23-19 TO BE AT 973' FSL, 1034' FWL.  
 BOTTOM HOLE AT 1320' FSL & 2590' FWL.  
 RIVERBEND 25-19 TO BE AT 989' FSL, 1038' FWL.  
 BOTTOM HOLE AT 2560' FSL & 2670' FWL.  
 FRANK DAMIANA GAS UNIT 1 IS 989' FSL, 1088' FWL.



## REVISIONS

INITIAL	DATE

PREPARED BY:

**PFS**

Petroleum Field Services, LLC  
1801 W. 13th Ave.  
Denver, CO 80204



KERR-MCGEE OIL & GAS ONSHORE LP

FIELD DATE:  
04-23-10

DRAWING DATE:  
04-26-10

BY:  
SMF

PAD NAME:  
RIVERBEND 5 PAD

SURFACE LOCATION:

WELD COUNTY, COLORADO  
SW 1/4 SW 1/4, SEC. 19, T1N, R66W