



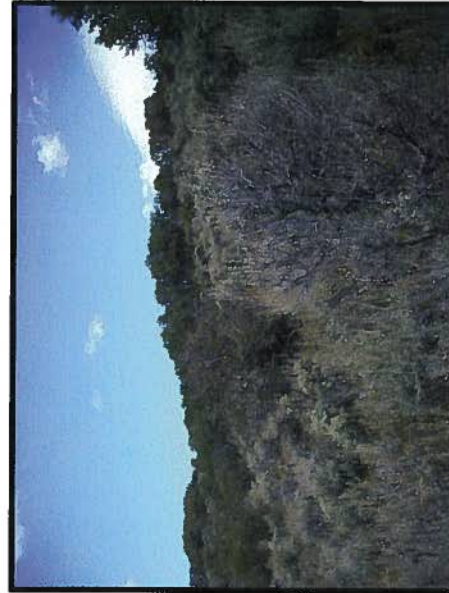
NW CORNER OF PAD LOOKING SOUTHEASTERLY
SEPTEMBER 22, 2009



NE CORNER OF PAD LOOKING SOUTHWESTERLY
SEPTEMBER 22, 2009



SW CORNER OF PAD LOOKING NORTHEASTERLY
SEPTEMBER 22, 2009



SE CORNER OF PAD LOOKING NORTHWESTERLY
SEPTEMBER 22, 2009

MARATHON OIL COMPANY
PICEANCE BASIN COLORADO

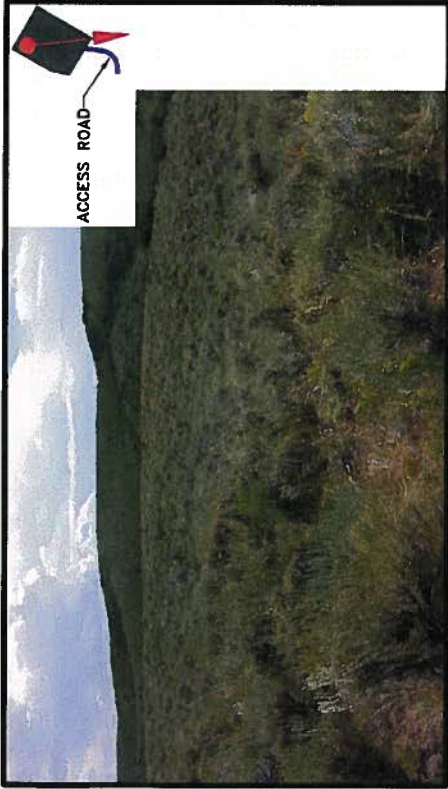
REFERENCE AREA 2
PHOTOS FOR 596-30C
GARFIELD COUNTY, COLORADO



C-K
ASSOCIATES, LLC
BATON ROUGE, LOUISIANA

Drawn:	eeb/AV9.3
Checked:	KEN
Approved:	KEN
Date:	2/2/10
Dwg. No.:	A4332E-102

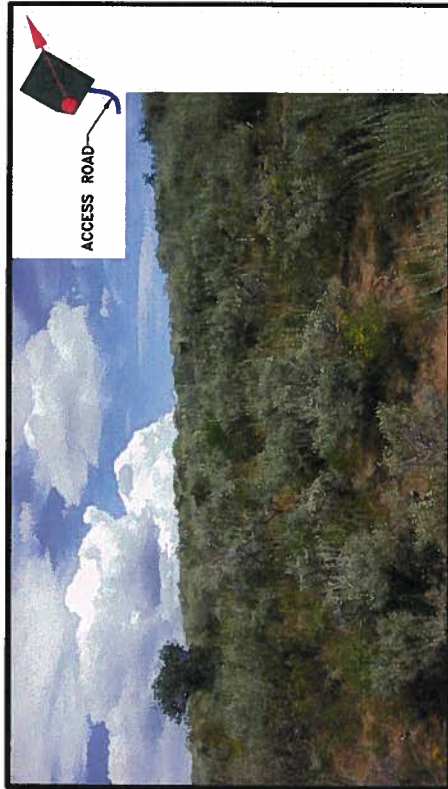
FIGURE 4 OF 6



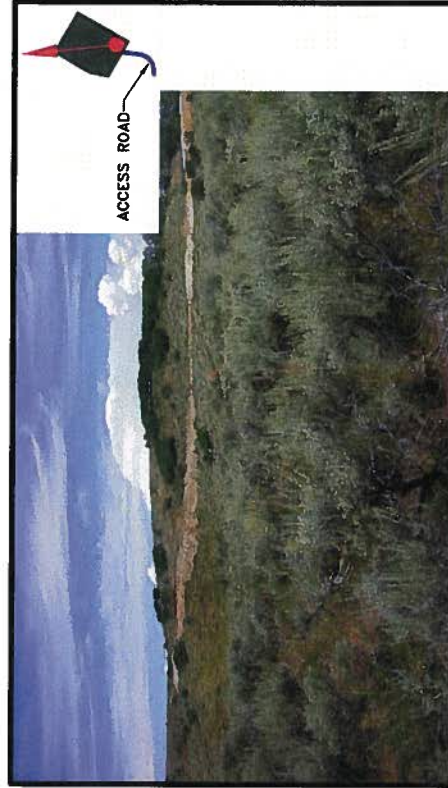
N CORNER OF PAD LOOKING SOUTHERLY
AUGUST 28, 2007



E CORNER OF PAD LOOKING WESTERLY
AUGUST 28, 2007



W CORNER OF PAD LOOKING NORTHERLY
AUGUST 28, 2007



S CORNER OF PAD LOOKING NORTHERLY
AUGUST 28, 2007

MARATHON OIL COMPANY
PICEANCE BASIN COLORADO

**WELL PAD PHOTOS
FOR 596-30C**

GARFIELD COUNTY, COLORADO



ESRI
ANALYST
CONSULTANT



C-K
ASSOCIATES, LLC
BATON ROUGE, LOUISIANA

Drawn: eeb/AV9.3

Checked: KEN

Approved: KEN

Date: 2/2/10

Dwg. No.: A4332E-100

FIGURE 2 OF 6