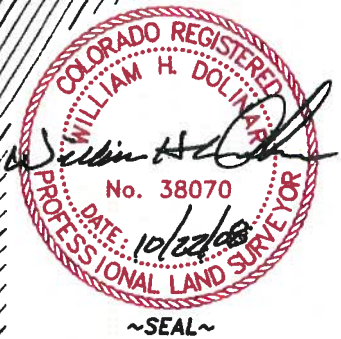
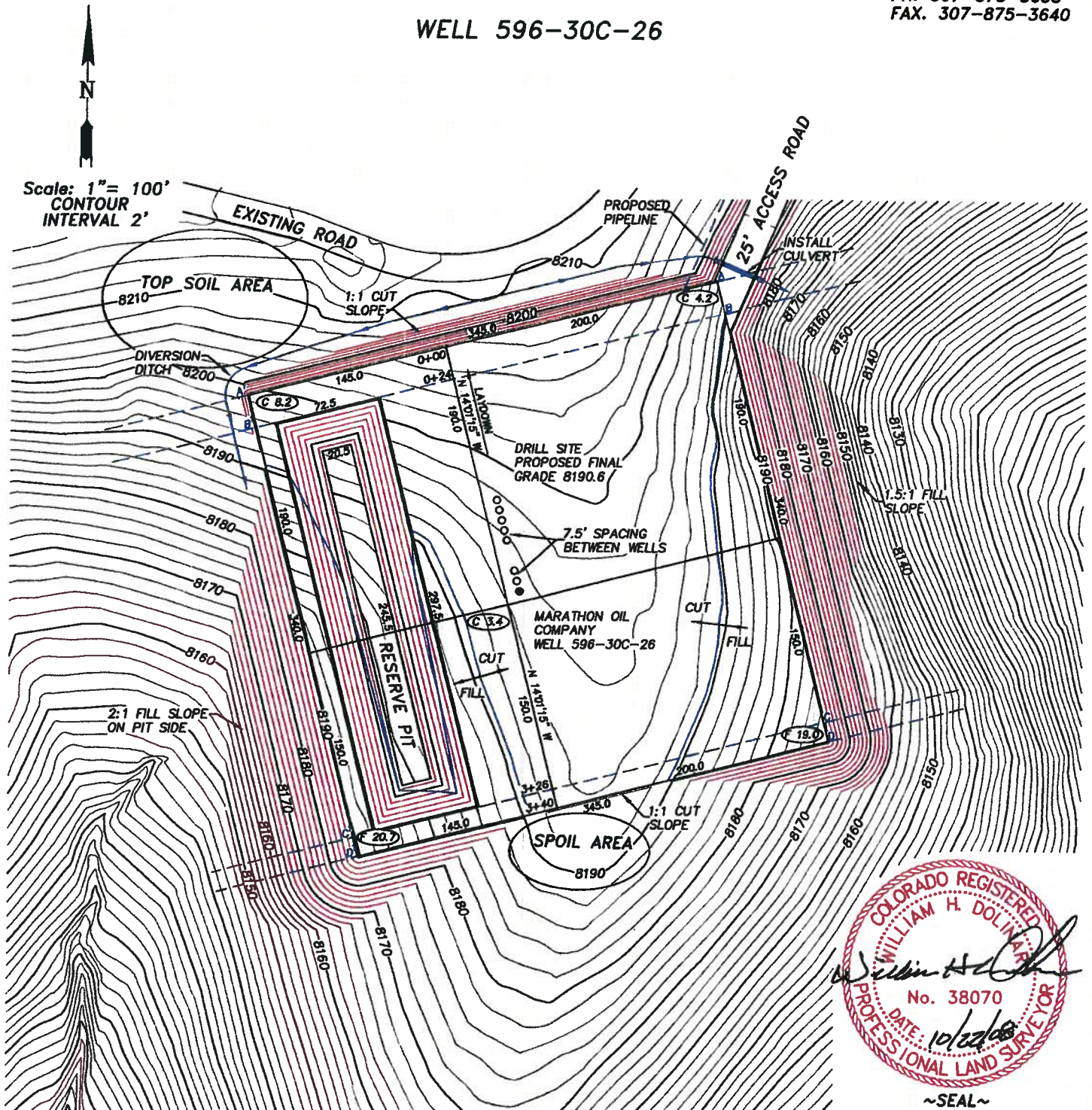


WILLIAM H. SMITH & ASSOCIATES P.C.  
SURVEYING CONSULTANTS  
MARATHON OIL COMPANY

P.O. BOX 820  
GREEN RIVER, WYOMING 82935

550 EAST 2ND NORTH  
PH. 307-875-3638  
FAX. 307-875-3640

WELL 596-30C-26



RESERVE PIT SIZE  
297.5' X 72.5' X 13'  
SLOPE = 2:1

RESERVE PIT CAPACITY  
29,768 BBLs FULL  
22,802 BBLs WORKING  
CAPACITY WITH 2' FREE BOARD

JOB NO. 26099  
10/21/2008 CED  
PAD596-30C/PAD 596-30C.DWG

CUT/FILL SLOPES: SHOWN ON PLAN  
QUANTITIES:  
TOTAL CUT = 25,092 BANK CUBIC YARDS  
TOTAL FILL = 21,630 BANK CUBIC YARDS  
TOPSOIL AT 6 INCHES OF DEPTH = 3,043 BANK CUBIC YARDS  
SPOIL = 419 BANK CUBIC YARDS  
DISTURBED AREA = 164,344 SQ. FT. OR 3.77 ACRES

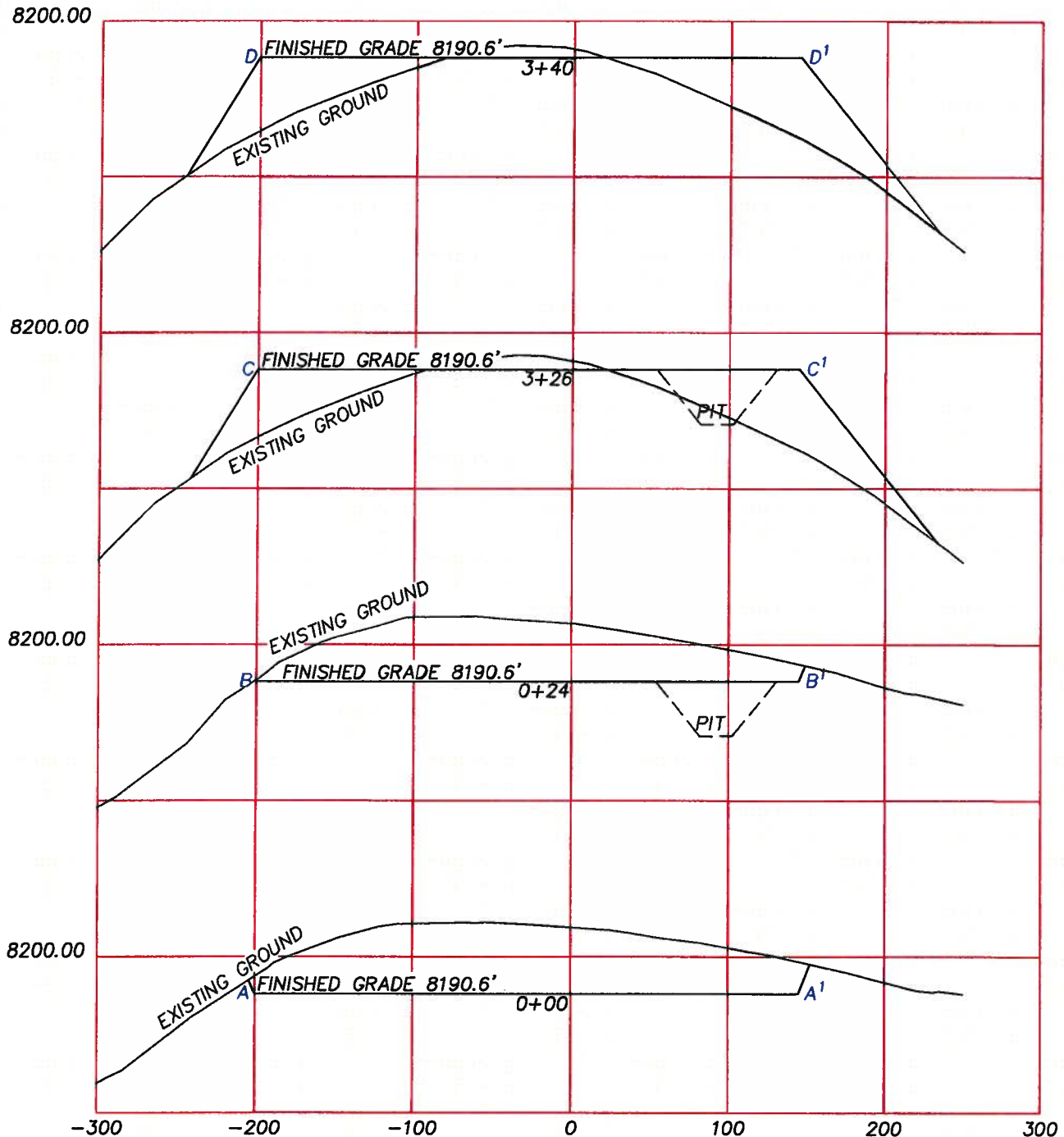
PREPARED FOR:  
MARATHON OIL COMPANY  
P.O. Box 3128  
Houston, TX 77253  
5555 San Felipe  
Houston, TX 77056

LOCATION:  
WELL 596-30C-26  
1151' FWL and 2387' FSL WELL FALLS  
WITHIN LOT 3, SECTION 30,  
T 5 S, R 96 W, 6TH PM.  
GARFIELD COUNTY, COLORADO  
SHEET 1 OF 4

WILLIAM H. SMITH & ASSOCIATES P.C.  
SURVEYING CONSULTANTS  
MARATHON OIL COMPANY  
PAD 596-30C

P.O. BOX 820  
GREEN RIVER, WYOMING 82935

550 EAST 2ND NORTH  
PH. 307-875-3638  
FAX. 307-875-3640



HORIZONTAL SCALE: 1"=100 FEET  
VERTICAL SCALE: 1"=40 FEET

RESERVE PIT SIZE  
297.5' X 72.5' X 13'  
SLOPE = 2:1

RESERVE PIT CAPACITY  
29,768 BBLs FULL  
22,602 BBLs WORKING  
CAPACITY WITH 2' FREE BOARD

JOB NO. 26099  
10/21/2008 CED  
PAD596-30C/PAD 596-30C.DWG

CUT/FILL SLOPES: SHOWN ON PLAN  
QUANTITIES:  
TOTAL CUT = 25,092 BANK CUBIC YARDS  
TOTAL FILL = 21,630 BANK CUBIC YARDS  
TOPSOIL AT 6 INCHES OF DEPTH = 3,043 BANK CUBIC YARDS  
SPOIL = 419 BANK CUBIC YARDS  
DISTURBED AREA = 164,344 SQ. FT. OR 3.77 ACRES

PREPARED FOR:  
MARATHON OIL COMPANY  
P.O. Box 3128  
Houston, TX 77253  
5555 San Felipe  
Houston, TX 77056

LOCATION:  
PAD 596-30C  
WITHIN LOT 3, SECTION 30,  
T 5 S, R 96 W, 6TH PM.  
GARFIELD COUNTY, COLORADO  
SHEET 2 OF 4

**P.O. BOX 820  
GREEN RIVER, WYOMING 82935**

### PAD 596-30C DIRECTION LAYOUT



JOB NO. 26099  
10/21/2008 CED  
PAD596-30C/PAD596-30C DRILL DIRECTION.DWG

LOCATION:  
PAD 596-30C  
WITHIN LOT 3 SECTION 30,  
T5S, R96W, 6TH PM.  
GARFIELD COUNTY, COLORADO  
SHEET 3 OF 4

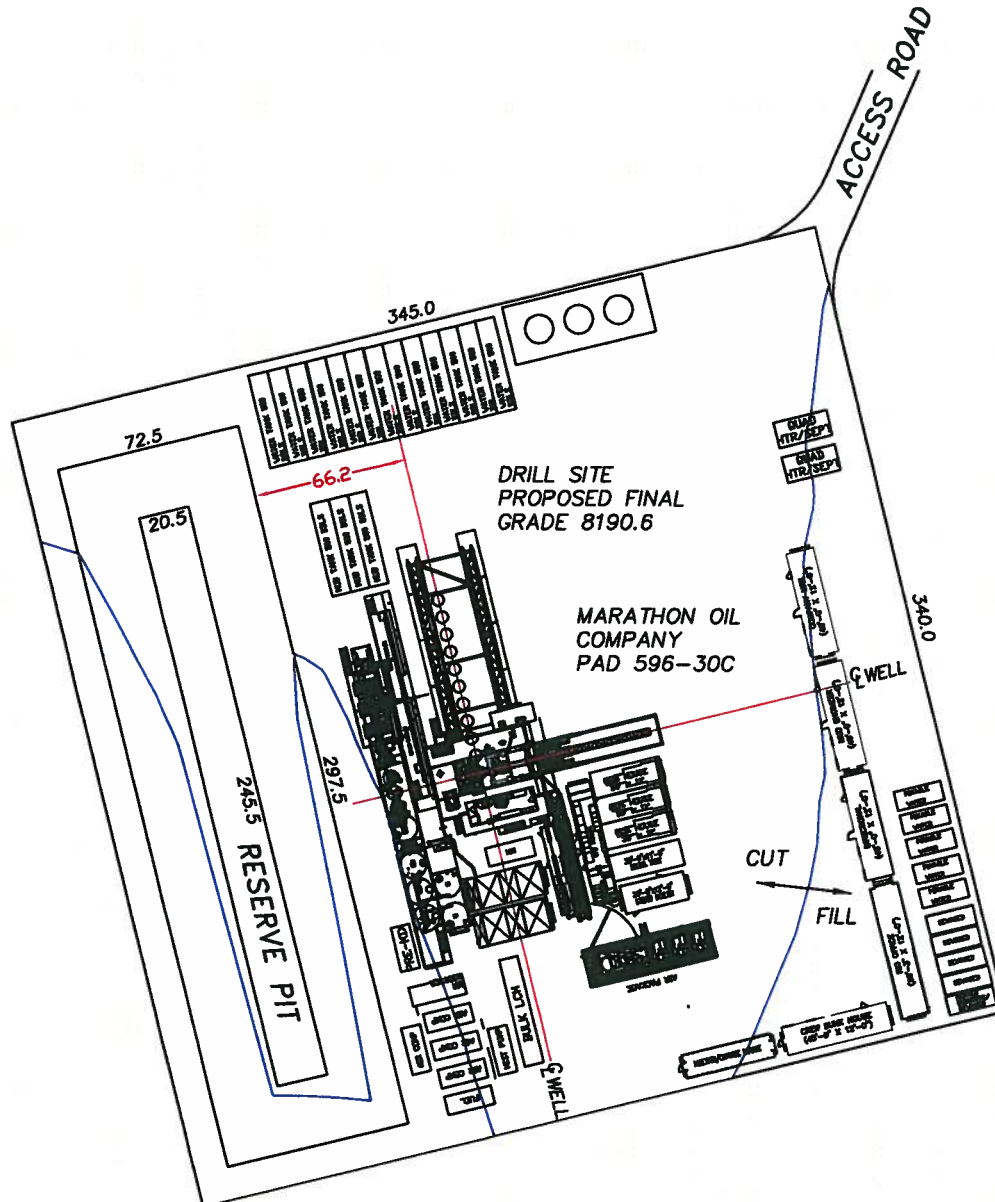
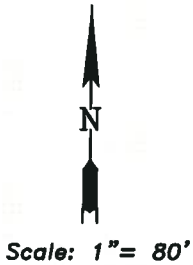


WILLIAM H. SMITH & ASSOCIATES P.C.  
SURVEYING CONSULTANTS  
MARATHON OIL COMPANY

P.O. BOX 820  
GREEN RIVER, WYOMING 82935

550 EAST 2ND NORTH  
PH. 307-875-3638  
FAX. 307-875-3640

PAD 596-30C FACILITIES LAYOUT



RESERVE PIT SIZE  
297.5' X 72.5' X 13'  
SLOPE = 2:1

RESERVE PIT CAPACITY  
29,768 BBLs FULL  
22,602 BBLs WORKING  
CAPACITY WITH 2' FREE BOARD

JOB NO. 26099  
10/21/2008 CED  
PAD596-30C/PAD596-30C FACILITIES.DWG

PREPARED FOR:  
MARATHON OIL COMPANY  
P.O. Box 3128  
Houston, TX 77253  
5555 San Felipe  
Houston, TX 77056

LOCATION:  
PAD 596-30C  
WITHIN LOT 3 SECTION 30,  
T 5 S, R 96 W, 6TH PM.  
GARFIELD COUNTY, COLORADO  
SHEET 4 OF 4