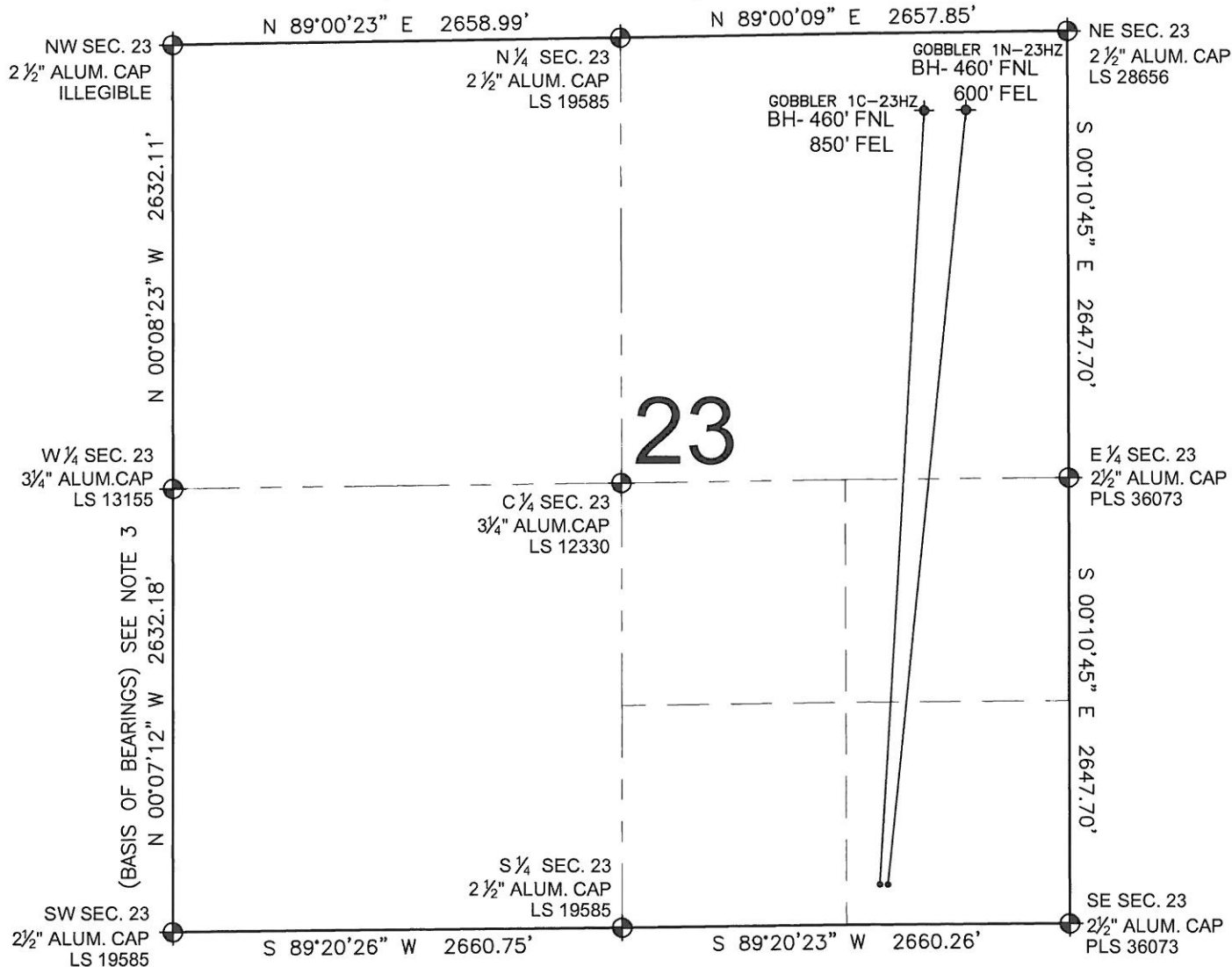


# PAD DRAWING: GOBBLER 2 PAD

## SECTION 23, TOWNSHIP 2 NORTH, RANGE 66 WEST, 6TH P.M.



### LEGEND

- ⊕ = EXISTING MONUMENT
- ⊙ = PROPOSED WELL
- ⬮ = BOTTOM HOLE
- ⬮ = EXISTING WELL
- BH= BOTTOM HOLE

### NOTES:

- THIS FIELD SURVEY CONFORMS TO THE MINIMUM STANDARDS SET BY THE C.O.G.C.C., RULE NO. 215
- HORIZONTAL POSITIONS AND ORTHOMETRIC ELEVATIONS SHOWN AT THE WELL HEAD, ARE BASED ON GPS-RTK POSITIONS DERIVED FROM MINIMUM 2-HOUR STATIC OBSERVATIONS CORRECTED BY THE NATIONAL GEODETIC SURVEY ONLINE POSITIONING USER SERVICE, O.P.U.S. DATUM: HORIZONTAL = NAD83/2007, VERTICAL = NAVD88
- THE BASIS OF BEARINGS ARE STATE PLANE COORDINATE SYSTEM GRID BEARINGS SHOWN HEREON BETWEEN THE DESCRIBED THE MONUMENTS SHOWN HEREON.
- GRID DISTANCES ARE SHOWN, AS MEASURED IN THE FIELD, WITH TIES TO WELLS MEASURED PERPENDICULAR TO SECTION LINES.

### NOTES:

- GOBBLER 1C-23HZ TO BE AT 240' FSL, 1130' FEL.  
BOTTOM HOLE AT 460' FNL & 850' FEL.  
GOBBLER 1N-23HZ TO BE AT 240' FSL, 1100' FEL.  
BOTTOM HOLE AT 460' FNL & 600' FEL.

PREPARED BY:

**PFS**

Petroleum Field Services, LLC  
1801 W. 13th Ave.  
Denver, CO 80204



KERR-MCGEE OIL & GAS ONSHORE LP

FIELD DATE:  
05-20-11

DRAWING DATE:  
05-23-11

BY:  
SMF

PAD NAME:  
GOBBLER 2 PAD

SURFACE LOCATION:

WELD COUNTY, COLORADO  
SE 1/4 SE 1/4, SEC. 23, T2N, R66W

