

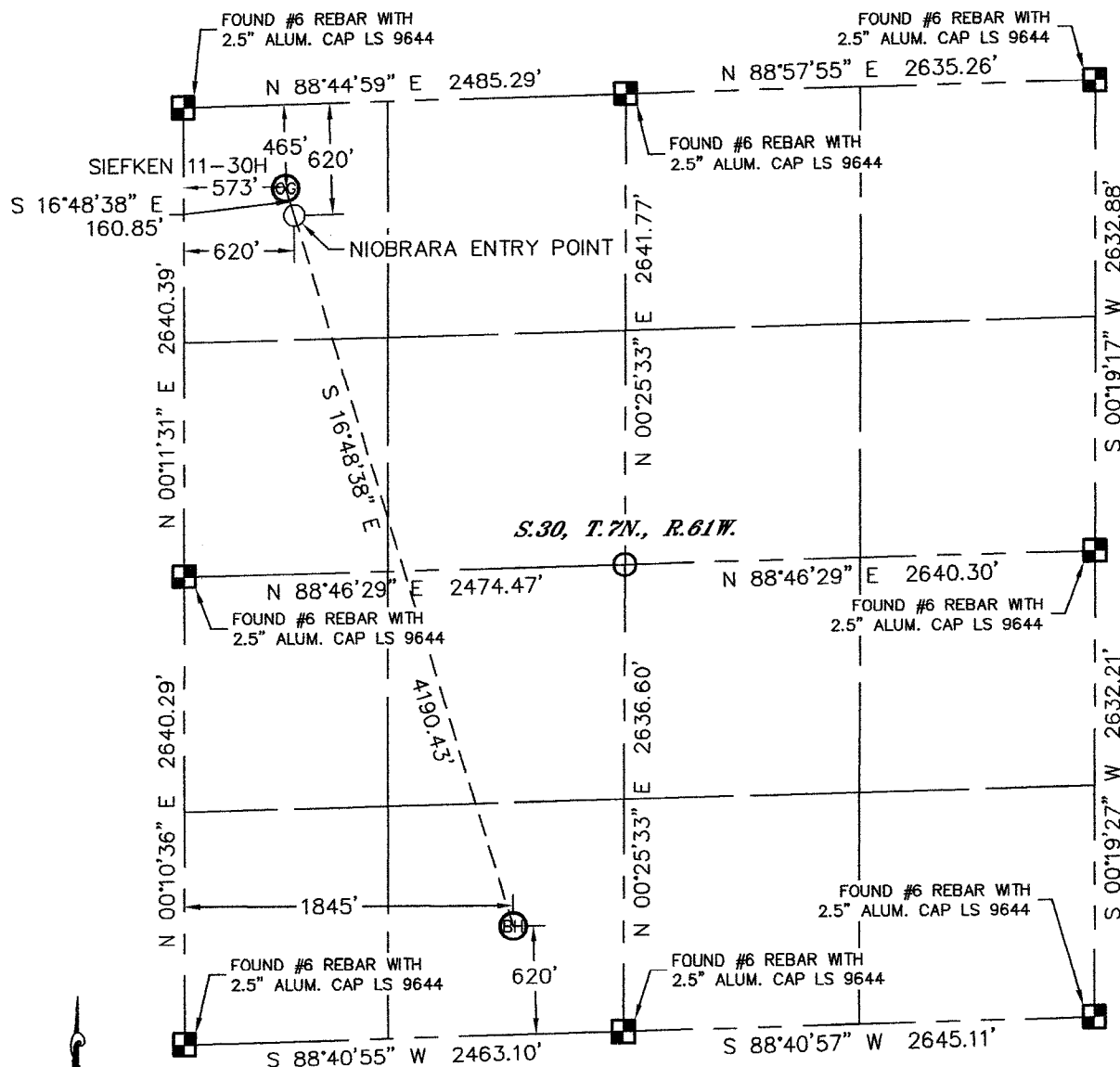


Lat40°, Inc. 1635 Foxtrail Drive, Suite 325 Loveland, CO 80538

# WELL LOCATION CERTIFICATE

THIS MAP DOES NOT REPRESENT A BOUNDARY SURVEY

SECTION: 30  
TOWNSHIP: 7N  
RANGE: 61W



In accordance with a request from JARED RUSH with TEXAS AMERICAN RESOURCES CO. Lat40°, Inc. has determined the surface location of the SIEFKEN 11-30H to be 465' from the NORTH line and 573' from the WEST line and the bottom hole to be 620' from the SOUTH line and 1845' from the WEST line as measured at right angles from the section lines of Section 30, Township 7 North, Range 61 West of the Sixth Principal Meridian, County of Weld, State of Colorado.

I hereby state that this Well Location Certificate was prepared by me, or under my direct supervision, that the fieldwork was completed on 3/28/11, for and on behalf of TEXAS AMERICAN RESOURCES CO. That this is not a Land Survey Plat or an Improvement Survey Plat, and that it is not to be relied upon for establishment of fence, building, or other future improvement lines.

## NOTE:

- 1) Bearings shown are Grid Bearings of the Colorado State Plane Coordinate System, North Zone, North American Datum 1983/2007. The lineal dimensions as contained herein are based upon the "U.S. Survey Foot."
- 2) Ground elevations are based on an observed GPS elevation (NAVD 1988 DATUM).
- 3) IMPROVEMENTS: See LOCATION DRAWING for all visible improvements within 400' of disturbed area.
- 4) SURFACE USE: DRYLAND CROP
- 5) INSTRUMENT OPERATOR: ADAM KELLY

## NOTE

According to Colorado law, you must commence any legal action based upon any defect in this W.L.C. within three years after you discover such defect. In no event, may any action based upon any defect in this survey be commenced more than ten years after the date of the certificate shown hereon. (13-80-105 C.R.S.)

## LEGEND



= ALIQUOT MONUMENT AS DESCRIBED



= CALCULATED POSITION

SURFACE LOCATION  
LATITUDE: 40.55146°N  
LONGITUDE: 104.25820°W  
PDOP: 1.2  
ELEV: 4820'  
1/4, 1/4: NW1/4NW1/4 (GOV'T LOT 1)  
NEAREST PROPERTY LINE: 465' NORTH

BOTTOM HOLE  
LATITUDE: 40.53998°N  
LONGITUDE: 104.25389°W

NIOBRARA ENTRY POINT  
LATITUDE: 40.55104°N  
LONGITUDE: 104.25804°W



Brian T. Brinkman—On behalf of Lat40°, Inc.  
Colorado Licensed Professional  
Land Surveyor No. 38175 PROJECT#: 2010160