
OXY GRAND JUNCTION EBUSINESS

**CC 697-09-17B
GRAND VALLEY
Garfield County , Colorado**

**Cement Surface Casing
06-Mar-2011**

Post Job Report

The Road to Excellence Starts with Safety

Sold To #: 344034		Ship To #: 2841175		Quote #:		Sales Order #: 7840278	
Customer: OXY GRAND JUNCTION EBUSINESS				Customer Rep: COOMBS, HENRY			
Well Name: CC			Well #: 697-09-17B			API/UWI #: 05-045-18150	
Field: GRAND VALLEY		City (SAP): PARACHUTE		County/Parish: Garfield		State: Colorado	
Lat: N 39.542 deg. OR N 39 deg. 32 min. 30.872 secs.				Long: W 108.238 deg. OR W -109 deg. 45 min. 42.512 secs.			
Contractor: H&P 353			Rig/Platform Name/Num: H&P353				
Job Purpose: Cement Surface Casing							
Well Type: Development Well				Job Type: Cement Surface Casing			
Sales Person: DUNNING, DUSTIN			Srvc Supervisor: ANDREWS, ANTHONY			MBU ID Emp #: 321604	

Job Personnel

HES Emp Name	Exp Hrs	Emp #	HES Emp Name	Exp Hrs	Emp #	HES Emp Name	Exp Hrs	Emp #
ANDREWS, ANTHONY Michael		321604	BRENNECKE, ANDREW Bailey		486345	CUNNINGHAM, TANNER Wade		445660
LYNGSTAD, FREDRICK D		403742	MAIN, CHAD R		335770	RAMSEY, STANTON Michael		477609
SANCHEZ, ERIC David		487084						

Equipment

HES Unit #	Distance-1 way	HES Unit #	Distance-1 way	HES Unit #	Distance-1 way	HES Unit #	Distance-1 way

Job Hours

Date	On Location Hours	Operating Hours	Date	On Location Hours	Operating Hours	Date	On Location Hours	Operating Hours
3/5/11	12	5	3/6/11	5	3			
TOTAL			Total is the sum of each column separately					

Job

Job Times

Formation Name				Date	Time	Time Zone
Formation Depth (MD)	Top	Bottom		Called Out	05 - Mar - 2011	03:30 MST
Form Type	BHST			On Location	05 - Mar - 2011	11:30 MST
Job depth MD	2725. ft	Job Depth TVD	2725. ft	Job Started	05 - Mar - 2011	22:03 MST
Water Depth		Wk Ht Above Floor	4. ft	Job Completed	06 - Mar - 2011	02:07 MST
Perforation Depth (MD)	From	To		Departed Loc	06 - Mar - 2011	04:00 MST

Well Data

Description	New / Used	Max pressure psig	Size in	ID in	Weight lbm/ft	Thread	Grade	Top MD ft	Bottom MD ft	Top TVD ft	Bottom TVD ft
-------------	------------	-------------------	---------	-------	---------------	--------	-------	-----------	--------------	------------	---------------

Sales/Rental/3rd Party (HES)

Description	Qty	Qty uom	Depth	Supplier
PLUG,CMTG, TOP, 9 5/8, HWE, 8.16 MIN/9.06 MA	1	EA		
R/A DENSOMETER W/CHART RECORDER, /JOB, ZI	1	JOB		
PORT. DATA ACQUIS. W/OPTICEM RT W/HES	1	EA		
ADC (AUTO DENSITY CTRL) SYS, /JOB, ZI	1	JOB		

Tools and Accessories

Type	Size	Qty	Make	Depth	Type	Size	Qty	Make	Depth	Type	Size	Qty	Make
Guide Shoe					Packer					Top Plug			
Float Shoe					Bridge Plug					Bottom Plug			
Float Collar					Retainer					SSR plug set			
Insert Float										Plug Container			
Stage Tool										Centralizers			

Miscellaneous Materials

Gelling Agt	Conc	Surfactant	Conc	Acid Type	Qty	Conc	%
Treatment Fld	Conc	Inhibitor	Conc	Sand Type	Size	Qty	

Fluid Data									
Stage/Plug #: 1									
Fluid #	Stage Type	Fluid Name	Qty	Qty uom	Mixing Density lbm/gal	Yield ft ³ /sk	Mix Fluid Gal/sk	Rate bbl/min	Total Mix Fluid Gal/sk
1	Water Spacer		20.00	Bbl	8.33	.0	.0	.0	
2	GEL WATER SPACER		20.00	Bbl	8.4	.0	.0	.0	
0.25 gal/bbl		LGC-36 UC, BULK (101582749)							
3	Water Spacer		20.00	Bbl	.	.0	.0	.0	
4	Lead Cement	VERSACEM (TM) SYSTEM (452010)	1048.0	Sacks	12.3	2.33	12.62		12.62
12.62 Gal		FRESH WATER							
5	Tail Cement	VERSACEM (TM) SYSTEM (452010)	156.0	Sacks	12.8	2.07	10.67		10.67
10.67 Gal		FRESH WATER							
6	Displacement		205.00	Bbl	.	.0	.0	.0	
7	Topout Cement	HALCEM (TM) SYSTEM (452986)	0	Sacks	12.5	1.97	10.96		10.96
10.96 Gal		FRESH WATER							
Calculated Values		Pressures		Volumes					
Displacement	205	Shut In: Instant		Lost Returns	N	Cement Slurry	492.6	Pad	
Top Of Cement	SURFACE	5 Min		Cement Returns	100	Actual Displacement	205	Treatment	
Frac Gradient		15 Min		Spacers	60	Load and Breakdown		Total Job	757.6
Rates									
Circulating	RIG	Mixing	6	Displacement	6-2	Avg. Job	6		
Cement Left In Pipe	Amount	44 ft	Reason	Shoe Joint					
Frac Ring # 1 @	ID	Frac ring # 2 @	ID	Frac Ring # 3 @	ID	Frac Ring # 4 @	ID		
The Information Stated Herein Is Correct				Customer Representative Signature					

The Road to Excellence Starts with Safety

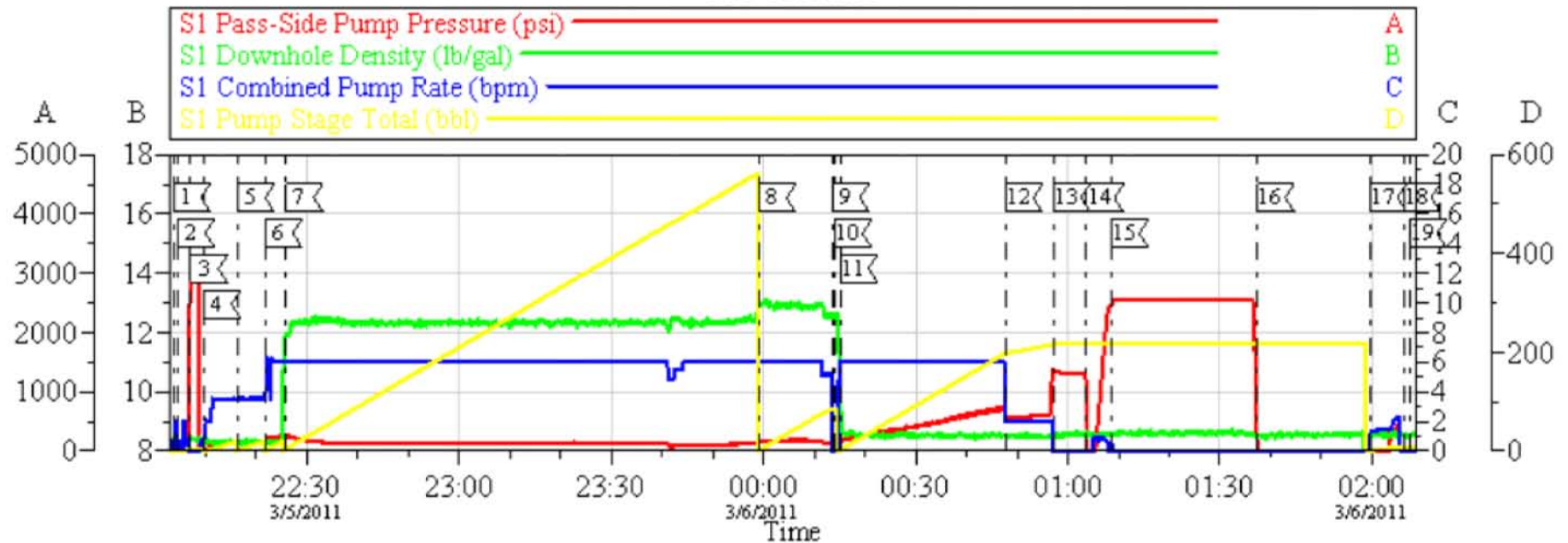
Sold To #: 344034		Ship To #: 2841175		Quote #:		Sales Order #: 7840278	
Customer: OXY GRAND JUNCTION EBUSINESS				Customer Rep: COOMBS, HENRY			
Well Name: CC			Well #: 697-09-17B			API/UWI #: 05-045-18150	
Field: GRAND VALLEY		City (SAP): PARACHUTE		County/Parish: Garfield		State: Colorado	
Legal Description:							
Lat: N 39.542 deg. OR N 39 deg. 32 min. 30.872 secs.				Long: W 108.238 deg. OR W -109 deg. 45 min. 42.512 secs.			
Contractor: H&P 353			Rig/Platform Name/Num: H&P353				
Job Purpose: Cement Surface Casing						Ticket Amount:	
Well Type: Development Well			Job Type: Cement Surface Casing				
Sales Person: DUNNING, DUSTIN			Srv Supervisor: ANDREWS, ANTHONY			MBU ID Emp #: 321604	

Activity Description	Date/Time	Cht #	Rate bbl/min	Volume bbl		Pressure psig		Comments
				Stage	Total	Tubing	Casing	
Call Out	03/05/2011 03:00							
Pre-Convoy Safety Meeting	03/05/2011 05:00							
Crew Leave Yard	03/05/2011 05:30							ONE PICK UP, THREE BULK TRUCKS, ON PUMP TRUCK
Arrive At Loc	03/05/2011 10:00							RIG WAS RUNNING CASING WHEN HES ARRIVED
Assessment Of Location Safety Meeting	03/05/2011 10:10							
Other	03/05/2011 19:00							SPOT EQUIPMENT
Pre-Rig Up Safety Meeting	03/05/2011 19:20							
Rig-Up Equipment	03/05/2011 19:30							
Pre-Job Safety Meeting	03/05/2011 21:45							
Start Job	03/05/2011 22:03							TD: 2725 TP: 2699 SJ: 44 MW: 8.9 PPG W/ AIR 9 5/8" 36#/FT CSG IN 14 3/4" OH
Test Lines	03/05/2011 22:07						2900.0	3000 PSI TEST
Pump Spacer	03/05/2011 22:09		3	20			38.0	FRESH H2O SPACER
Pump Spacer	03/05/2011 22:16		3	20			138.0	LGC GEL SPACER HES HAD CIRCULATION WITH 9 BBLs OF GEL WATER AWAY
Pump Spacer	03/05/2011 22:21		6	20			140.0	FRESH H2O SPACER

Activity Description	Date/Time	Cht #	Rate bbl/min	Volume bbl		Pressure psig		Comments
				Stage	Total	Tubing	Casing	
Pump Lead Cement	03/05/2011 22:25		6	434.8			260.0	1048 SKS @ 12.3 PPG 2.33 YLD 12.62 GAL.SK H2O
Pump Tail Cement	03/05/2011 23:59		6	57.5			156.0	156 SKS @ 12.8 PPG 2.07 YLD 10.67 GAL/SK H2O
Shutdown	03/06/2011 00:13							
Drop Plug	03/06/2011 00:14							PLUG AWAY
Pump Displacement	03/06/2011 00:15		6	195			141.0	FRESH H2O DISPLACEMENT
Slow Rate	03/06/2011 00:47		2	10			572.0	HES BROUGHT 100 BBLS OF CEMENT TO SURFACE HAD FAIR CIRCULATION THROUGH DISPLACEMENT
Bump Plug	03/06/2011 00:57		2	205.2			640.0	
Check Floats	03/06/2011 01:03						1360.0	
Pressure Test	03/06/2011 01:08						2471.0	30 MIN CUSTOMER REQUESTED CASING PRESSURE TEST
Release Casing Pressure	03/06/2011 01:37							
Other	03/06/2011 01:59		1.5	10			38.0	PUMP SUGAR WATER DOWN PARASITE STRING 10 BBLS
Shutdown	03/06/2011 02:06							
End Job	03/06/2011 02:07							
Post-Job Safety Meeting (Pre Rig-Down)	03/06/2011 02:10							PLUG BUMPED AT CALCULATED DISPLACEMENT, FLOATS HELD. PIPE WAS LEFT STATIC THROUGHOUT JOB. 4 ADD HOURS CHARGED.
Rig-Down Equipment	03/06/2011 02:20							
Pre-Convoy Safety Meeting	03/06/2011 04:30							

Activity Description	Date/Time	Cht #	Rate bbl/ min	Volume bbl		Pressure psig		Comments
				Stage	Total	Tubing	Casing	
Crew Leave Location	03/06/2011 05:00							THANK YOU FOR CHOOSING HALLIBURTON CEMENTING OF GRAND JUNCTION, COLORADO ANTHONY ANDREWS AND CREW

HP 353 - OXY
9 5/8" SURFACE



Local Event Log			
Intersection		SPPP	Intersection
1 Start Job	3/5/2011 22:03:38	1.000	2 Fill Lines
3 Pressure Test	3/5/2011 22:07:06	2906	4 Pump Fresh Water Spacer
5 Pump Gel Spacer	3/5/2011 22:16:18	138.8	6 Pump Fresh Water Spacer
7 Pump Lead Cement	3/5/2011 22:25:54	260.1	8 Pump Tail Cement
9 Shutdown	3/6/2011 00:13:32	121.1	10 Drop Plug
11 Start Displacement	3/6/2011 00:15:15	141.7	12 Slowed Rate
13 Bump Plug	3/6/2011 00:57:04	1326	14 Check Floats
15 Start Casing Pressure Test	3/6/2011 01:08:36	2471	16 Release Pressure
17 Pump Sugar Water	3/6/2011 01:59:29	5.000	18 Shutdown
19 End Job	3/6/2011 02:07:21	-4.000	

Customer: OXY
Well #: CC 697-09-17B
Customer Rep: HARRY COOMBS

Job Date: 05-Mar-2011
Job Type: SURFACE
Pump Truck: ELITE 1/ TANNER CUNNINGHAM

Sales Order #: 7840278
ADC Used: YES
Supervisor: ANTHONY ANDREWS

OptiCem v6.3.4
06-Mar-11 02:25