
OXY GRAND JUNCTION EBUSINESS

**CC 697-09-17A
GRAND VALLEY
Garfield County , Colorado**

**Cement Surface Casing
15-Mar-2011**

Post Job Summary

The Road to Excellence Starts with Safety

Sold To #: 344034		Ship To #: 2842889		Quote #:		Sales Order #: 7842144	
Customer: OXY GRAND JUNCTION EBUSINESS				Customer Rep: Benevides, Victor			
Well Name: CC			Well #: 697-09-17A			API/UWI #: 05-045-18730	
Field: GRAND VALLEY		City (SAP): PARACHUTE		County/Parish: Garfield		State: Colorado	
Lat: N 39.542 deg. OR N 39 deg. 32 min. 30.934 secs.				Long: W 108.238 deg. OR W -109 deg. 45 min. 42.566 secs.			
Contractor: H&P Drilling			Rig/Platform Name/Num: H&P 353				
Job Purpose: Cement Surface Casing							
Well Type: Development Well			Job Type: Cement Surface Casing				
Sales Person: DUNNING, DUSTIN			Srvs Supervisor: YOUNG, JEREMY			MBU ID Emp #: 418013	

Job Personnel

HES Emp Name	Exp Hrs	Emp #	HES Emp Name	Exp Hrs	Emp #	HES Emp Name	Exp Hrs	Emp #
NICKLE, RYON	13	454759	SMITH, DUSTIN Michael	13	418015	WOLFE, JON P	13	485217
YOUNG, JEREMY R	13	418013						

Equipment

HES Unit #	Distance-1 way	HES Unit #	Distance-1 way	HES Unit #	Distance-1 way	HES Unit #	Distance-1 way
10053558	120 mile	10616651C	120 mile	10867304	120 mile	10897925	120 mile
10951245	120 mile	10995025	120 mile	6543	120 mile		

Job Hours

Date	On Location Hours	Operating Hours	Date	On Location Hours	Operating Hours	Date	On Location Hours	Operating Hours
03-15-2011	13	6						

TOTAL Total is the sum of each column separately

Job

Job Times

Formation Name							Date	Time	Time Zone
Formation Depth (MD)	Top			Bottom		Called Out	14 - Mar - 2011	19:10	MST
Form Type				BHST		On Location	15 - Mar - 2011	03:00	MST
Job depth MD	2707. ft		Job Depth TVD		2707. ft	Job Started	15 - Mar - 2011	09:47	MST
Water Depth				Wk Ht Above Floor	5. ft	Job Completed	15 - Mar - 2011	13:32	MST
Perforation Depth (MD)	From			To		Departed Loc	15 - Mar - 2011	16:00	MST

Well Data

Description	New / Used	Max pressure psig	Size in	ID in	Weight lbm/ft	Thread	Grade	Top MD ft	Bottom MD ft	Top TVD ft	Bottom TVD ft
14 3/4" Open Hole				14.75				.	2725.		
9 5/8" Surface Casing	New		9.625	8.921	36.			.	2707.		

Tools and Accessories

Type	Size	Qty	Make	Depth	Type	Size	Qty	Make	Depth	Type	Size	Qty	Make
Guide Shoe					Packer					Top Plug	9.625	1	HES
Float Shoe					Bridge Plug					Bottom Plug			
Float Collar					Retainer					SSR plug set			
Insert Float										Plug Container	9.625	1	HES
Stage Tool										Centralizers			

Miscellaneous Materials

Gelling Agt		Conc		Surfactant		Conc		Acid Type		Qty		Conc	%
Treatment Fld		Conc		Inhibitor		Conc		Sand Type		Size		Qty	

Fluid Data

Stage/Plug #: 1													
Fluid #	Stage Type	Fluid Name			Qty	Qty uom	Mixing Density lbm/gal	Yield ft3/sk	Mix Fluid Gal/sk	Rate bbl/min	Total Mix Fluid Gal/sk		

Stage/Plug #: 1									
Fluid #	Stage Type	Fluid Name	Qty	Qty uom	Mixing Density lbm/gal	Yield ft ³ /sk	Mix Fluid Gal/sk	Rate bbl/min	Total Mix Fluid Gal/sk
1	Water Spacer	FRESH WATER	20.00	bbl	8.33	.0	.0	6	
2	Gel Spacer	GEL WATER	20.00	bbl	8.4	.0	.0	6	
1000 gal/Mgal		FRESH WATER							
0.25 gal/bbl		LGC-36 UC, BULK (101582749)							
3	Water Spacer		20.00	bbl	.	.0	.0	6	
4	VersaCem Lead Cement	VERSACEM (TM) SYSTEM (452010)	1015.0	sacks	12.3	2.33	12.62	6	12.62
12.62 Gal		FRESH WATER							
5	VersaCem Tail Cement	VERSACEM (TM) SYSTEM (452010)	181.0	sacks	12.8	2.07	10.67	6	10.67
10.67 Gal		FRESH WATER							
6	Displacement	FRESH WATER	205.00	bbl	.	.0	.0	6	
7	Topout Cement	HALCEM (TM) SYSTEM (452986)		sacks	12.5	1.97	10.96	N/A	10.96
10.96 Gal		FRESH WATER							
Calculated Values		Pressures		Volumes					
Displacement	205.7	Shut In: Instant		Lost Returns	YES	Cement Slurry	487.9	Pad	
Top Of Cement	SURFACE	5 Min		Cement Returns	150	Actual Displacement	205.7	Treatment	
Frac Gradient		15 Min		Spacers	60	Load and Breakdown		Total Job	753.6
Rates									
Circulating		Mixing	6	Displacement	6	Avg. Job	6		
Cement Left In Pipe	Amount	46 ft	Reason	Shoe Joint					
Frac Ring # 1 @	ID	Frac ring # 2 @	ID	Frac Ring # 3 @	ID	Frac Ring # 4 @	ID		
The Information Stated Herein Is Correct				Customer Representative Signature					

The Road to Excellence Starts with Safety

Sold To #: 344034	Ship To #: 2842889	Quote #:	Sales Order #: 7842144
Customer: OXY GRAND JUNCTION EBUSINESS		Customer Rep: Benevides, Victor	
Well Name: CC	Well #: 697-09-17A	API/UWI #: 05-045-18730	
Field: GRAND VALLEY	City (SAP): PARACHUTE	County/Parish: Garfield	State: Colorado
Legal Description:			
Lat: N 39.542 deg. OR N 39 deg. 32 min. 30.934 secs.		Long: W 108.238 deg. OR W -109 deg. 45 min. 42.566 secs.	
Contractor: H&P Drilling		Rig/Platform Name/Num: H&P 353	
Job Purpose: Cement Surface Casing			Ticket Amount:
Well Type: Development Well		Job Type: Cement Surface Casing	
Sales Person: DUNNING, DUSTIN		Srv Supervisor: YOUNG, JEREMY	MBU ID Emp #: 418013

Activity Description	Date/Time	Cht #	Rate bbl/min	Volume bbl		Pressure psig		Comments
				Stage	Total	Tubing	Casing	
Call Out	03/14/2011 19:10							TD 2725 FT, TP 2707 FT, SHOT 46 FT, HOLE 14 3/4 IN, MUD WT 9.4 PPG, CSG 9 5/8 IN 36 LB/FT
Crew Leave Yard	03/14/2011 21:00							
Pre-Convoy Safety Meeting	03/14/2011 21:45							WITH ALL HES PERSONNEL
Arrive At Loc	03/15/2011 03:00							RIG WAS RUNNING CASING UPON HES ARRIVAL TO LOCATION
Assessment Of Location Safety Meeting	03/15/2011 07:20							WITH ALL HES PERSONNEL
Other	03/15/2011 07:30							SPOT EQUIPMENT
Pre-Rig Up Safety Meeting	03/15/2011 07:50							WITH ALL HES PERSONNEL
Rig-Up Equipment	03/15/2011 08:00							
Pre-Job Safety Meeting	03/15/2011 09:20							WITH ALL PERSONNEL ON LOCATION
Start Job	03/15/2011 09:47							
Other	03/15/2011 09:49		2	2			132.0	FILL LINES
Test Lines	03/15/2011 09:51							TEST LINES TO 3060 PSI. PRESSURE HOLDING
Pump Spacer 1	03/15/2011 09:55		6	20			330.0	FRESH WATER
Pump Spacer 2	03/15/2011 09:59		6	20			248.0	GEL WATER
Pump Spacer 1	03/15/2011 10:02		6	20			285.0	FRESH WATER

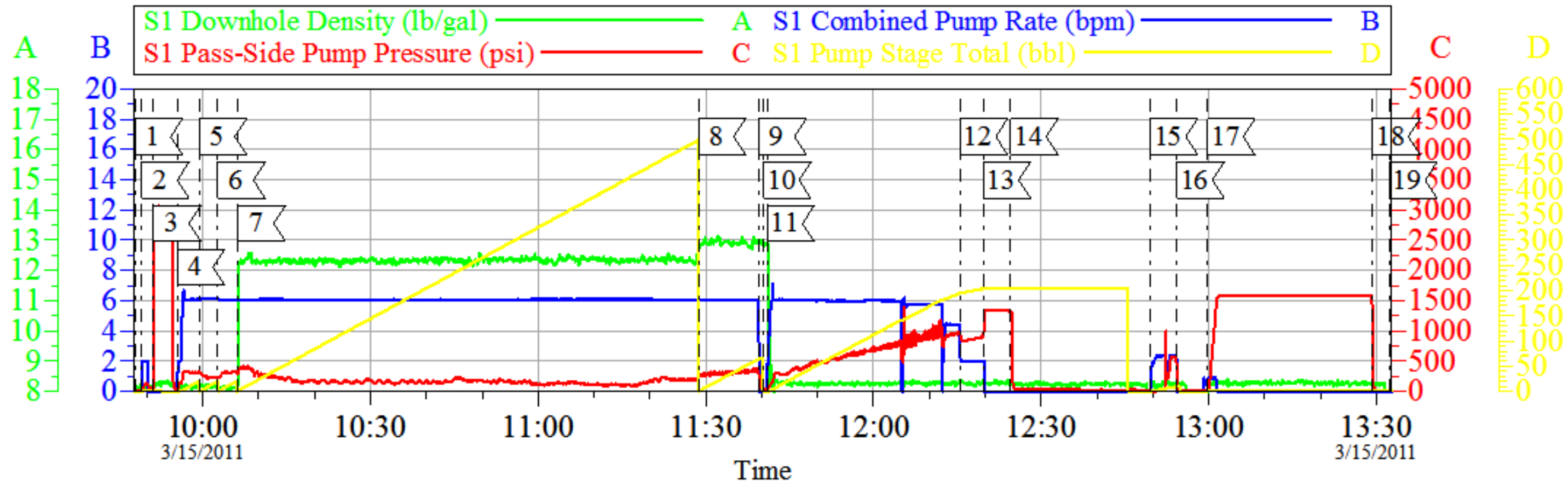
Activity Description	Date/Time	Cht #	Rate bbl/min	Volume bbl		Pressure psig		Comments
				Stage	Total	Tubing	Casing	
Pump Lead Cement	03/15/2011 10:06		6	421.2			170.0	1015 SKS AT 12.3 PPG, 2.33 FT3/SK, 12.62 GAL/SK WITH 7 BOXES OF TUFF FIBER IN LEAD CEMENT.
Pump Tail Cement	03/15/2011 11:28		6	66.7			300.0	181 SKS AT 12.8 PPG, 2.02 FT3/SK, 10.67 GAL/SK
Shutdown	03/15/2011 11:39							
Drop Top Plug	03/15/2011 11:40							PLUG LAUNCHED
Pump Displacement	03/15/2011 11:40		6	195.7			1020	FRESH WATER
Slow Rate	03/15/2011 12:15		2	10			900.0	SLOW RATE 10 BBLS PRIOR TO CALCULATED DISPLACEMENT
Bump Plug	03/15/2011 12:19		2		205.7		1350	PLUG BUMPED
Check Floats	03/15/2011 12:24							FLOATS HOLDING
Pump Water	03/15/2011 12:49		2.5	10			1000	PUMP 10 BBLS SUGAR WATER DOWN PARASITE STRING
Shutdown	03/15/2011 12:54							
Pressure Test	03/15/2011 12:59						1580	PRESSURE TEST CASING TO 1580 PSI FOR 30 MINUTES AS PER COMPANY REP. PRESSURE HELD.
Release Casing Pressure	03/15/2011 13:29							
End Job	03/15/2011 13:32							PIPE WAS STATIC THROUGHOUT JOB. LOST CIRCULATION DURING LEAD CEMENT FOR APPROX 100 BBLS. GOOD CIRCULATION THE REST OF THE JOB. HES RETURNED 150 BBLS OF CEMENT TO SURFACE.
Pre-Rig Down Safety Meeting	03/15/2011 13:40							WITH ALL HES PERSONNEL
Rig-Down Equipment	03/15/2011 13:50							

Cementing Job Log

Activity Description	Date/Time	Cht #	Rate bbl/ min	Volume bbl		Pressure psig		Comments
				Stage	Total	Tubing	Casing	
Pre-Convoy Safety Meeting	03/15/2011 15:50							WITH ALL HES PERSONNEL
Crew Leave Location	03/15/2011 16:00							
Comment	03/15/2011 16:01							THANK YOU FOR USING HALLIBURTON CEMENT DEPARTMENT. JEREMY YOUNG AND CREW.
Comment	03/15/2011 16:02							CREW BROUGHT UP 350 SKS OF TOPOUT CEMENT BUT DID NOT USE ANY. LEFT LOADED TRUCK ON LOCATION. TOPOUT CEMENT WAS CHARGED TO THIS WELL

OXY

CC 697-09-17A, 9 5/8 SURFACE



1	START JOB	09:47:53	2	FILL LINES	09:49:04
3	TEST LINES	09:51:11	4	PUMP H2O SPACER 1	09:55:27
5	PUMP GEL SPACER	09:59:23	6	PUMP H2O SPACER 2	10:02:41
7	PUMP LEAD CEMENT	10:06:20	8	PUMP TAIL CEMENT	11:28:39
9	SHUTDOWN	11:39:30	10	DROP TOP PLUG	11:40:20
11	PUMP DISPLACEMENT	11:40:57	12	SLOW RATE	12:15:33
13	BUMP PLUG	12:19:39	14	CHECK FLOATS	12:24:33
15	PUMP DOWN PARASITE STRING	12:49:33	16	SHUTDOWN	12:54:16
17	PRESSURE TEST CASING	12:59:47	18	RELEASE PRESSURE	13:29:18
19	END JOB	13:32:22			

Customer: OXY
Well Description: CC 697-09-17A
Customer Rep: VICTOR BENEVIDES

Job Date: 15-Mar-2011
Job Type: SURFACE
Service Supervisor: JEREMY YOUNG

Sales Order #: 7842144
ADC Used: YES
Pump #/Operator: 4/DUSTIN SMITH

OptiCem v6.4.9
15-Mar-11 13:57