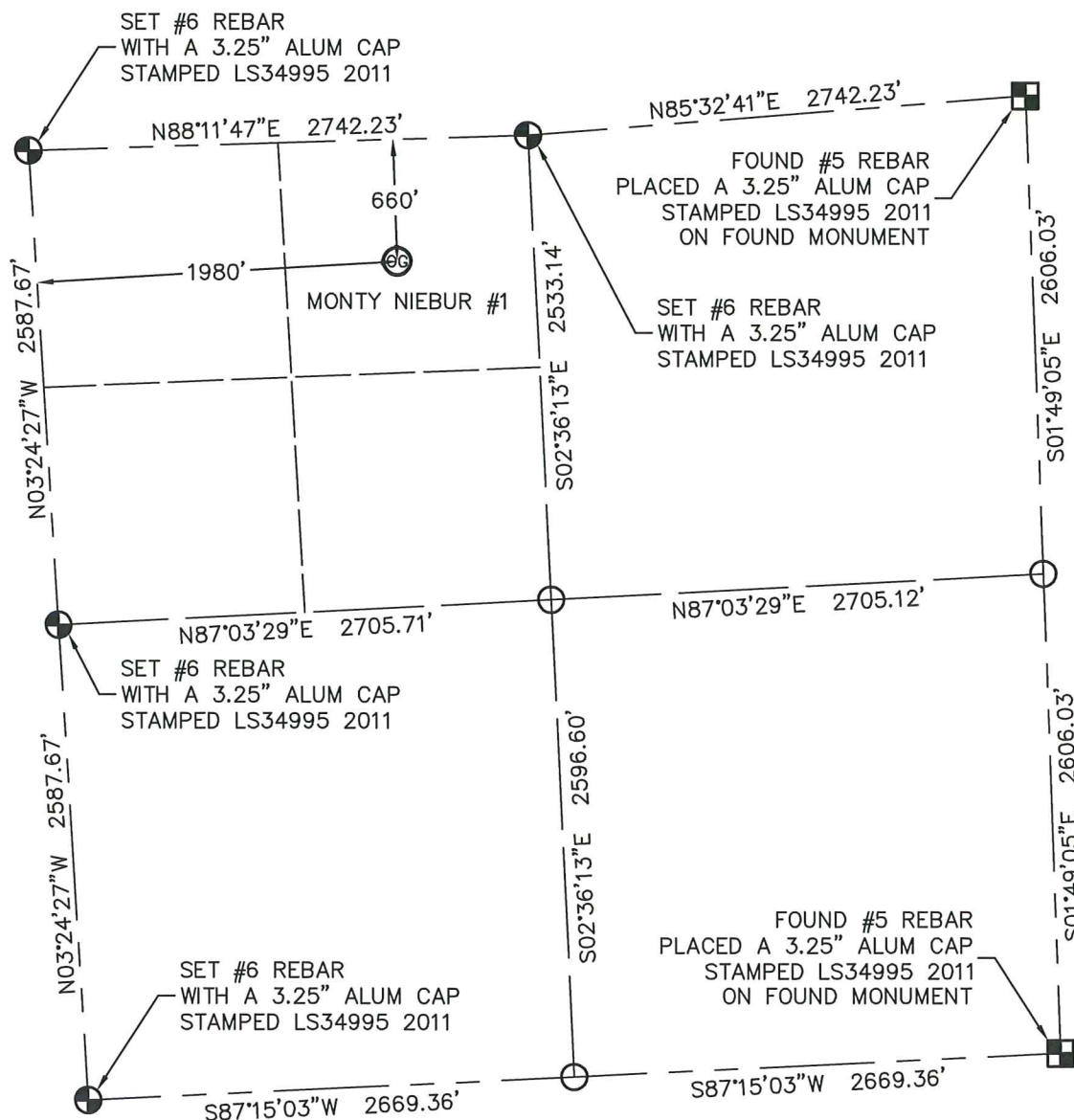


WELL LOCATION CERTIFICATE

MONTY NIEBUR #1

SECTION: 23
TOWNSHIP: 2S
RANGE: 51W

THIS MAP DOES NOT REPRESENT A BOUNDARY SURVEY



In accordance with a request from RENEE SAVIO with ST. CROIX OPERATING, INC.
King Surveyors Inc. has determined the surface location of the MONTY NIEBUR #1 to be 660' from the NORTH
line and 1980' from the WEST line, as measured at right angles, from the section lines of Section 23,
Township 2 South, Range 51 West of the Sixth Principal Meridian, County of Washington, State of Colorado.

I hereby state that this Well Location Certificate was prepared by me, or under my direct supervision,
that the fieldwork was completed on 2-22-2011, for and on behalf of ST. CROIX OPERATING, INC.
That this is not a Land Survey Plat or an Improvement Survey Plat, and that it is not to be relied
upon for establishment of fence, building, or other future improvement lines.

NOTE:

- 1) Bearings shown are Grid Bearings of the Colorado State Plane Coordinate System, North Zone, North American Datum 1983/2007. The lineal dimensions as contained herein are based upon the "U.S. Survey Foot."
- 2) Ground elevations are based on an observed GPS elevation (NAVD 1988 DATUM).
- 3) NEAREST EXISTING WELL: NO EXISTING WELLS IN THIS SECTION
- 4) IMPROVEMENTS: See LOCATION DRAWING for all visible improvements within 400' of disturbed area.
- 5) SURFACE USE: NATIVE GRASS
- 6) FIELD OPERATOR: RON EDWARDS

LEGEND

- = FOUND ALIQUOT MONUMENT AS DESCRIBED
 = CALCULATED POSITION
 = SET ALIQUOT MONUMENT AS DESCRIBED

NOTE:

According to Colorado law, you must commence any legal action based upon any defect in this W.L.C. within three years after you discover such defect. In no event, may any action based upon any defect in this survey be commenced more than ten years after the date of the certificate shown hereon. (13-80-105 C.R.S.)

SURFACE LOCATION
LATITUDE: 39.87154°N
LONGITUDE: 103.06051°W
PDOP: 1.7
ELEV: 4579'
1/4,1/4: NE1/4 NW1/4
NEAREST PROPERTY LINE: 660' NORTH

Michael Chad Dilka - On Behalf Of King Surveyors, Inc.
 Colorado Licensed Professional Land Surveyor #38106
 PROJECT#: 2011049