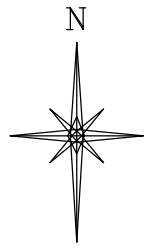
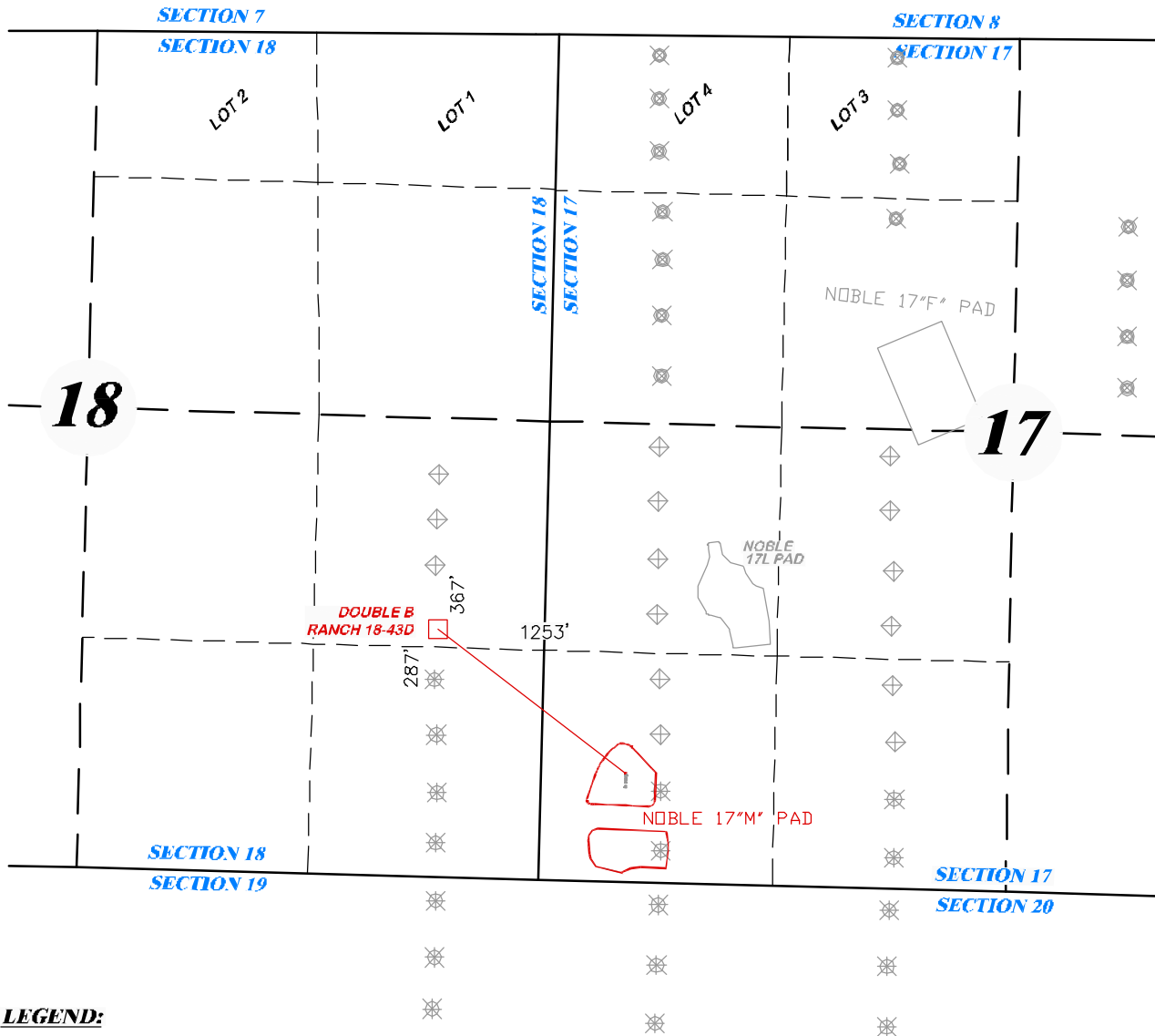


T7S

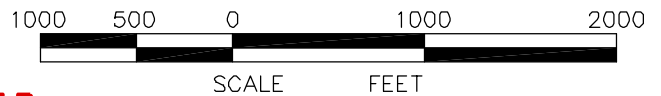


SCALE: 1" = 1000'




LEGEND:

- ✖ PROPOSED BOTTOM HOLE LOCATION FOR 17M PAD
- ✖ PROPOSED BOTTOM HOLE LOCATION FOR 17F PAD
- ⬠ PROPOSED BOTTOM HOLE LOCATION FOR 17L PAD
- PROPOSED BOTTOM HOLE DOUBLE B RANCH 18-43D



17M PAD

 <p>DRG RIFFIN & ASSOCIATES, INC. (307) 362-5028 1414 ELK ST., ROCK SPRINGS, WY 82901</p>		<p>MULTI-WELL PLAN</p> <p>NOBLE ENERGY, INC. DOUBLE B RANCH 18-43D 17M PAD</p>	
DRAWN: 5/17/11 - RCR	SCALE: 1" = 1000'	<p>PAD LOCATION IN THE SW 1/4 OF SW 1/4 OF SECTION 17, T. 7 S., R. 94 W., 6th P.M. GARFIELD COUNTY, COLORADO</p>	
REVISED: N/A	JOB No. 15454		
	EXHIBIT 1C		