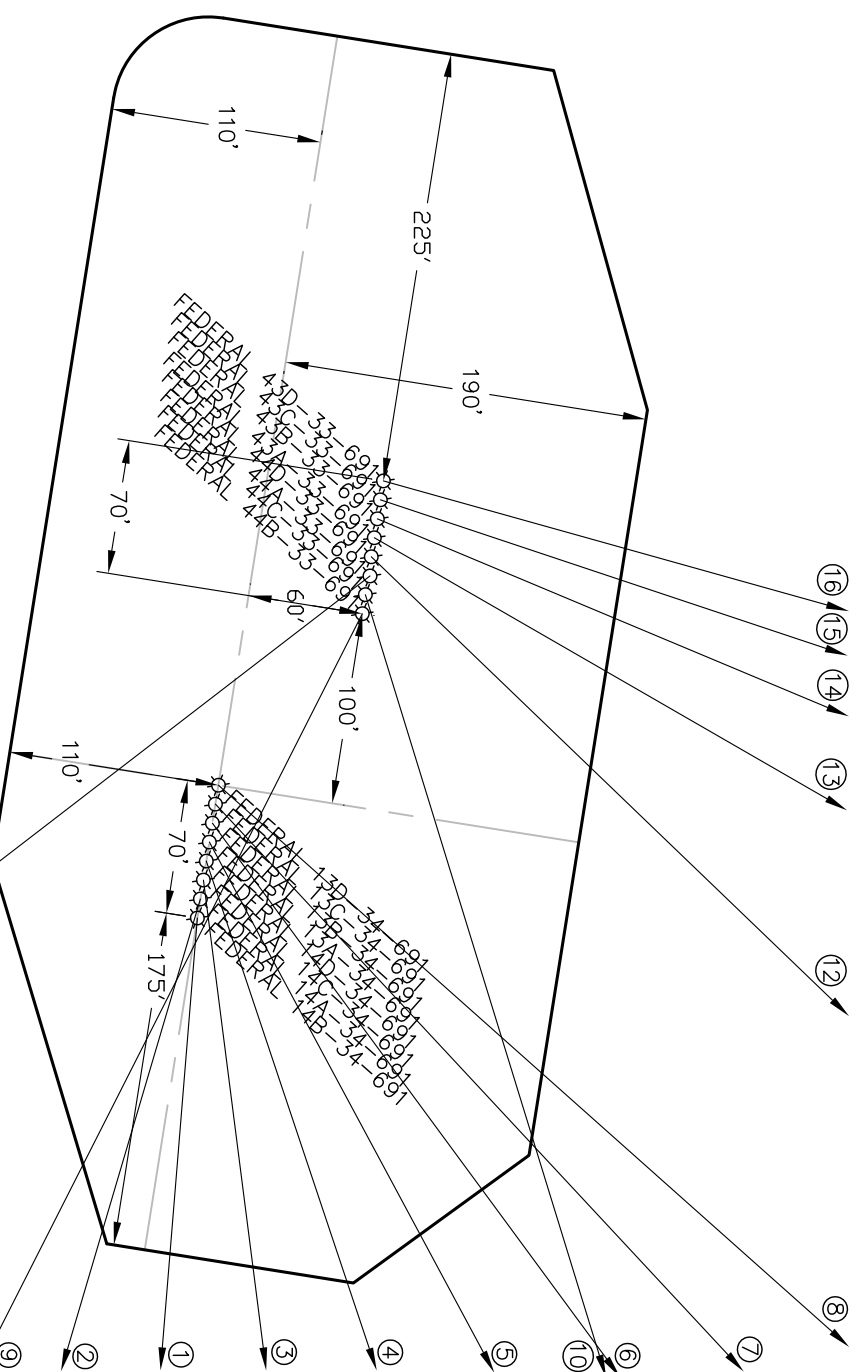
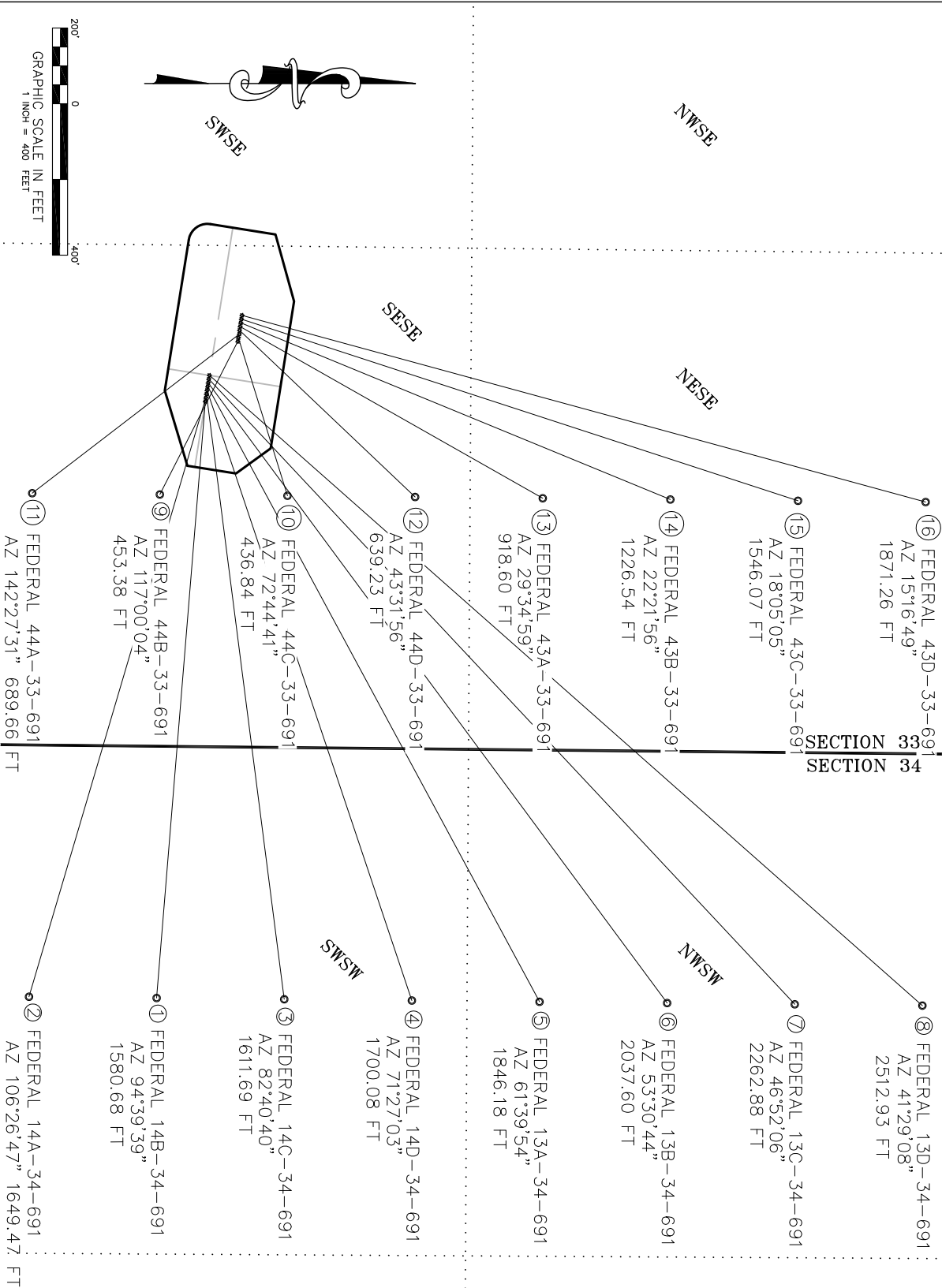


WELL INTERFERENCE EXHIBIT


MDP 26

NAD 83 COLORADO CENTRAL ZONE  
SURFACE HOLE LOCATIONS



	SURFACE HOLE LOCATIONS						BOTTOM HOLE LOCATIONS						
	WELL NAME	FSL	FEL	NORTHING	EASTING	LATITUDE	LONGITUDE	FSL	FEWL	NORTHING	EASTING	LATITUDE	LONGITUDE
1	FED 14B-34-691	620	912	1605941.1	2420659.5	39.479113	-107.552622	502	665 W	1605812.7	2422234.9	39.478858	-107.547032
2	FED 14A-34-691	622	922	1605942.7	2420649.6	39.479117	-107.552657	165	665 W	1605475.7	2422231.6	39.477933	-107.547017
3	FED 14C-34-691	624	931	1605944.3	2420639.7	39.479120	-107.552692	839	665 W	1606149.7	2422238.3	39.479783	-107.547047
4	FED 14D-34-691	625	941	1605945.9	2420629.8	39.479124	-107.552727	1176	665 W	1606486.7	2422241.6	39.480708	-107.547062
5	FED 13A-34-691	627	951	1605947.4	2420620.0	39.479128	-107.552762	1513	665 W	1606823.7	2422244.9	39.481633	-107.547077
6	FED 13B-34-691	628	961	1605949.0	2420610.1	39.479131	-107.552797	1850	665 W	1607160.6	2422248.3	39.482559	-107.547092
7	FED 13C-34-691	630	971	1605950.6	2420600.2	39.479135	-107.552832	2187	665 W	1607497.6	2422251.6	39.483484	-107.547107
8	FED 13D-34-691	631	981	1605952.1	2420590.3	39.479139	-107.552868	2524	665 W	1607834.6	2422255.0	39.484409	-107.547122
9	FED 44B-33-691	705	1071	1606027.1	2420501.0	39.479339	-107.553190	502	665 E	1605821.2	2420904.9	39.478799	-107.551743
10	FED 44C-33-691	707	1081	1606028.6	2420491.1	39.479343	-107.553225	839	665 E	1606158.2	2420908.3	39.479724	-107.551758
11	FED 44A-33-691	709	1091	1606031.1	2420481.4	39.479349	-107.553260	165	665 E	1605484.2	2420901.6	39.477874	-107.551728
12	FED 44D-33-691	710	1101	1606031.8	2420471.3	39.479350	-107.553295	1176	665 E	1606495.2	2420911.6	39.480649	-107.551773
13	FED 43A-33-691	711	1111	1606033.3	2420461.5	39.479354	-107.553331	1513	665 E	1606832.2	2420915.0	39.481574	-107.551788
14	FED 43B-33-691	713	1120	1606034.9	2420451.6	39.479357	-107.553366	1850	665 E	1607169.2	2420918.3	39.482500	-107.551803
15	FED 43C-33-691	715	1130	1606036.5	2420441.7	39.479361	-107.553401	2187	665 E	1607506.1	2420921.6	39.483425	-107.551818
16	FED 43D-33-691	716	1140	1606038.0	2420431.8	39.479365	-107.553436	2524	665 E	1607843.1	2420925.0	39.484350	-107.551834

\*NOTE: THE FINISHED PAD ELEVATION IS 6746.9'



ECLIPSE

surveying

111 E. THIRD ST., SUITE 208, RIFLE, CO 81650

(970) 625-3048

REV. DATE: 6/1/11


SCALE: 1" = 400'

DATE: 11/5/10

SHEET: 1 OF 1

PROJECT: SESE-33-691

DFT: TAB



Bill Barrett Corporation

SE/ASE/4, SECTION 33

T. 6 S., R. 91 W. of the 6th. P.M.

GARFIELD COUNTY, COLORADO