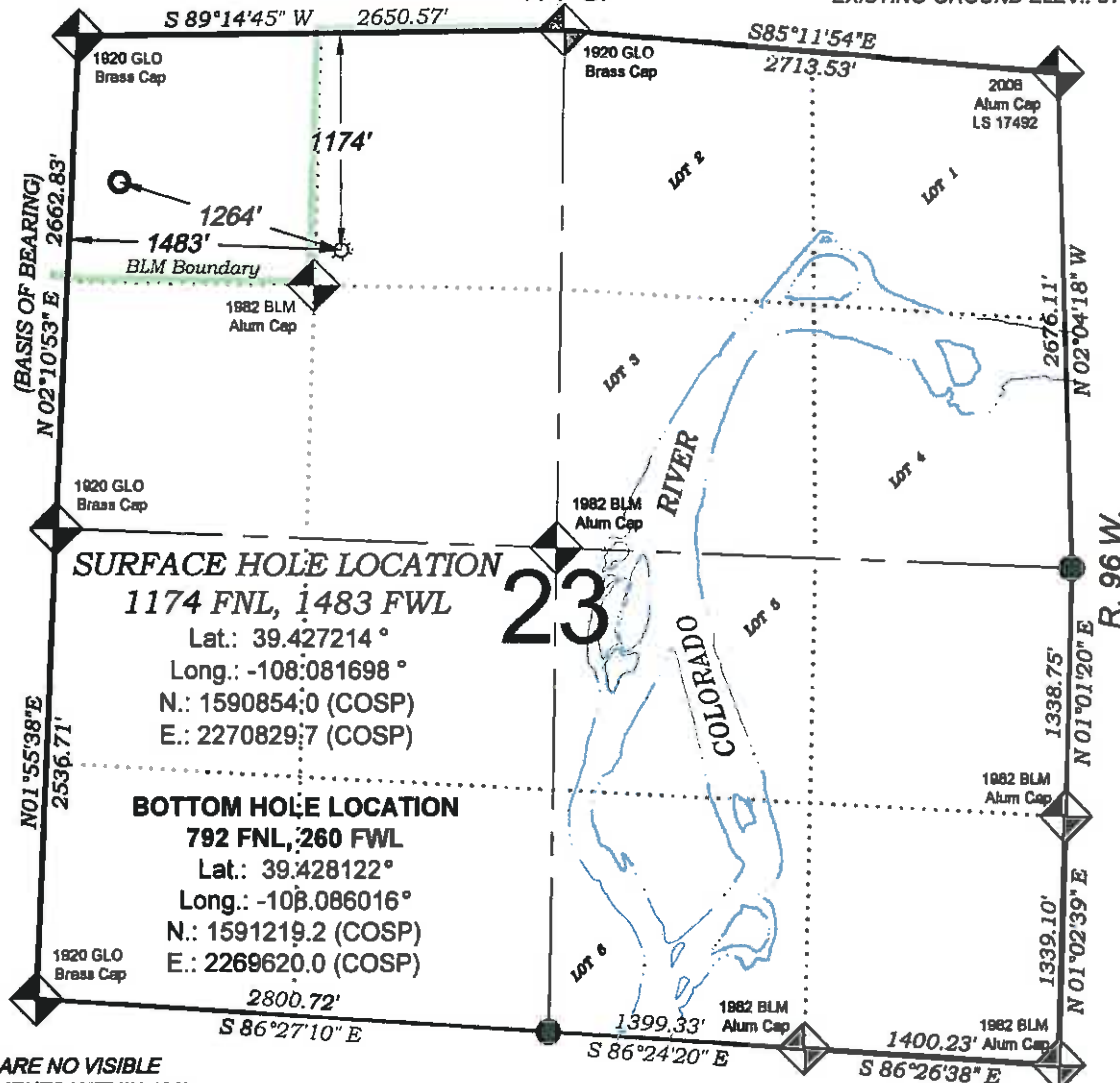


# Bosley SG 311-23

T. 7 S.

PROPOSED PAD ELEV.: 5133.4  
EXISTING GROUND ELEV.: 5133.5



## SURFACE HOLE LOCATION

1174 FNL, 1483 FWL

Lat.: 39.427214 °

Long.: -108.081698 °

N.: 1590854.0 (COSP)

E.: 2270829.7 (COSP)

## BOTTOM HOLE LOCATION

792 FNL, 260 FWL

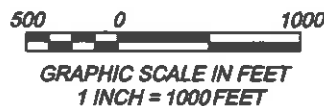
Lat.: 39.428122 °

Long.: -108.086016 °

N.: 1591219.2 (COSP)

E.: 2269620.0 (COSP)

THERE ARE NO VISIBLE  
IMPROVEMENTS WITHIN 400'  
OF THIS LOCATION



## - LEGEND -

FIELD LOCATED SECTION  
MONUMENTS AS DESCRIBED

FIELD SURVEYED  
WELL LOCATION

CALCULATED BOTTOM  
HOLE LOCATION

CALCULATED SECTION  
CORNER LOCATION

## SURVEYORS STATEMENT

I, MICHAEL J. LANGHORNE, A REGISTERED LAND SURVEYOR IN THE  
STATE OF COLORADO DO HEREBY CERTIFY THAT THE SURVEY SHOWN  
HEREON WAS PREPARED UNDER MY DIRECT SUPERVISION AND HAS  
BEEN STAKED ON THE GROUND AS SHOWN ON THE PLAT AND  
CHECKING THAT THIS MAP IS A TRUE REPRESENTATION THEREOF.

MICHAEL J. LANGHORNE, COLORADO REGISTRATION NO. 36572  
FOR AND ON BEHALF OF  
BOOKCLIFF SURVEY SERVICES, INC.

## REFERENCES

- 1) DEPENDENT RESURVEY & SUBDIVISION OF SECTIONS  
T. 7 S., R. 96 W., 6th P.M. (GLO PLAT)
- 2) U.S.G.S. QUAD: PARACHUTE, CO

## NOTES

- 1) ELEVATIONS BASED ON N.A.V.D. 1988 PUBLISHED COORDINATES.
- 2) LATITUDES AND LONGITUDES ARE BASE ON NAD 83,  
PUBLISHED COORDINATES
- 3) STATE PLANE COORDINATES ARE BASED ON COLORADO  
CENTRAL ZONE, U.S. SURVEY FEET.
- 4) ELEVATION MASK SET TO 15"
- 5) GPS OPERATOR J. KIRKPATRICK, OBSERVED A PDOP 1.6 ON  
SURVEY POINT NUMBER 102304.
- 6) SURFACE AND BOTTOM HOLE LOCATIONS ARE MEASURED 90°  
FROM SECTION LINES.

WELL LOCATION PLAT Prepared for:  
**Williams** Williams Production, RMT

NE1/4 NW1/4, SECTION 23  
T. 7 S., R. 96 W. of the 6th P.M.  
GARFIELD COUNTY, COLORADO

SURVEY DATE: 6/28/10

MAP DATE: 3/22/11

SCALE: 1" = 1000'

PLAT: 1 of 1

PROJECT: Williams

Lot East Third Street  
P.O. Box 1180  
Ph. (970) 825-1180  
Fax (970) 825-2773

**BOOKCLIFF**  
Survey Services, Inc.