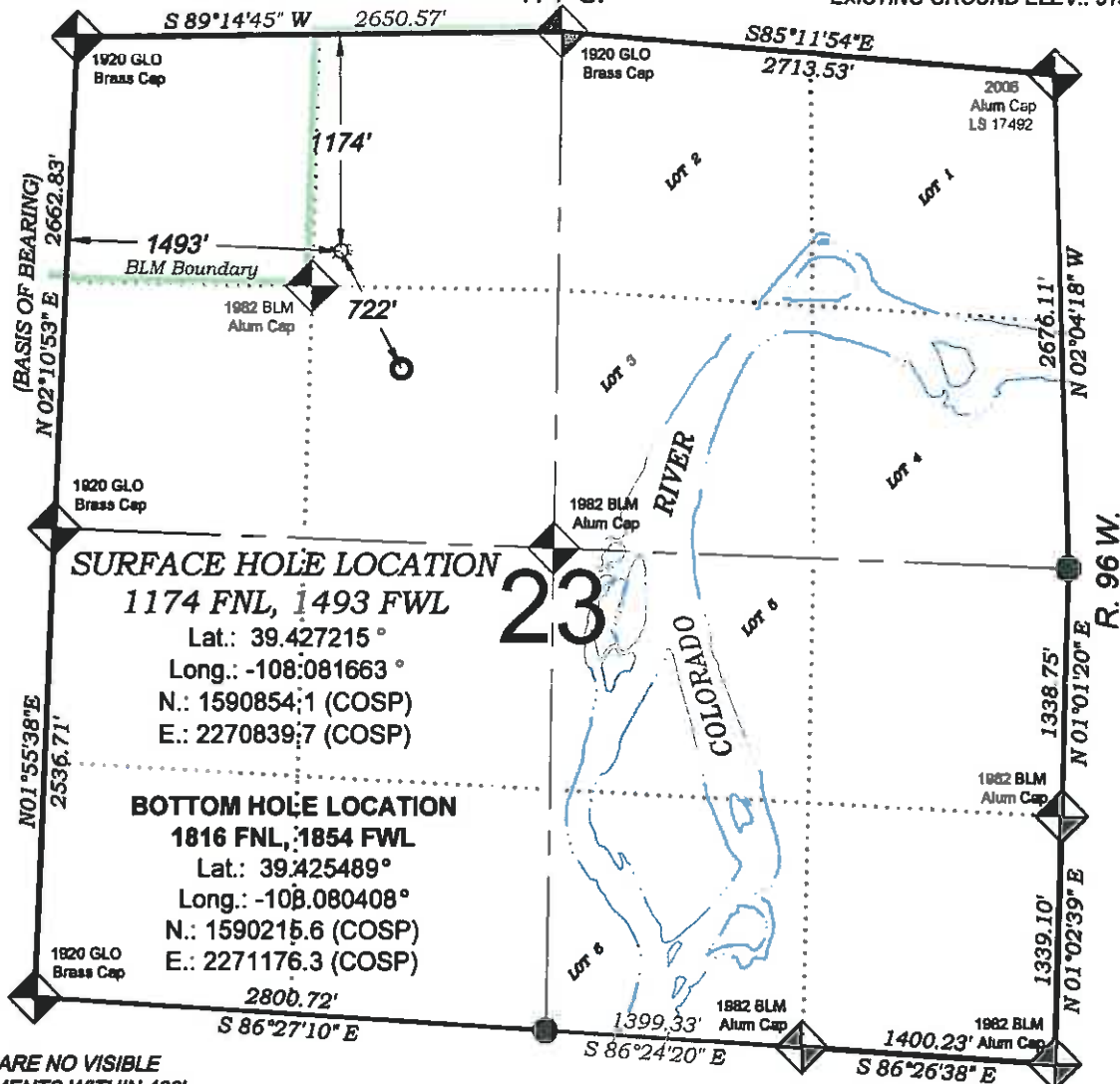


Bosley SG 22-23

T. 7 S.

PROPOSED PAD ELEV.: 5133.4
EXISTING GROUND ELEV.: 5133.5



THERE ARE NO VISIBLE IMPROVEMENTS WITHIN 400' OF THIS LOCATION

GRAPHIC SCALE IN FEET
1 INCH = 1000 FEET

SURVEYORS STATEMENT

I, MICHAEL J. LANGHORNE, A REGISTERED LAND SURVEYOR IN THE STATE OF COLORADO DO HEREBY CERTIFY THAT THE SURVEY SHOWN HEREON WAS PREPARED UNDER MY DIRECT SUPERVISION AND HAS BEEN STAKED ON THE GROUND AS SHOWN ON THE PLAT AND CHECKING THAT THIS MAP IS A TRUE REPRESENTATION THEREOF.

Michael Langhorne

MICHAEL J. LANGHORNE, COLORADO REGISTRATION NO. 36572
FOR AND ON BEHALF OF
BOOKCLIFF SURVEY SERVICES, INC.

REFERENCES

- 1) DEPENDENT RESURVEY & SUBDIVISION OF SECTIONS
T. 7 S., R. 96 W., 6th P.M. (GLO PLAT)
- 2) U.S.G.S. QUAD: PARACHUTE, CO

NOTES

- 1) ELEVATIONS BASED ON N.A.V.D. 1988 PUBLISHED COORDINATES.
- 2) LATITUDES AND LONGITUDES ARE BASE ON NAD 83, PUBLISHED COORDINATES
- 3) STATE PLANE COORDINATES ARE BASED ON COLORADO CENTRAL ZONE, U.S. SURVEY FEET.
- 4) ELEVATION MASK SET TO 15"
- 5) GPS OPERATOR J. KIRKPATRICK, OBSERVED A PDOP 1.6 ON SURVEY POINT NUMBER 102304.
- 6) SURFACE AND BOTTOM HOLE LOCATIONS ARE MEASURED 90° FROM SECTION LINES.

WELL LOCATION PLAT Prepared for:
Williams Williams Production, RMT

NE1/4 NW1/4, SECTION 23
T. 7 S., R. 96 W. of the 6th P.M.
GARFIELD COUNTY, COLORADO

101 East Third Street
Boulder, Colorado 80501
Ph: (303) 442-1330
Fax: (303) 442-2773

BOOKCLIFF
Survey Services, Inc.

SURVEY DATE: 6/28/10
MAP DATE: 3/22/11
SCALE: 1" = 1000'
PLAT: 1 of 1
PROJECT: Williams