
OXY GRAND JUNCTION EBUSINESS

CC 697-09-35A

Garfield County , Colorado

Cement Surface Casing

25-Apr-2011

Post Job Summary

The Road to Excellence Starts with Safety

Sold To #: 344034	Ship To #: 2825564	Quote #:	Sales Order #: 8119155
Customer: OXY GRAND JUNCTION EBUSINESS	Customer Rep: Silva, Marco		
Well Name: CC	Well #: 697-09-35A	API/UWI #:	
Field:	City (SAP): PARACHUTE	County/Parish: Garfield	State: Colorado
Contractor: H&P 330	Rig/Platform Name/Num: H&P 330		
Job Purpose: Cement Surface Casing			
Well Type: Development Well	Job Type: Cement Surface Casing		
Sales Person: DUNNING, DUSTIN	Srv Supervisor: MUHLESTEIN, RYAN	MBU ID Emp #:	453609

Job Personnel

HES Emp Name	Exp Hrs	Emp #	HES Emp Name	Exp Hrs	Emp #	HES Emp Name	Exp Hrs	Emp #
BROWN, TRAVIS A	18	396848	KEANE, JOHN Donovan	18	486519	MUHLESTEIN, RYAN Herrick	18	453609
ZUMWALT, ORVILLE Raymond	18	398157	BILL JAMISON	18	229155			

Equipment

HES Unit #	Distance-1 way	HES Unit #	Distance-1 way	HES Unit #	Distance-1 way	HES Unit #	Distance-1 way
10713294	60 mile	10856450	60 mile	10951244	60 mile	11021972	60 mile
11027039	60 mile	11360871	60 mile	11542767	60 mile	11259881	60 mile

Job Hours

Date	On Location Hours	Operating Hours	Date	On Location Hours	Operating Hours	Date	On Location Hours	Operating Hours
4/24/2011	9	4	4/25/11	6	6			

TOTAL Total is the sum of each column separately

Job

Formation Name	Top	Bottom	Called Out	Date	Time	Time Zone
Formation Depth (MD)			On Location	24 - Apr - 2011	05:00	MST
Form Type		BHST	Job Started	24 - Apr - 2011	15:00	MST
Job depth MD	2717. ft	Job Depth TVD	Job Started	24 - Apr - 2011	21:05	MST
Water Depth		Wk Ht Above Floor	Job Completed	24 - Apr - 2011	03:55	MST
Perforation Depth (MD)	From	To	Departed Loc	25 - Apr - 2011	06:00	MST

Well Data

Description	New / Used	Max pressure psig	Size in	ID in	Weight lbm/ft	Thread	Grade	Top MD ft	Bottom MD ft	Top TVD ft	Bottom TVD ft
OPEN HOLE SECTION				14.75				.	2717.	.	2717.
SURFACE CASING	Unknown		9.625	8.921	36.		J-55	.	2701.	.	2701.

Sales/Rental/3rd Party (HES)

Description	Qty	Qty uom	Depth	Supplier
R/A DENSOMETER W/CHART RECORDER,/JOB,ZI	1	JOB		
PORT. DATA ACQUIS. W/OPTICEM RT W/HES	1	EA		
ADC (AUTO DENSITY CTRL) SYS, /JOB,ZI	1	JOB		

Tools and Accessories

Type	Size	Qty	Make	Depth	Type	Size	Qty	Make	Depth	Type	Size	Qty	Make
Guide Shoe					Packer					Top Plug			
Float Shoe					Bridge Plug					Bottom Plug			
Float Collar					Retainer					SSR plug set			
Insert Float										Plug Container			
Stage Tool										Centralizers			

Miscellaneous Materials

Gelling Agt	Conc	Surfactant	Conc	Acid Type	Qty	Conc	%
Treatment Fld	Conc	Inhibitor	Conc	Sand Type	Size	Qty	

Fluid Data									
Stage/Plug #: 1									
Fluid #	Stage Type	Fluid Name	Qty	Qty uom	Mixing Density lbm/gal	Yield ft ³ /sk	Mix Fluid Gal/sk	Rate bbl/min	Total Mix Fluid Gal/sk
1	Water Spacer		20.00	bbl	8.33	.0	.0	4.0	
2	Gel Spacer		20.00	bbl	8.4	.0	.0	4.0	
3	Water Spacer		20.00	bbl	8.33	.0	.0	6.0	
4	EconoCemLead Cement	VERSACEM (TM) SYSTEM (452010)	1050.0	sacks	12.3	2.33	12.62	6.0	12.62
12.62 Gal		FRESH WATER							
5	Tail Cement	VERSACEM (TM) SYSTEM (452010)	170.0	sacks	12.8	2.07	10.67	6.5	10.67
10.67 Gal		FRESH WATER							
6	Displacement		205.00	bbl	8.4	.0	.0	7.0	
7	Topout Cement	HALCEM (TM) SYSTEM (452986)		sacks	12.5	1.97	10.96		10.96
10.96 Gal		FRESH WATER							
Calculated Values		Pressures		Volumes					
Displacement	204.7	Shut In: Instant		Lost Returns	763	Cement Slurry	498.4	Pad	
Top Of Cement	SURFACE	5 Min		Cement Returns	5	Actual Displacement	204.7	Treatment	
Frac Gradient		15 Min		Spacers	60	Load and Breakdown		Total Job	763
Rates									
Circulating		Mixing	6	Displacement	7	Avg. Job	6.5		
Cement Left In Pipe	Amount	52.5 ft	Reason	Shoe Joint					
Frac Ring # 1 @	ID	Frac ring # 2 @	ID	Frac Ring # 3 @	ID	Frac Ring # 4 @	ID		
The Information Stated Herein Is Correct				Customer Representative Signature					

The Road to Excellence Starts with Safety

Sold To #: 344034	Ship To #: 2825564	Quote #:	Sales Order #: 8119155
Customer: OXY GRAND JUNCTION EBUSINESS		Customer Rep: Silva, Marco	
Well Name: CC	Well #: 697-09-35A	API/UWI #:	
Field:	City (SAP): PARACHUTE	County/Parish: Garfield	State: Colorado
Legal Description:			
Lat: N 0 deg. OR N 0 deg. 0 min. 0 secs.		Long: E 0 deg. OR E 0 deg. 0 min. 0 secs.	
Contractor: H&P 330		Rig/Platform Name/Num: H&P 330	
Job Purpose: Cement Surface Casing			Ticket Amount:
Well Type: Development Well		Job Type: Cement Surface Casing	
Sales Person: DUNNING, DUSTIN		Srvc Supervisor: MUHLESTEIN, RYAN	MBU ID Emp #: 453609

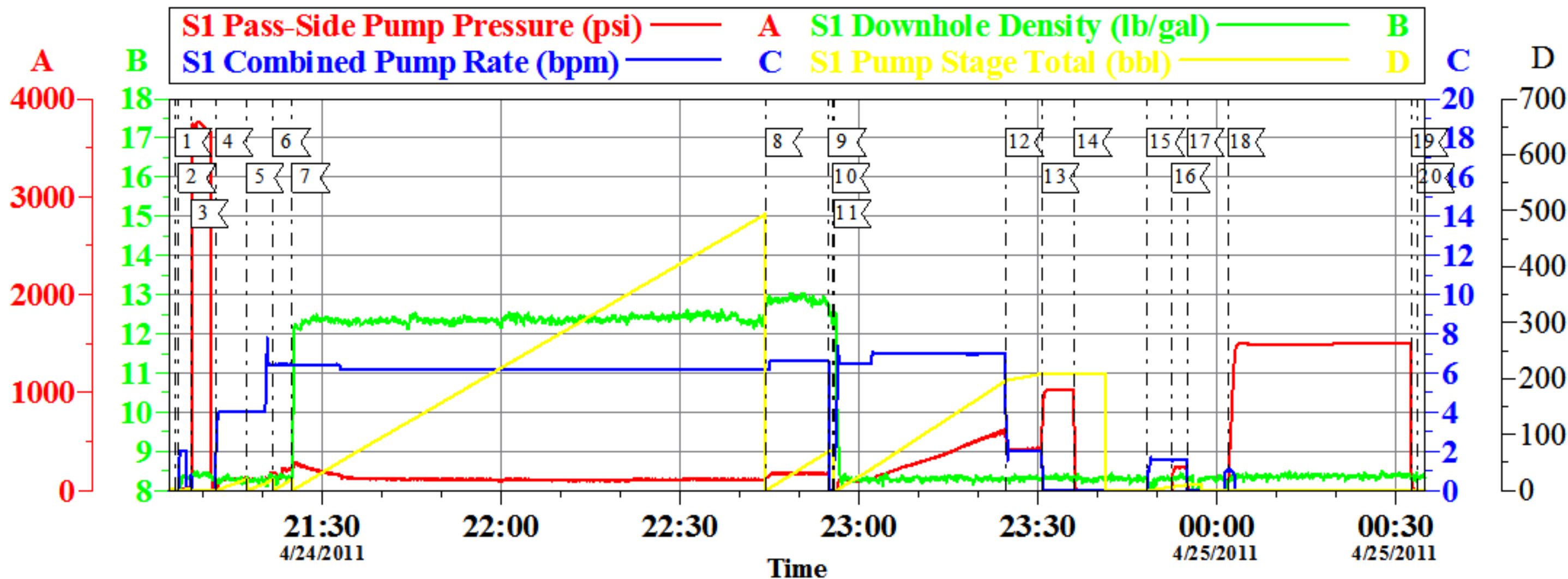
Activity Description	Date/Time	Cht #	Rate bbl/min	Volume bbl		Pressure psig		Comments
				Stage	Total	Tubing	Casing	
Call Out	04/24/2011 05:00							
Pre-Convoy Safety Meeting	04/24/2011 07:00							ALL HES EE'S
Arrive At Loc	04/24/2011 15:00							RIG STILL RUNNING
Pre-Rig Up Safety Meeting	04/24/2011 15:30							ALL HES EE'S
Rig-Up Equipment	04/24/2011 16:00							1 HT 400 PUMP, 2 BULK STORAGE BINS, 1 F-450 PICK-UP, 1 PLUG CONTAINER
Pre-Job Safety Meeting	04/24/2011 20:45							ALL HES EE'S, RIG CREW AND CO REP
Start Job	04/24/2011 21:05							TD-2717' TP-2701' SJ-52.5' CASING 9 5/8" 36# J-55 HOLE 14 3/4" MUD REPORT 9.2 PPG, PV 17 YP 16, RIG CIRCULATE 30 MINS PRIOR TO CMTJOB
Pump Water	04/24/2011 21:06		2	2			72.0	FRESH H2O TO FILL LINES
Test Lines	04/24/2011 21:08						3780.0	HELD PSI FOR 2 MIN, NO LEAKS
Pump Spacer 1	04/24/2011 21:12		4	20			160.0	FRESH H2O
Pump Spacer 2	04/24/2011 21:17		4	20			200.0	LGC-36 GEL SPACER 5 GAL PER 20 BBLs
Pump Spacer 1	04/24/2011 21:21		6	20			231.0	FRESH H2O
Pump Lead Cement	04/24/2011 21:24		6	435.7			290.0	1050 SKS 12.3 PPG 2.33 FT3/SK 12.62 GAL/SK
Pump Tail Cement	04/24/2011 22:44		6.5	62.7			180.0	170 SKS 12.8 PPG 2.07 FT3/SK 10.67 GAL/SK

Activity Description	Date/Time	Cht #	Rate bbl/ min	Volume bbl		Pressure psig		Comments
				Stage	Total	Tubing	Casing	
Shutdown	04/24/2011 22:55							
Drop Top Plug	04/24/2011 22:55							VERIFY PLUG LAUNCHED
Pump Displacement	04/24/2011 22:55		7	204.7			615.0	FRESH H2O DISPLACEMENT, NO RETURNS, 0 CEMENT TO SURFACE
Slow Rate	04/24/2011 23:24		2	194			450.0	
Bump Plug	04/24/2011 23:30		2	204.7			1080. 0	PLUG BUMPED AT 480 PSI
Check Floats	04/24/2011 23:36							FLOATS HELD, 1 BBL BACK TO PUMP TRUCK
Pump Water	04/24/2011 23:48							PUMP SUGAR WATER THRU PARASITE LINE
Other	04/24/2011 23:52		1.5	10			250.0	CIRCULATED PARASITE AT 250 PSI, FLOW NOTED TO SURFACE AT 6 BBLS AWAY
Shutdown	04/24/2011 23:55							NO RETURNS THROUGH OUT JOB, 763 BBLS LOST RETURNS
Pressure Test	04/25/2011 00:02						1500. 0	PRESSURE TEST CASING PER CO REP REQUEST, HELD PRESSURE 15 MINS
Release Casing Pressure	04/25/2011 00:32							
End Job	04/25/2011 00:33							NO TUFF FIBER OR DERRICK CHRG, 3 ADD HRS CHARGED 50 LBS SUGAR USED
Start Job	04/25/2011 01:10							
Pump Cement	04/25/2011 01:11		4	20			52.0	57 SKS 12.5 PPG 1.97 FT3/SK 10.96 GAL/SK, 3 BBLS CMT TO SURFACE
End Job	04/25/2011 01:30							
Shutdown	04/25/2011 01:30							

Activity Description	Date/Time	Cht #	Rate bbl/ min	Volume bbl		Pressure psig		Comments
				Stage	Total	Tubing	Casing	
Start Job	04/25/2011 03:52							
Pump Cement	04/25/2011 03:52		2	6			60.0	17 SKS 12.5 PPG 1.97 FT3/SK 10.96 GAL/SK, 2 BBLS TO SURFACE
Shutdown	04/25/2011 03:55							
End Job	04/25/2011 03:55							350 SKS TOP OUT CMT ADD TO TICKET
Pre-Rig Down Safety Meeting	04/25/2011 04:00							ALL HES EE'S
Rig-Down Equipment	04/25/2011 04:15							
Pre-Convoy Safety Meeting	04/25/2011 05:30							ALL HES EE'S
Crew Leave Location	04/25/2011 06:00							THANKS FOR USING HALLIBURTON CEMENT, RYAN MUHLESTEIN AND CREW

OXY

CC 697-09-35A 9 5/8" SURFACE CASING



Local Event Log

1	START JOB	4/24/2011 21:05:16	2	FILL LINES	4/24/2011 21:05:55
3	TEST LINES	4/24/2011 21:08:00	4	PUMP H2O SPACER	4/24/2011 21:12:08
5	PUMP GEL SPACER	4/24/2011 21:17:19	6	PUMP H2O SPACER	4/24/2011 21:21:43
7	PUMP LEAD CMT	4/24/2011 21:24:59	8	PUMP TAIL CMT	4/24/2011 22:44:21
9	SHUT DOWN	4/24/2011 22:55:01	10	DROP PLUG	4/24/2011 22:55:39
11	PUMP DISPLACEMENT	4/24/2011 22:55:51	12	SLOW RATE	4/24/2011 23:24:46
13	BUMP PLUG	4/24/2011 23:30:43	14	CHECK FLOATS	4/24/2011 23:36:11
15	PUMP H2O ON PARASITE	4/24/2011 23:48:25	16	CLEAR PARASITE	4/24/2011 23:52:37
17	SHUT DOWN	4/24/2011 23:55:05	18	PRESSURE TEST CASING	4/25/2011 00:01:54
19	RELEASE PRESSURE	4/25/2011 00:32:41	20	END JOB	4/25/2011 00:33:46

Customer: OXY
Well Description: CC 697
Customer Rep: MARCO SILVA

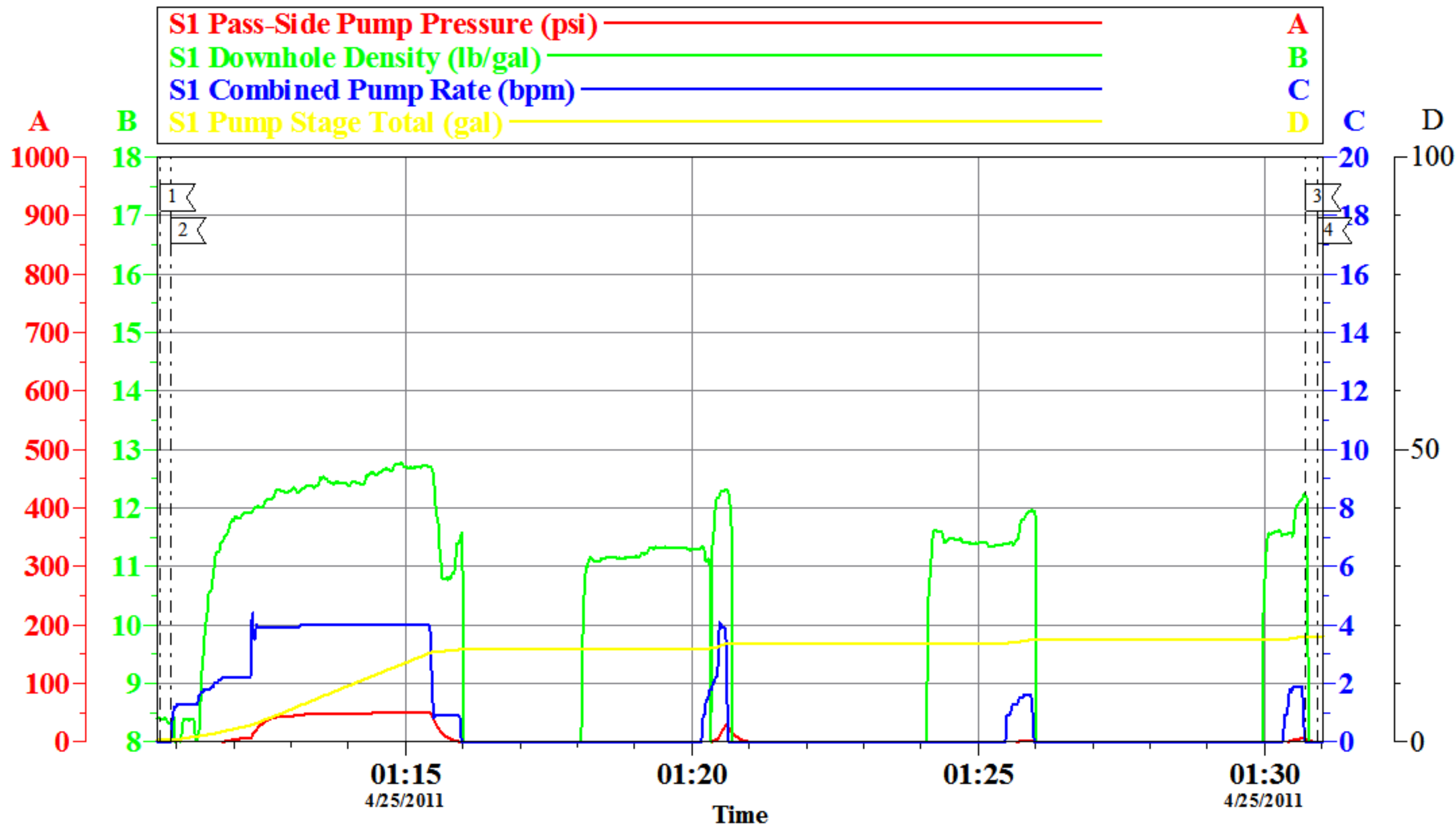
Job Date: 24-Apr-2011
Job type: SURFACE
Service Supervisor: RYAN MUHLESTEIN

Sales Order #: 8119155
ADC Used: YES
Operator/ Pump: TRAVIS BROWN/ ELITE 1

OptiCem v6.4.6
25-Apr-11 03:31

OXY

CC 697-09-35A TOP OUT # 1

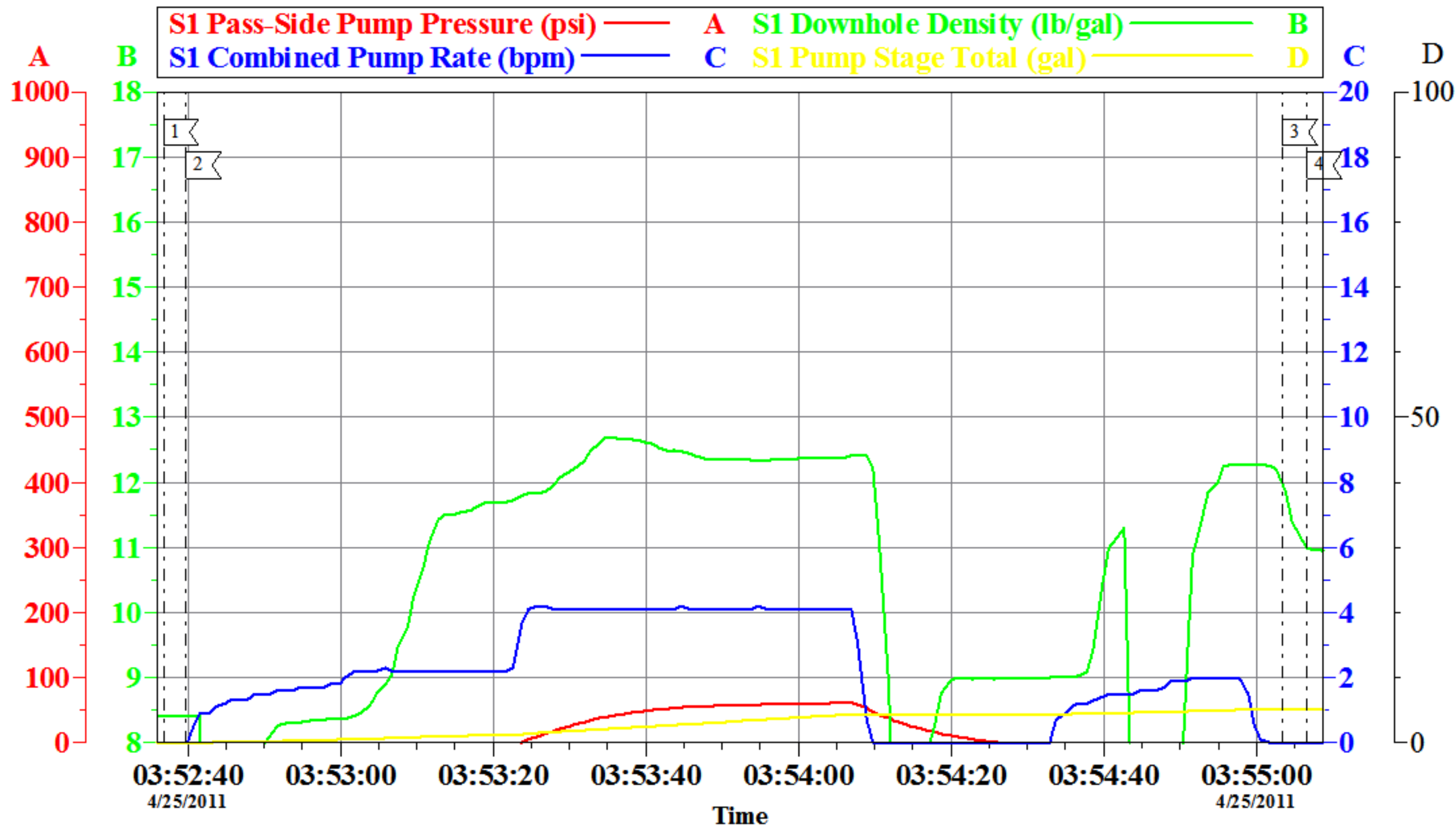


Local Event Log			
1	START JOB	01:10:43	2 PUMP CEMENT 01:10:55
3	SHUT DOWN	01:30:43	4 END JOB 01:30:55

Customer: OXY	Job Date: 24-Apr-2011	Sales Order #: 8119155
Well Description: CC 697-09-35A	Job type: TOPO OUT	ADC Used: YES
Customer Rep: MARCO SILVA	Service Supervisor: RYAN MUHLESTEIN	Operator/ Pump: TRAVIS BROWN/ ELITE 1

OXY

CC 697-09-35A TOP OUT # 2



Local Event Log			
1	START JOB	03:52:37	2 PUMP CEMENT 03:52:40
3	SHUT DOWN	03:55:03	4 END JOB 03:55:07

Customer: OXY
Well Description: CC 697-09-35A
Customer Rep: MARCO SILVA

Job Date: 25-Apr-2011
Job type: TOP OUT
Service Supervisor: RYAN MUHLESTEIN

Sales Order #: 8119155
ADC Used: YES
Operator/ Pump: TRAVIS BROWN/ ELITE 1

OptiCem v6.4.6
25-Apr-11 04:10