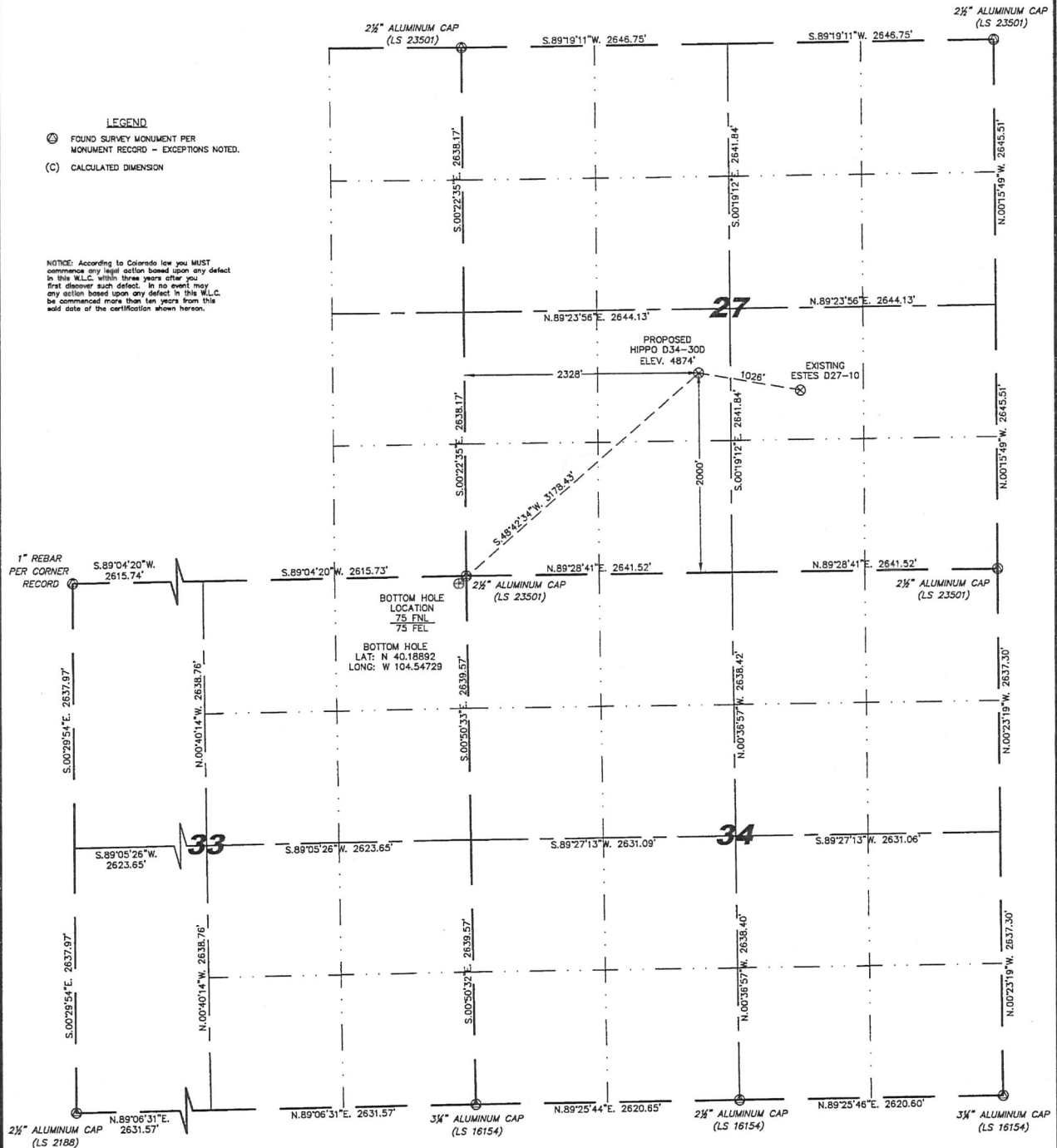


SECTION 27, 33 & 34
TOWNSHIP 3 NORTH
RANGE 64 WEST

WELL LOCATION CERTIFICATE
THIS MAP DOES NOT REPRESENT A BOUNDARY SURVEY

- LEGEND**
- ⊙ FOUND SURVEY MONUMENT PER MONUMENT RECORD - EXCEPTIONS NOTED.
- (C) CALCULATED DIMENSION

NOTICE: According to Colorado law you MUST commence any legal action based upon any defect in this W.L.C. within three years after you first discover such defect. In no event may any action based upon any defect in this W.L.C. be commenced more than ten years from this date of the certification shown herein.



IN ACCORDANCE WITH A REQUEST FROM BRIAN D. ROSE - NOBLE ENERGY INC. STELL SURVEYING SERVICES, LLC HAS DETERMINED THE LOCATION OF THE HIPPO D34-300 WELL TO BE 2000' FSL 2338' FSL AS MEASURED AT NINETY (90) DEGREES FROM THE SECTION LINES, SECTION 27, TOWNSHIP 3 NORTH, RANGE 64 WEST, 6TH PRINCIPLE MERIDIAN, WELD COUNTY, COLORADO.

I HEREBY CERTIFY THAT THIS WELL LOCATION CERTIFICATE WAS PREPARED BY ME, OR UNDER MY DIRECT SUPERVISION, THAT THE FIELD WORK WAS COMPLETED ON 03/11/2011, FOR AND ON BEHALF OF NOBLE ENERGY INC. THAT IT IS NOT A LAND SURVEY PLAT OR AN IMPROVEMENT SURVEY PLAT, AND THAT IT IS NOT TO BE RELIED UPON FOR ESTABLISHMENT OF FENCE, BUILDING, OR OTHER FUTURE IMPROVEMENT LINES.

LATITUDE & LONGITUDE (NAD 83 SURFACE HOLE):

LATITUDE: N 40.19461°
LONGITUDE: W 104.53866°
PDOP: 2.2
QUARTER-QUARTER: NE/4SW/4 SEC 27
NEAREST PROPERTY LINE: 2000' SOUTH

NOTES:

- 1) BASIS OF BEARINGS FOR THIS MAP ARE BASED UPON GPS OBSERVATIONS MADE ON 03/09/2011 BETWEEN MONUMENTS LOCATED AT THE SOUTHEAST SECTION CORNER AND THE NORTHEAST SECTION CORNER OF SAID SECTION AND WITH ALL BEARINGS SHOWN HEREON RELATIVE THERETO.
- 2) COORDINATES SHOWN ARE COLORADO STATE PLANE (NORTH ZONE) NAD 83.
- 3) ELEVATIONS ARE BASED UPON NGS OPUS SOLUTION NAVD 88 DATUM.
- 4) THE NEAREST EXISTING WELL IS: ESTES D27-10, 1026' EAST.
- 5) SEE LOCATION DRAWING FOR ALL IMPROVEMENTS WITHIN VISIBLE IMPROVEMENTS LIMIT.
- 6) THE LOCATION FALLS IN PASTURE LAND.



0 1000
Scale: 1" = 1000'



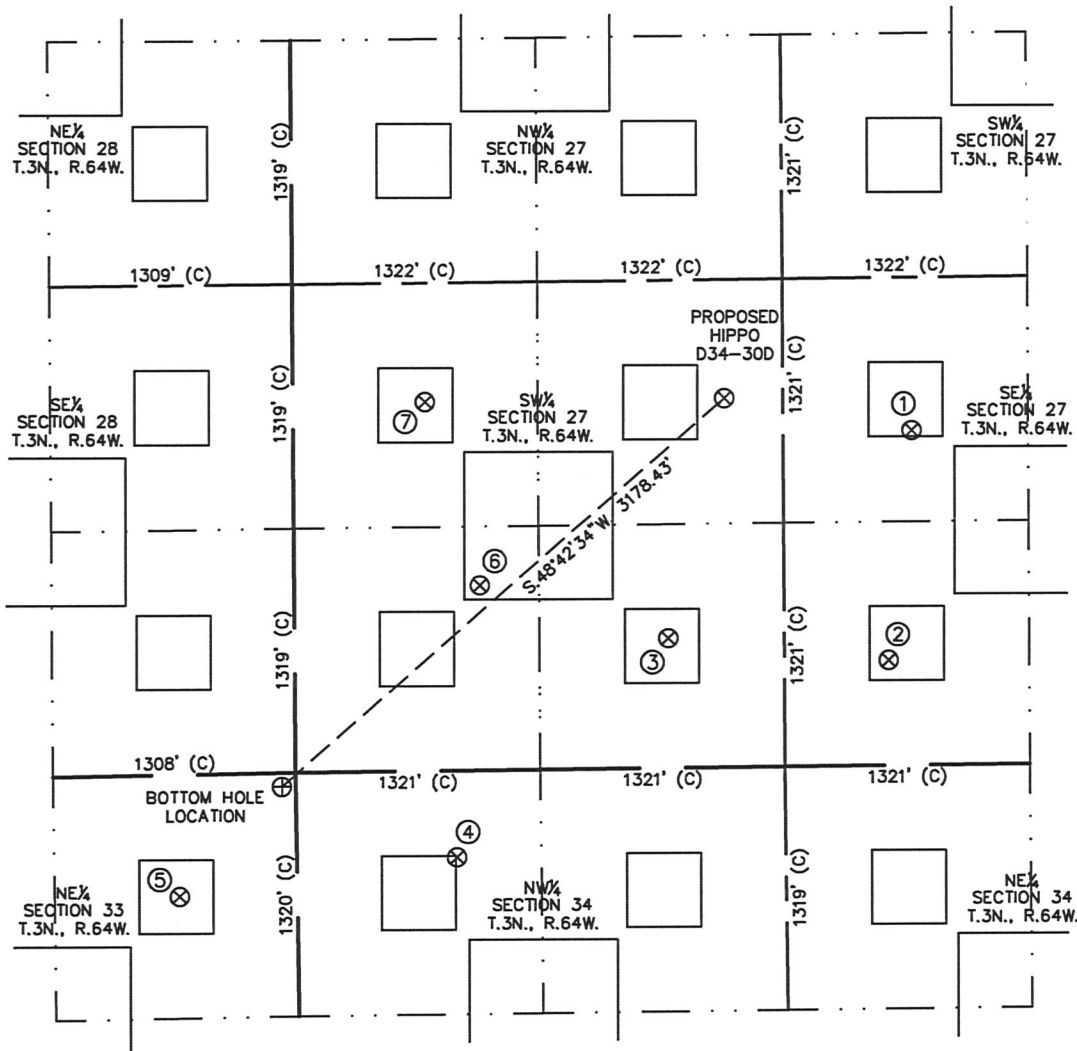
Completed 03/23/2011

David C. Holmes
Professional Land Surveyor Registration No. 32828
State of Colorado

JOB #11088

SITE SKETCH – HIPPO D34–30D

SECTION 27
TOWNSHIP 3 NORTH
RANGE 64 WEST



①	②	③	④	⑤	⑥	⑦
ESTES D27-10 NW/SE SEC. 27 1815' FSL 1950' FEL EL 4874' N 40.19410 W 104.53505 PDOP 2.0	KYLE WHITE D27-15 SW/SE SEC. 27 571' FSL 2079' FEL EL 4889' N 40.19068 W 104.53554 PDOP 1.6	CAMOLO RED D27-14 SE/SW SEC. 27 702' FSL 2017' FWL EL 4888' N 40.19105 W 104.53979 PDOP 2.0	HSR-WASTE SERVICES 4-34 NW/NW SEC. 34 468' FNL 865' FWL EL 4863' N 40.18784 W 104.54392 PDOP 2.3	CYDNEY WHITE D33-1 NE/NE SEC. 33 658' FNL 635' FEL EL 4848' N 40.18731 W 104.54929 PDOP 2.4	CAMOLO RED D27-3J SW/SW SEC. 27 1000' FSL 1002' FWL EL 4872' N 40.19187 W 104.54342 PDOP 2.1	CAMOLO RED D27-12 NW/SW SEC. 27 1997' FSL 713' FWL EL 4863' N 40.19461 W 104.54444 PDOP 1.5

NOTES:

- THIS SKETCH DOES NOT REPRESENT A BOUNDARY SURVEY.
- THE DATUM FOR THE LATITUDES AND LONGITUDES ON THIS SKETCH IS NAD83.

