

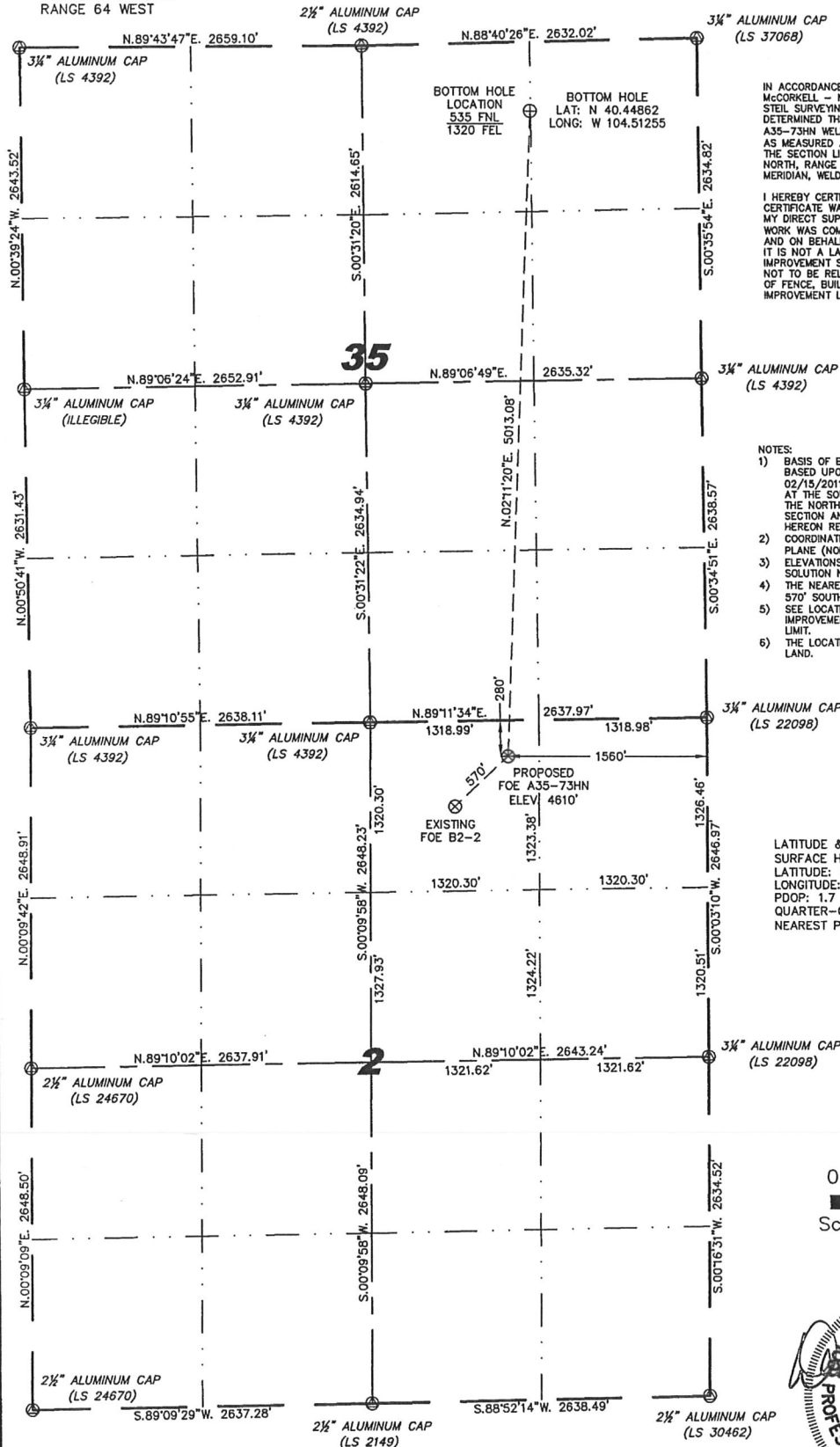
Stell Surveying Services, LLC

1102 West 19th Street P.O. BOX 2073

Cheyenne, Wyoming 82001

SECTION 35
TOWNSHIP 6 NORTH
RANGE 64 WEST
AND
SECTION 2
TOWNSHIP 5 NORTH
RANGE 64 WEST

WELL LOCATION CERTIFICATE THIS MAP DOES NOT REPRESENT A BOUNDARY SURVEY



IN ACCORDANCE WITH A REQUEST FROM NATE McCORKELL - NOBLE ENERGY INC., STELL SURVEYING SERVICES, LLC HAS DETERMINED THE LOCATION OF THE FOE A35-73HN WELL TO BE 280' FNL, 1560' FEL, AS MEASURED AT NINETY (90) DEGREES FROM THE SECTION LINES, SECTION 2, TOWNSHIP 5 NORTH, RANGE 64 WEST, 6TH PRINCIPLE MERIDIAN, WELD COUNTY, COLORADO.

I HEREBY CERTIFY THAT THIS WELL LOCATION CERTIFICATE WAS PREPARED BY ME, OR UNDER MY DIRECT SUPERVISION, THAT THE FIELD WORK WAS COMPLETED ON 02/14/2011, FOR AND ON BEHALF OF NOBLE ENERGY INC, THAT IT IS NOT A LAND SURVEY PLAT OR AN IMPROVEMENT SURVEY PLAT, AND THAT IT IS NOT TO BE RELIED UPON FOR ESTABLISHMENT OF FENCE, BUILDING, OR OTHER FUTURE IMPROVEMENT LINES.

NOTES:

- 1) BASIS OF BEARINGS FOR THIS MAP ARE BASED UPON GPS OBSERVATIONS MADE ON 02/15/2011 BETWEEN MONUMENTS LOCATED AT THE SOUTHEAST SECTION CORNER AND THE NORTHEAST SECTION CORNER OF SAID SECTION AND WITH ALL BEARINGS SHOWN HEREON RELATIVE THERETO.
- 2) COORDINATES SHOWN ARE COLORADO STATE PLANE (NORTH ZONE) NAD 83
- 3) ELEVATIONS ARE BASED UPON NGS OPUS SOLUTION NAVD 88 DATUM.
- 4) THE NEAREST EXISTING WELL IS: FOE B2-2, 570' SOUTHWEST.
- 5) SEE LOCATION DRAWING FOR ALL IMPROVEMENTS WITHIN VISIBLE IMPROVEMENT LIMIT.
- 6) THE LOCATION FALLS IN IRRIGATED CROP LAND.

LATITUDE & LONGITUDE (NAD 83
SURFACE HOLE):
LATITUDE: N 40.43488°
LONGITUDE: W 104.51343°
PDOP: 1.7
QUARTER-QUARTER: NW/4NE/4
NEAREST PROPERTY LINE: 241' EAST



0 1000

Scale: 1" = 1000'



NOTICE: According to Colorado law you MUST commence any legal action based upon any defect in this W.L.C. within three years after you first discover such defect. In no event may any action based upon any defect in this W.L.C. be commenced more than ten years from this sold date of the certification shown hereon.

LEGEND

- (A) FOUND SURVEY MONUMENT PER MONUMENT RECORD - EXCEPTIONS NOTED.
- (C) CALCULATED DIMENSION

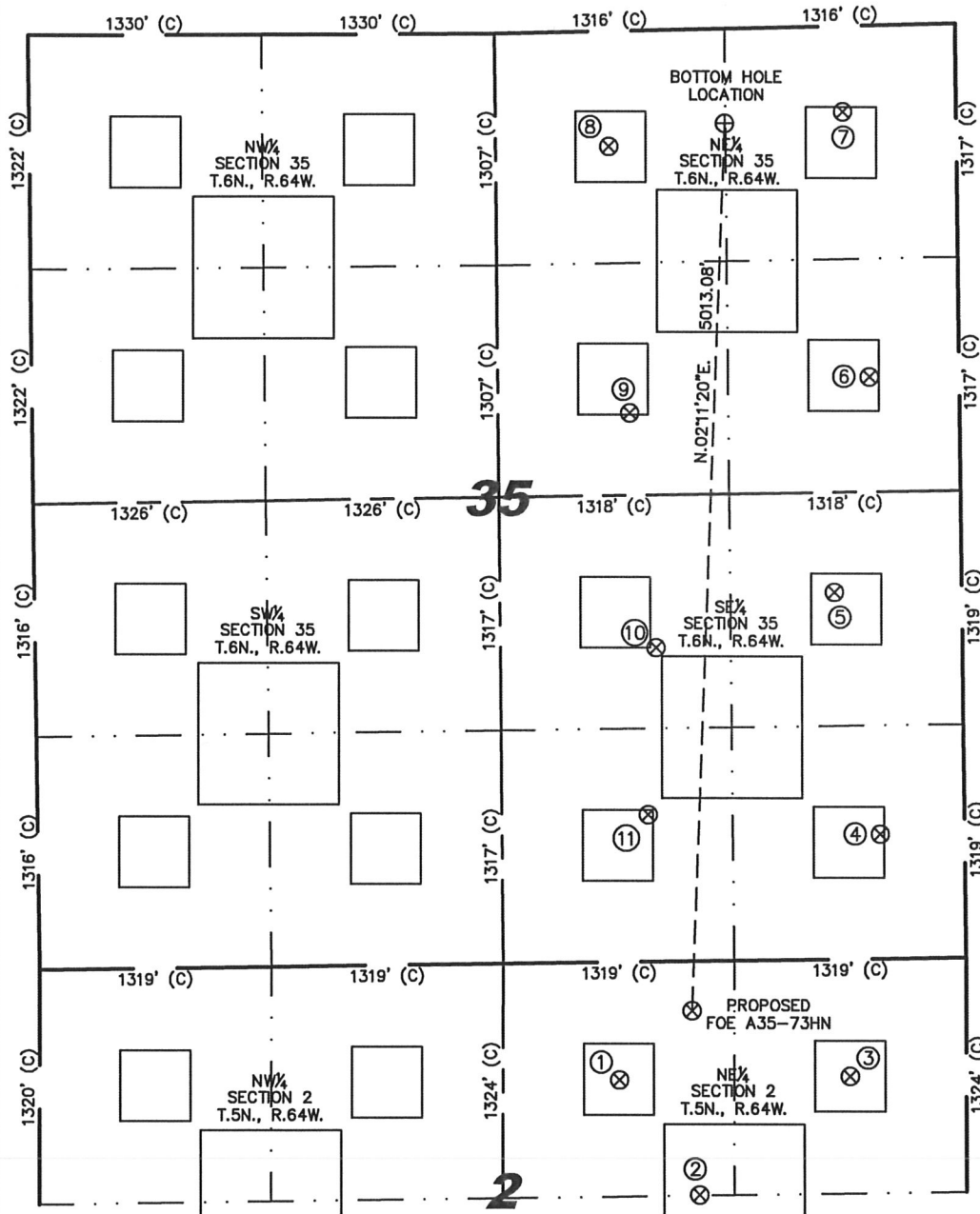
David C. Holmes
Professional Land Surveyor Registration No. 32828
State of Colorado

JOB #: 11086

Completed 2/17/2011

SITE SKETCH - FOE A35-73HN

SECTION 35
TOWNSHIP 6 NORTH
RANGE 64 WEST
AND
SECTION 2
TOWNSHIP 5 NORTH
RANGE 64 WEST



- | | |
|---|---|
| ①
FOE B2-2
NW/NE SEC. 2
T.5N., R.64W.
664' FNL
1975' FEL
EL 4611'
N 40.43382
W 104.51494
PDOP 1.7 | ②
FOE MEYER
B2-17
NW/NE SEC. 2
T.5N., R.64W.
1320' FNL
1517' FEL
EL 4614'
N 40.43203
W 104.51332
PDOP 2.3 |
| ③
MEYER B2-1
NE/NE SEC. 2
T.5N., R.64W.
662' FNL
659' FEL
(RECORD
LOCATION) | ④
HOFFNER
44-35
SE/SE SEC. 35
T.6N., R.64W.
704' FSL
480' FEL
EL 4620'
N 40.43759
W 104.50954
PDOP 1.6 |
| ⑤
HOFFNER
43-35
NE/SE SEC. 35
T.6N., R.64W.
2074' FSL
724' FEL
EL 4623'
N 40.44135
W 104.51041
PDOP 1.6 | ⑥
SHARKEY
42-35
SE/NE SEC. 35
T.6N., R.64W.
1983' FNL
512' FEL
EL 4626'
N 40.44468
W 104.50965
PDOP 1.9 |
| ⑦
SHARKEY
41-35
NE/NE SEC. 35
T.6N., R.64W.
484' FNL
647' FEL
EL 4628'
N 40.44879
W 104.51013
PDOP 1.9 | ⑧
SHARKEY
31-35
NW/NE SEC. 35
T.6N., R.64W.
651' FNL
1985' FEL
EL 4620'
N 40.44829
W 104.51494
PDOP 2.6 |

- | | | |
|--|--|---|
| ⑨
SHARKEY
32-35
SW/NE SEC. 35
T.6N., R.64W.
2156' FNL
1882' FEL
EL 4616'
N 40.44416
W 104.51457
PDOP 2.7 | ⑩
HOFFNER
33-35
NW/SE SEC. 35
T.6N., R.64W.
1774' FSL
1747' FEL
EL 4613'
N 40.44052
W 104.51409
PDOP 2.4 | ⑪
HOFFNER
34-35
SW/SE SEC. 35
T.6N., R.64W.
831' FSL
1801' FEL
EL 4611'
N 40.43793
W 104.51429
PDOP 2.2 |
|--|--|---|

NOTES:

- THIS SKETCH DOES NOT REPRESENT A BOUNDARY SURVEY.
- THE DATUM FOR THE LATITUDES AND LONGITUDES ON THIS SKETCH IS NAD83.



0 1000

Scale: 1" = 1000'