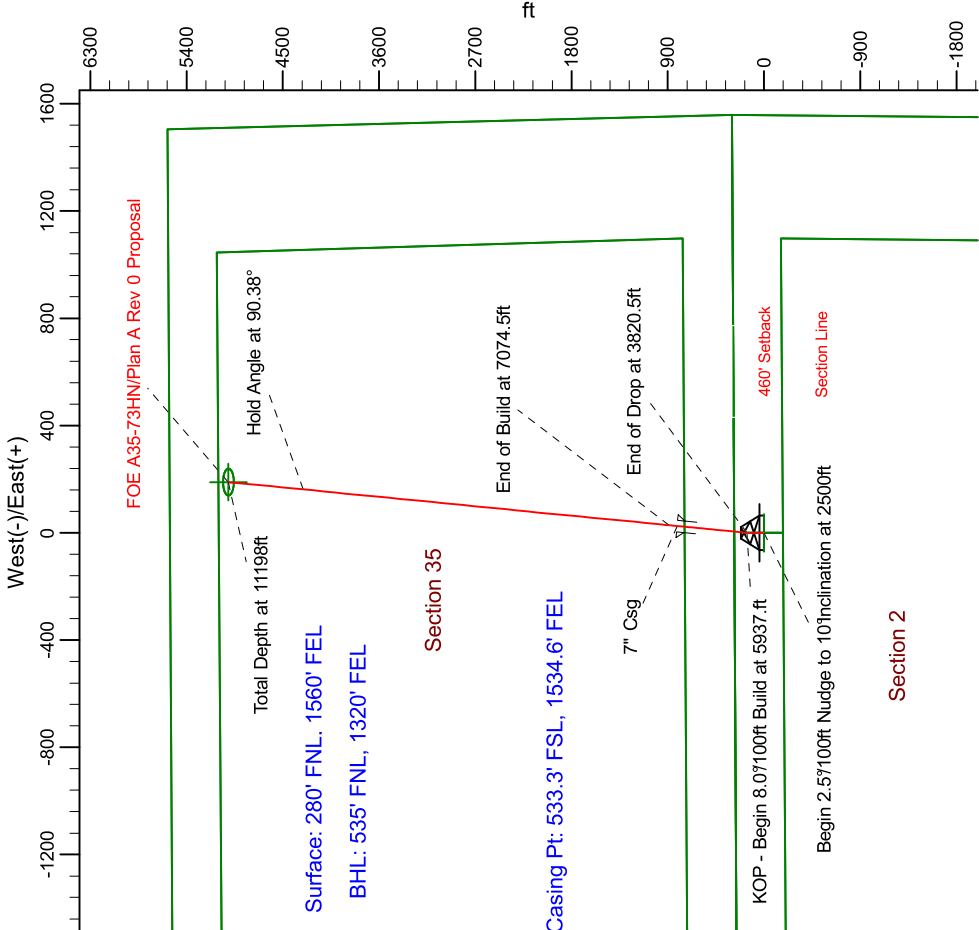
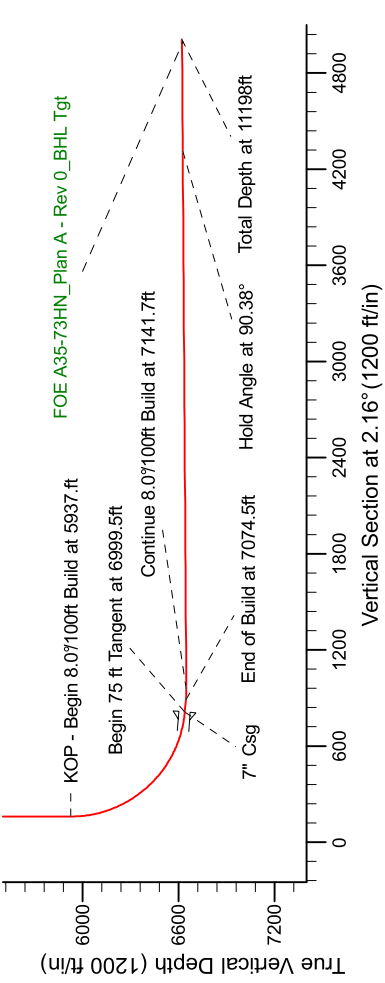
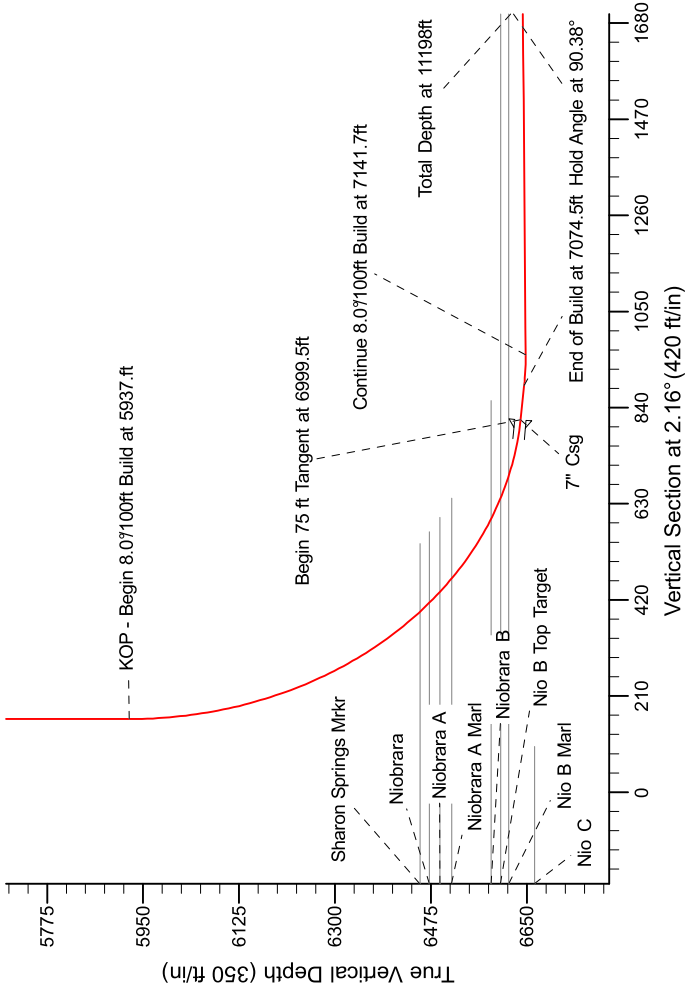


Project: Weld County Colorado (NAD 83)
Site: Sec. 2, T5N, R64W
Well: FOE A35-73HN
Wellbore: Plan A - Rev 0 (PERMITTING PLAN ONLY)
Design: Plan A Rev 0 Proposal

Noble Energy

SECTION DETAILS

Sec	MD	Inc	Azi	TVD	+N/-S	+E/-W	Dleg	TFace	VSec	Target
1	0.0	0.00	0.00	0.0	0.0	0.0	0.00	0.00	0.0	0.0
2	2500.0	0.00	0.00	2500.0	0.0	0.0	0.00	0.00	0.0	0.0
3	2899.9	10.00	0.00	2897.9	34.8	0.0	2.50	0.00	34.8	0.0
4	3420.5	10.00	0.00	3410.6	125.2	0.0	0.00	0.00	125.1	0.0
5	3820.5	10.00	0.00	3808.5	160.0	0.0	2.50	180.00	159.9	0.0
6	5937.0	0.00	0.00	5925.0	160.0	0.0	0.00	0.00	159.9	0.0
7	6999.5	85.00	2.23	6638.5	813.3	25.4	8.00	2.23	813.7	0.0
8	7074.5	85.00	2.23	6645.0	887.9	26.3	0.00	0.00	888.4	0.0
9	7141.7	90.38	2.23	6647.8	955.1	31.0	8.00	0.00	955.5	0.0
10	11198.0	90.38	2.24	6620.8	5008.1	189.2	0.00	77.34	5011.7	FOE A35-73HN_Plan A - Rev 0_BHL Tgt-



T

G

M

Magnetic Model: GMR200510
Date: 4/26/2011
Declination: 8.07°
Dip Angle: 67.13°
Field Strength: 53214.0

Grid North is 0.04° East of True North (Grid Convergence)
Magnetic North is 0.07° East of True North (Magnetic Declination)
To convert True Direction to a Grid Direction, Subtract 0.04°
To convert Magnetic Direction to a Grid Direction, Add 8.07°

WELL DETAILS: FOE A35-73HN(NAD 83 Geodetic System)			
Northing	Easting	Ground Level:	Longitude
427572.71	998107.06	4610.0	104° 30' 48.348 W
Latitude			
40° 26' 5.568 N			
Plan: Plan A Rev 0 Proposal (FOE A35-73HN/Plan A - Rev 0 (PERMITTING PLAN ONLY))			
Created By: Erasmo Mendoza Date: 16:30, April 26, 2011			