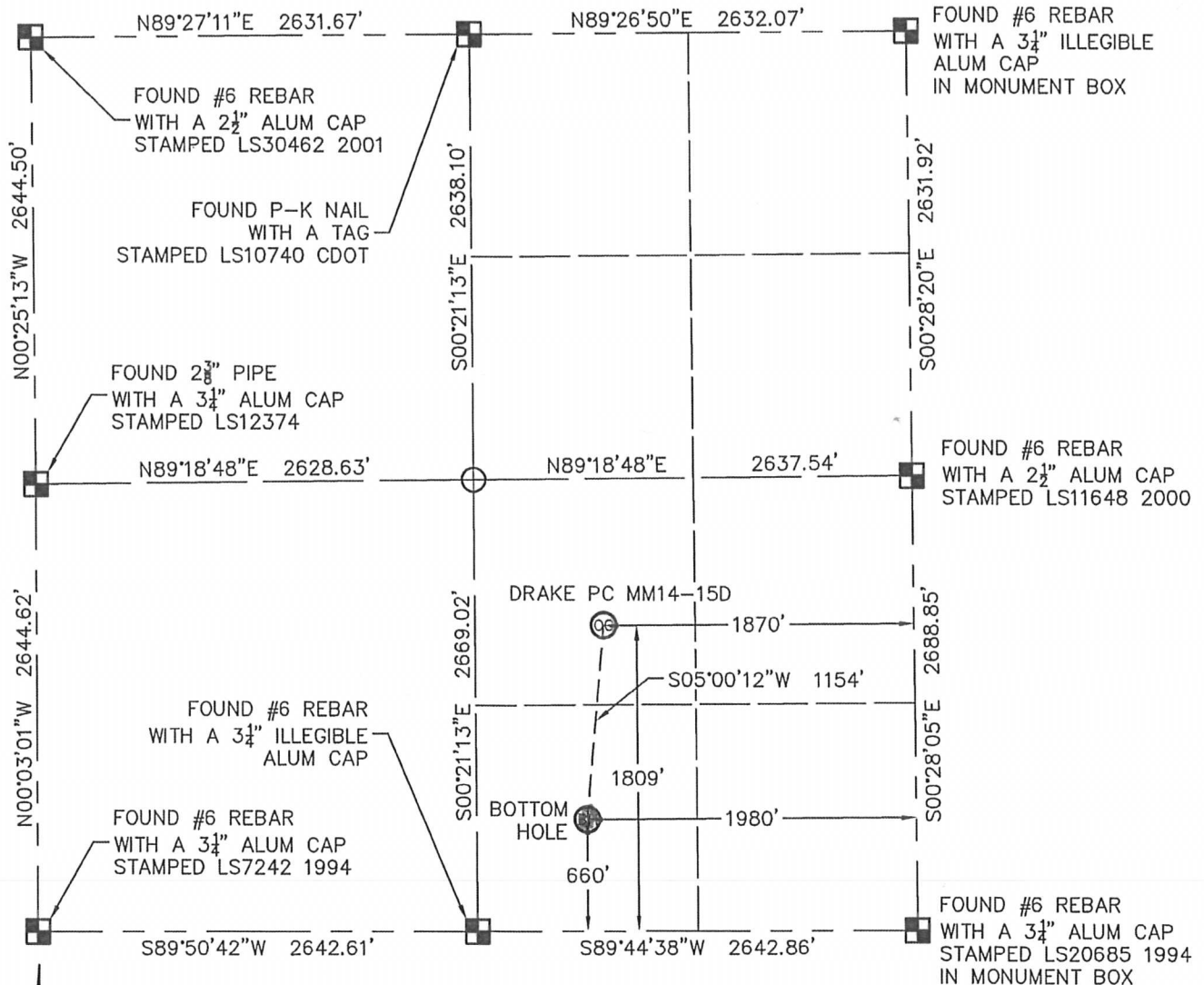


WELL LOCATION CERTIFICATE

DRAKE PC MM14-15D

THIS MAP DOES NOT REPRESENT A BOUNDARY SURVEY

SECTION: 14
TOWNSHIP: 7N
RANGE: 67W

In accordance with a request from RYAN ANTONIO with NOBLE ENERGY INC.

King Surveyors Inc. has determined the surface location of the DRAKE PC MM14-15D to be 1809' from the SOUTH line and 1870' from the EAST line and the bottom hole to be 660' from the SOUTH line and 1980' from the EAST line, as measured at right angles, from the section lines of Section 14, Township 7 North, Range 67 West of the Sixth Principal Meridian, County of Weld, State of Colorado.

I hereby state that this Well Location Certificate was prepared by me, or under my direct supervision, that the fieldwork was completed on 4-19-2011, for and on behalf of NOBLE ENERGY INC. That this is not a Land Survey Plat or an Improvement Survey Plat, and that it is not to be relied upon for establishment of fence, building, or other future improvement lines.

NOTE:

- 1) Bearings shown are Grid Bearings of the Colorado State Plane Coordinate System, North Zone, North American Datum 1983/2007. The lineal dimensions as contained herein are based upon the "U.S. Survey Foot."
- 2) Ground elevations are based on an observed GPS elevation (NAVD 1988 DATUM).
- 3) NEAREST EXISTING WELL: NO EXISTING WELLS IN THIS SECTION
- 4) IMPROVEMENTS: See LOCATION DRAWING exhibit for all visible improvements within 400' of disturbed area.
- 5) SURFACE USE: CROP FIELD
- 6) FIELD OPERATOR: BEN ADSIT

SURFACE LOCATION
LATITUDE: 40.57185°N
LONGITUDE: 104.85760°W
PDOP: 1.9
ELEV: 5002'
1/4, 1/4: NW1/4 SE1/4
NEAREST PROPERTY LINE: 109' WEST

BOTTOM HOLE
LATITUDE: 40.56870°N
LONGITUDE: 104.85799°W

LEGEND

- = FOUND ALIQUOT MONUMENT AS DESCRIBED
- = CALCULATED POSITION
- = SET ALIQUOT MONUMENT AS DESCRIBED

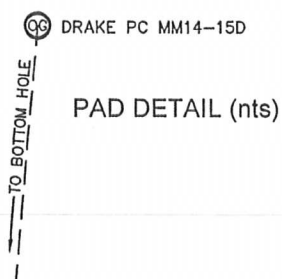
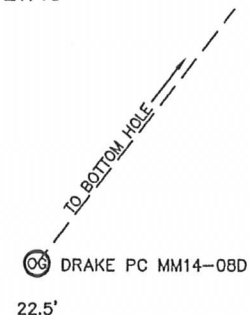
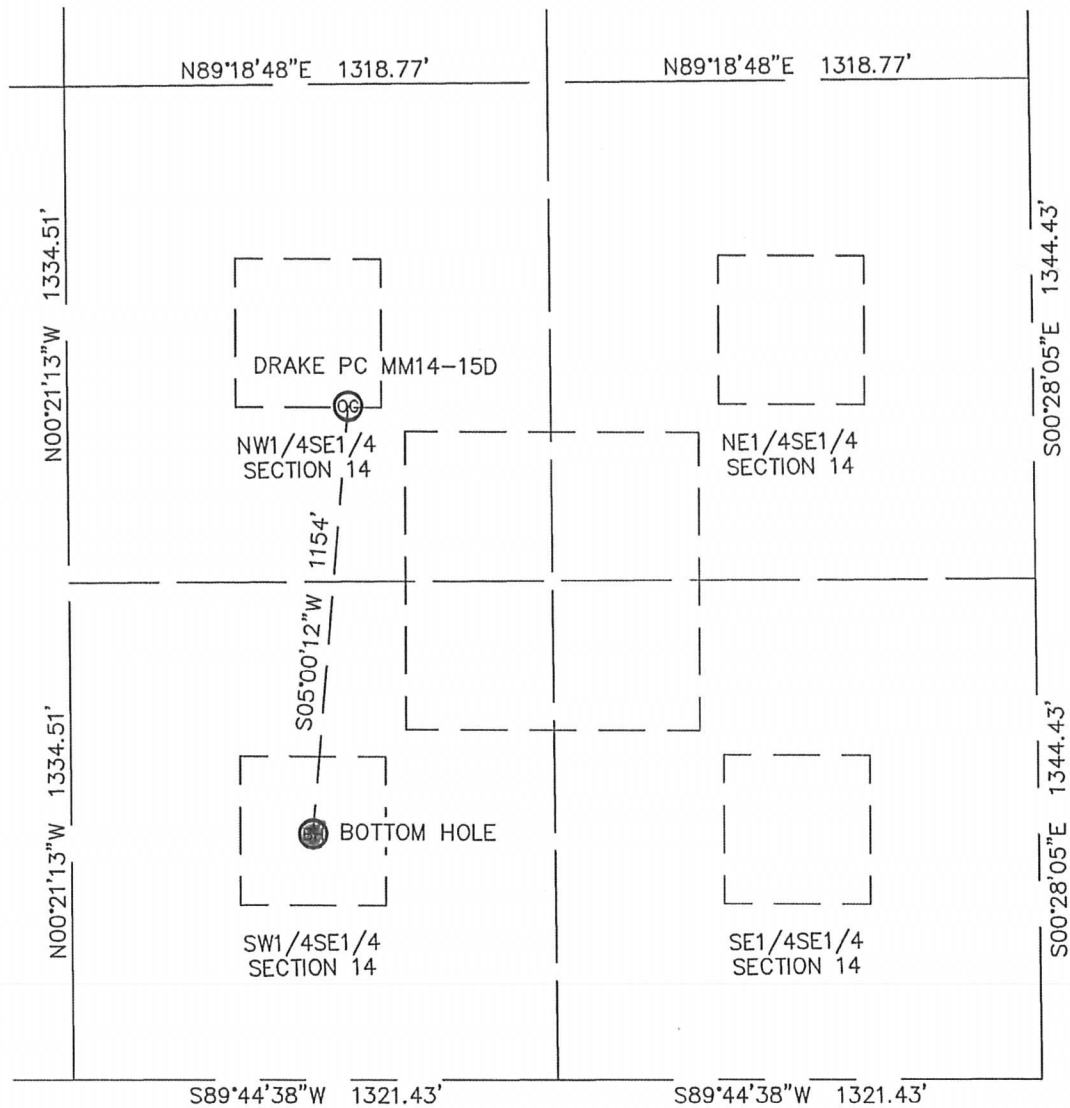
NOTE:

According to Colorado law, you must commence any legal action based upon any defect in this W.L.C. within three years after you discover such defect. In no event, may any action based upon any defect in this survey be commenced more than ten years after the date of the certificate shown hereon. (13-80-105 C.R.S.)

Michael Chad Dilka - On Behalf of King Surveyors, Inc.
Colorado Licensed Professional Land Surveyor #38106
PROJECT#: 2011172

SITE SKETCH
DRAKE PC MM14-15D

SECTION: 14
TOWNSHIP: 7N
RANGE: 67W



PAD DETAIL (nts)

