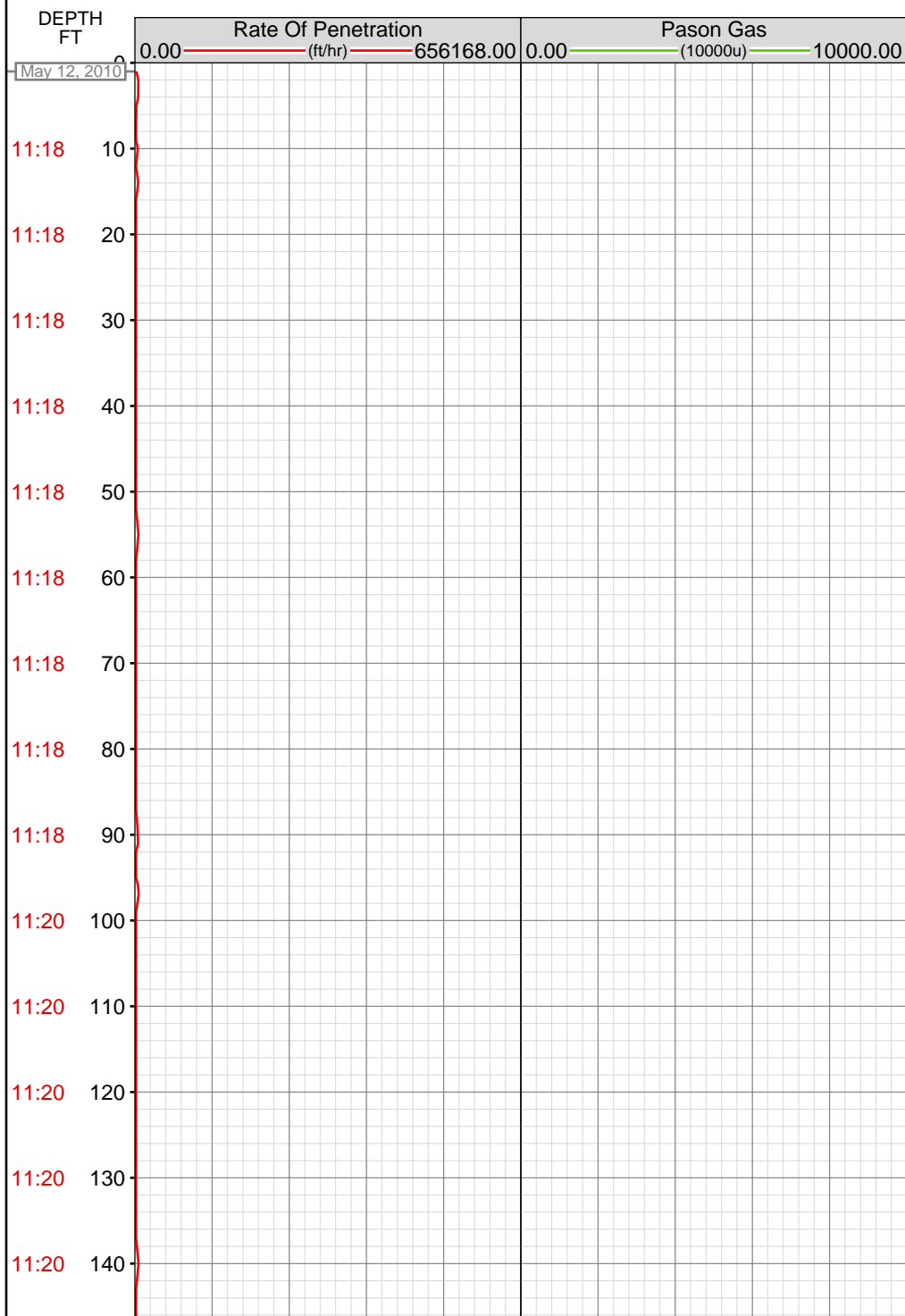


DataHub EDR Log

Fri May 28, 2010 13:46:14
Well Dossier 1273666775
Marilyn Tucker

OPERATOR: EnCana Oil & Gas (USA), Inc.
WELL: NP WF 04B-27 K22 596
FIELD:
LOCATION: NESW SEC:22 TWP:5S RNG:96W MER:6th
COUNTRY: USA
RIG: Pat-UTI 303

CONTRACTOR: Patterson-UTI Drilling Company
UNIQUE WELL ID:
SPUD DATE: May 12, 2010 15:30
RELEASE DATE: May 17, 2010 16:30



MEMOS

11:20 150

11:21 160

11:21 170

11:21 180

11:22 190

11:22 200

11:22 210

11:22 220

11:23 230

11:23 240

11:23 250

11:23 260

11:23 270

11:23 280

11:25 290

11:25 300

11:25 310

11:25 320

11:25 330

11:25 340

11:25 350

11:25 360

11:25 370

11:28 380

380.00imperial: IN TALLY: HOLE DEPTH SET TO
565.5

11:29 570

11:29 580

11:29 590

11:29 600

11:29 610

11:29 620

11:29 630

11:29 640

11:29 650

654.46imperial: INSTALL ROT RUBBER

11:37 660

11:37 670

11:42 680

11:42 690

11:42 700

11:42 710

11:46 720

11:46 730

11:46 740

11:51 750

11:51 760

11:51 770

11:51 780

11:51 790

11:52 800

11:52 810

11:52 820

11:52 830

11:52 840

11:53 850

11:53 860

11:53 870

11:53 880

11:53 890

11:53 900

11:53 910

11:53 920

11:53 930

11:55 940

11:55 950

11:55 960

11:55 970

11:55 980

11:55 990

11:55 1000

11:55 1010

11:55 1020

11:57 1030

11:57 1040

11:57 1050

11:57 1060

11:57 1070

11:57 1080

11:57 1090

11:57 1100

11:57 1110

11:58 1120

11:58 1130

11:59 1140

11:59 1150

11:59 1160

11:59 1170

11:59 1180

11:59 1190

11:59 1200

11:59 1210

12:01 1220

12:01 1230

12:01 1240

12:01 1250

12:01 1260

12:01 1270

12:01 1280

12:01 1290

12:01 1300

12:03 1310

12:03 1320

12:03 1330

12:03 1340

12:03 1350

12:03 1360

12:03 1370

12:03 1380

12:03 1390

12:04 1400

12:04 1410

12:05 1420

12:05 1430

12:05 1440

12:05 1450

12:05 1460

12:05 1470

12:05 1480

12:05 1490

12:06 1500

12:06 1510

12:07 1520

12:07 1530

12:07 1540

12:07 1550

12:07 1560

12:07 1570

12:07 1580

12:09 1590

12:09 1600

12:09 1610

12:09 1620

12:09 1630

15:00 1640

15:00 1650
15:00 1660
15:01 1670
15:02 1680
15:05 1690
15:06 1700
15:08 1710
15:12 1720
15:18 1730
15:22 1740
15:26 1750
15:35 1760
15:40 1770
15:41 1780
15:44 1790
15:50 1800
15:57 1810
16:00 1820
16:06 1830
16:09 1840
16:17 1850
16:24 1860

1676.38imperial: SLIP AND CUT
1676.38imperial: CHANG OUT SAVER SUB
1677.88imperial: BOP DRILL
1680.00imperial: IN TALLY: HOLE DEPTH SET
TO 1665.8

1690.00imperial: ZWOB from SideKick
sk-06-03-3103
1690.00imperial: ZDiffPressure from SideKick
sk-06-03-3103

1730.14imperial: 021TGAS 03090394 SW0.27
HW25.00 - 45 days on

1767.00imperial: MUD VIS 0.42
1768.00imperial: MUD WEIGHT 8.90

1800.00imperial: MUD VIS 0.44
1800.00imperial: MUD WEIGHT 8.90

1849.16imperial: Connection at 1849.2
1849.16imperial: SURVEY @ 1799 INC 30.7 AZI
193.2
1849.16imperial: SLIDING

1862.28imperial: ROTATING

16:28 1870
16:31 1880
16:36 1890
16:39 1900
16:42 1910
16:45 1920
16:48 1930
17:03 1940
17:07 1950
17:11 1960
17:15 1970
17:19 1980
17:21 1990
17:24 2000
17:26 2010
17:28 2020
17:31 2030
17:40 2040
17:43 2050
17:46 2060
17:50 2070
17:54 2080

1880.00imperial: ZDiffPressure from SideKick
sk-06-03-3103

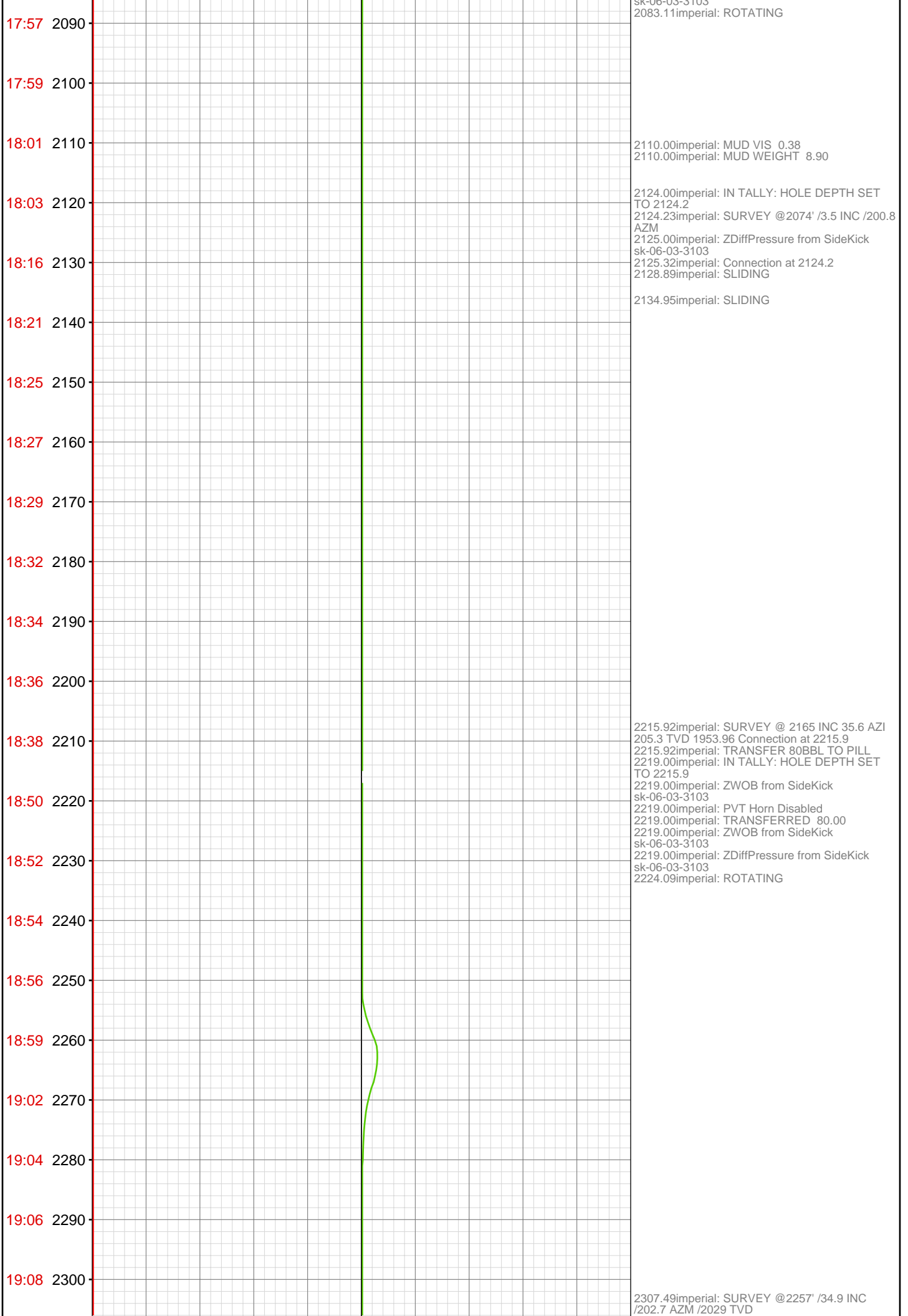
1932.96imperial: Connection at 1940.9
1933.00imperial: IN TALLY: HOLE DEPTH SET
TO 1940.9
1933.00imperial: HOOK LOAD THRESHOLD
RECALIBRATED TO 32
1933.00imperial: HOOKLOAD WAS
RECALIBRATED
1940.90imperial: SURVEY @ INC 30.7 AZI 194
1940.90imperial: SLIDING

1951.00imperial: MUD VIS 0.41
1951.00imperial: MUD WEIGHT 8.90

1979.36imperial: ROTATING

2025.94imperial: SURVEY @ 1982 INC 30.9 AZI
197.2 TVD 1801.15
2032.55imperial: IN TALLY: HOLE DEPTH SET
TO 2032.6
2032.55imperial: SLIDING
2033.53imperial: Connection at 2032.5

2083.00imperial: ZDiffPressure from SideKick
sk-06-03-3103
2083.00imperial: ZWOB from SideKick
sk-06-03-3103



Time	Depth	
19:29	2310	
19:31	2320	
19:33	2330	
19:35	2340	
19:37	2350	
19:39	2360	
19:41	2370	
19:43	2380	
19:45	2390	
19:47	2400	2307.49imperial: RESET TOP DRIVE 2308.00imperial: IN TALLY: HOLE DEPTH SET TO 2307.5 2308.00imperial: ZDiffPressure from SideKick sk-06-03-3103 2309.83imperial: Connection at 2307.5
19:57	2410	
19:59	2420	
20:02	2430	
20:03	2440	
20:05	2450	
20:08	2460	
20:10	2470	
20:12	2480	
20:13	2490	2399.00imperial: IN TALLY: HOLE DEPTH SET TO 2399.2 2399.00imperial: MUD VIS 0.40 2399.00imperial: MUD WEIGHT 8.90 2399.00imperial: ZDiffPressure from SideKick sk-06-03-3103 2399.23imperial: Connection at 2399.2 SURVEY @ INC 34.5 AZI 204 TVD 2104.74 2399.23imperial: ROTATING SAND TRAP 10 BBLS
20:24	2500	2490.95imperial: SURVEY @ 2440' /33.8 INC/ 204.6 AZM/ 2180 TVD 2490.95imperial: ZDiffPressure from SideKick sk-06-03-3103 2491.00imperial: IN TALLY: HOLE DEPTH SET TO 2491.0 2491.00imperial: PVT Horn Disabled 2491.44imperial: SLIDING 2498.84imperial: Connection at 2490.9
20:28	2510	
20:32	2520	2515.73imperial: ROTATING

20:33 2530

20:36 2540

20:38 2550

20:40 2560

20:42 2570

20:45 2580

20:59 2590

21:02 2600

21:09 2610

21:11 2620

21:13 2630

21:15 2640

21:18 2650

21:20 2660

21:22 2670

21:35 2680

21:39 2690

21:43 2700

21:45 2710

21:47 2720

21:50 2730

21:52 2740



2582.00imperial: PVT Horn Disabled
2582.00imperial: ZDiffPressure from SideKick
sk-06-03-3103
2582.00imperial: ZWOB from SideKick
sk-06-03-3103
2582.70imperial: IN TALLY: HOLE DEPTH SET
TO 2582.7

2605.00imperial: ZDiffPressure from SideKick
sk-06-03-3103
2605.86imperial: Connection at 2582.7

2615.60imperial: ZERO ALL PUMPS from
SideKick sk-05-05-1268
2618.70imperial: SWEEP 25 BBLS

2658.00imperial: MUD VIS 0.41
2659.00imperial: MUD WEIGHT 8.85

2674.43imperial: Connection at 2674.4
2674.43imperial: SLIDING SURVEY @ 2624 INC
34.2 AZI 201.7 TVD 2330.96
2675.00imperial: IN TALLY: HOLE DEPTH SET
TO 2674.4
2675.00imperial: ZDiffPressure from SideKick
sk-06-03-3103

21:54 2750 -

2753.47imperial: ROTATING

21:56 2760 -

```
2767.00imperial: ZDiffPressure from SideKick
sk-06-03-3103
2767.29imperial: PVT Horn Enabled
2767.29imperial: SURVEY @ 2716 INC 33.4 AZI
200.7 TVD 2407.41
2767.29imperial: Connection at 2766.3
2767.29imperial: SLIDING
```

22:05 2770-

22:09 2780 -

22:13 2790 -

2795.63imperial: ROTATING

22:15 2800 -

22:17 2810-

22:20 2820 -

22:22 2830 -

22:24 2840 -

22:26 2850 -

2850.35imperial: CLEAN SAND TRAP WORKED
ON SAND 65 BBLS

22:31 2860 -

2857.98	imperial: SURVEY @2807' /34.5 INC/ 197.1 AZM/ 2482.9 TVD
2859.00	imperial: IN TALLY: HOLE DEPTH SET TO 2858.0
2861.41	imperial: Connection at 2858.0

22:33 2870 -

22:35 2880 -

22:37 2890 -

22:39 2900 -

22:41 2910 -

22:44 2920 -

22:46 2930 -

22:48 2940 -

22:55 2950 -

2949.62imperial: Connection at 2949.6
2949.62imperial: SLIDING SURVEY @ 2899' /
32.6 INC /197.7 AZM
2951.00imperial: IN TALLY: HOLE DEPTH SET
TO 2949.6

23:00 2960 -

23:05 2970

23:09 2980

23:11 2990

23:13 3000

23:15 3010

23:17 3020

23:19 3030

23:21 3040

23:28 3050

23:30 3060

23:32 3070

23:34 3080

23:36 3090

23:38 3100

23:41 3110

23:43 3120

23:46 3130

23:55 3140

May 13, 2010
00:00 3150

00:05 3160

00:09 3170

00:12 3180

2976.34imperial: ROTATING

3041.30imperial: SURVEY @ 2991' / 34.1 INC / 198.2 AZM
3042.00imperial: IN TALLY: HOLE DEPTH SET TO 3041.3
3042.00imperial: ZWOB from SideKick sk-06-03-3103
3042.00imperial: ZDiffPressure from SideKick sk-06-03-3103
3043.00imperial: ZERO ALL PUMPS from SideKick sk-05-05-1268
3044.48imperial: Connection at 3041.3
3047.00imperial: MUD VIS 0.42
3047.00imperial: MUD WEIGHT 8.75
3049.39imperial: PUMP SWEEP

3094.88imperial: TRANSFERRED 60.00

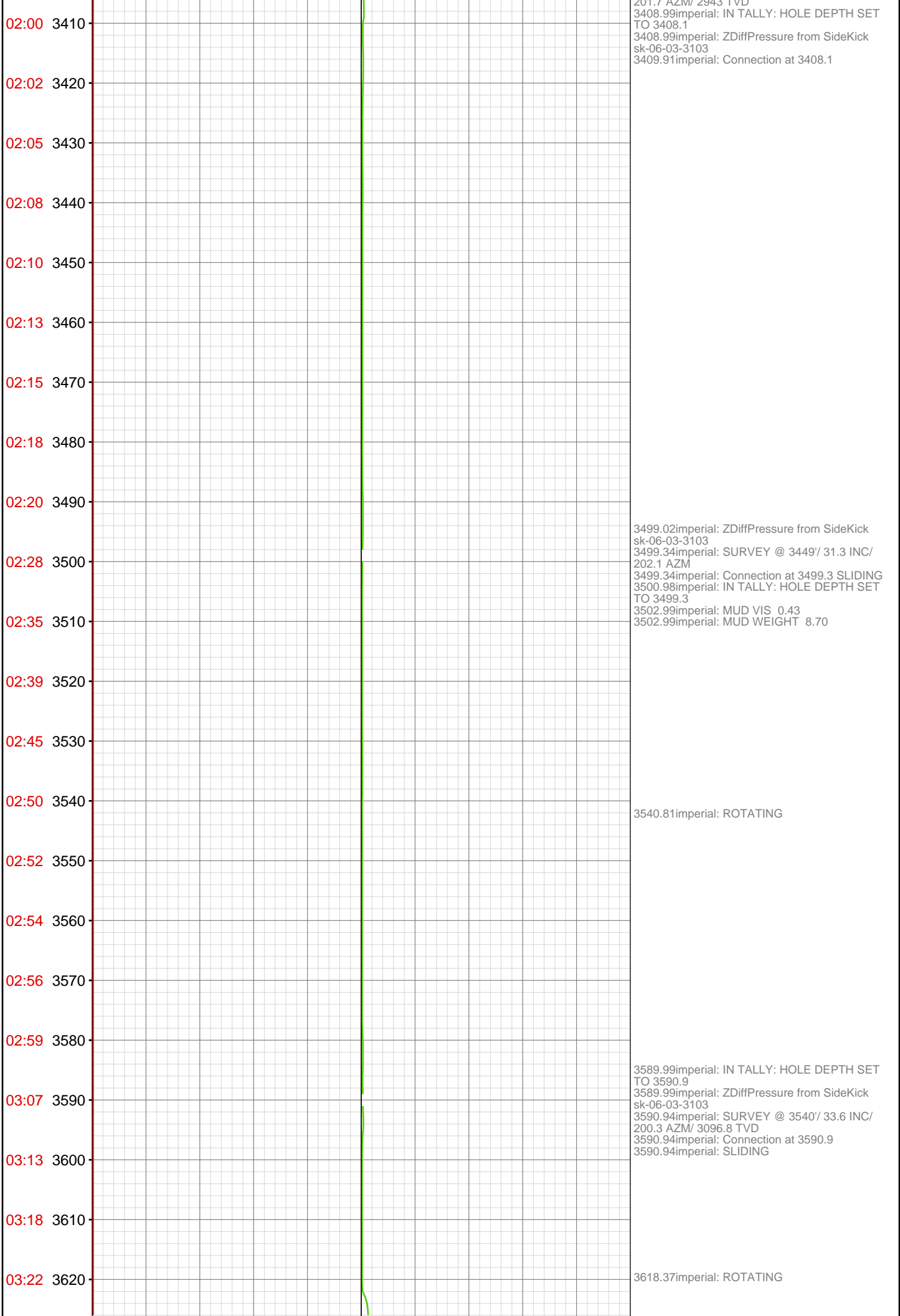
3132.89imperial: Connection at 3132.9

3139.05imperial: SURVEY @3082'/ 31.8INC/ 197.4 AZM

3146.19imperial: SLIDING

3180.42imperial: ROTATING

[illegible]



03:26 3630
03:28 3640
03:31 3650
03:34 3660
03:36 3670
03:38 3680
03:45 3690
03:48 3700
03:50 3710
03:52 3720
03:55 3730
03:57 3740
04:00 3750
04:02 3760
04:05 3770
04:11 3780
04:13 3790
04:15 3800
04:17 3810
04:19 3820
04:22 3830
04:24 3840

3633.66imperial: PUMP SWEEP

3639.01imperial: ZERO ALL PUMPS from
SideKick sk-05-05-1268

3682.58imperial: SURVEY @ 3632'/ 36.1 INC/ 199
AZM/ 3172 TVD
3683.01imperial: IN TALLY: HOLE DEPTH SET
TO 3682.6
3686.42imperial: Connection at 3682.6

3752.00imperial: MUD VIS 0.40
3752.00imperial: MUD WEIGHT 9.00

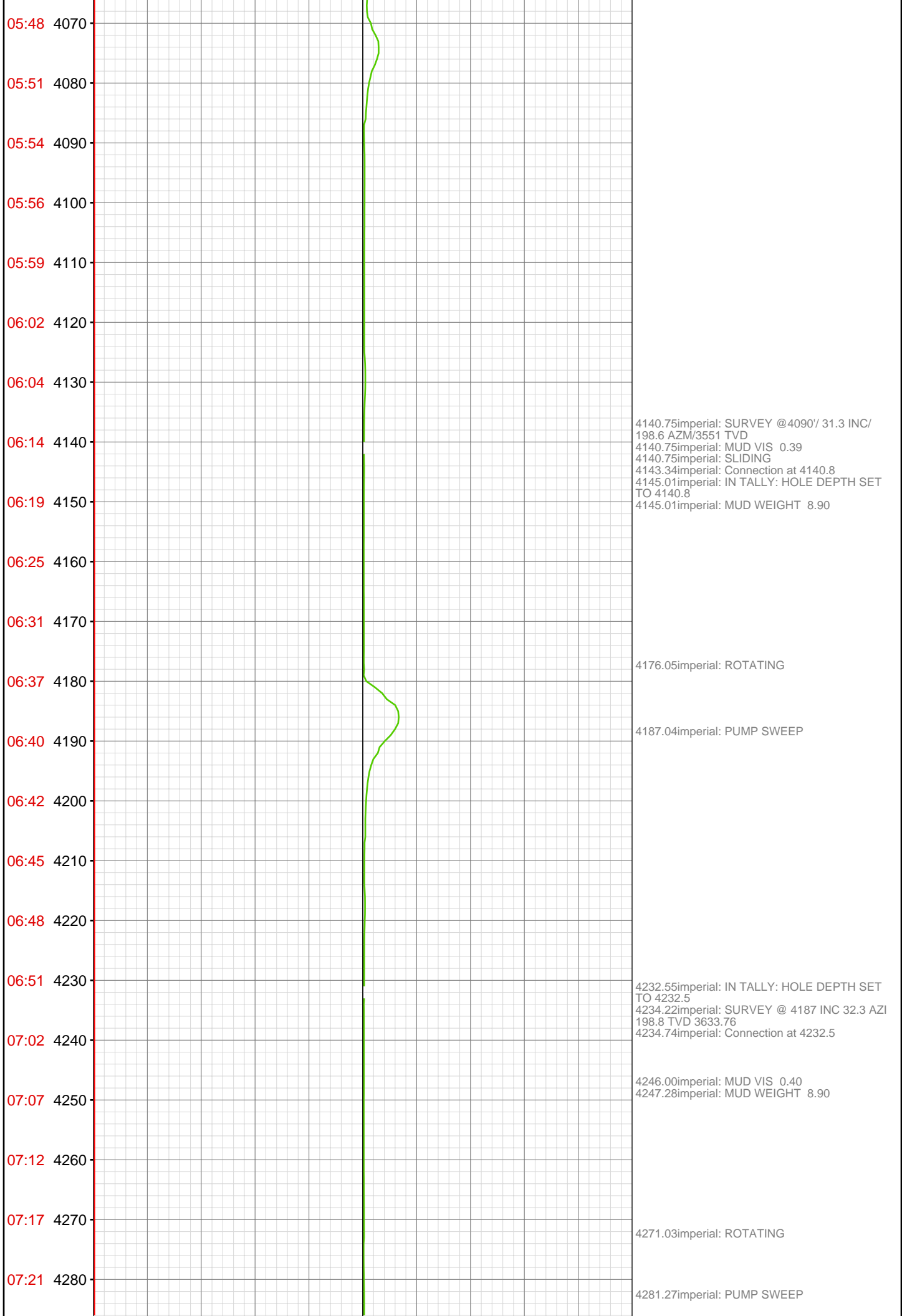
3774.21imperial: SURVEY @ 3724'/ 34.5 INC/
198.9AZM/ 3247.4 TVD
3775.00imperial: IN TALLY: HOLE DEPTH SET
TO 3774.2
3777.00imperial: Connection at 3774.2

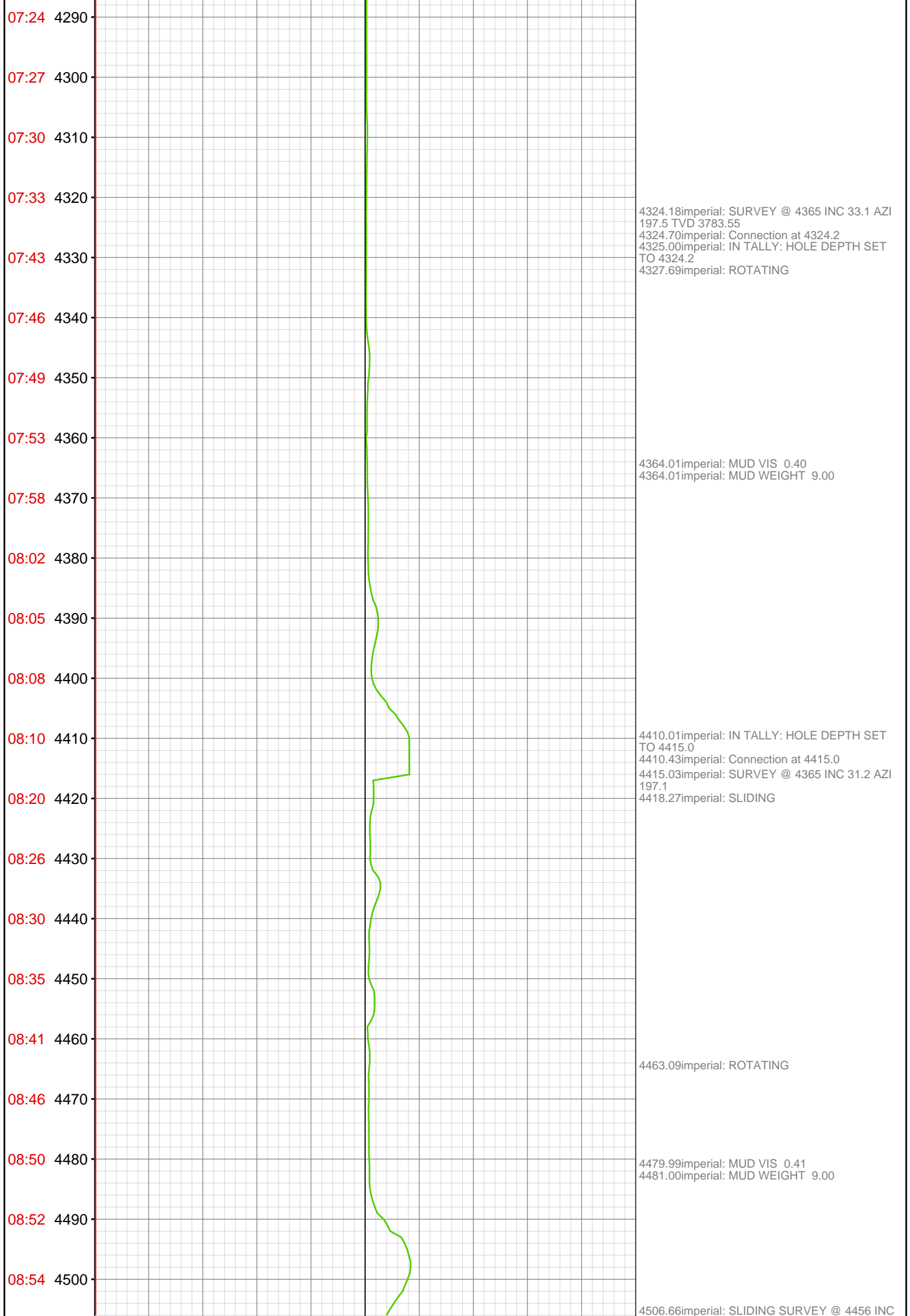
04:25 3850
04:28 3860
04:38 3870
04:43 3880
04:48 3890
04:52 3900
04:57 3910
04:59 3920
05:02 3930
05:04 3940
05:06 3950
05:18 3960
05:21 3970
05:24 3980
05:26 3990
05:28 4000
05:30 4010
05:33 4020
05:35 4030
05:37 4040
05:39 4050
05:46 4060

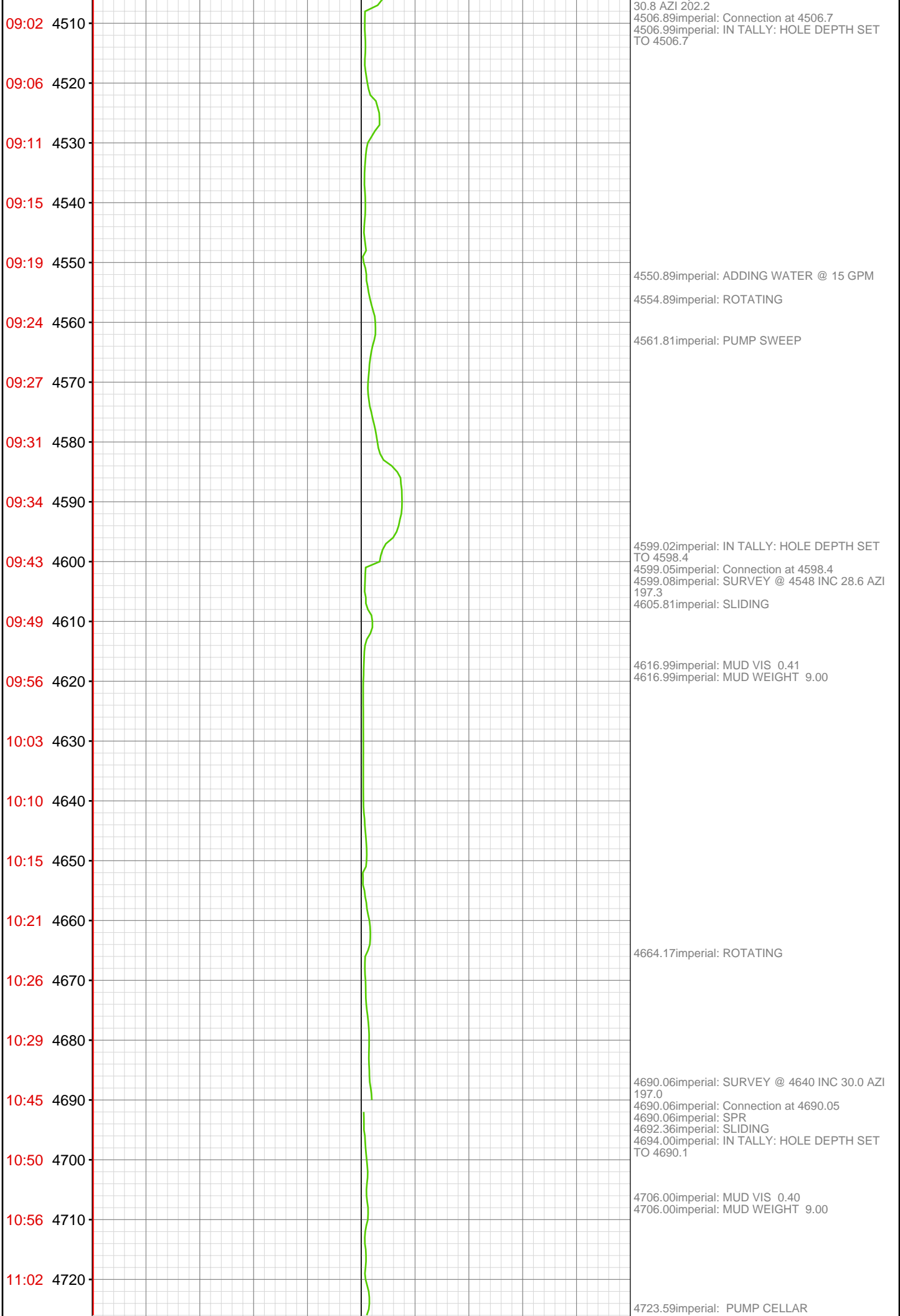
3864.99imperial: IN TALLY: HOLE DEPTH SET
TO 3865.8
3865.85imperial: SURVEY @ 3815'/ 33.1 INC/
200.5 AZM/3323 TVD
3866.08imperial: Connection at 3865.8 SLIDING

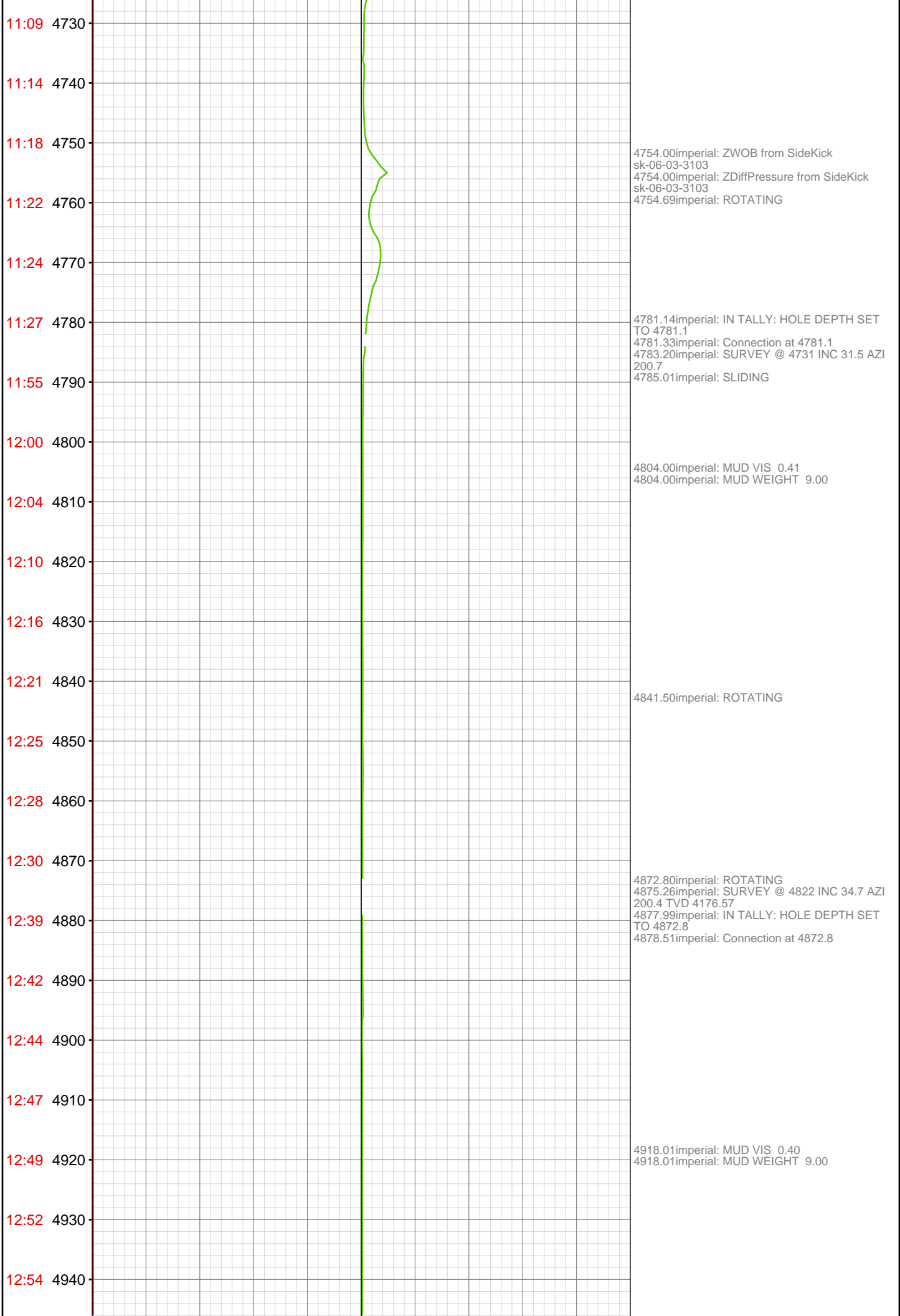
3956.99imperial: IN TALLY: HOLE DEPTH SET
TO 3957.5
3956.99imperial: MUD WEIGHT 9.00
3956.99imperial: ZWOB from SideKick
sk-06-03-3103
3957.48imperial: MUD VIS 0.39
3958.37imperial: SURVEY @ 3907'/ 35.6 INC/
198.9 AZM/ 3399 TVD
3961.38imperial: Connection at 3957.5

4048.16imperial: SURVEY @ 3999'/ 33.8 INC/
198.2 AZM/ 3474.6 TVD
4050.00imperial: ZWOB from SideKick
sk-06-03-3103
4050.00imperial: ZDiffPressure from SideKick
sk-06-03-3103
4050.92imperial: Connection at 4049.2









12:57 4950

13:00 4960

13:07 4970

13:10 4980

13:12 4990

13:14 5000

13:17 5010

13:19 5020

13:22 5030

13:24 5040

13:27 5050

13:35 5060

13:38 5070

13:41 5080

13:44 5090

13:46 5100

13:48 5110

13:50 5120

13:53 5130

13:56 5140

14:04 5150

14:11 5160

4964.01imperial: IN TALLY: HOLE DEPTH SET
TO 4964.4
4964.34imperial: SURVEY @ 4914 INC 33.4 AZI
201.2 TVD 4252.79
4965.95imperial: Connection at 4964.4
4966.27imperial: ROTATING

5056.99imperial: IN TALLY: HOLE DEPTH SET
TO 5056.1
5057.61imperial: SURVEY @ 5006 INC 31.6 AZI
201.8 TVD 4330.38
5057.84imperial: Connection at 5056.1

5067.78imperial: ROTATING

5094.00imperial: PUMP CELLAR

5147.01imperial: IN TALLY: HOLE DEPTH SET
TO 5147.8
5147.67imperial: Connection at 5147.8
5147.80imperial: SLIDING
5148.00imperial: ZDiffPressure from SideKick
sk-06-03-3103

14:19 5170
14:23 5180
14:25 5190
14:32 5200
14:34 5210
14:37 5220
14:40 5230
14:42 5240
14:50 5250
14:53 5260
14:55 5270
14:58 5280
15:01 5290
15:04 5300
15:06 5310
15:10 5320
15:13 5330
15:21 5340
15:24 5350
15:27 5360
15:29 5370
15:32 5380

5172.93imperial: ROTATING PUMP SWEEP

5181.00imperial: MUD VIS 0.40
5181.00imperial: MUD WEIGHT 9.00

5239.47imperial: IN TALLY: HOLE DEPTH SET
TO 5239.5 Connection at 5239.5
5239.47imperial: SURVEY @ 5189 INC 29.6 AZI
201.2 TVD 4488.54
5239.99imperial: MUD VIS 0.41
5241.01imperial: MUD WEIGHT 9.00

5248.88imperial: ROTATING

5331.14imperial: SURVEY @ 5281 INC 28.7 AZI
198.7 TVD 4568.89 ROTATING
5331.99imperial: IN TALLY: HOLE DEPTH SET
TO 5331.1
5331.99imperial: ZWOB from SideKick
sk-06-03-3103
5331.99imperial: ZDiffPressure from SideKick
sk-06-03-3103
5331.99imperial: 021TGAS 03090394 SW0.27
HW25.00 - 46 days on
5332.64imperial: Connection at 5331.1

15:35 5390

15:37 5400

15:40 5410

15:43 5420

15:52 5430

15:55 5440

15:58 5450

16:01 5460

16:04 5470

16:07 5480

16:11 5490

16:14 5500

16:17 5510

16:47 5520

16:50 5530

16:53 5540

16:55 5550

16:58 5560

17:01 5570

17:05 5580

17:08 5590

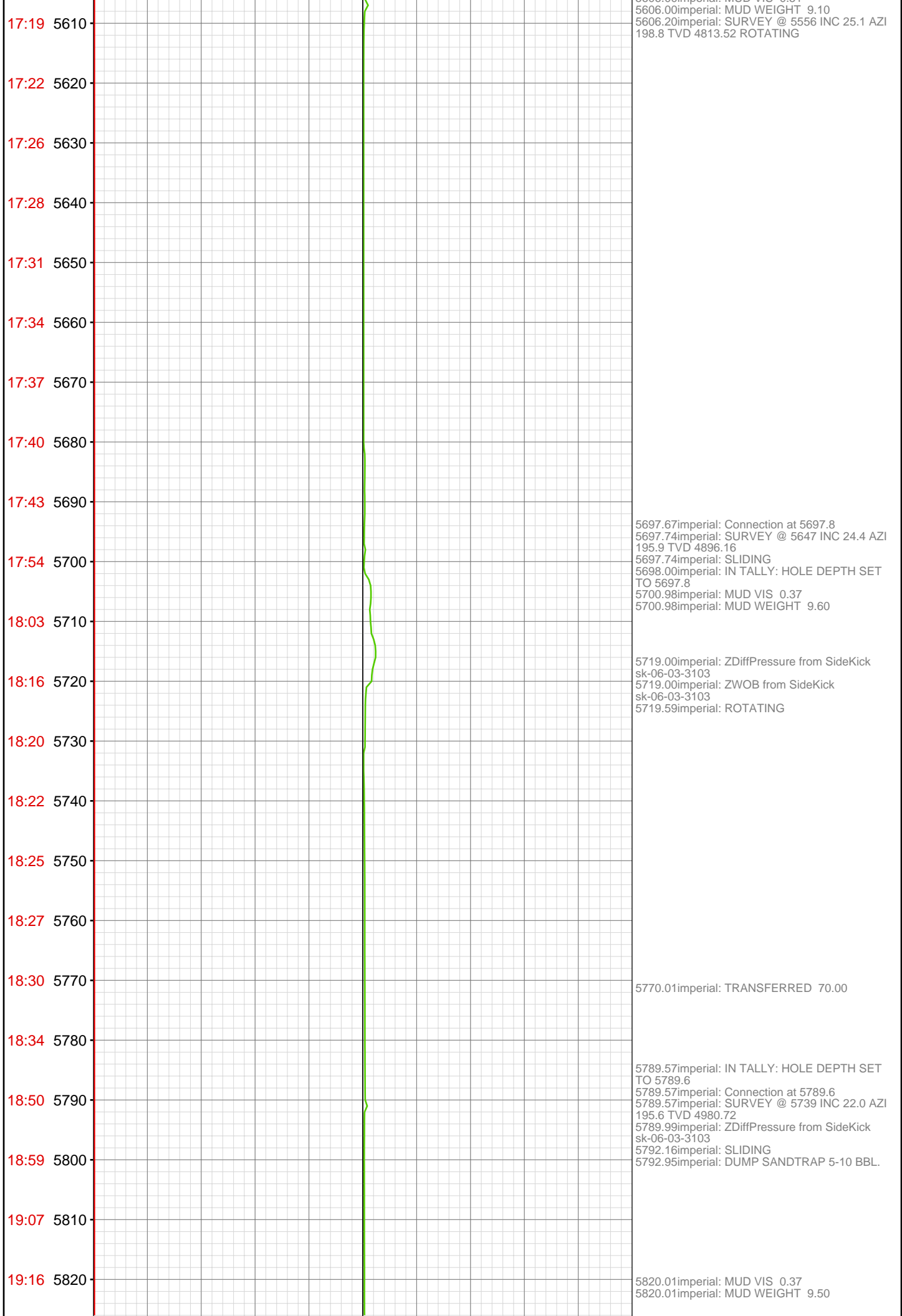
17:10 5600

5422.11imperial: Connection at 5422.8
5422.77imperial: IN TALLY: HOLE DEPTH SET
TO 5422.8
5422.77imperial: SURVEY @ 5372 INC 28.1 AZI
198.9 TVD 4648.94
5423.82imperial: ROTATING

5454.00imperial: MUD VIS 0.42
5454.00imperial: MUD WEIGHT 9.10

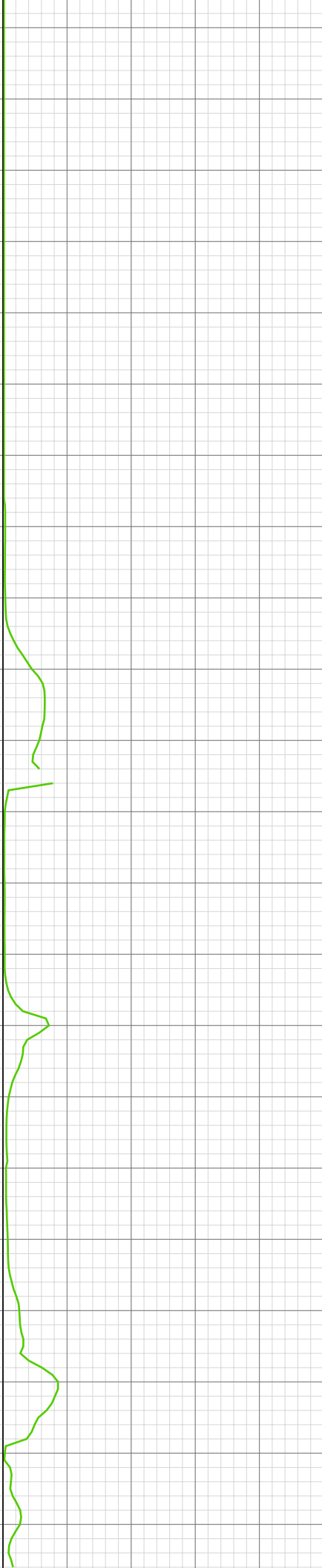
5514.57imperial: RIG SERVICE
5514.57imperial: ROTATING
5514.57imperial: SURVEY @ 5464'/ 26.5 INC/
199.8 AZM/ 4730.7 TVD

5604.79imperial: Connection at 5606.1
5606.00imperial: MUD VIS 0.51



19:26	5830	5831.00imperial: ZDiffPressure from SideKick sk-06-03-3103 5835.37imperial: ROTATING
19:32	5840	5845.01imperial: MUD WEIGHT 9.80
19:34	5850	5852.99imperial: ZERO ALL PUMPS from SideKick sk-05-05-1268
19:37	5860	
19:39	5870	
19:44	5880	5881.00imperial: ZDiffPressure from SideKick sk-06-03-3103 5881.27imperial: IN TALLY: HOLE DEPTH SET TO 5881.3 5881.27imperial: SURVEY @ 5831 INC 18.7 AZI 202 TVD 5066.97 Connection at 5881.3 5881.27imperial: SLIDING 5886.55imperial: DEWATER 50 GPM 5890.35imperial: MAKE UP 35 GPM
20:02	5890	
20:07	5900	
20:15	5910	5908.01imperial: MUD VIS 0.39 5908.01imperial: MUD WEIGHT 9.65
20:22	5920	5922.01imperial: ZWOB from SideKick sk-06-03-3103 5922.01imperial: ZDiffPressure from SideKick sk-06-03-3103 5922.77imperial: ZDiffPressure from SideKick sk-06-03-3103 5927.00imperial: ZERO ALL PUMPS from SideKick sk-05-05-1268
20:43	5930	
20:50	5940	5940.12imperial: WILLIAMS FORK TOP 50/50STKS 10-15RT 10K
20:59	5950	5952.00imperial: ZDiffPressure from SideKick sk-06-03-3103 5952.00imperial: PUMP 2 OFFLINE
21:14	5960	
21:22	5970	5972.80imperial: Connection at 5972.8 5972.80imperial: MUD WEIGHT 9.40 5972.80imperial: SURVEY @ 5922 INC 15.5 AZI 202.1 TVD 5153.94 5972.80imperial: SLIDING 5972.80imperial: SLIDING 5973.00imperial: IN TALLY: HOLE DEPTH SET TO 5972.8 5973.00imperial: MUD VIS 0.38 5973.00imperial: ZDiffPressure from SideKick sk-06-03-3103
21:43	5980	
21:50	5990	
21:56	6000	
22:02	6010	6014.01imperial: MUD VIS 0.45 6014.96imperial: MUD WEIGHT 9.50
22:08	6020	6024.02imperial: ZWOB from SideKick sk-06-03-3103 6024.93imperial: ROTATING 6024.93imperial: ZDiffPressure from SideKick sk-06-03-3103
22:17	6030	
22:20	6040	

22:22 6050
22:26 6060
22:47 6070
23:01 6080
23:07 6090
23:14 6100
23:19 6110
23:27 6120
23:32 6130
23:38 6140
23:42 6150
23:50 6160
May 14, 2010
00:11 6170
00:20 6180
00:30 6190
00:36 6200
00:48 6210
00:53 6220
00:59 6230
01:04 6240
01:22 6250
01:34 6260



6064.37imperial: SURVEY @ 6014 INC 10.9 AZI
205.8 TVD 5243.49
6064.37imperial: SLIDING
6064.37imperial: Connection at 6064.4
6064.99imperial: IN TALLY: HOLE DEPTH SET
TO 6064.4
6064.99imperial: ZDiffPressure from SideKick
sk-06-03-3103
6070.01imperial: ZDiffPressure from SideKick
sk-06-03-3103

6116.01imperial: ZDiffPressure from SideKick
sk-06-03-3103
6116.40imperial: ROTATING
6116.99imperial: MUD VIS 0.40
6116.99imperial: MUD WEIGHT 9.45

6154.99imperial: IN TALLY: HOLE DEPTH SET
TO 6155.9
6154.99imperial: ZDiffPressure from SideKick
sk-06-03-3103
6155.91imperial: SURVEY @ 6105 INC 7.3 AZI
215.1 TVD 5333.33
6155.91imperial: Connection at 6155.9 SLIDING

6169.00imperial: MUD VIS 0.42
6169.00imperial: MUD WEIGHT 9.40

6208.01imperial: ZERO ALL PUMPS from
SideKick sk-05-05-1268
6208.01imperial: ZWOB from SideKick
sk-06-03-3103
6208.46imperial: ROTATING

6247.61imperial: Connection at 6247.6
6247.61imperial: SURVEY @ 6197 INC 3.9 AZI
213.1 TVD 5424.88
6248.00imperial: IN TALLY: HOLE DEPTH SET
TO 6247.6
6248.00imperial: ZDiffPressure from SideKick
sk-06-03-3103
6248.13imperial: SLIDING

6260.04imperial: MAKE UP WATER 35 GPM

