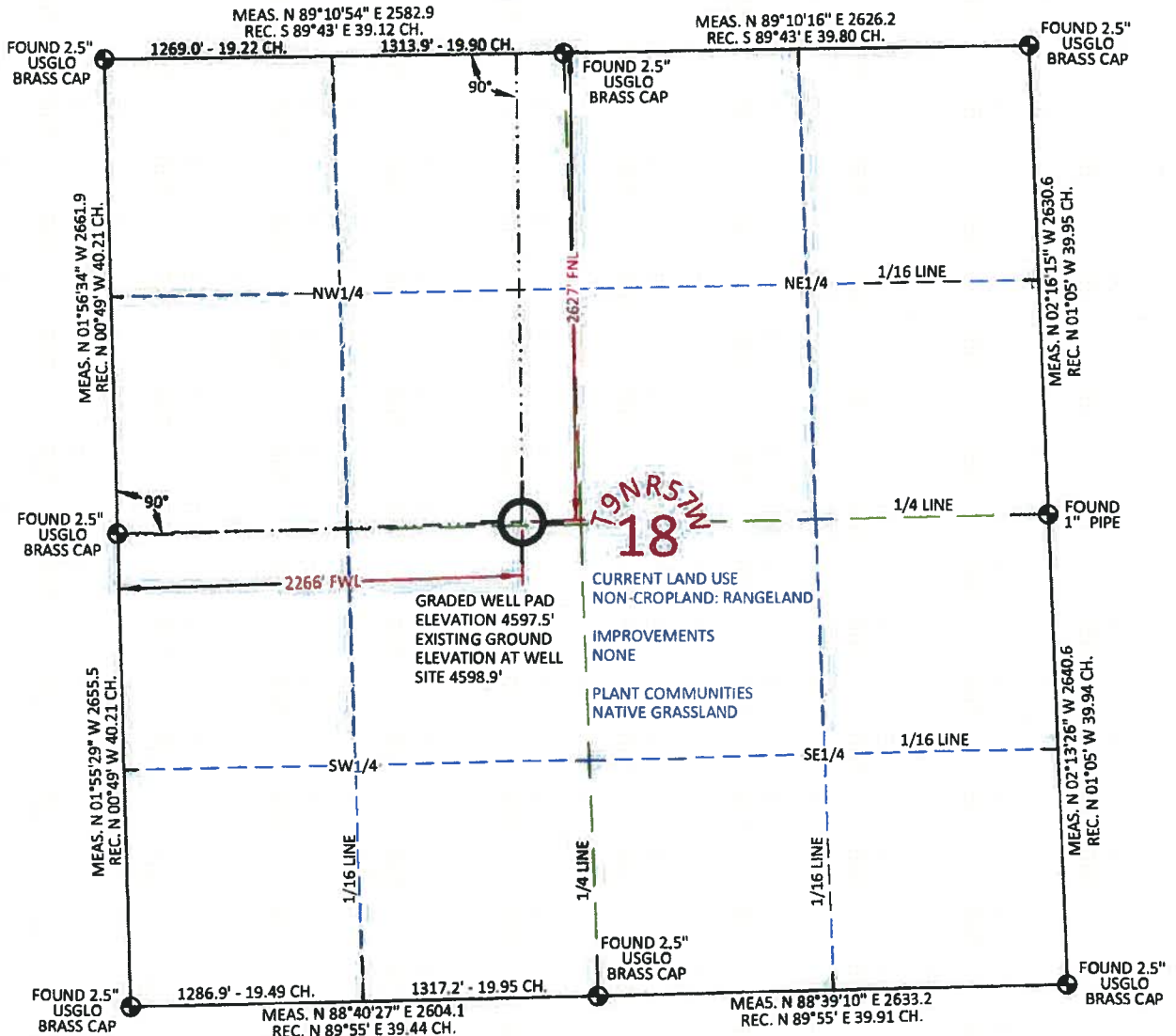


MARATHON PAWNEE CREEK 9-57-18-1M

LOCATED WITHIN THE SE1/4 NW1/4 SECTION 18 T9N R57W
OF THE 6TH P.M., WELD COUNTY, COLORADO



MONITOR WELL LOCATION

LAT.	40.751641°
LONG.	103.794480°
LAT.	40.751655°
LONG.	103.793977°
LAT.	40°45'05.91"
LONG.	103°47'40.13"
LAT.	40°45'05.96"
LONG.	103°47'38.32"
NORTH	1521212.13
EAST	3472511.86
NORTH	521210.75
EAST	2472663.74

FOOTAGE: 2266' FWL - 2627' FNL

GROUND ELEV. 4598.9'

INST. OPTR. ADAM HARMON

MEASURE DATE: 04/20/2011

PDOP: 1.5

I, William H. Dolinar, Professional Land Surveyor, CO. RLS # 38070 hereby certify that (In accordance with a request from Anna Walls with Marathon Oil Co, 5555 San Felipe, Houston, TX 77056) I and or personnel under my direction made a survey on the 20th day of April 2011, for the Monitoring Well Location and Elevation of Marathon Oil Co. Pawnee Creek 9-57-18-1M being located within the SE1/4 NW1/4 Section 18, T9N R57W, of the 6th P.M., Weld County, State of Colorado.

- All bearings and distances are GRID based on the Colorado State Plane Coordinate System, North Zone, North American Datum 1983 from GPS observations occupying a WHS control point (5/8" rebar) and having the Location and Elevation derived from an Opus Solution.
- Vertical Datum used is of NAVD 88.
- Record Bearings and Distances as shown are based on the General Land Office Survey plat approved on the 18th day of September 1918.

CONFIDENTIALITY NOTES:

The information contained in this plot is legally privileged and confidential information intended only for the use of the recipients. If you are not the intended recipients, you are hereby notified that any use, dissemination, distribution or copying of this information is strictly prohibited.



WILLIAM H. SMITH & ASSOCIATES P.C.
SURVEYING CONSULTANTS
150 EAST SECOND NORTH PHONE: 307-875-3638
GREEN RIVER, WY 307-875-3639
www.williamsmithpc.com

DRAWN BY: DTW	CHECKED BY: WHD
PROJECT NO: 957181M	JOB NO: 2011001
REVISIONS: WELL LOCATION 06/02/2011	

LEGEND

- FOUND CORNER
- ⊗ CALCULATED CORNER
- NOTHING FOUND

LOCATION:

PAWNEE CREEK
9-57-18-1M
WITHIN THE SE/4
NW/4 SECTION 18,
T 9 N, R 57 W,
6TH P.M.
WELD COUNTY,
COLORADO

MARATHON OIL COMPANY
PO BOX 3128, HOUSTON TX, 77253
5555 SAN FELIPE, HOUSTON TX, 77056

MONITORING WELL PLAT

SCALE: 1"=1000'	EXHIBIT "A"
DATE: 04/20/2011	SHEET 1 OF 1