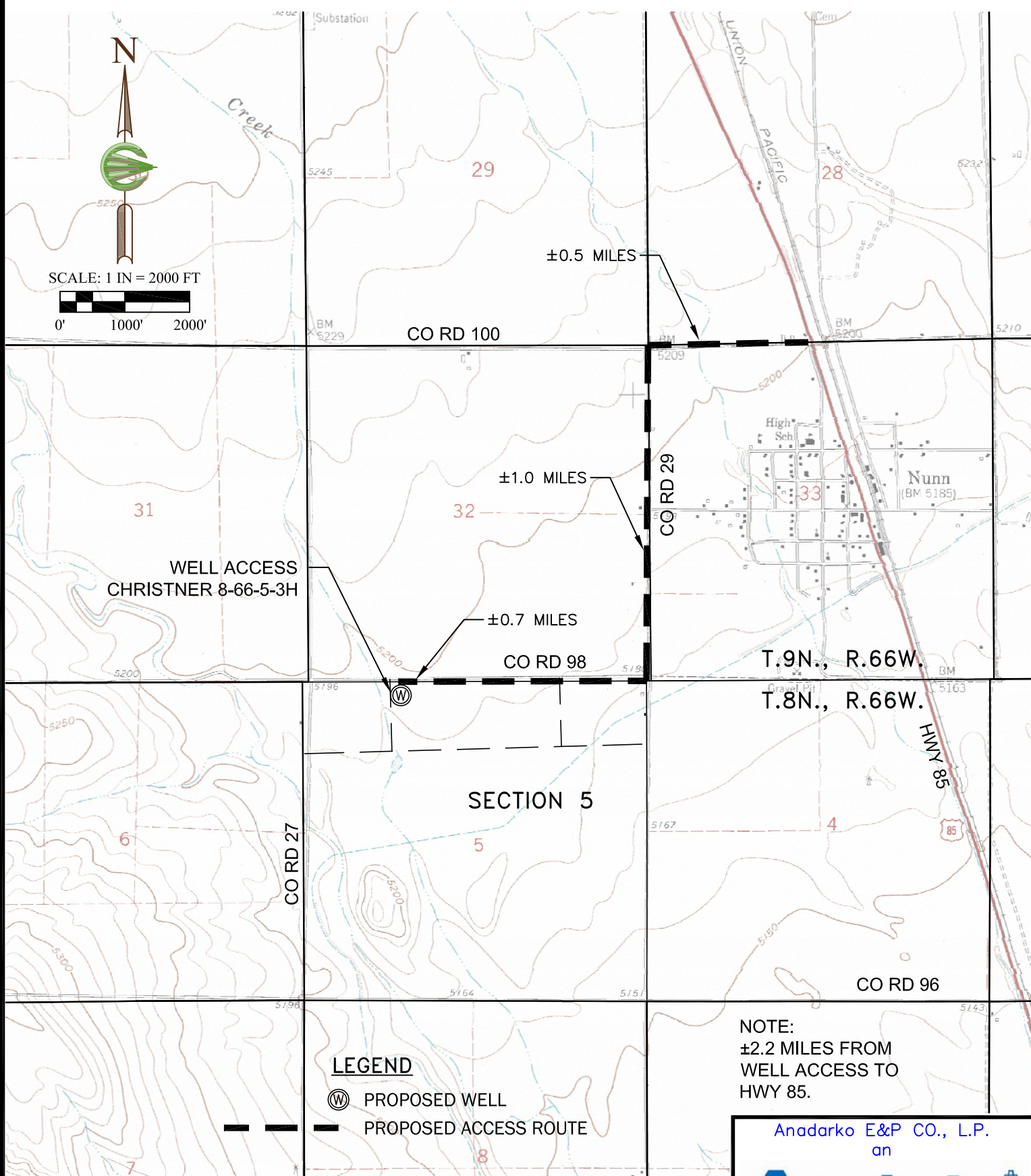
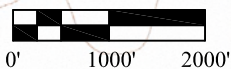




SCALE: 1 IN = 2000 FT



LEGEND



PROPOSED WELL



PROPOSED ACCESS ROUTE

NOTE:
±2.2 MILES FROM
WELL ACCESS TO
HWY 85.

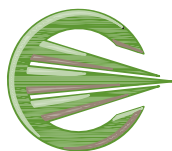
Anadarko E&P CO., L.P.
an



1099 18th Street
Denver, CO 80202

Project: 1715.07
Drafted By: RLB
Date: 03/11/11

Sheet:
3 / 5



COFFEY
ENGINEERING & SURVEYING

902 S. 3rd St., Laramie, WY 82070
[P] 307-742-7425 [F] 307-742-7403

ACCESS MAP

250' FNL & 1680' FWL (WELL)
600' FSL & 1289' FWL (BOTTOM HOLE)
WELL PAD: CHRISTNER 8-66-5-3H
SEC. 5, T8N, R66W, 6TH P.M.
WELD COUNTY, COLORADO