

WELL LOCATION CERTIFICATE

THIS MAP DOES NOT REPRESENT A BOUNDARY SURVEY

SECTIONS 22 & 27
TOWNSHIP 3 NORTH
RANGE 64 WEST

3/4" ALUMINUM CAP
(LS 37068)

2 1/2" ALUMINUM CAP
(LS 23501)

IN ACCORDANCE WITH A REQUEST FROM BRIAN DORSE - NOBLE ENERGY INC. STELL SURVEYING SERVICES, LLC HAS DETERMINED THE LOCATION OF THE RHINO D27-27D WELL TO BE 2590' FSL, 2583' FWL, AS MEASURED AT NINETY (90) DEGREES FROM THE SECTION LINES, SECTION 27, TOWNSHIP 3 NORTH, RANGE 64 WEST, 6TH PRINCIPLE MERIDIAN, WELD COUNTY, COLORADO.

I HEREBY CERTIFY THAT THIS WELL LOCATION CERTIFICATE WAS PREPARED BY ME, OR UNDER MY DIRECT SUPERVISION, THAT THE FIELD WORK WAS COMPLETED ON 03/11/2011, FOR AND ON BEHALF OF NOBLE ENERGY INC, THAT IT IS NOT A LAND SURVEY PLAT OR AN IMPROVEMENT SURVEY PLAT, AND THAT IT IS NOT TO BE RELIED UPON FOR ESTABLISHMENT OF FENCE, BUILDING, OR OTHER FUTURE IMPROVEMENT LINES.

NOTES:

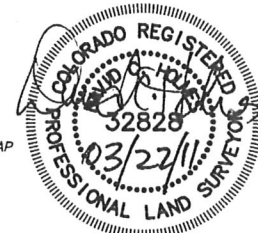
- 1) BASIS OF BEARINGS FOR THIS MAP ARE BASED UPON GPS OBSERVATIONS MADE ON 03/09/2011 BETWEEN MONUMENTS LOCATED AT THE SOUTHEAST SECTION CORNER AND THE NORTHEAST SECTION CORNER OF SAID SECTION AND WITH ALL BEARINGS SHOWN HEREON RELATIVE THERETO.
- 2) COORDINATES SHOWN ARE COLORADO STATE PLANE (NORTH ZONE) NAD 83
- 3) ELEVATIONS ARE BASED UPON NGS OPUS SOLUTION NAVD 88 DATUM.
- 4) THE NEAREST EXISTING WELL IS: CAMOLO RED D27-6, 987' NORTHWEST.
- 5) SEE LOCATION DRAWING FOR ALL IMPROVEMENTS WITHIN VISIBLE IMPROVEMENT LIMIT.
- 6) THE LOCATION FALLS IN PASTURE LAND.

LATITUDE & LONGITUDE (NAD 83
SURFACE HOLE):
LATITUDE: N 40.19623°
LONGITUDE: W 104.53774°
PDOP: 1.7
QUARTER-QUARTER: NE/4SW/4
NEAREST PROPERTY LINE: 2583' WEST



0 1000

Scale: 1" = 1000'



NOTICE: According to Colorado law you MUST commence any legal action based upon any defect in this W.L.C. within three years after you first discover such defect. In no event may any action based upon any defect in this W.L.C. be commenced more than ten years from this said date of the certification shown hereon.

LEGEND

- (A) FOUND SURVEY MONUMENT PER MONUMENT RECORD - EXCEPTIONS NOTED.
- (C) CALCULATED DIMENSION

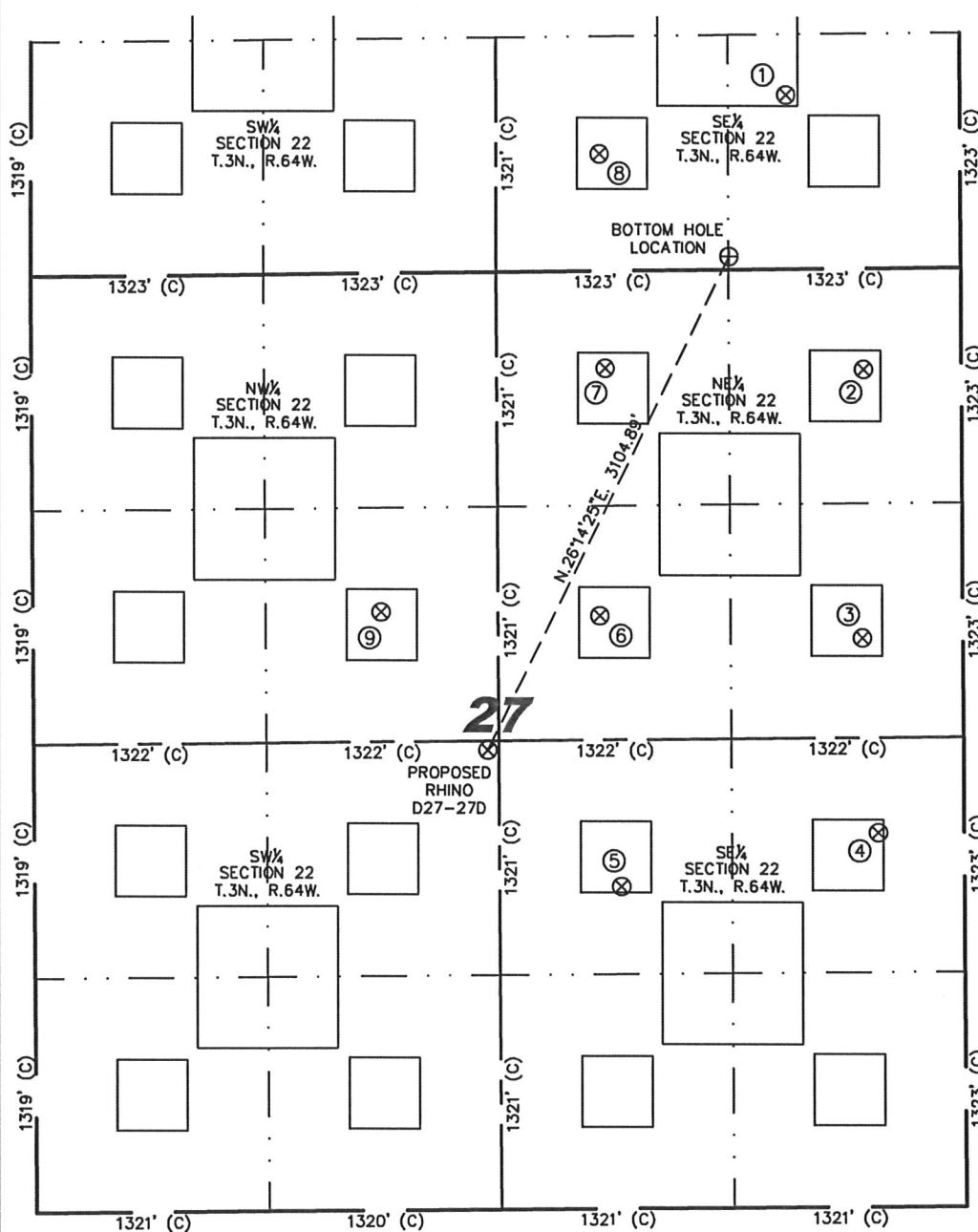
David C. Holmes
Professional Land Surveyor Registration No. 32828
State of Colorado

JOB #: 11086

Completed 3/21/2011

SITE SKETCH - RHINO D27-27D

SECTION 27
TOWNSHIP 3 NORTH
RANGE 64 WEST



- | | |
|--|---|
| ①
SPIKE STATE
GWS D22-4J
SE/SE SEC. 22
981' FSL
991' FEL
EL 4835'
N 40.20632
W 104.53152
PDOP 2.4 | ②
KYLE WHITE
D27-1
NE/NE SEC. 27
569' FNL
556' FEL
EL 4844'
N 40.20207
W 104.53000
PDOP 2.3 |
| ③
KYLE WHITE
D27-08
SE/NE SEC. 27
2082' FNL
572' FEL
EL 4881'
N 40.19791
W 104.53009
PDOP 2.0 | ④
KYLE WHITE
D27-9
NE/SE SEC. 27
2108' FSL
488' FEL
EL 4871'
N 40.19489
W 104.52981
PDOP 1.9 |
| ⑤
ESTES D27-10
NW/SE SEC. 27
1815' FSL
1950' FEL
EL 4874'
N 40.19410
W 104.53505
PDOP 2.0 | ⑥
ESTES D27-7
SW/NE SEC. 27
1942' FNL
2065' FEL
EL 4853'
N 40.19829
W 104.53543
PDOP 2.0 |
| ⑦
KYLE WHITE
D27-2
NW/NE SEC. 27
547' FNL
2027' FEL
EL 4847'
N 40.20212
W 104.53526
PDOP 2.4 | ⑧
SPIKE STATE
GWS D22-15
SW/SE SEC. 22
659' FSL
2055' FEL
EL 4832'
N 40.20543
W 104.53534
PDOP 2.2 |
| ⑨
CAMOLO RED
D27-6
SE/NW SEC. 27
1908' FNL
1981' FWL
EL 4855'
N 40.19838
W 104.53988
PDOP 1.9 | |

NOTES:

- 1) THIS SKETCH DOES NOT REPRESENT A BOUNDARY SURVEY.
- 2) THE DATUM FOR THE LATITUDES AND LONGITUDES ON THIS SKETCH IS NAD83.

