

EOG RESOURCES, INC.
IGO CREEK #22-28H
LOCATED IN WELD COUNTY, COLORADO
SECTION 28, T9N, R59W, 6th P.M.

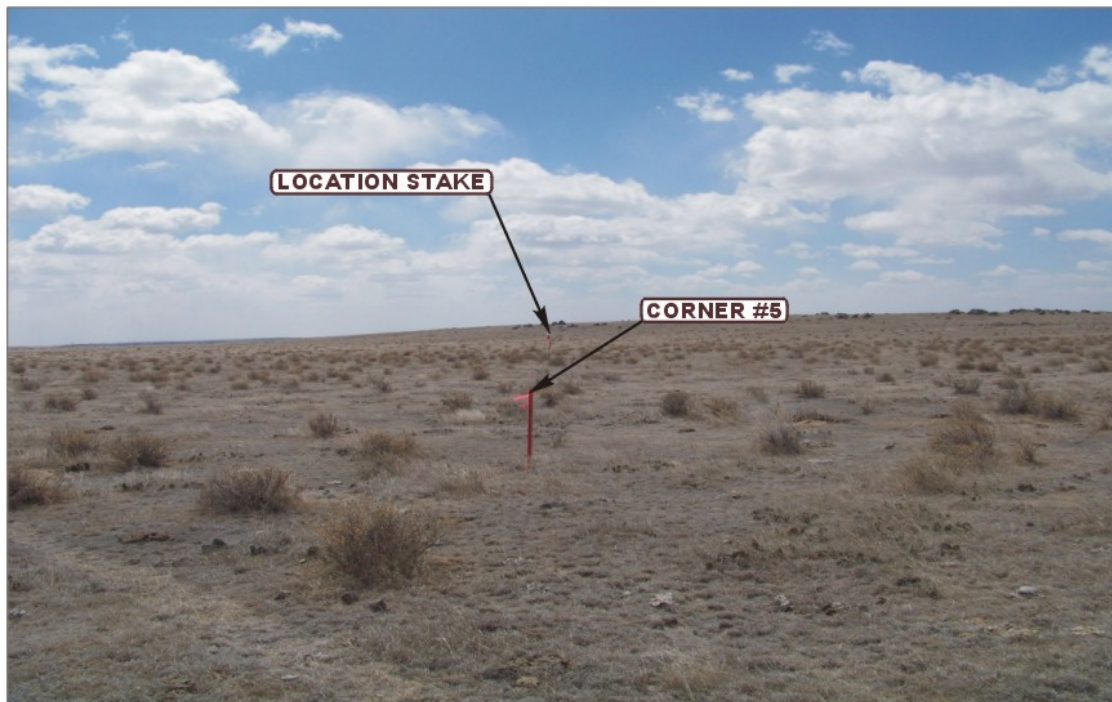


PHOTO: VIEW FROM CORNER #5 TO LOCATION STAKE

CAMERA ANGLE: SOUTHERLY



PHOTO: VIEW FROM BEGINNING OF PROPOSED ACCESS

CAMERA ANGLE: WESTERLY



UELS

Uintah Engineering & Land Surveying
85 South 200 East Vernal, Utah 84078
(435) 789-1017 * FAX (435) 789-1813

LOCATION PHOTOS

01 **14** **11**
MONTH DAY YEAR

TAKEN BY: J.H.

DRAWN BY: S.F.

REVISED: 04-27-11

PHOTO
P1

EOG RESOURCES, INC.
IGO CREEK #22-28H
LOCATED IN WELD COUNTY, COLORADO
SECTION 28, T9N, R59W, 6th P.M.



PHOTO: VIEW OF LOCATION STAKE

CAMERA ANGLE: NORTHERLY



PHOTO: VIEW OF LOCATION STAKE

CAMERA ANGLE: EASTERLY



UELS Uintah Engineering & Land Surveying
85 South 200 East Vernal, Utah 84078
(435) 789-1017 * FAX (435) 789-1813

LOCATION PHOTOS

01 **14** **11**
MONTH DAY YEAR

PHOTO
P2

TAKEN BY: J.H.

DRAWN BY: S.F.

REVISED: 04-27-11

EOG RESOURCES, INC.
IGO CREEK #22-28H
LOCATED IN WELD COUNTY, COLORADO
SECTION 28, T9N, R59W, 6th P.M.



PHOTO: VIEW OF LOCATION STAKE

CAMERA ANGLE: SOUTHERLY



PHOTO: VIEW OF LOCATION STAKE

CAMERA ANGLE: WESTERLY



UELS Uintah Engineering & Land Surveying
85 South 200 East Vernal, Utah 84078
(435) 789-1017 * FAX (435) 789-1813

LOCATION PHOTOS

01 **14** **11**
MONTH DAY YEAR

PHOTO
P3

TAKEN BY: J.H.

DRAWN BY: S.F.

REVISED: 04-27-11