

SURVEYOR'S STATEMENT

I, Ronald C. Rennke, an employee and agent on behalf of D.R. GRIFFIN & ASSOCIATES, INC. state the plat hereon is a correct representation of a survey made under my supervision on May 17, 2011 of the shown DOUBLE B RANCH 18-43D and that the location has been staked on the ground as shown on the plat.

NOTES

1. GPS OPERATOR RON RENNKE OBSERVED A PDOP OF 1.7.
2. ALL GPS OBSERVATIONS ARE IN ALL GPS OBSERVATIONS ARE IN COMPLIANCE WITH COGCC RULE NO. 215.
3. IMPROVEMENTS WITHIN 400' RADIUS OF WELL SITE. SEE EXHIBIT 1B.
4. SURROUNDING SURFACE USE IS NON-CROP RANGELAND & NATIVE WOODS.



COLORADO PLS No. 37065

17M PAD

DRG **RIFFIN & ASSOCIATES, INC.**
(307) 362-5028 1414 ELK ST., ROCK SPRINGS, WY 82901

DATE DRAWN: 5/17/11 RCR

SCALE: 1" = 1000'

REVISED: NA

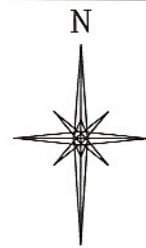
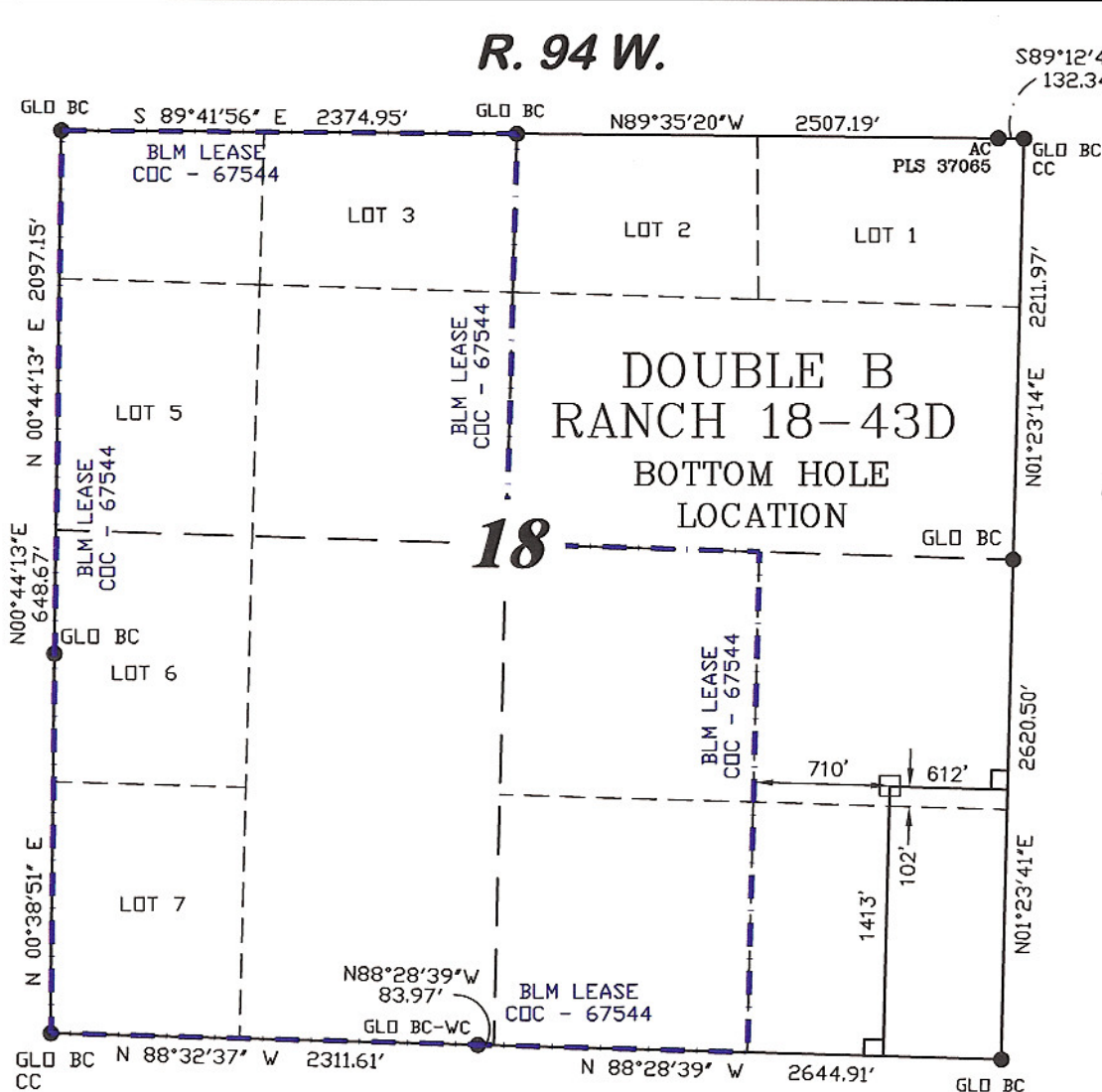
JOB No. 15454

EXHIBIT 1

**PLAT OF DRILLING LOCATION
SWSW OF SECTION 17
FOR NOBLE ENERGY, INC.**

**628' F/SL & 470' F/WL, SECTION 17,
T. 7 S., R. 94 W., 6th P.M.
GARFIELD COUNTY, COLORADO**

R. 94 W.



500 0 1000

SCALE: 1" = 1000'

T. 7 S.

BHL LATITUDE (NAD 83)

NORTH 39.435617 DEG.

BHL LONGITUDE (NAD 83)

WEST 107.921649 DEG.

BHL NORTHING (NAD 83)

1592669 FEET

BHL EASTING (NAD83)

2316104 FEET

BASIS OF BEARING

SPCS CO CENTRAL NAD
27, BASED ON NGS TRIG.

STATION "FABER"

THE BASIS OF BEARINGS FOR
THIS SURVEY IS REFERENCED
TO THE SOUTH LINE OF THE
SW $\frac{1}{4}$ OF SECTION 17, BEING
MONUMENTED WITH GLO BC'S
AND BEARING N 88° 30' 06" W.

LEGEND

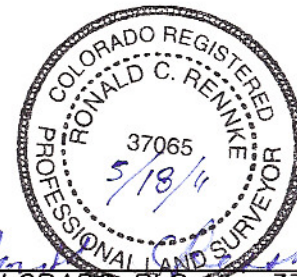
- ◆ WELL LOCATION
- FOUND MONUMENT
- L DENOTES 90° TIE
- CALCULATED CORNER
- APPROXIMATE BHL

SURVEYOR'S STATEMENT

I, Ronald C. Rennke, an employee and agent on behalf of D.R. GRIFFIN & ASSOCIATES, INC. state the plat hereon is a correct representation of a survey made under my supervision on May 17, 2011 of the shown DOUBLE B RANCH 18-43D Bottom Hole Location.

NOTES

1. GPS OPERATOR RON RENNKE OBSERVED A PDOP OF 1.7.
2. ALL GPS OBSERVATIONS ARE IN ALL GPS OBSERVATIONS ARE IN COMPLIANCE WITH COGCC RULE NO. 215.
3. IMPROVEMENTS WITHIN 400' RADIUS OF WELL SITE. SEE EXHIBIT 1B.
4. SURROUNDING SURFACE USE IS NON-CROP RANGELAND & NATIVE WOODS.



COLORADO PLS No. 37065

17M PAD



RIFFIN & ASSOCIATES, INC.

(307) 362-5028

1414 ELK ST., ROCK SPRINGS, WY 82901

DATE DRAWN: 5/17/11 RCR

SCALE: 1" = 1000'

REVISED: NA

JOB No. 15454

EXHIBIT 1

**PLAT OF BOTTOM HOLE LOCATION
SHL IN SWSW OF SECTION 17
FOR NOBLE ENERGY, INC.**

**1413' F/SL & 612' F/EL, SECTION 18,
T. 7 S., R. 94 W., 6th P.M.
GARFIELD COUNTY, COLORADO**