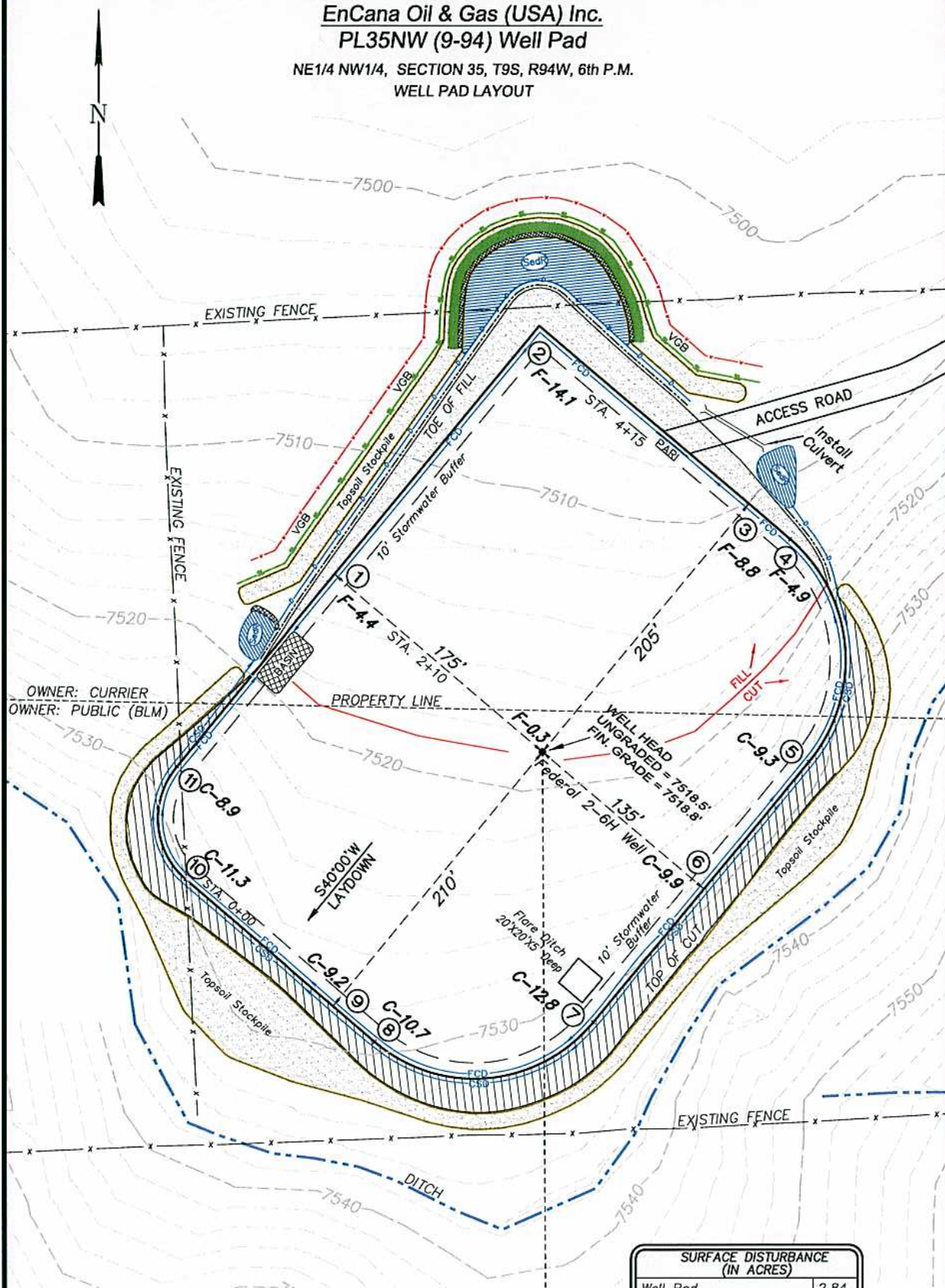


EnCana Oil & Gas (USA) Inc.
PL35NW (9-94) Well Pad

NE1/4 NW1/4, SECTION 35, T9S, R94W, 6th P.M.
WELL PAD LAYOUT



Total Surface Disturbance = 4.37 Acres
Currier Land = 2.11 Acres
Public (BLM) Land = 2.26 Acres
(See Sheet 4 for additional details)

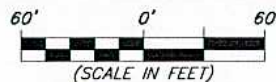
NOTES:

- (1) Slope Track and/or Terrace all Slopes and Piles
- (2) Erosion Control & Seed Topsoil
- (3) Erosion Control & Seed Outside
- (4) Slope away from Substructure Areas 1% to 3% to Flow Control

LEGEND:

- ST = SEDIMENT TRAP
- SedR = SEDIMENT RESERVOIR
- R.O.D. = RUN-ON DIVERSION
- W = PERIMETER CONTROL (WATTLES)
- CSD = CUT SLOPE DIVERSION (BERM TOE OF CUT SLOPE)
- D = FILL DIVERSION TO SEDIMENT TRAP
- VOB = VEGETATION BUFFER (UNDISTURBED LAND INSIDE PC)
- FCD = FLOW CONTROL DITCH
- PARI = PAD/ACCESS ROAD INTERFACE
- Level Spreader
- TOE BERM (PLACED AT TOE OF ALL FILL SLOPES/STOCKPILES)
- TOPSOIL BERM
- SEED, ECB & FLEX

SURFACE DISTURBANCE (IN ACRES)	
Well Pad	2.84
Side Slopes	0.51
Stockpiles & Stormwater	1.02
TOTAL	4.37



906 Main Street
Evanston, Wyoming 82930
Phone No. (307) 789-4545

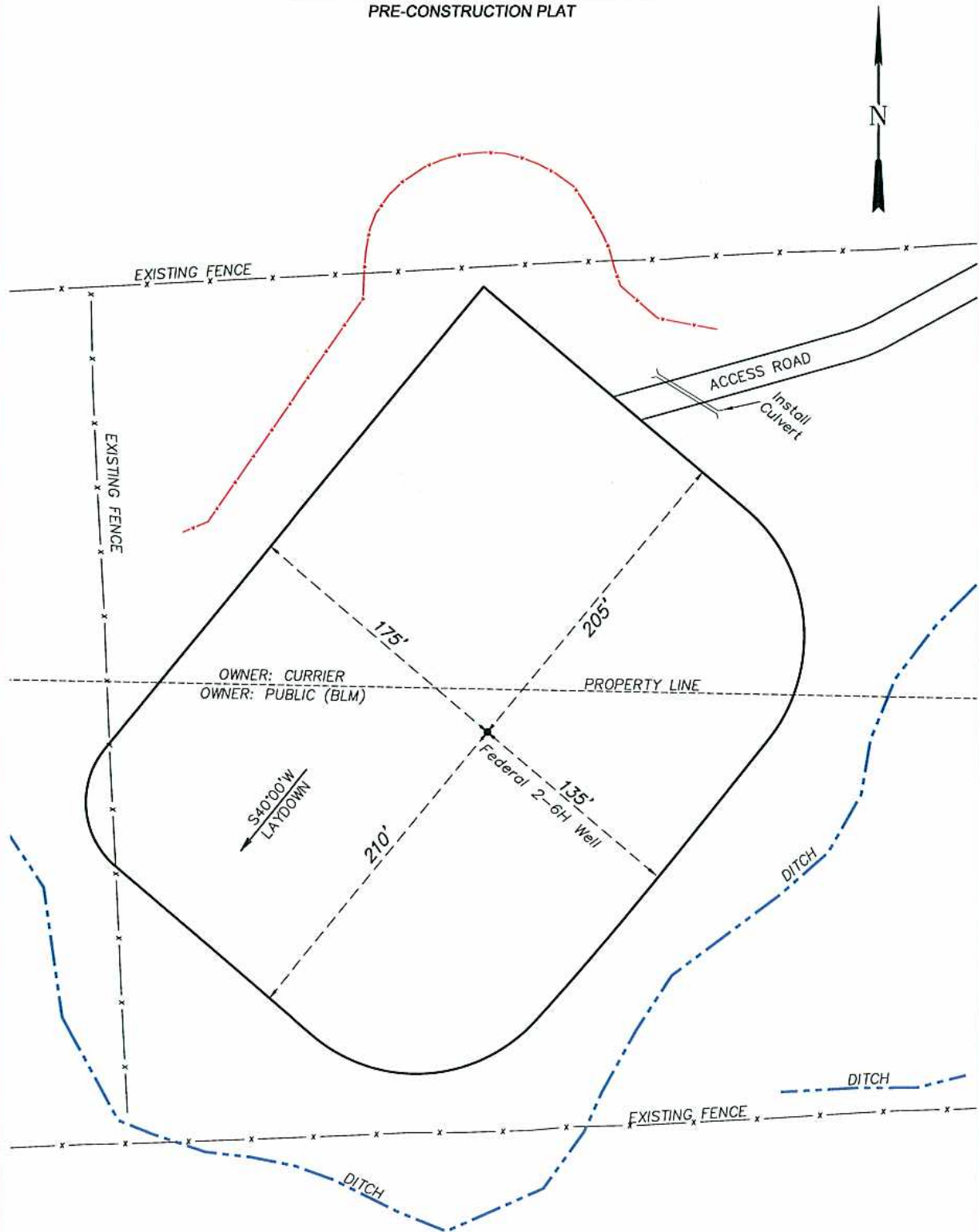
Well Pad Layout		Scale: 1" = 60'	SHEET
Project No.	10-04-80	Date Surveyed:	1/18/11
Date	5/31/11	Latest Revision	
Drawn:		Date:	
			3 OF 10

EnCana Oil & Gas (USA) Inc.

PL35NW (9-94) Well Pad

NE1/4 NW1/4, SECTION 35, T9S, R94W, 6th P.M.

PRE-CONSTRUCTION PLAT



Total Surface Disturbance = 4.37 Acres
(See Sheet 4 for Details)

- NOTES:
- (1) Slope Track and/or Terrace oil Slopes and Piles
 - (2) Erosion Control & Seed Topsoil
 - (3) Erosion Control & Seed Outside
 - (4) Slope away from Substructure Areas 1% to 3% to Flow Control

- LEGEND
- SLASH
 - ST = SEDIMENT TRAP
 - SedR = SEDIMENT RESERVOIR
 - R.O.D. = RUN-ON DIVERSION
 - PERMETER CONTROL (WATTLES)
 - CSD = CUT SLOPE DIVERSION (BERM TOE OF CUT SLOPE)
 - D = FILL DIVERSION TO SEDIMENT TRAP
 - VGB = VEGETATION BUFFER (UNDISTURBED LAND INSIDE PC)
 - FCD = FLOW CONTROL DITCH
 - PARI = PAD/ACCESS ROAD INTERFACE
 - LEVEL SPREADER
 - TOE BERM (PLACED AT TOE OF ALL FILL SLOPES/STOCKPILES)
 - TOPSOIL BERM
 - SEED, ECB & FLEX

PRE-CONSTRUCTION PHASE COMPLETE,
AUTHORIZATION TO CONTINUE
CONSTRUCTION.

SIGNATURE: _____

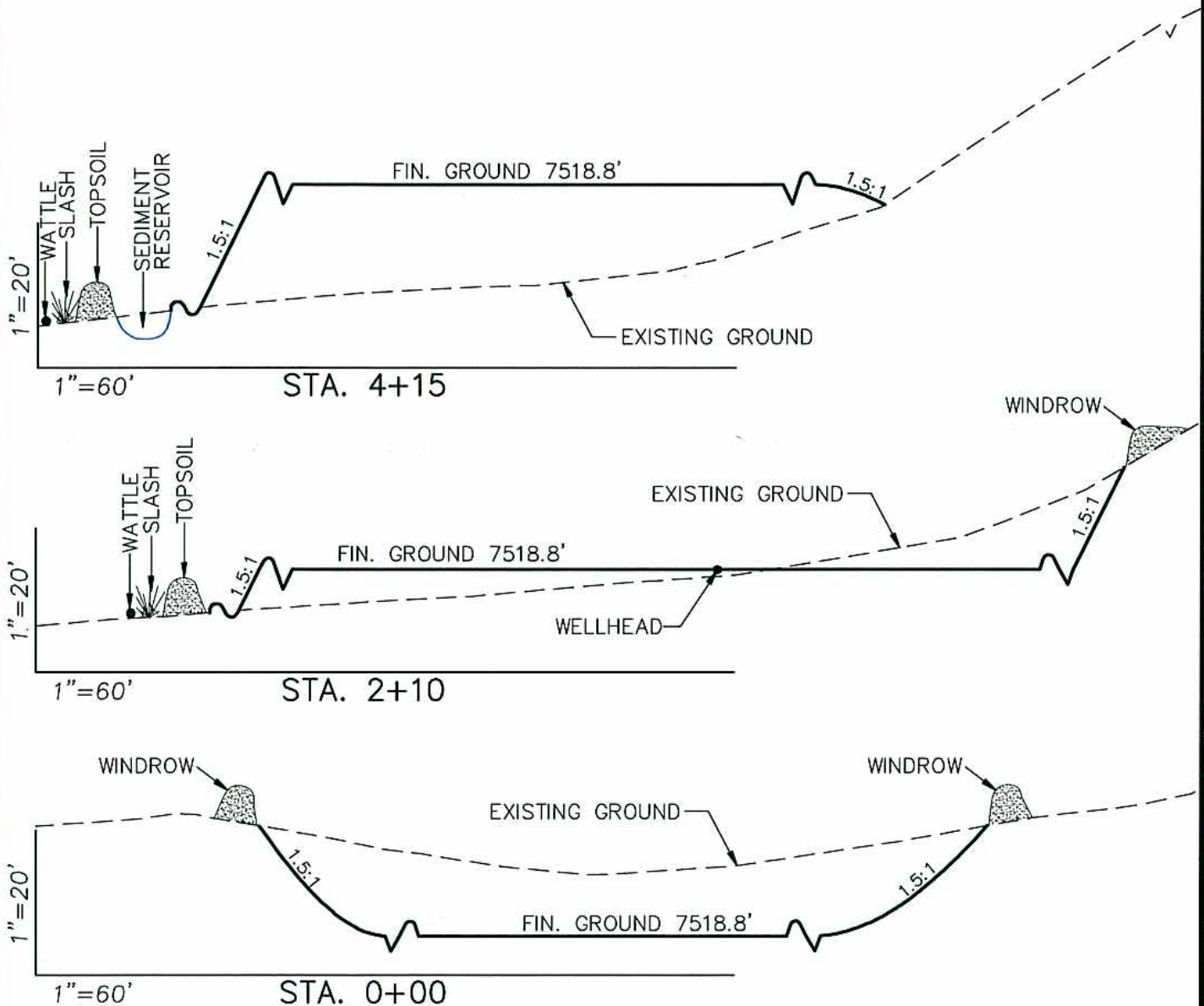


906 Main Street
Evanston, Wyoming 82930
Phone No. (307) 789-4545



Pre-Construction		Scale: 1" = 60'	SHEET 3a OF 10
Project No.	10-04-80	Date Surveyed: 1/18/11	
Date Drawn: 5/31/11		Latest Revision	
		Date:	

EnCana Oil & Gas (USA) Inc.
PL35NW (9-94) Well Pad
CROSS SECTIONS



**SURFACE DISTURBANCE
(IN ACRES)**

Well Pad	2.84
Side Slopes	0.51
Stockpiles & Stormwater	1.02
TOTAL	4.37

NOTE:
 ALL CUT AND FILL
 SLOPES ARE AT 1.5:1
 UNLESS OTHERWISE
 NOTED.

EARTHWORK QUANTITIES

(in Cubic Yards w/ 0% shrink/swell)

ITEM	CUT	FILL	6" TOPSOIL	EXCESS
PAD	15359	14349	Topsoil not included in Excavation	1010
PIT	0	0		0
TOTALS	15359	14349	2702	1010



906 Main Street
 Evanston, Wyoming 82930
 Phone No. (307) 789-4545

Cross Sections

Project No. 10-04-80
 Date Drawn: 5/31/11

Scale: As Shown

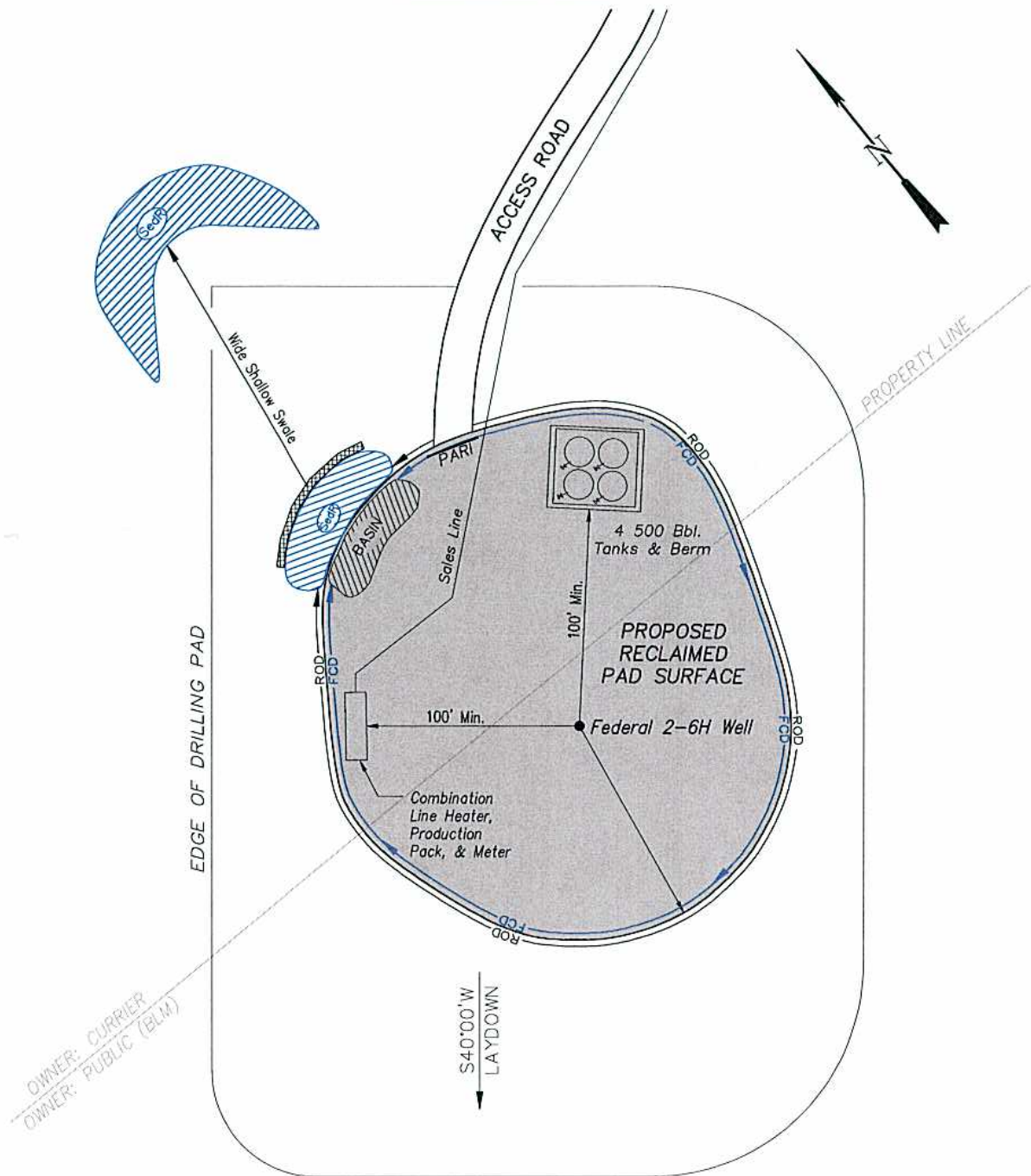
Date Surveyed: 1/18/11
 Latest Revision Date:

SHEET

4

OF 10

EnCana Oil & Gas (USA) Inc.
PL35NW (9-94) Well Pad
PRODUCTION SCHEMATIC



NOTES:

1. Set Tanks High so pad Entrance & Tank Area Can Drain to Pad Basin
2. Gravel Pad 75' from Wells & Around Tanks and Separators
3. Pad Drains to Pad Basin at a 3% to 5% slope
4. BMP Selection and Position may change Depending on Actual Conditions Encountered During the Construction Process

NOTE:

Actual Equipment Layout and Reclaimed Pad Surface Area May Change due to Production Requirements or Site Conditions.

ESTIMATED AREAS
 RECLAIMED AREA: 3.37 ACRES
 UNRECLAIMED AREA: 1.00 ACRES

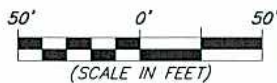
 CARRIER = 0.50 ACRES
 BLM = 0.50 ACRES

LEGEND:

SedR = SEDIMENT RESERVOIR
 R.O.D. = RUN-ON DIVERSION
 -W- = PERIMETER CONTROL (WATILES)
 CSD = CUT SLOPE DIVERSION (BERM TOE OF CUT SLOPE)
 D = FILL DIVERSION TO SEDIMENT TRAP
 VCB = VEGETATION BUFFER (UNDISTURBED LAND INSIDE PC)
 FCD = FLOW CONTROL DITCH
 PARI = PAD/ACCESS ROAD INTERFACE
 [Symbol] = LEVEL SPREADER
 [Symbol] = SEED, ECB & FLEX
 [Symbol] = SEED



906 Main Street
 Evanston, Wyoming 82930
 Phone No. (307) 789-4545



Production Schematic
 Project No. 10-04-80
 Date Drawn: 5/31/11

Scale: 1" = 50'
 Date Surveyed: 1/18/11
 Latest Revision Date:

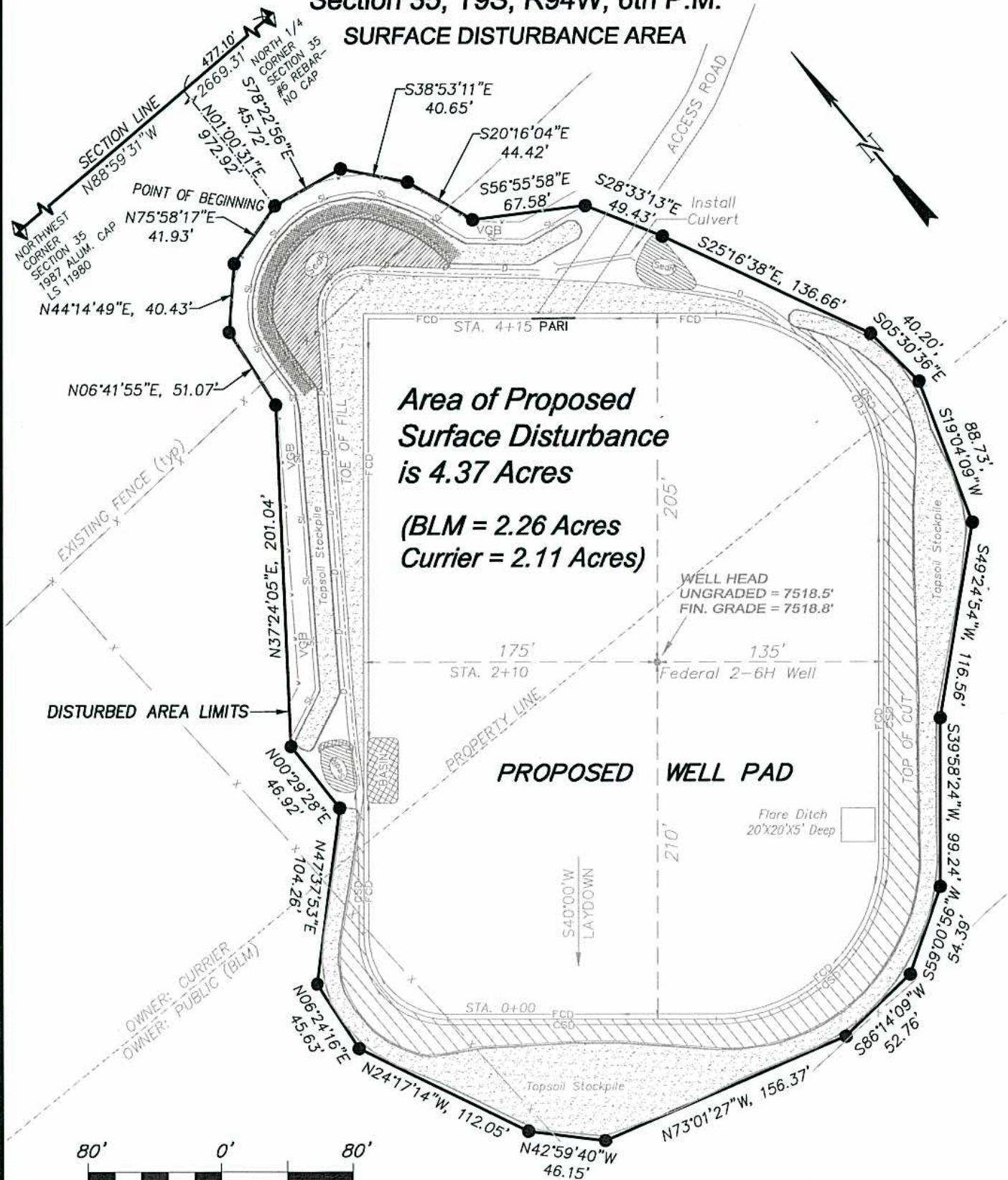
SHEET
6
 OF 10

EnCana Oil & Gas (USA) Inc.

PL35NW (9-94) Well Pad

Section 35, T9S, R94W, 6th P.M.

SURFACE DISTURBANCE AREA



906 Main Street
 Evanston, Wyoming 82930
 Phone No. (307) 789-4545

Surface Disturbance		Scale: 1" = 80'		SHEET 7 OF 10
Project No.	10-04-80	Date Surveyed:	1/18/11	
Date Drawn:	5/31/11	Latest Revision Date:		