

Well Name: **Wildflower 19-27**

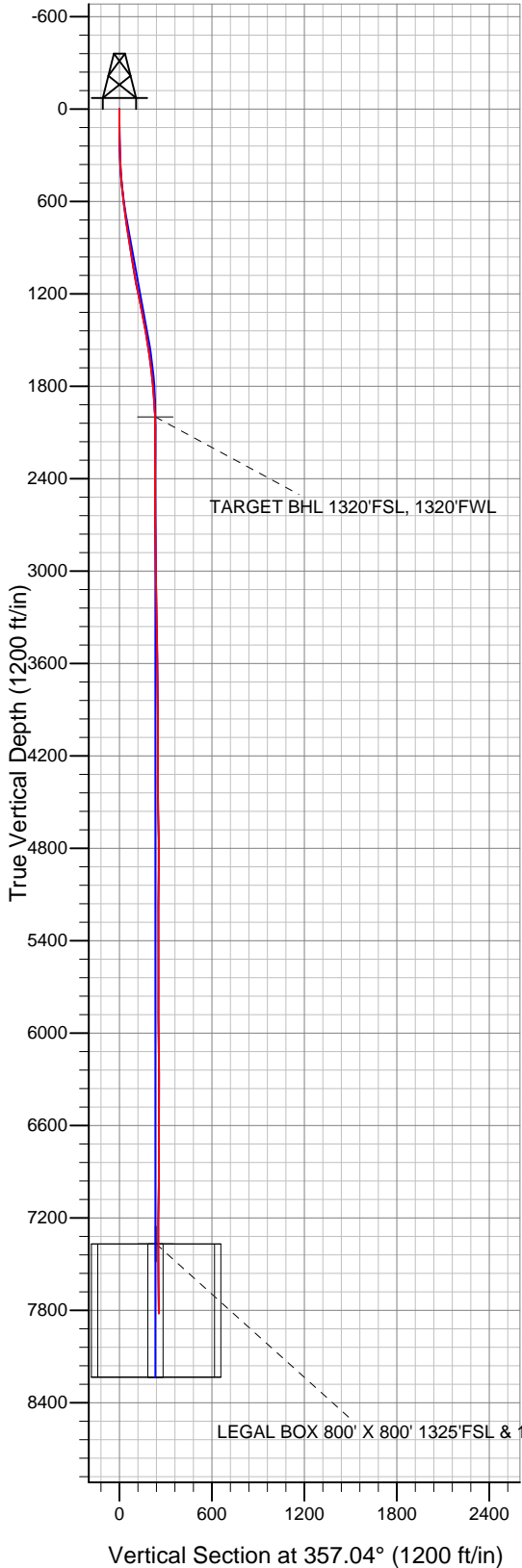
Surface Location: Wildflower 19-27 Pad Sec.27-T2N-R68W
 North American Datum 1983 US State Plane 1983 Colorado Northern Zone

Ground Elevation: 5008.0

+N/-S	+E/-W	Northing	Easting	Latitude	Longitude
0.0	0.0	1281592.79	3141524.17	40.105256	-104.994050

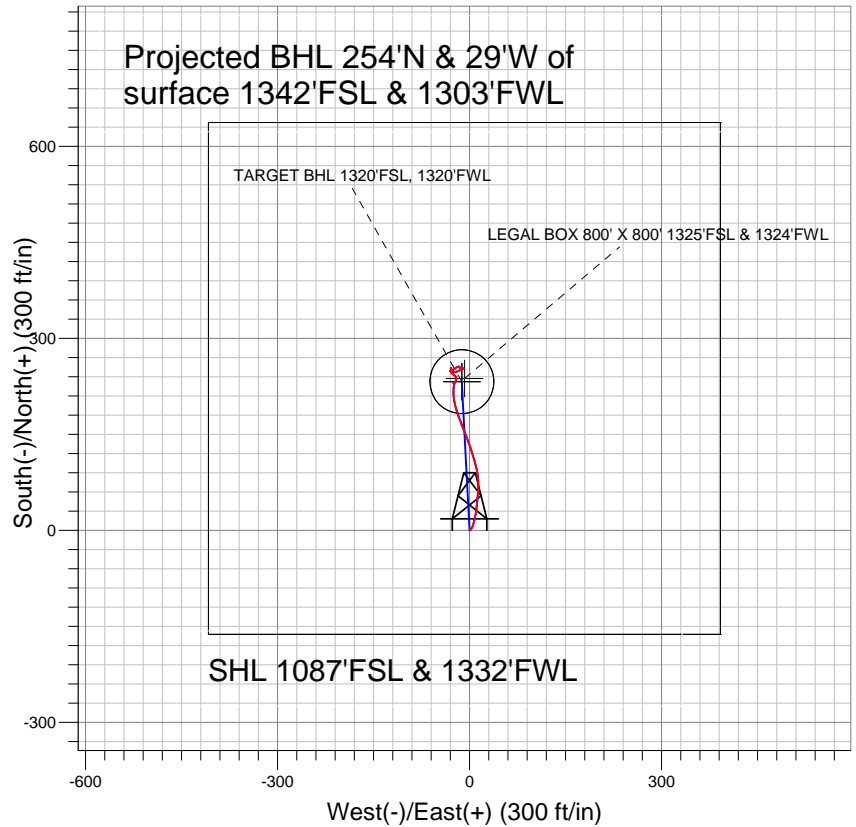
Original Well Elev WELL @ 5023.0ft (Original Well Elev)

Slot



Anadarko, Weld County CO

Projected BHL 254'N & 29'W of
 surface 1342'FSL & 1303'FWL



LEGEND

- Wildflower 19-27, Wellbore #1, Plan #1 (1-17-11) V0
- Wellbore #1
- Survey #1

Final Survey Plot

Projected Final Survey -
 7840'MD & 7821'TVD @ 255' VS
 0.8 deg Inc 15.8 deg AZ

Project: SEC.27-T2N-R68W
 Site: Wildflower 19-27 Pad Sec.27-T2N-R68W
 Well: Wildflower 19-27
 Plan: Wellbore #1



Directional

Anadarko, Weld County CO

SEC.27-T2N-R68W

Wildflower 19-27 Pad Sec.27-T2N-R68W

Wildflower 19-27

Wellbore #1

Survey: Survey #1

Standard Survey Report

21 March, 2011

Company:	Anadarko, Weld County CO	Local Co-ordinate Reference:	Well Wildflower 19-27
Project:	SEC.27-T2N-R68W	TVD Reference:	WELL @ 5023.0ft (Original Well Elev)
Site:	Wildflower 19-27 Pad Sec.27-T2N-R68W	MD Reference:	WELL @ 5023.0ft (Original Well Elev)
Well:	Wildflower 19-27	North Reference:	True
Wellbore:	Wellbore #1	Survey Calculation Method:	Minimum Curvature
Design:	Wellbore #1	Database:	Landmark

Project	SEC.27-T2N-R68W, Weld County, Colorado		
Map System:	US State Plane 1983	System Datum:	Mean Sea Level
Geo Datum:	North American Datum 1983		Using Well Reference Point
Map Zone:	Colorado Northern Zone		Using geodetic scale factor

Site	Wildflower 19-27 Pad Sec.27-T2N-R68W				
Site Position:		Northing:	1,281,592.81 ft	Latitude:	40.105256
From:	Lat/Long	Easting:	3,141,524.17ft	Longitude:	-104.994050
Position Uncertainty:	0.0 ft	Slot Radius:	"	Grid Convergence:	0.33 °

Well	Wildflower 19-27					
Well Position	+N-S	0.0 ft	Northing:	1,281,592.79 ft	Latitude:	40.105256
	+E-W	0.0 ft	Easting:	3,141,524.17 ft	Longitude:	-104.994050
Position Uncertainty		0.0 ft	Wellhead Elevation:	ft	Ground Level:	5,008.0 ft

Wellbore	Wellbore #1				
Magnetics	Model Name	Sample Date	Declination (°)	Dip Angle (°)	Field Strength (nT)
	IGRF2010	1/5/2011	9.02	66.79	52,996

Design	Wellbore #1				
Audit Notes:					
Version:	1.0	Phase:	ACTUAL	Tie On Depth:	0.0
Vertical Section:	Depth From (TVD) (ft)	+N/-S (ft)	+E/-W (ft)	Direction (°)	
	0.0	0.0	0.0	357.04	

Survey Program	Date	3/21/2011			
From (ft)	To (ft)	Survey (Wellbore)	Tool Name	Description	
171.0	7,840.0	Survey #1 (Wellbore #1)	MWD	MWD - Standard	

Survey										
Measured Depth (ft)	Inclination (°)	Azimuth (°)	Vertical Depth (ft)	+N/-S (ft)	+E/-W (ft)	Vertical Section (ft)	Dogleg Rate (°/100ft)	Build Rate (°/100ft)	Turn Rate (°/100ft)	
0.0	0.00	0.00	0.0	0.0	0.0	0.0	0.00	0.00	0.00	
171.0	1.10	52.40	171.0	1.0	1.3	0.9	0.64	0.64	0.00	
262.0	2.00	34.50	262.0	2.8	2.9	2.7	1.11	0.99	-19.67	
354.0	2.90	24.10	353.9	6.3	4.8	6.0	1.09	0.98	-11.30	
445.0	4.20	14.40	444.7	11.6	6.5	11.3	1.57	1.43	-10.66	
568.0	6.20	11.20	567.2	22.5	8.9	22.0	1.64	1.63	-2.60	
691.0	7.90	5.80	689.3	37.4	11.1	36.8	1.48	1.38	-4.39	
775.0	9.80	6.20	772.2	50.3	12.4	49.6	2.26	2.26	0.48	
862.0	8.40	3.00	858.1	64.0	13.6	63.2	1.71	-1.61	-3.68	
957.0	8.70	357.20	952.1	78.1	13.6	77.3	0.96	0.32	-6.11	
1,052.0	9.50	348.00	1,045.9	92.9	11.6	92.2	1.75	0.84	-9.68	
1,147.0	11.30	344.10	1,139.3	109.6	7.4	109.0	2.03	1.89	-4.11	
1,274.0	12.20	340.80	1,263.7	134.2	-0.4	134.0	0.88	0.71	-2.60	

Company:	Anadarko, Weld County CO	Local Co-ordinate Reference:	Well Wildflower 19-27
Project:	SEC.27-T2N-R68W	TVD Reference:	WELL @ 5023.0ft (Original Well Elev)
Site:	Wildflower 19-27 Pad Sec.27-T2N-R68W	MD Reference:	WELL @ 5023.0ft (Original Well Elev)
Well:	Wildflower 19-27	North Reference:	True
Wellbore:	Wellbore #1	Survey Calculation Method:	Minimum Curvature
Design:	Wellbore #1	Database:	Landmark

Survey

Measured Depth (ft)	Inclination (°)	Azimuth (°)	Vertical Depth (ft)	+N/-S (ft)	+E/-W (ft)	Vertical Section (ft)	Dogleg Rate (°/100ft)	Build Rate (°/100ft)	Turn Rate (°/100ft)
1,401.0	11.50	337.70	1,388.0	158.6	-9.6	158.9	0.74	-0.55	-2.44
1,496.0	9.70	340.30	1,481.3	174.9	-15.9	175.5	1.96	-1.89	2.74
1,591.0	8.60	343.30	1,575.1	189.2	-20.7	190.0	1.26	-1.16	3.16
1,686.0	7.10	348.90	1,669.2	201.8	-23.8	202.7	1.77	-1.58	5.89
1,782.0	5.80	359.40	1,764.6	212.5	-25.0	213.5	1.82	-1.35	10.94
1,877.0	4.60	1.80	1,859.2	221.1	-25.0	222.1	1.28	-1.26	2.53
1,972.0	3.10	14.00	1,954.0	227.4	-24.2	228.3	1.79	-1.58	12.84
2,018.2	1.86	13.46	2,000.2	229.3	-23.7	230.2	2.68	-2.68	-1.16
TARGET BHL 1320'FSL, 1320'FWL									
2,069.0	0.50	9.80	2,051.0	230.3	-23.5	231.2	2.68	-2.68	-7.21
2,260.0	0.70	247.00	2,242.0	230.7	-24.4	231.6	0.55	0.10	-64.29
2,450.0	0.40	162.50	2,432.0	229.6	-25.3	230.6	0.41	-0.16	-44.47
2,672.0	0.80	40.40	2,654.0	230.1	-24.1	231.0	0.48	0.18	-55.00
2,863.0	1.30	29.40	2,844.9	233.0	-22.1	233.8	0.28	0.26	-5.76
3,053.0	0.90	22.20	3,034.9	236.2	-20.5	237.0	0.22	-0.21	-3.79
3,243.0	0.90	323.90	3,224.9	238.8	-20.8	239.6	0.46	0.00	-30.68
3,434.0	1.30	314.70	3,415.8	241.5	-23.3	242.4	0.23	0.21	-4.82
3,624.0	0.60	316.80	3,605.8	243.8	-25.5	244.8	0.37	-0.37	1.11
3,814.0	1.00	313.80	3,795.8	245.7	-27.3	246.7	0.21	0.21	-1.58
4,004.0	1.30	322.20	3,985.8	248.5	-29.9	249.7	0.18	0.16	4.42
4,195.0	2.30	116.20	4,176.7	248.5	-27.8	249.6	1.84	0.52	80.63
4,385.0	2.10	75.30	4,366.6	247.7	-21.0	248.5	0.81	-0.11	-21.53
4,575.0	1.80	53.90	4,556.5	250.4	-15.2	250.8	0.41	-0.16	-11.26
4,766.0	0.90	32.10	4,747.4	253.4	-12.0	253.7	0.53	-0.47	-11.41
4,955.0	0.90	119.90	4,936.4	253.9	-9.9	254.1	0.66	0.00	46.46
5,146.0	0.10	213.60	5,127.4	253.0	-8.7	253.1	0.48	-0.42	49.06
5,336.0	0.40	251.50	5,317.4	252.7	-9.4	252.8	0.17	0.16	19.95
5,526.0	0.50	262.10	5,507.4	252.4	-10.9	252.6	0.07	0.05	5.58
5,717.0	0.40	287.70	5,698.4	252.4	-12.3	252.7	0.12	-0.05	13.40
5,907.0	0.50	281.70	5,888.4	252.8	-13.8	253.2	0.06	0.05	-3.16
6,097.0	0.70	341.70	6,078.4	254.1	-14.9	254.5	0.33	0.11	31.58
6,288.0	0.40	331.80	6,269.4	255.8	-15.6	256.2	0.16	-0.16	-5.18
6,478.0	0.50	250.90	6,459.4	256.1	-16.7	256.6	0.31	0.05	-42.58
6,668.0	0.70	244.90	6,649.3	255.3	-18.5	255.9	0.11	0.11	-3.16
6,858.0	0.70	246.40	6,839.3	254.4	-20.7	255.1	0.01	0.00	0.79
7,049.0	1.00	229.30	7,030.3	252.8	-23.0	253.7	0.20	0.16	-8.95
7,239.0	0.80	247.10	7,220.3	251.2	-25.5	252.2	0.18	-0.11	9.37
7,388.5	0.62	270.69	7,369.8	250.8	-27.2	251.9	0.23	-0.12	15.78
LEGAL BOX 800' X 800' 1325'FSL & 1324'FWL - TARGET CIRCLE 1320'FSL & 1320'FWL									
7,429.0	0.60	279.00	7,410.3	250.9	-27.7	252.0	0.23	-0.06	20.53
7,620.0	0.50	334.50	7,601.3	251.8	-29.0	252.9	0.27	-0.05	29.06
7,790.0	0.80	15.80	7,771.3	253.6	-29.0	254.7	0.32	0.18	24.29
7,840.0	0.80	15.80	7,821.2	254.3	-28.8	255.4	0.00	0.00	0.00

Checked By: _____ Approved By: _____ Date: _____