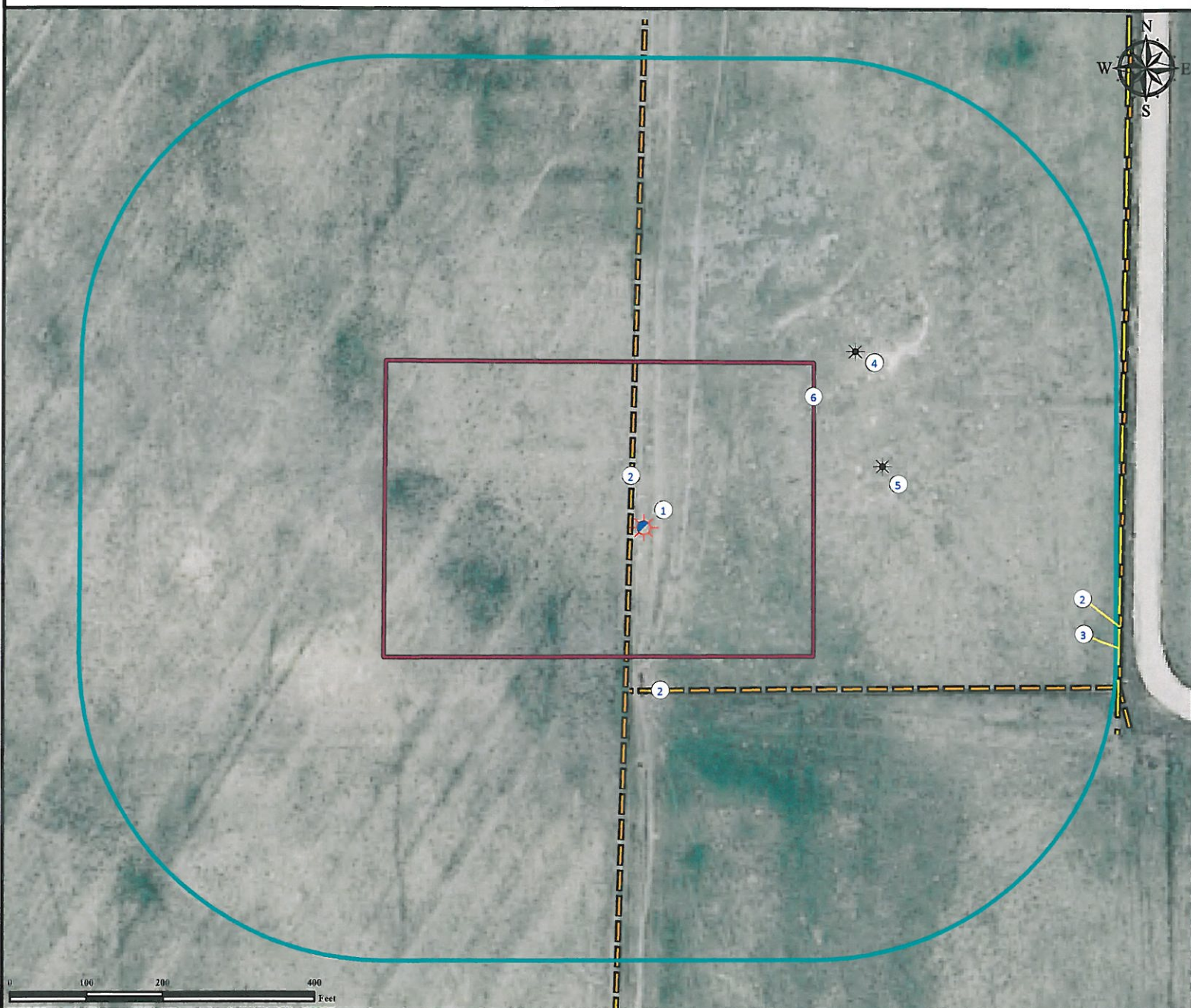


Location Drawing

A & B HILL RANCH 20-44-7-60

Horizontal Well Pad

SE¼ SE¼ SECTION 20, TOWNSHIP 7 NORTH, RANGE 60 WEST OF THE 6TH PRINCIPAL MERIDIAN



1. Proposed Well A&B HILL RANCH 20-44-7-60.

2. Fences are ±19' W, ±213' S, and ±629' E.

3. Minor Power Line is ±628' E.

4. Dry and Abandoned Well MITZEL #P-X is ±381' NE.

5. Dry and Abandoned Well MITZEL P is ±323' NE.

6. Operational Disturbance Area.

Legend



Proposed Well



Dry and Abandoned Well



400' Radius



Disturbance Area



Power Line



Fence

Reference Location

** All Measurements are Made from Reference Well

A&B HILL RANCH 20-44-7-60 **

LAT: 40.55407° LONG: -104.11084° (NAD 83)

Elevation: 4914.1 Feet

Surface Use: Rangeland



Use our resources to find yours!

www.petro-fs.com

(303) 928-7128

Field Date: 04/04/2011

Drafting Date: 04/18/2011

Drafter: KLM

Checked By: BHF

Data Sources:

- Aerial courtesy of NAIP (2009)

Prepared for:

