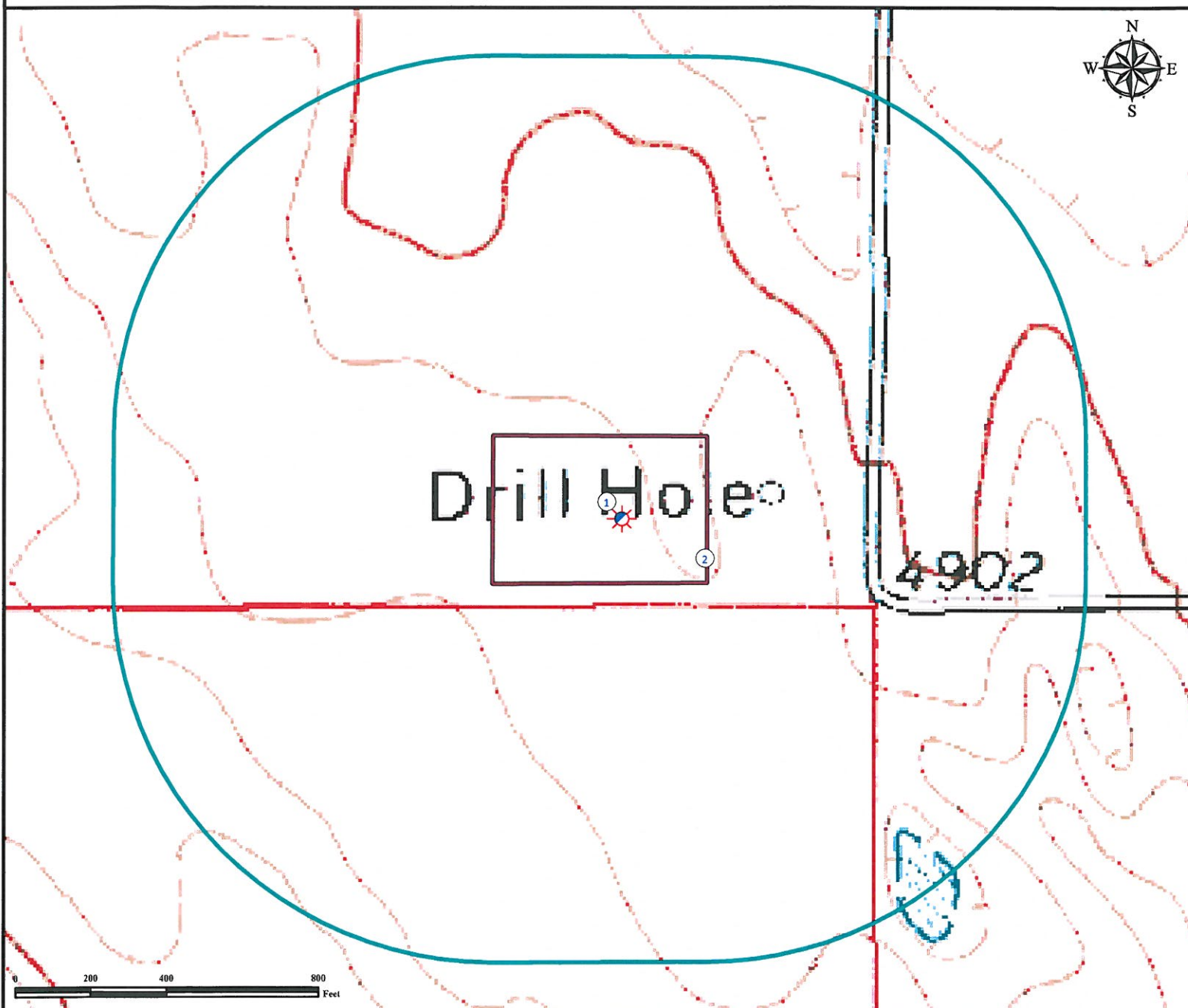


Hydrology Map

A & B HILL RANCH 20-44-7-60

SE¼ SE¼ SECTION 20, TOWNSHIP 7 NORTH, RANGE 60 WEST OF THE 6TH PRINCIPAL MERIDIAN




1. Proposed Well A&B HILL RANCH 20-44-7-60.

2. Operational Disturbance Area.

There are no surface waters with 1000' of the disturbed area of the proposed oil & gas location.

Legend

 Proposed Well

 1000' Radius

 Disturbance Area

Reference Location

** All Measurements are Made from
Reference Well
A&B HILL RANCH 20-44-7-60 (NAD83) **
LAT: 40.55407° LONG: -104.11084°
Elevation: 4914.1 Feet



Use our resources to find yours!
www.petro-fs.com
(303) 928-7128

Field Date: 04/04/2011
Drafting Date: 04/18/2011
Drafter: KLM
Checked By: BHF

Data Sources:
- Topo courtesy USGS

Prepared for:

