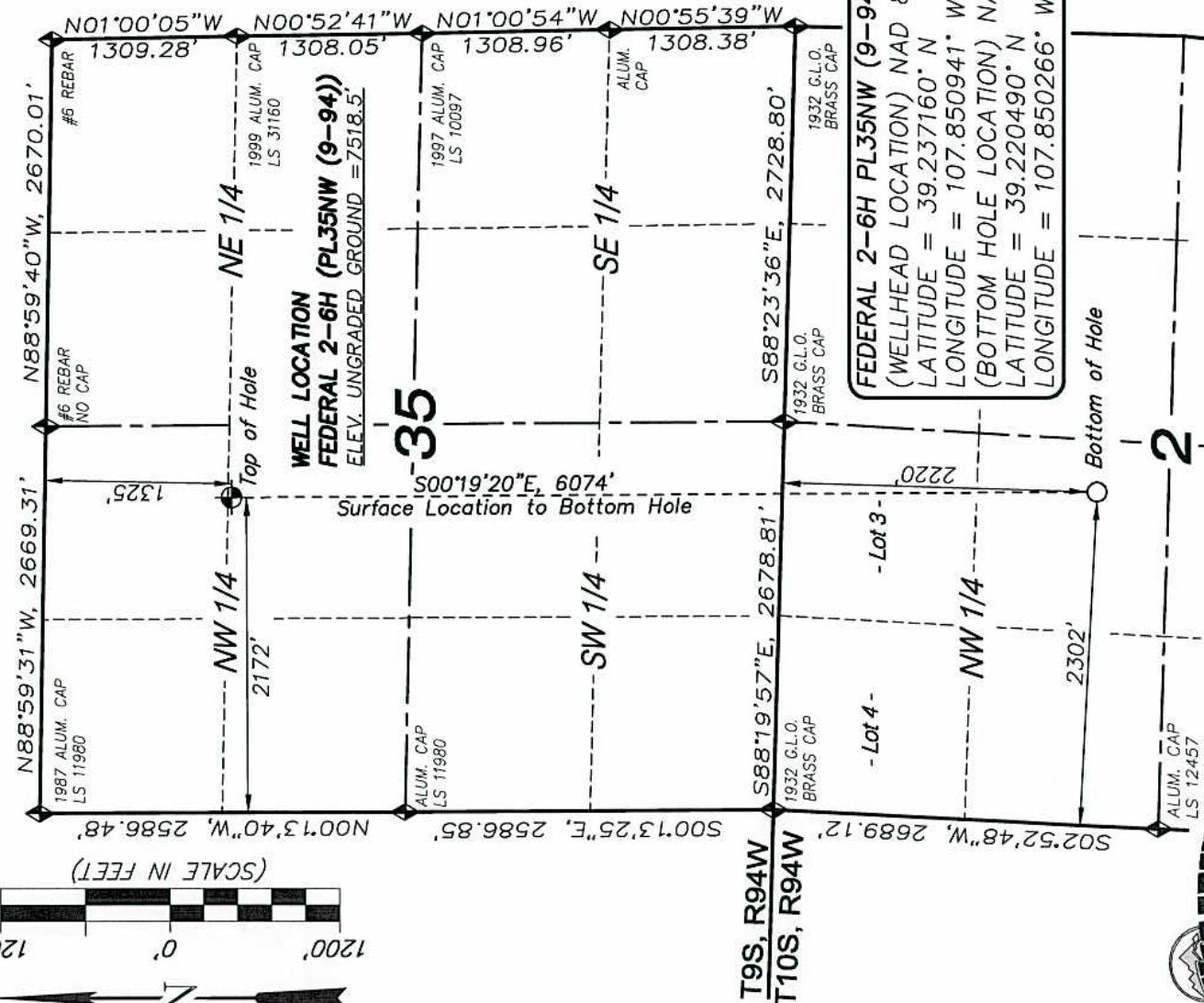
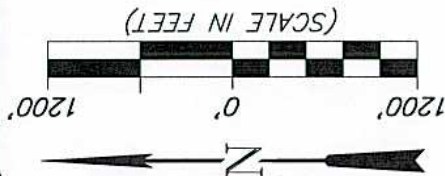
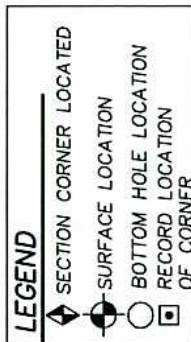


T9S, R94W, 6th P.M.



**FEDERAL 2-6H PL35NW (9-94) WELL**  
 (WELLHEAD LOCATION) NAD 83  
 LATITUDE = 39.237160° N  
 LONGITUDE = 107.850941° W  
 (BOTTOM HOLE LOCATION) NAD 83  
 LATITUDE = 39.220490° N  
 LONGITUDE = 107.850266° W



**CERTIFICATE OF SURVEYOR**

I, TED TAGGART OF FRUITA, COLORADO HEREBY CERTIFY THAT THIS MAP WAS MADE FROM NOTES TAKEN DURING AN ACTUAL SURVEY MADE BY ME OR UNDER MY DIRECTION FOR ENCANA OIL & GAS (USA) INC. AND THAT THIS LOCATION HAS BEEN STAKED ON THE GROUND AS SHOWN HEREON.

**NOTES**

1. WELL FOOTAGES ARE MEASURED AT RIGHT ANGLES TO SECTION LINES.
2. ALL DIRECTIONS, DISTANCES AND DIMENSIONS SHOWN HEREON ARE BASED ON THE STATE PLANE COORDINATE SYSTEM "COLORADO CENTRAL NAD 83" U.S. SURVEY FEET.
3. THE BOTTOM HOLE BEARS S00°19'20"E, 6074' FROM TOP OF HOLE.
4. SEE ADDENDUM TO LEGAL PLAT (SHEET 1b) FOR VISIBLE IMPROVEMENTS WITHIN 400 FEET OF THE PROPOSED OIL & GAS LOCATION.
5. CONTROL FOR SURVEY WAS ESTABLISHED USING DIFFERENTIALLY CORRECTED GPS FROM AN OPUS BASED CONTROL NETWORK. WELL LOCATION WAS ESTABLISHED USING NON-GPS CONVENTIONAL METHODS, THEREFORE NO PDOP READING WAS TAKEN.

**MAP to ACCOMPANY**  
**APPLICATION for PERMIT to DRILL**  
**EnCana Oil & Gas (USA) Inc.**  
**Federal 2-6H PL35NW (9-94) Well**

SE1/4 NW1/4, SECTION 35  
 T9S, R94W, 6th P.M.  
 MESA COUNTY, COLORADO

Location Plat	Scale: 1" = 1200'	SHEET
Project No. 10-04-80	Date Surveyed: 1/18/11	<b>1a</b> OF 10
Date Drawn: 5/31/11	Latest Revision Date:	