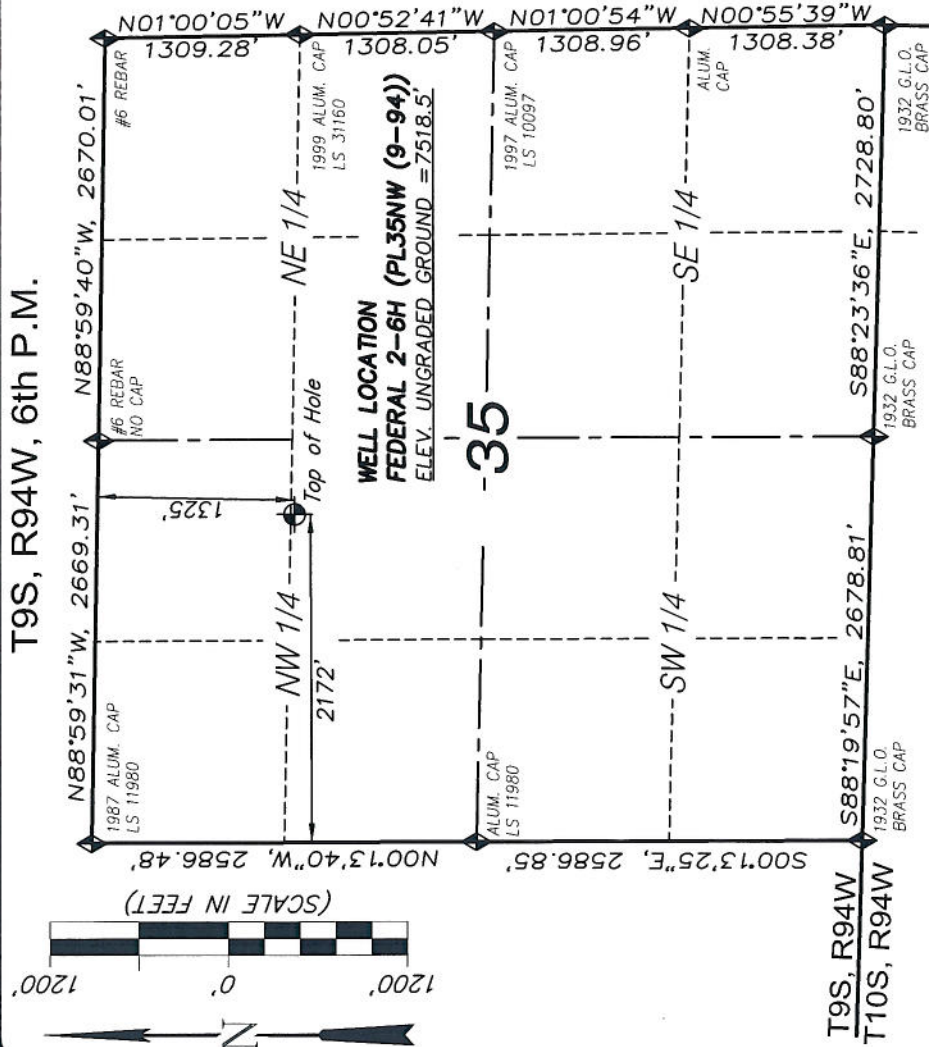


T9S, R94W, 6th P.M.

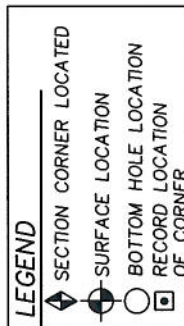


## NOTES

1. WELL FOOTAGES ARE MEASURED AT RIGHT ANGLES TO SECTION LINES.
2. ALL DIRECTIONS, DISTANCES AND DIMENSIONS SHOWN HEREON ARE BASED ON THE STATE PLANE COORDINATE SYSTEM "COLORADO CENTRAL NAD 83" U.S. SURVEY FEET.
3. THIS IS A VERTICAL WELL.
4. SEE ADDENDUM TO LEGAL PLAT (SHEET 1b) FOR VISIBLE IMPROVEMENTS WITHIN 400 FEET OF THE PROPOSED OIL & GAS LOCATION.
5. CONTROL FOR SURVEY WAS ESTABLISHED USING DIFFERENTIALLY CORRECTED GPS FROM AN OPUS BASED CONTROL NETWORK. WELL LOCATION WAS ESTABLISHED USING NON-GPS CONVENTIONAL METHODS, THEREFORE NO PDOP READING WAS TAKEN.

## CERTIFICATE OF SURVEYOR

I, TED TAGGART OF FRUITA, COLORADO HEREBY CERTIFY THAT THIS MAP WAS MADE FROM NOTES TAKEN DURING AN ACTUAL SURVEY MADE BY ME OR UNDER MY DIRECTION FOR ENCANA OIL & GAS (USA) INC. AND THAT THIS LOCATION HAS BEEN STAKED ON THE GROUND AS SHOWN HEREON.



## MAP TO ACCOMPANY

APPLICATION for PERMIT to DRILL

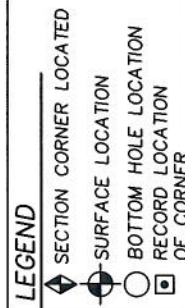
EnCana Oil & Gas (USA) Inc.

Federal 2-6H PL35NW (9-94) Well

SE1/4 NW1/4, SECTION 35

T9S, R94W, 6th P.M.

MESA COUNTY, COLORADO

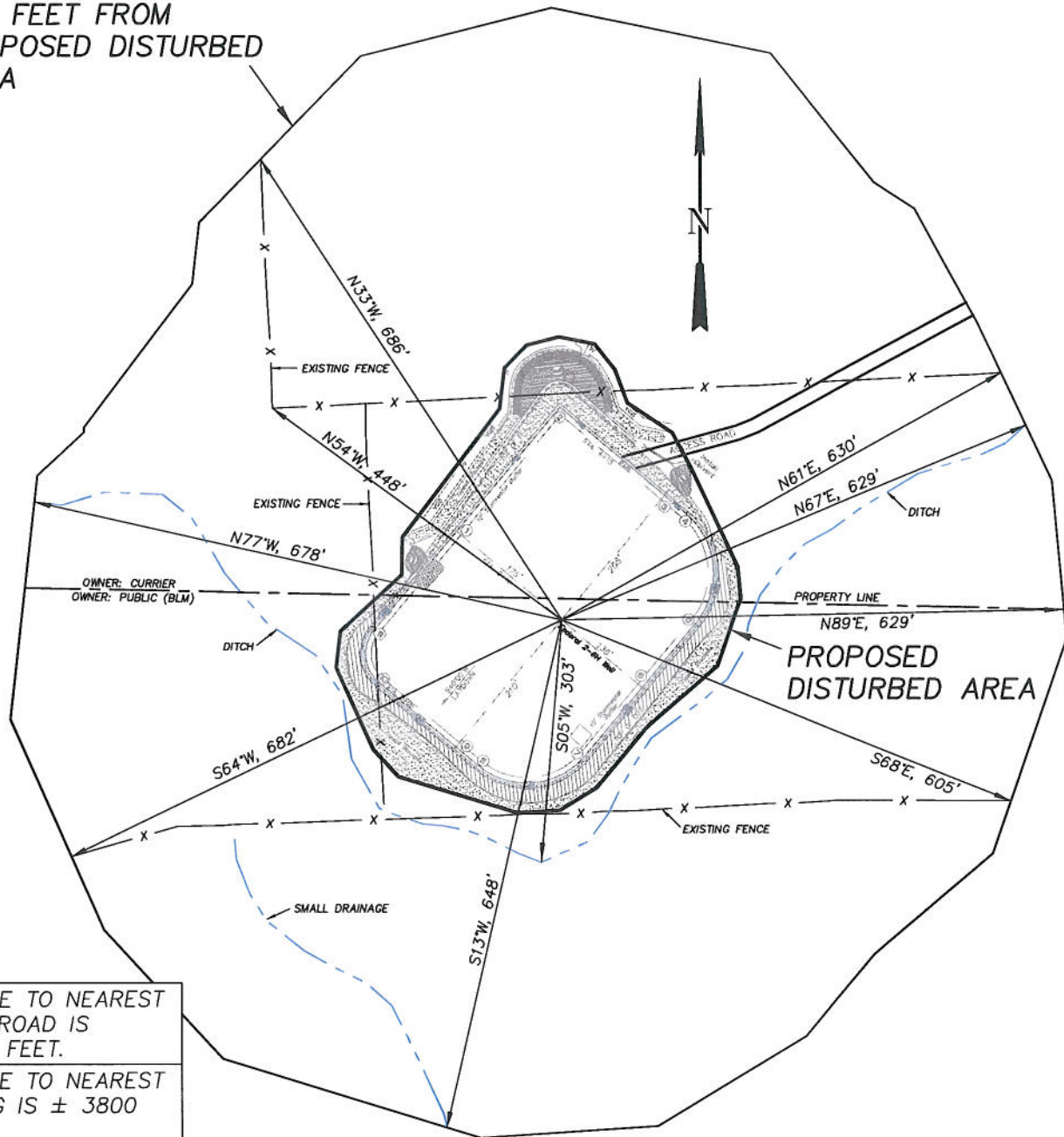


FEDERAL 2-6H PL35NW (9-94) WELL  
(WELLHEAD LOCATION) NAD 83  
LATITUDE = 39.237160° N  
LONGITUDE = 107.850941° W  
(BOTTOM HOLE LOCATION) NAD 83  
LATITUDE = 39.237160° N  
LONGITUDE = 107.850941° W

Location Plat	Scale: 1" = 1200'	SHEET
Project No. 10-04-80	Date Surveyed: 1/18/11	1a
Date Drawn: 6/06/11	Latest Revision	OF 10

**EnCana Oil & Gas (USA) Inc.**  
**ADDENDUM TO LEGAL PLATS FOR**  
**PL35NW (9-94) Well Pad**  
**SECTION 35, T9S, R94W, 6th P.M.**

400 FEET FROM  
PROPOSED DISTURBED  
AREA



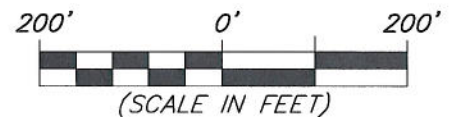
DISTANCE TO NEAREST  
PUBLIC ROAD IS  
± 4890 FEET.

DISTANCE TO NEAREST  
BUILDING IS ± 3800  
FEET.

DISTANCE TO NEAREST  
ABOVE GROUND UTILITY  
IS ± 4000 FEET.

DISTANCE TO NEAREST  
RAILROAD IS ± 94,000  
FEET.

Surface use of pad is grazing.  
Vegetation consists mainly of  
sage brush, oak brush and native  
grasses.



906 Main Street  
Evanston, Wyoming 82930  
Phone No. (307) 789-4545

Survey Addendum		Scale: 1" = 200'	SHEET <b>1b</b> OF 10
Project No.	10-04-80	Date Surveyed: 1/18/11	
Date Drawn:	5/31/11	Latest Revision Date:	