

Downhole Schematic for White 14-1 (A14OU)



Project :South Piceance

Area : Orchard

As Of : 07/12/2007

API # :05077091710000

County :MESA

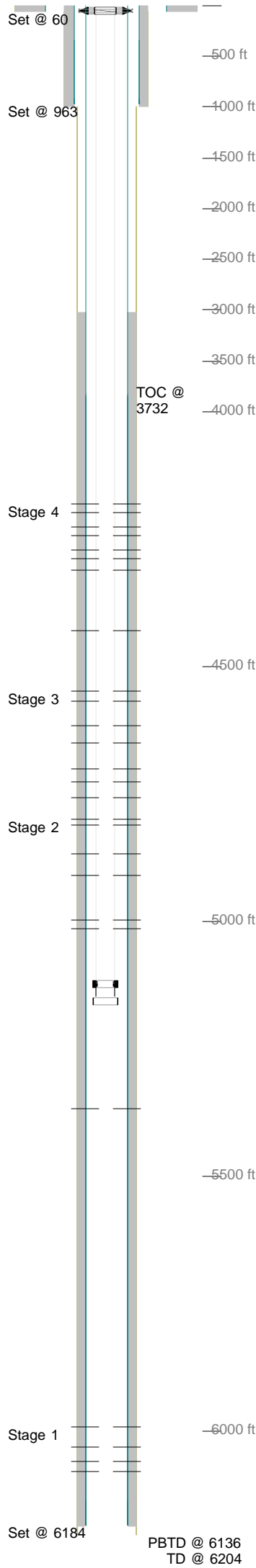
GL : 6024.7 ft

Surface Location : NENE Sec 14 T8S - R96W 6th PI

BHL : NENE-14-8S-96 W 6th PM

KB to GL : 16.0 ft

KB : 6040.7 ft



Casing Details								
Section	Hole	Casing	Mass	Set At	Length	Thread	Grade	Description
Conductor	24.000	16	42	60	60			CONDUCTOR
Surface	11.000	8.625	24	963	1	ST&C	K55	SHOE
		8.625	24	962	44	ST&C	J55	CASING
		8.625	24	918	2	ST&C	J55	FLOAT
		8.625	24	917	572	ST&C	J55	CASING JOINTS
		8.625	32	345	348	ST&C	J55	CASING JOINTS
Production	7.875	5.5	17	6,184	2	LT&C	K55	SHOE
		5.5	17	6,183	45	LT&C	I-80	JT CASING
		5.5	17	6,138	2	LT&C	K55	FLOAT
		5.5	17	6,136	2,278	LT&C	I-80	JTS CASING
		5.5	17	3,858	27	LT&C	I-80	MARKER JT
		5.5	17	3,832	3,836	LT&C	I-80	JTS CASING
Cement Details								
Section	Sequence	Top	Density	Blend / Additives				
Conductor	Scavenger	0	0.0	6 yds redi-mix /				
Surface	Tail	0	15.8	G-BLEND / G+2%S1+.2%DO46+.25#/SKDO29				
Production	Tail	3,023	13.5	TXI (HMS) / DO49TXI+.5%DO65+.4%DO46+.25#/SKDO29+.5%D167				
Tubing and Downhole Equipment								
O.D.	Length	Depth	Description					
0.000	14.00	14.00	Land below 16' KB					
7.000	0.86	14.86	5 1/16" 5KWG X 2 3/8" EUE Hgr.					
2.594	0.69	15.55	2 3/8" N-80 saver sub					
2.375	5,100.25	5,115.80	160 jts. 2 3/8" 4.7# J-55 EUE tbg.					
3.063	0.98	5,116.78	2 3/8" 1.81" Profile "F" nipple					
2.375	32.40	5,149.18	1 jt. tubing as above					
3.063	0.44	5,149.62	2 3/8" notched collar					
Perforations								
Stage 1					06/01/2007	4,757	4,758	2
	Date	From	To	Shots		4,725	4,727	4
	05/29/2007	6,078	6,084	12		4,702	4,704	4
		6,060	6,066	12		4,650	4,652	4
		6,030	6,042	24		4,616	4,618	4
		5,992	5,998	12		4,567	4,568	2
Stage 2						4,548	4,549	2
	Date	From	To	Shots	Stage 4			
	05/31/2007	5,368	5,369	2	Date	From	To	Shots
		5,014	5,016	4	06/02/2007	4,430	4,431	2
		4,996	4,998	4		4,312	4,314	4
		4,911	4,913	4		4,288	4,290	4
		4,868	4,870	4		4,271	4,272	2
		4,810	4,811	2		4,242	4,243	2
		4,800	4,802	4		4,227	4,228	2
Stage 3						4,198	4,199	2
	Date	From	To	Shots		4,181	4,183	4
Frac Summary								
Stage 1 : 5,992 - 6,084, 60 - 0.350" shots, 1607 bbls of Lightning 18, 150215 lbs of 20-40 Sand Report								
Date: 05/30/2007								
Stage 2 : 4,800 - 5,369, 24 - 0.350" shots, 1898 bbls of Slickwater, 76286 lbs of 20-40 Sand, 4258 lbs of								
Non API Sand Report Date: 06/01/2007								
Stage 3 : 4,548 - 4,758, 22 - 0.350" shots, 3203 bbls of Slickwater, 152205 lbs of 20-40 Sand, 3829 lbs of								
Non API Sand Report Date: 06/01/2007								
Stage 4 : 4,181 - 4,431, 22 - 0.350" shots, 4423 bbls of Slickwater, 216854 lbs of 20-40 Sand, 6033 lbs of								
Non API Sand Report Date: 06/02/2007								
Comments								
Bradenhead pressure: 60 psi open / venting								