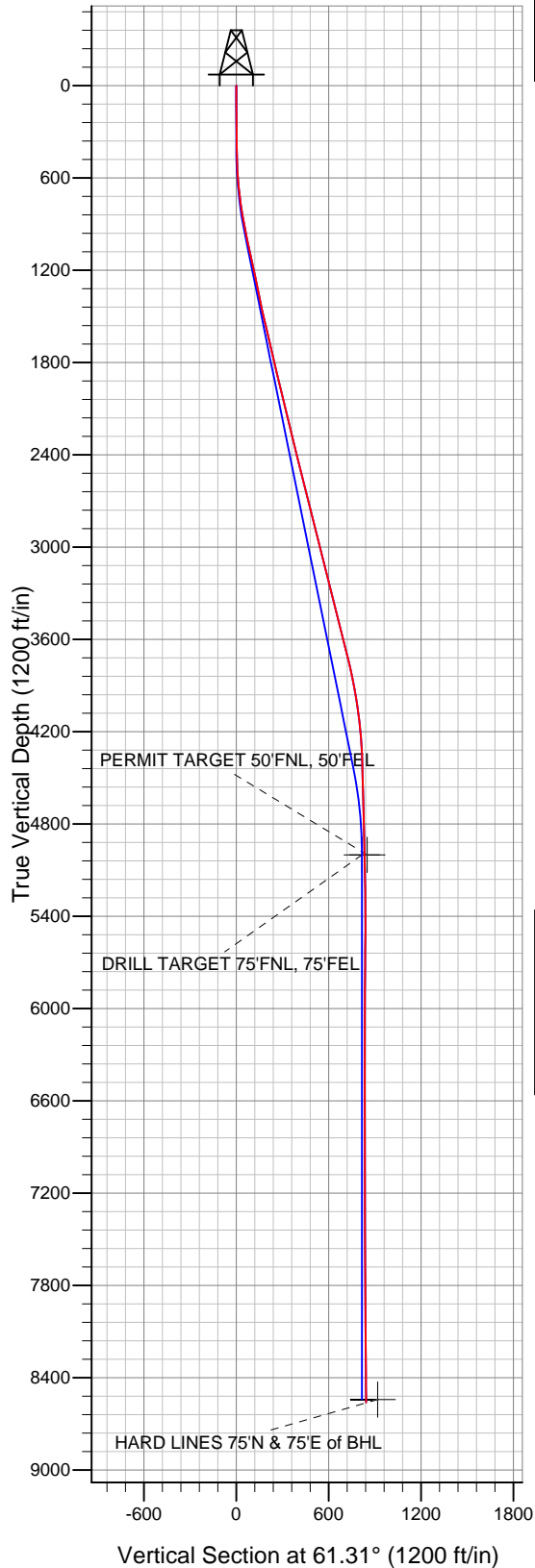
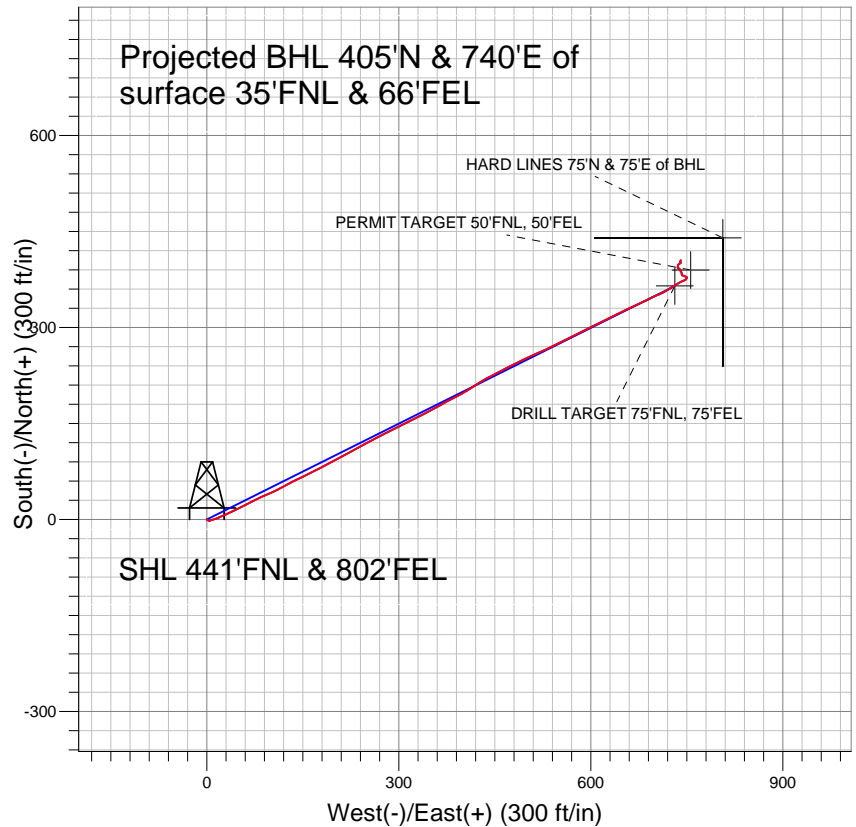


EnCana Oil & Gas Broomfield County, CO



Projected BHL 405'N & 740'E of
 surface 35'FNL & 66'FEL



LEGEND

- ✕ Stipanovich 8-0-27, Wellbore #1, Plan #1 (10-20-10) V0
- Wellbore #1
- Survey #1

Final Survey Plot

Projected Final Survey -
 8652'MD & 8561'TVD @ 843' VS
 1.0 deg Inc 15.9 deg AZ

Project: SEC.27-T1N-R68W
 Site: EnCana Stipanovich 8-0-27 Pad Sec.27-T1N-R68W
 Well: Stipanovich 8-0-27
 Plan: Wellbore #1



Directional

EnCana Oil & Gas Broomfield County, CO

SEC.27-T1N-R68W

EnCana Stipanovich 8-0-27 Pad Sec.27-T1N-R68W

Stipanovich 8-0-27

Wellbore #1

Survey: Survey #1

Standard Survey Report

29 November, 2010

Company:	EnCana Oil & Gas Broomfield County, CO	Local Co-ordinate Reference:	Well Stipanovich 8-0-27
Project:	SEC.27-T1N-R68W	TVD Reference:	WELL @ 5192.0ft (Original Well Elev)
Site:	EnCana Stipanovich 8-0-27 Pad Sec.27-T1N-R68W	MD Reference:	WELL @ 5192.0ft (Original Well Elev)
Well:	Stipanovich 8-0-27	North Reference:	True
Wellbore:	Wellbore #1	Survey Calculation Method:	Minimum Curvature
Design:	Wellbore #1	Database:	Landmark

Survey									
Measured Depth (ft)	Inclination (°)	Azimuth (°)	Vertical Depth (ft)	+N/-S (ft)	+E/-W (ft)	Vertical Section (ft)	Dogleg Rate (°/100ft)	Build Rate (°/100ft)	Turn Rate (°/100ft)
1,101.0	12.60	65.70	1,093.8	34.7	84.6	90.9	1.02	0.53	4.04
1,182.0	12.30	66.20	1,172.9	41.8	100.6	108.3	0.39	-0.37	0.62
1,276.0	11.40	60.40	1,264.9	50.5	117.8	127.6	1.59	-0.96	-6.17
1,371.0	11.60	63.90	1,358.0	59.3	134.6	146.5	0.76	0.21	3.68
1,465.0	12.60	64.10	1,449.9	67.9	152.3	166.2	1.06	1.06	0.21
1,560.0	13.10	62.60	1,542.5	77.4	171.1	187.3	0.63	0.53	-1.58
1,654.0	14.10	63.40	1,633.9	87.4	190.8	209.4	1.08	1.06	0.85
1,748.0	13.30	60.90	1,725.2	97.8	210.5	231.7	1.06	-0.85	-2.66
1,843.0	12.70	60.40	1,817.8	108.3	229.2	253.0	0.64	-0.63	-0.53
1,937.0	13.00	62.70	1,909.4	118.3	247.5	273.9	0.63	0.32	2.45
2,032.0	12.70	62.00	2,002.1	128.1	266.3	295.0	0.36	-0.32	-0.74
2,126.0	13.70	63.40	2,093.6	137.9	285.3	316.5	1.12	1.06	1.49
2,220.0	14.20	64.00	2,184.8	147.9	305.6	339.1	0.55	0.53	0.64
2,315.0	14.00	63.30	2,276.9	158.2	326.4	362.3	0.28	-0.21	-0.74
2,409.0	14.00	61.30	2,368.2	168.8	346.5	385.0	0.51	0.00	-2.13
2,504.0	13.80	60.60	2,460.4	179.9	366.5	407.8	0.28	-0.21	-0.74
2,598.0	14.70	64.80	2,551.5	190.4	387.0	430.9	1.46	0.96	4.47
2,693.0	14.10	57.30	2,643.5	201.8	407.7	454.5	2.06	-0.63	-7.89
2,787.0	13.80	57.00	2,734.7	214.1	426.7	477.1	0.33	-0.32	-0.32
2,881.0	13.50	64.00	2,826.1	225.0	446.0	499.3	1.79	-0.32	7.45
2,976.0	14.00	62.00	2,918.4	235.3	466.1	521.8	0.73	0.53	-2.11
3,070.0	14.40	63.10	3,009.5	245.9	486.6	544.9	0.51	0.43	1.17
3,165.0	14.00	67.70	3,101.6	255.6	507.7	568.1	1.26	-0.42	4.84
3,259.0	14.90	64.00	3,192.6	265.2	529.1	591.5	1.37	0.96	-3.94
3,353.0	14.50	63.60	3,283.5	275.8	550.5	615.3	0.44	-0.43	-0.43
3,449.0	14.50	63.90	3,376.5	286.4	572.1	639.3	0.08	0.00	0.31
3,543.0	14.40	62.60	3,467.5	297.0	593.0	662.8	0.36	-0.11	-1.38
3,639.0	14.00	63.80	3,560.6	307.6	614.0	686.3	0.52	-0.42	1.25
3,733.0	13.80	63.90	3,651.8	317.5	634.3	708.9	0.21	-0.21	0.11
3,827.0	13.10	65.10	3,743.2	326.9	654.0	730.7	0.80	-0.74	1.28
3,922.0	11.90	64.70	3,836.0	335.7	672.6	751.2	1.27	-1.26	-0.42
4,016.0	10.40	63.60	3,928.2	343.6	689.0	769.4	1.61	-1.60	-1.17
4,111.0	8.70	66.10	4,021.9	350.3	703.3	785.1	1.84	-1.79	2.63
4,205.0	6.70	64.80	4,115.0	355.5	714.7	797.7	2.14	-2.13	-1.38
4,299.0	5.20	54.80	4,208.5	360.3	723.2	807.4	1.93	-1.60	-10.64
4,394.0	3.50	52.20	4,303.3	364.6	729.0	814.5	1.80	-1.79	-2.74
4,488.0	1.60	65.40	4,397.2	366.9	732.4	818.6	2.10	-2.02	14.04
4,583.0	1.10	61.60	4,492.1	367.9	734.4	820.9	0.53	-0.53	-4.00
4,677.0	1.30	60.40	4,586.1	368.8	736.2	822.8	0.21	0.21	-1.28
4,772.0	1.40	65.70	4,681.1	369.8	738.2	825.1	0.17	0.11	5.58
4,866.0	1.60	68.40	4,775.1	370.8	740.4	827.5	0.23	0.21	2.87
4,960.0	1.70	64.80	4,869.0	371.9	742.9	830.2	0.15	0.11	-3.83
5,055.0	1.60	64.90	4,964.0	373.0	745.4	832.9	0.11	-0.11	0.11
5,090.6	1.56	61.16	4,999.5	373.5	746.3	833.9	0.31	-0.12	-10.51
DRILL TARGET 75'FNL, 75'FEL									
5,091.5	1.56	61.06	5,000.5	373.5	746.3	834.0	0.31	-0.11	-10.81
PERMIT TARGET 50'FNL, 50'FEL									
5,149.0	1.50	54.60	5,057.9	374.3	747.6	835.5	0.31	-0.10	-11.24
5,244.0	1.20	33.90	5,152.9	375.8	749.1	837.6	0.60	-0.32	-21.79
5,338.0	0.90	16.40	5,246.9	377.4	749.9	839.0	0.46	-0.32	-18.62
5,432.0	0.60	327.60	5,340.9	378.5	749.8	839.5	0.72	-0.32	-51.91
5,527.0	0.50	287.70	5,435.9	379.0	749.2	839.2	0.41	-0.11	-42.00
5,621.0	0.50	293.70	5,529.9	379.3	748.4	838.6	0.06	0.00	6.38

Company:	EnCana Oil & Gas Broomfield County, CO	Local Co-ordinate Reference:	Well Stipanovich 8-0-27
Project:	SEC.27-T1N-R68W	TVD Reference:	WELL @ 5192.0ft (Original Well Elev)
Site:	EnCana Stipanovich 8-0-27 Pad Sec.27-T1N-R68W	MD Reference:	WELL @ 5192.0ft (Original Well Elev)
Well:	Stipanovich 8-0-27	North Reference:	True
Wellbore:	Wellbore #1	Survey Calculation Method:	Minimum Curvature
Design:	Wellbore #1	Database:	Landmark

Survey									
Measured Depth (ft)	Inclination (°)	Azimuth (°)	Vertical Depth (ft)	+N/-S (ft)	+E/-W (ft)	Vertical Section (ft)	Dogleg Rate (°/100ft)	Build Rate (°/100ft)	Turn Rate (°/100ft)
5,716.0	0.70	288.50	5,624.9	379.7	747.5	838.0	0.22	0.21	-5.47
5,810.0	0.80	295.30	5,718.9	380.1	746.4	837.2	0.14	0.11	7.23
5,904.0	0.90	285.90	5,812.9	380.6	745.0	836.3	0.18	0.11	-10.00
5,999.0	0.90	293.50	5,907.9	381.1	743.6	835.3	0.13	0.00	8.00
6,093.0	0.80	322.40	6,001.8	381.9	742.6	834.8	0.46	-0.11	30.74
6,188.0	0.60	343.30	6,096.8	382.9	742.0	834.8	0.34	-0.21	22.00
6,283.0	0.80	354.20	6,191.8	384.1	741.8	835.1	0.25	0.21	11.47
6,378.0	1.10	344.20	6,286.8	385.6	741.5	835.6	0.36	0.32	-10.53
6,473.0	1.30	328.60	6,381.8	387.4	740.7	835.7	0.40	0.21	-16.42
6,567.0	1.30	326.40	6,475.8	389.2	739.5	835.6	0.05	0.00	-2.34
6,662.0	1.20	337.20	6,570.7	391.0	738.6	835.6	0.27	-0.11	11.37
6,756.0	0.60	285.30	6,664.7	392.1	737.7	835.3	1.02	-0.64	-55.21
6,851.0	0.70	298.60	6,759.7	392.5	736.7	834.7	0.19	0.11	14.00
6,945.0	0.40	308.30	6,853.7	392.9	736.0	834.2	0.33	-0.32	10.32
7,039.0	0.40	357.40	6,947.7	393.5	735.7	834.3	0.35	0.00	52.23
7,134.0	0.10	10.90	7,042.7	393.9	735.7	834.5	0.32	-0.32	14.21
7,228.0	0.40	5.80	7,136.7	394.3	735.7	834.7	0.32	0.32	-5.43
7,323.0	0.40	347.30	7,231.7	394.9	735.7	835.0	0.14	0.00	-19.47
7,417.0	0.50	18.60	7,325.7	395.7	735.7	835.4	0.28	0.11	33.30
7,511.0	0.40	358.20	7,419.7	396.4	735.9	835.8	0.20	-0.11	-21.70
7,606.0	0.50	27.40	7,514.7	397.1	736.0	836.3	0.26	0.11	30.74
7,699.0	0.70	25.50	7,607.7	397.9	736.5	837.1	0.22	0.22	-2.04
7,794.0	0.50	48.80	7,702.7	398.7	737.0	838.0	0.33	-0.21	24.53
7,888.0	0.40	63.10	7,796.7	399.2	737.6	838.7	0.16	-0.11	15.21
7,982.0	0.50	73.00	7,890.7	399.4	738.3	839.4	0.13	0.11	10.53
8,077.0	0.50	48.60	7,985.7	399.8	739.0	840.2	0.22	0.00	-25.68
8,171.0	0.40	64.60	8,079.7	400.2	739.6	841.0	0.17	-0.11	17.02
8,266.0	0.30	56.10	8,174.7	400.5	740.1	841.6	0.12	-0.11	-8.95
8,360.0	0.40	359.60	8,268.7	401.0	740.3	842.0	0.36	0.11	-60.11
8,455.0	0.90	335.80	8,363.7	402.0	740.0	842.2	0.59	0.53	-25.05
8,549.0	0.90	10.80	8,457.7	403.4	739.9	842.7	0.58	0.00	37.23
8,607.0	1.00	15.90	8,515.7	404.3	740.1	843.3	0.23	0.17	8.79
8,634.2	1.00	15.90	8,542.9	404.8	740.2	843.7	0.00	0.00	0.00
HARD LINES 75°N & 75°E of BHL									
8,652.0	1.00	15.90	8,560.7	405.1	740.3	843.9	0.00	0.00	0.00

Checked By: _____ Approved By: _____ Date: _____