

QUICKSILVER RESOURCES, INC.

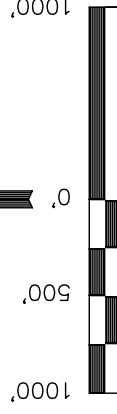
Well location, STODDARD #33-30, located as

BASIS OF ELEVATION

SPOT ELEVATION AT A ROAD INTERSECTION IN THE NORTH 1/2 OF SECTION 19, T6N, R90W, 6th. P.M., TAKEN FROM THE CASTOR GULCH QUADRANGLE, COLORADO, MOFFAT COUNTY, 7.5 MINUTE QUAD. (TOPOGRAPHIC MAP) PUBLISHED BY THE UNITED STATES DEPARTMENT OF THE INTERIOR, GEOLOGICAL SURVEY. SAID ELEVATION IS MARKED AS BEING 6411 FEET.

BASIS OF BEARINGS

BASIS OF BEARINGS IS A G.P.S. OBSERVATION.



CERTIFICATE

THIS IS TO CERTIFY THAT THE ABOVE PLAT WAS PREPARED FROM FIELD NOTES OF ACTUAL SURVEYS MADE BY ME OR UNDER MY SUPERVISION AND THAT THE SAME ARE TRUE AND CORRECT TO THE BEST OF MY KNOWLEDGE AND BELIEF.

1908 Brass Cap,
0.6' High, E/W
Fence
Lat: 40.441272.
Long: 107.524344.

UTAH ENGINEERING & LAND SURVEYING

85 SOUTH 200 EAST - VERNAL, UTAH 84078

(435) 789-1017

SCALE	DATE SURVEYED:	DATE DRAWN:
-------	----------------	-------------

1" = 1000'	05-03-11	05-05-
------------	----------	--------

PARTY	REFERENCES

M.A. C.K. J.I.	G.L.O. PLAT
----------------	-------------

WEATHER FILE

COOL	QUICKSILVER RESOURCES,
------	------------------------

N88°53'W – 5369.76' (G.L.O.)

1908 Brass Cap,
Flush W/Gound,
E/W Fence
Lat: 40.455919*
Long: 107.524572*

NOTE:
SEE ADDENDUM TO LEGAL PLAT FOR
EXISTING IMPROVEMENTS WITHIN 400'
OF THE PROPOSED WELL DISTURBANCE.

$00^{\circ}41'14''W - 5338.22' (Meas.)$

30

STODDARD #33-30

Elev. Ungraded Ground = 6610'

2016'

2160'

2008 Alum. Cap,
0.5' High, Garden
Post, E/W Fence,
PLS#13901
Lat: 40.441367.
Long: 107.529131

1908 Brass Cap
Lat: 40.441458°
Long: 107.53391°
(G.L.O.)

S88°33'00"E
1333.00' (Meas)

S88°32'52"E
1332.81' (Meas)

PDOP = 1.9

NAD 83 (SURFACE LOCATION)

LATITUDE = 40°26'50.44" (40.447344)

LONGITUDE = 107°31'54.05" (107.531681)

NAD 27 (SURFACE LOCATION)

LATITUDE = 40°26'50.54" (40.447372)

LONGITUDE = 107°31'51.82" (107.531061)
STATE PLANE NAD 83

N: 1412285.30	E: 2434600.56
STATE PLANE NAD 27	

STATE / CANTON / ZIP	
N: 412284.29	E: 1434758.22

LEGEND:

$$L = 90^\circ \text{ SYMBOL}$$

● = PROPOSED WELL HEAD.

▲ = SECTION CORNERS LOCATED.

R	90	W
<hr/>		
R	91	W

QUICKSILVER RESOURCES, INC.

ADDENDUM TO LEGAL PLAT FOR

STODDARD #33-30

SECTION 30, T6N, R90W, 6th. P.M.

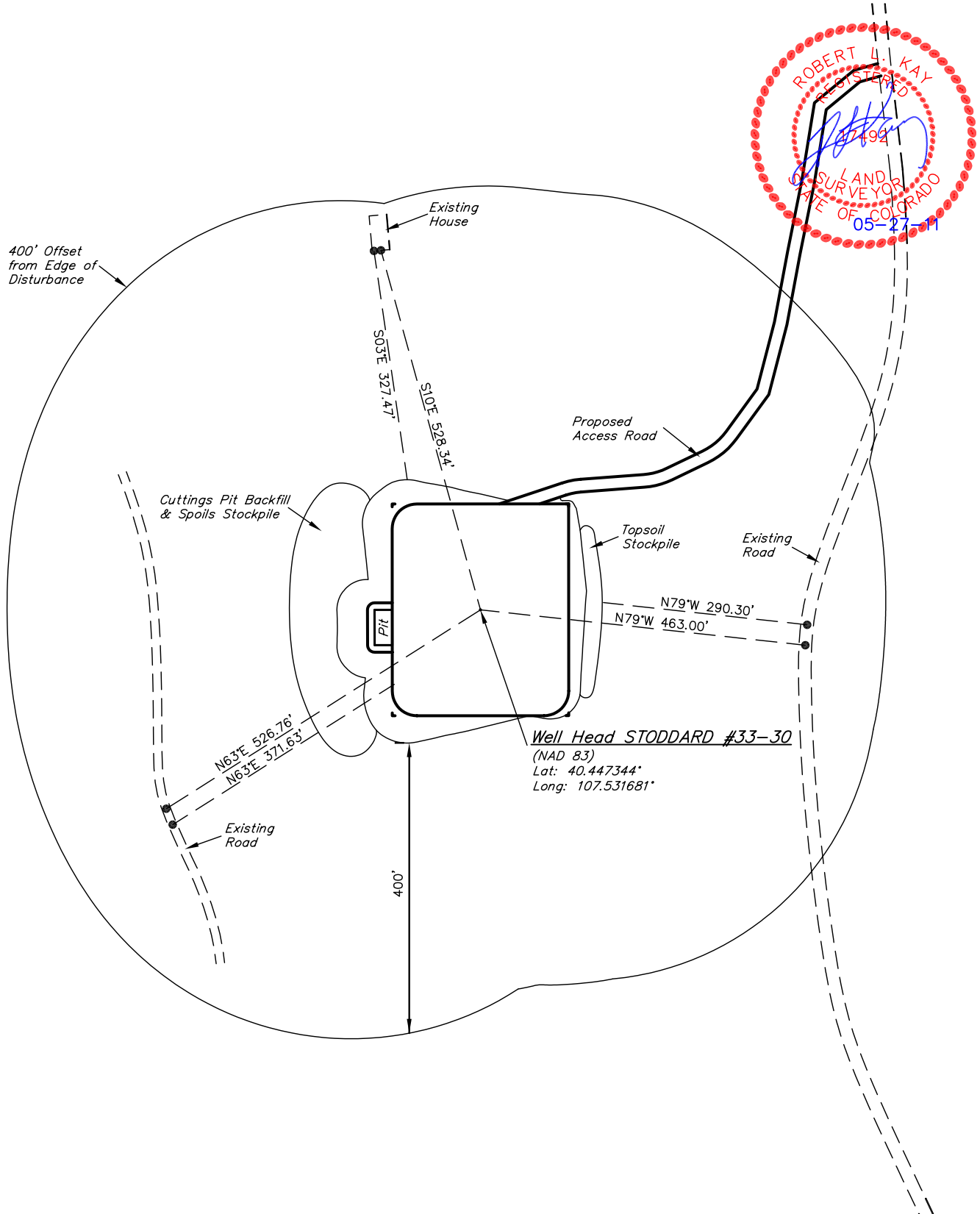
2160' FSL 2016' FEL

SCALE: 1" = 200'

DATE: 05-05-11

DRAWN BY: J.I.

REV.: 05-25-11 J.I.



UINTAH ENGINEERING & LAND SURVEYING

85 So. 200 East * Vernal, Utah 84078 * (435) 789-1017