

Well Name: **Wildflower 37-27**

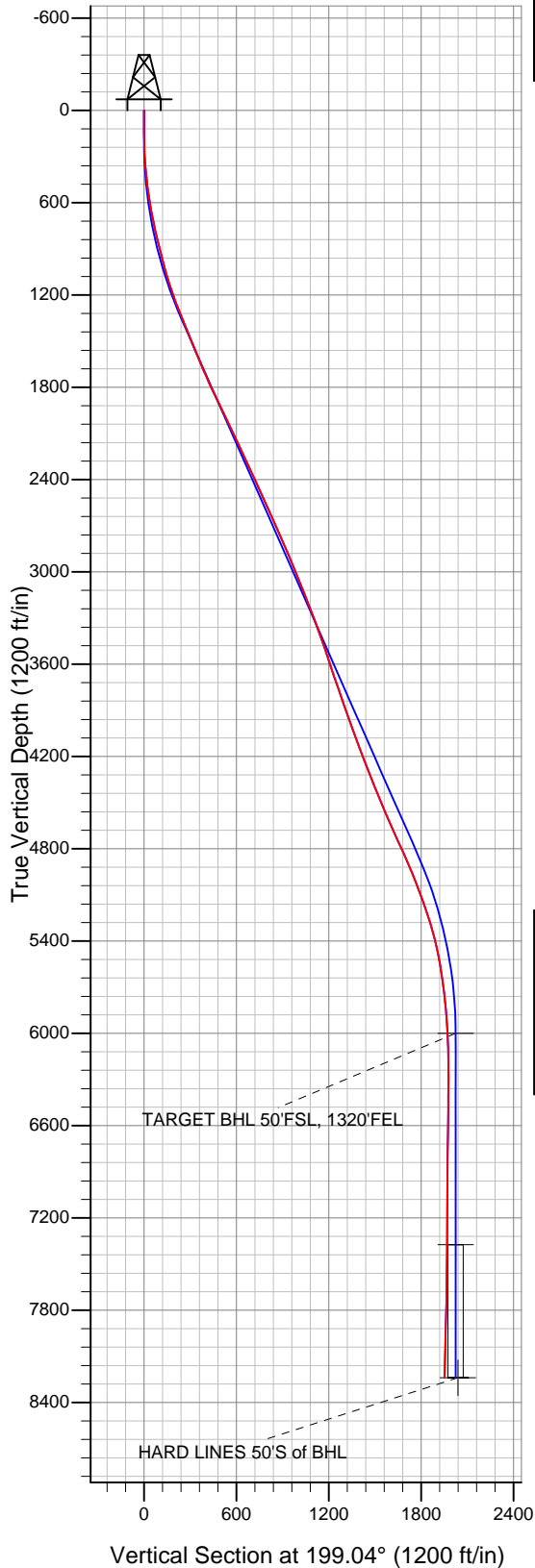
Surface Location: Wildflower 9-27 Pad Sec.27-T2N-R68W
 North American Datum 1983 US State Plane 1983 Colorado Northern Zone

Ground Elevation: 4969.0

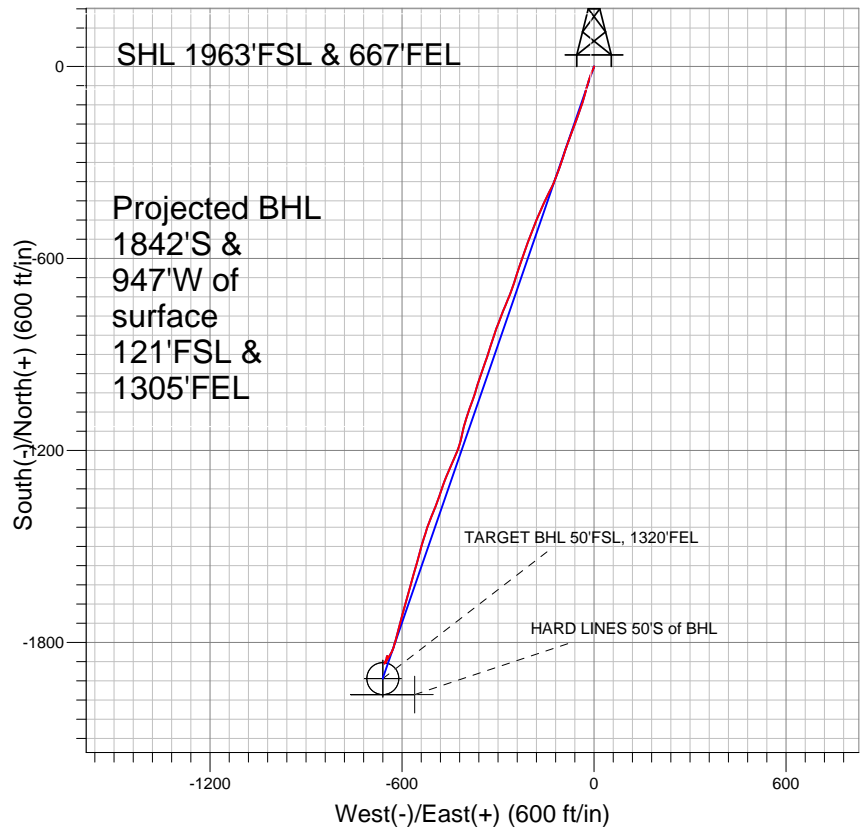
+N/-S	+E/-W	Northing	Easting	Latitude	Longitude
0.0	0.0	1282487.56	3144820.00	40.107660	-104.982249

Original Well Elev WELL @ 4984.0ft (Original Well Elev)

Slot



Anadarko, Weld County CO



LEGEND

- ◆ Wildflower 37-27, Wellbore #1, Plan #1 (2-04-11) V0
- Wellbore #1
- Survey #1

Final Survey Plot

Projected Final Survey -
 8605'MD & 8240'TVD @ 1952' VS
 1.4 deg Inc 14.2 deg AZ

Project: SEC.27-T2N-R68W
 Site: Wildflower 9-27 Pad Sec.27-T2N-R68W
 Well: Wildflower 37-27
 Plan: Wellbore #1



Anadarko, Weld County CO

SEC.27-T2N-R68W

Wildflower 9-27 Pad Sec.27-T2N-R68W

Wildflower 37-27

Wellbore #1

Survey: Survey #1

Standard Survey Report

28 February, 2011



Company:	Anadarko, Weld County CO	Local Co-ordinate Reference:	Well Wildflower 37-27
Project:	SEC.27-T2N-R68W	TVD Reference:	WELL @ 4984.0ft (Original Well Elev)
Site:	Wildflower 9-27 Pad Sec.27-T2N-R68W	MD Reference:	WELL @ 4984.0ft (Original Well Elev)
Well:	Wildflower 37-27	North Reference:	True
Wellbore:	Wellbore #1	Survey Calculation Method:	Minimum Curvature
Design:	Wellbore #1	Database:	Landmark

Project	SEC.27-T2N-R68W, Weld County, Colorado		
Map System:	US State Plane 1983	System Datum:	Mean Sea Level
Geo Datum:	North American Datum 1983		Using Well Reference Point
Map Zone:	Colorado Northern Zone		Using geodetic scale factor

Site		Wildflower 9-27 Pad Sec.27-T2N-R68W				
Site Position:		Northing:	1,282,487.63ft	Latitude:	40.107660	
From:	Lat/Long	Easting:	3,144,830.06ft	Longitude:	-104.982213	
Position Uncertainty:		0.0 ft	Slot Radius:	"	Grid Convergence:	0.33 °

Well	Wildflower 37-27					
Well Position	+N-S	0.0 ft	Northing:	1,282,487.56 ft	Latitude:	40.107660
	+E-W	0.0 ft	Easting:	3,144,820.00 ft	Longitude:	-104.982249
Position Uncertainty		0.0 ft	Wellhead Elevation:	ft	Ground Level:	4,969.0 ft

Wellbore	Wellbore #1				
Magnetics	Model Name	Sample Date	Declination (°)	Dip Angle (°)	Field Strength (nT)
	IGRF2010	2/4/2011	9.00	66.79	52,990

Design	Wellbore #1				
Audit Notes:					
Version:	1.0	Phase:	ACTUAL	Tie On Depth:	0.0
Vertical Section:	Depth From (TVD) (ft)	+N/-S (ft)	+E/-W (ft)	Direction (°)	
	0.0	0.0	0.0	199.04	

Survey Program	Date	2/28/2011			
From (ft)	To (ft)	Survey (Wellbore)	Tool Name	Description	
144.0	8,605.0	Survey #1 (Wellbore #1)	MWD	MWD - Standard	

Survey										
Measured Depth (ft)	Inclination (°)	Azimuth (°)	Vertical Depth (ft)	+N/-S (ft)	+E/-W (ft)	Vertical Section (ft)	Dogleg Rate (°/100ft)	Build Rate (°/100ft)	Turn Rate (°/100ft)	
0.0	0.00	0.00	0.0	0.0	0.0	0.0	0.00	0.00	0.00	
144.0	0.40	184.40	144.0	-0.5	0.0	0.5	0.28	0.28	0.00	
233.0	1.80	200.50	233.0	-2.1	-0.6	2.2	1.60	1.57	18.09	
325.0	3.30	200.30	324.9	-6.0	-2.0	6.3	1.63	1.63	-0.22	
417.0	5.50	205.30	416.6	-12.4	-4.8	13.3	2.43	2.39	5.43	
508.0	7.70	201.50	507.0	-22.0	-8.9	23.7	2.46	2.42	-4.18	
601.0	9.40	198.50	599.0	-35.0	-13.6	37.6	1.89	1.83	-3.23	
693.0	11.30	196.80	689.5	-50.8	-18.6	54.1	2.09	2.07	-1.85	
787.0	13.00	195.40	781.4	-69.8	-24.0	73.8	1.84	1.81	-1.49	
864.0	13.50	195.00	856.3	-86.8	-28.7	91.4	0.66	0.65	-0.52	
959.0	14.20	196.90	948.5	-108.7	-34.9	114.1	0.88	0.74	2.00	
1,054.0	15.70	199.70	1,040.3	-132.0	-42.6	138.6	1.75	1.58	2.95	
1,150.0	17.80	199.20	1,132.2	-158.0	-51.8	166.3	2.19	2.19	-0.52	

Company:	Anadarko, Weld County CO	Local Co-ordinate Reference:	Well Wildflower 37-27
Project:	SEC.27-T2N-R68W	TVD Reference:	WELL @ 4984.0ft (Original Well Elev)
Site:	Wildflower 9-27 Pad Sec.27-T2N-R68W	MD Reference:	WELL @ 4984.0ft (Original Well Elev)
Well:	Wildflower 37-27	North Reference:	True
Wellbore:	Wellbore #1	Survey Calculation Method:	Minimum Curvature
Design:	Wellbore #1	Database:	Landmark

Survey

Measured Depth (ft)	Inclination (°)	Azimuth (°)	Vertical Depth (ft)	+N/-S (ft)	+E/-W (ft)	Vertical Section (ft)	Dogleg Rate (°/100ft)	Build Rate (°/100ft)	Turn Rate (°/100ft)
1,245.0	20.00	201.80	1,222.1	-186.8	-62.7	197.1	2.48	2.32	2.74
1,340.0	21.80	199.00	1,310.9	-218.6	-74.4	230.9	2.17	1.89	-2.95
1,435.0	22.00	198.90	1,399.0	-252.1	-85.9	266.4	0.21	0.21	-0.11
1,530.0	22.70	198.50	1,486.9	-286.3	-97.5	302.5	0.75	0.74	-0.42
1,626.0	22.60	199.50	1,575.5	-321.3	-109.6	339.5	0.41	-0.10	1.04
1,721.0	22.40	201.90	1,663.2	-355.3	-122.4	375.8	0.99	-0.21	2.53
1,816.0	24.20	206.80	1,750.5	-389.5	-137.9	413.2	2.78	1.89	5.16
1,911.0	25.60	205.40	1,836.7	-425.4	-155.5	452.9	1.60	1.47	-1.47
2,007.0	25.80	204.30	1,923.2	-463.2	-173.0	494.3	0.54	0.21	-1.15
2,103.0	25.50	200.60	2,009.7	-501.6	-188.9	535.7	1.70	-0.31	-3.85
2,199.0	25.50	199.40	2,096.4	-540.4	-203.0	577.1	0.54	0.00	-1.25
2,294.0	26.30	200.40	2,181.8	-579.4	-217.1	618.5	0.96	0.84	1.05
2,389.0	25.30	199.30	2,267.4	-618.3	-231.2	659.9	1.17	-1.05	-1.16
2,484.0	24.80	196.80	2,353.4	-656.5	-243.7	700.1	1.23	-0.53	-2.63
2,580.0	24.00	199.50	2,440.8	-694.2	-256.0	739.7	1.43	-0.83	2.81
2,675.0	23.90	203.20	2,527.7	-730.1	-270.0	778.3	1.58	-0.11	3.89
2,770.0	23.20	201.00	2,614.8	-765.3	-284.3	816.2	1.18	-0.74	-2.32
2,865.0	24.60	201.70	2,701.6	-801.1	-298.3	854.6	1.50	1.47	0.74
2,960.0	24.20	197.60	2,788.1	-838.0	-311.5	893.8	1.83	-0.42	-4.32
3,056.0	22.80	198.20	2,876.2	-874.5	-323.3	932.1	1.48	-1.46	0.63
3,151.0	22.10	198.80	2,964.0	-908.9	-334.8	968.4	0.78	-0.74	0.63
3,246.0	23.30	199.80	3,051.6	-943.5	-346.9	1,005.0	1.33	1.26	1.05
3,341.0	21.70	198.10	3,139.4	-977.9	-358.7	1,041.4	1.82	-1.68	-1.79
3,436.0	20.90	195.90	3,227.9	-1,010.8	-368.8	1,075.9	1.19	-0.84	-2.32
3,531.0	19.50	200.30	3,317.0	-1,042.0	-379.0	1,108.6	2.17	-1.47	4.63
3,626.0	20.00	199.10	3,406.5	-1,072.2	-389.8	1,140.7	0.68	0.53	-1.26
3,721.0	19.60	198.80	3,495.8	-1,102.7	-400.2	1,172.9	0.43	-0.42	-0.32
3,817.0	18.40	191.60	3,586.6	-1,132.8	-408.5	1,204.0	2.74	-1.25	-7.50
3,912.0	18.80	192.90	3,676.7	-1,162.4	-414.9	1,234.1	0.61	0.42	1.37
4,007.0	18.70	200.30	3,766.6	-1,191.6	-423.6	1,264.6	2.50	-0.11	7.79
4,102.0	19.40	203.70	3,856.4	-1,220.3	-435.2	1,295.5	1.38	0.74	3.58
4,197.0	19.70	203.20	3,946.0	-1,249.5	-447.9	1,327.2	0.36	0.32	-0.53
4,292.0	19.90	203.60	4,035.3	-1,279.0	-460.7	1,359.3	0.25	0.21	0.42
4,387.0	20.00	197.80	4,124.6	-1,309.3	-472.1	1,391.7	2.08	0.11	-6.11
4,483.0	21.60	199.40	4,214.4	-1,341.6	-483.0	1,425.8	1.77	1.67	1.67
4,578.0	22.00	201.30	4,302.6	-1,374.7	-495.3	1,461.0	0.85	0.42	2.00
4,673.0	22.30	202.10	4,390.6	-1,407.9	-508.5	1,496.8	0.45	0.32	0.84
4,768.0	22.20	199.50	4,478.5	-1,441.6	-521.3	1,532.8	1.04	-0.11	-2.74
4,863.0	21.60	196.80	4,566.7	-1,475.2	-532.3	1,568.2	1.23	-0.63	-2.84
4,958.0	24.90	195.10	4,653.9	-1,511.3	-542.6	1,605.6	3.54	3.47	-1.79
5,053.0	25.40	196.10	4,739.9	-1,550.2	-553.5	1,645.9	0.69	0.53	1.05
5,148.0	23.40	195.60	4,826.4	-1,587.9	-564.2	1,685.1	2.12	-2.11	-0.53
5,243.0	22.90	194.60	4,913.8	-1,624.0	-573.9	1,722.4	0.67	-0.53	-1.05
5,339.0	21.70	196.80	5,002.6	-1,659.0	-583.8	1,758.7	1.52	-1.25	2.29
5,434.0	20.70	194.60	5,091.2	-1,692.1	-593.1	1,793.0	1.34	-1.05	-2.32
5,529.0	19.50	195.80	5,180.4	-1,723.6	-601.6	1,825.6	1.34	-1.26	1.26
5,624.0	17.10	194.90	5,270.6	-1,752.4	-609.5	1,855.3	2.54	-2.53	-0.95
5,719.0	14.60	193.80	5,362.0	-1,777.5	-616.0	1,881.2	2.65	-2.63	-1.16
5,814.0	12.70	195.90	5,454.3	-1,799.2	-621.7	1,903.6	2.07	-2.00	2.21
5,909.0	9.70	198.10	5,547.5	-1,816.8	-627.0	1,922.0	3.19	-3.16	2.32
6,005.0	8.00	204.10	5,642.3	-1,830.6	-632.3	1,936.7	2.01	-1.77	6.25
6,100.0	7.10	215.20	5,736.5	-1,841.4	-638.4	1,949.0	1.80	-0.95	11.68
6,195.0	5.10	212.10	5,831.0	-1,849.8	-644.0	1,958.7	2.13	-2.11	-3.26
6,290.0	4.90	209.00	5,925.6	-1,856.9	-648.2	1,966.8	0.35	-0.21	-3.26

Company:	Anadarko, Weld County CO	Local Co-ordinate Reference:	Well Wildflower 37-27
Project:	SEC.27-T2N-R68W	TVD Reference:	WELL @ 4984.0ft (Original Well Elev)
Site:	Wildflower 9-27 Pad Sec.27-T2N-R68W	MD Reference:	WELL @ 4984.0ft (Original Well Elev)
Well:	Wildflower 37-27	North Reference:	True
Wellbore:	Wellbore #1	Survey Calculation Method:	Minimum Curvature
Design:	Wellbore #1	Database:	Landmark

Survey									
Measured Depth (ft)	Inclination (°)	Azimuth (°)	Vertical Depth (ft)	+N/-S (ft)	+E/-W (ft)	Vertical Section (ft)	Dogleg Rate (°/100ft)	Build Rate (°/100ft)	Turn Rate (°/100ft)
6,367.8	3.01	215.50	6,003.2	-1,861.5	-651.0	1,972.0	2.49	-2.43	8.35
TARGET BHL 50°FSL, 1320°FEL									
6,385.0	2.60	218.20	6,020.4	-1,862.2	-651.5	1,972.8	2.49	-2.37	15.70
6,480.0	1.20	220.60	6,115.3	-1,864.6	-653.5	1,975.8	1.48	-1.47	2.53
6,576.0	0.80	233.70	6,211.3	-1,865.8	-654.7	1,977.3	0.48	-0.42	13.65
6,671.0	0.40	0.50	6,306.3	-1,865.9	-655.2	1,977.5	1.15	-0.42	133.47
6,766.0	0.50	37.60	6,401.3	-1,865.2	-655.0	1,976.8	0.32	0.11	39.05
6,861.0	0.50	38.40	6,496.3	-1,864.5	-654.4	1,976.0	0.01	0.00	0.84
6,956.0	0.90	42.10	6,591.3	-1,863.7	-653.7	1,975.0	0.42	0.42	3.89
7,051.0	0.90	43.20	6,686.3	-1,862.6	-652.7	1,973.6	0.02	0.00	1.16
7,147.0	1.00	31.60	6,782.3	-1,861.3	-651.7	1,972.1	0.23	0.10	-12.08
7,242.0	1.10	25.90	6,877.3	-1,859.8	-650.9	1,970.4	0.15	0.11	-6.00
7,337.0	0.30	201.70	6,972.3	-1,859.2	-650.6	1,969.7	1.47	-0.84	185.05
7,432.0	0.40	210.30	7,067.2	-1,859.7	-650.8	1,970.3	0.12	0.11	9.05
7,527.0	0.20	350.10	7,162.2	-1,859.8	-651.0	1,970.5	0.60	-0.21	147.16
7,622.0	0.40	344.60	7,257.2	-1,859.3	-651.2	1,970.0	0.21	0.21	-5.79
7,718.0	0.40	358.50	7,353.2	-1,858.7	-651.3	1,969.5	0.10	0.00	14.48
7,739.2	0.46	5.90	7,374.5	-1,858.5	-651.2	1,969.3	0.38	0.28	34.83
TARGET CIRCLE 50°FSL & 1320°FEL									
7,813.0	0.70	20.70	7,448.2	-1,857.8	-651.1	1,968.6	0.38	0.33	20.07
7,908.0	1.00	17.70	7,543.2	-1,856.5	-650.6	1,967.2	0.32	0.32	-3.16
8,003.0	1.10	23.10	7,638.2	-1,854.9	-650.0	1,965.4	0.15	0.11	5.68
8,098.0	1.20	22.70	7,733.2	-1,853.1	-649.3	1,963.5	0.11	0.11	-0.42
8,194.0	1.20	15.70	7,829.2	-1,851.2	-648.6	1,961.5	0.15	0.00	-7.29
8,290.0	1.10	4.70	7,925.2	-1,849.3	-648.2	1,959.6	0.25	-0.10	-11.46
8,385.0	1.40	9.80	8,020.1	-1,847.3	-648.0	1,957.6	0.34	0.32	5.37
8,479.0	1.30	18.10	8,114.1	-1,845.1	-647.4	1,955.4	0.23	-0.11	8.83
8,555.0	1.40	14.20	8,190.1	-1,843.4	-646.9	1,953.6	0.18	0.13	-5.13
8,602.6	1.40	14.20	8,237.7	-1,842.3	-646.7	1,952.4	0.00	0.00	0.00
HARD LINES 50'S of BHL									
8,605.0	1.40	14.20	8,240.1	-1,842.2	-646.6	1,952.4	0.00	0.00	0.00

Checked By: _____	Approved By: _____	Date: _____
-------------------	--------------------	-------------