

# HALLIBURTON

## CEMENT BOND LOG

SCALE: 5"=100'

Company ENCANA OIL & GAS USA INC.  
Well BAKER 6-4-27  
Field WATTENBERG  
County WELD State CO

Company ENCANA OIL & GAS USA INC.  
Well BAKER 6-4-27  
Field WATTENBERG  
County WELD State CO

API No.: 05-014-20695-00 Serv #: 7871779  
Location: SHL: 1962' FNL & 2158' FEL SW NE  
BHL: 2590' FNL & 1200' FEL SE NE

Other Services

NONE

Sec: 27 Twp: 1N Rge: 68W

GROUND LEVEL Elevation 5227

KB , 13 Ft. above perm. datum

Elevation  
K.B. 5240  
D.F. 5240  
G.L. 52273

Date @ Time Logged

Run No.

Depth - Driller

Depth - Logger

Bottom - Logged Interval

Top - Log Interval

Max. Recorded Temp.

CEMENTING DATA

Date / Time Cemented

Primary / Squeeze

Expected

Compressive Strength

Cement Volume

Cement Type / Weight

Formulation

Mud Type / Mud Wgt.

Run Number

ONE

31-DEC-2010

ONE

8770

8729

8716

3500

251 F

Surface

String

String

String

String

String

String

String

String

String

String

Type Fluid in Hole

Density of Fluid

Fluid Level

Cement Top Est. Logged

Equipment / Location

Recorded by

Witnessed by

Production

String

String

String

String

String

String

String

String

String

FRESH WATER

8.33

800

3865

11014931 / BRIGHTON

M. BRECKENFELD

TOM FLYNN

Liner

Liner

Liner

Liner

Liner

Liner

Liner

Liner

Liner

Liner

FRESH WATER

8.33

800

3865

11014931 / BRIGHTON

M. BRECKENFELD

TOM FLYNN

Liner

Liner

Liner

Liner

Liner

Liner

Liner

Liner

Liner

Liner

FRESH WATER

8.33

800

3865

11014931 / BRIGHTON

M. BRECKENFELD

TOM FLYNN

Liner

Liner

Liner

Liner

Liner

Liner

Liner

Liner

Liner

Liner

FRESH WATER

8.33

800

3865

11014931 / BRIGHTON

M. BRECKENFELD

TOM FLYNN

Liner

Liner

Liner

Liner

Liner

Liner

Liner

Liner

Liner

Liner

FRESH WATER

8.33

800

3865

11014931 / BRIGHTON

M. BRECKENFELD

TOM FLYNN

Liner

Liner

Liner

Liner

Liner

Liner

Liner

Liner

Liner

Liner

FRESH WATER

8.33

800

3865

11014931 / BRIGHTON

M. BRECKENFELD

TOM FLYNN

Liner

Liner

Liner

Liner

Liner

Liner

Liner

Liner

Liner

Liner

FRESH WATER

8.33

800

3865

11014931 / BRIGHTON

M. BRECKENFELD

TOM FLYNN

Liner

Liner

Liner

Liner

Liner

Liner

Liner

Liner

Liner

Liner

FRESH WATER

8.33

800

3865

11014931 / BRIGHTON

M. BRECKENFELD

TOM FLYNN

Liner

Liner

Liner

Liner

Liner

Liner

Liner

Liner

Liner

Liner

FRESH WATER

8.33

800

3865

11014931 / BRIGHTON

M. BRECKENFELD

TOM FLYNN

Liner

Liner

Liner

Liner

Liner

Liner

Liner

Liner

Liner

Liner

FRESH WATER

8.33

800

3865

11014931 / BRIGHTON

M. BRECKENFELD

TOM FLYNN

Liner

Liner

Liner

Liner

Liner

Liner

Liner

Liner

Liner

Liner

FRESH WATER

8.33

800

3865

11014931 / BRIGHTON

M. BRECKENFELD

TOM FLYNN

Liner

Liner

Liner

Liner

Liner

Liner

Liner

Liner

Liner

Liner

FRESH WATER

8.33

800

3865

11014931 / BRIGHTON

M. BRECKENFELD

TOM FLYNN

Liner

Liner

Liner

Liner

Liner

Liner

Liner

Liner

Liner

Liner

FRESH WATER

8.33

800

3865

11014931 / BRIGHTON

M. BRECKENFELD

TOM FLYNN

Liner

Liner

Liner

Liner

Liner

Liner

Liner

Liner

Liner

Liner

FRESH WATER

8.33

800

3865

11014931 / BRIGHTON

M. BRECKENFELD

TOM FLYNN

Liner

Liner

Liner

Liner

Liner

Liner

Liner

Liner

Liner

Liner

FRESH WATER

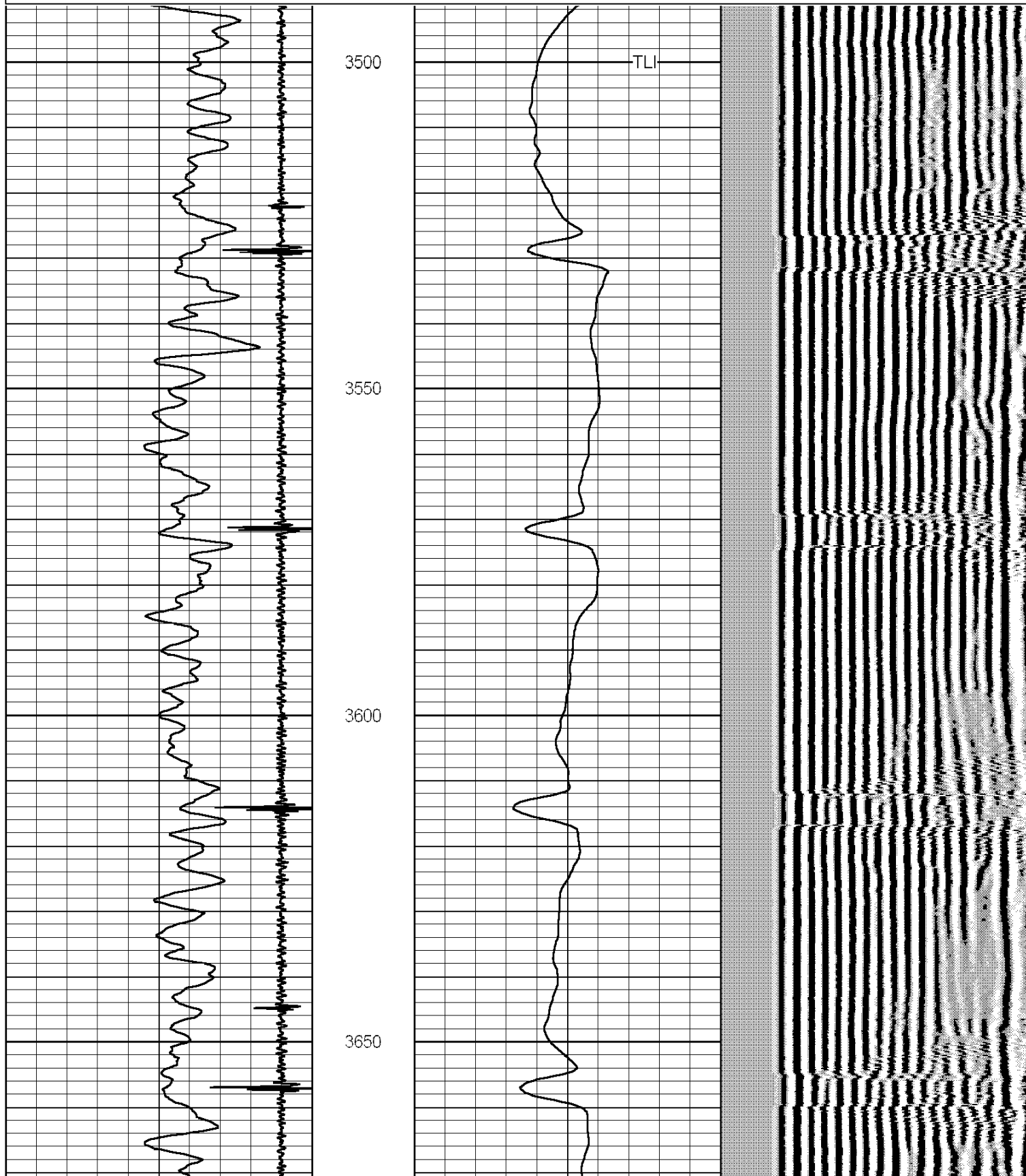
8.33

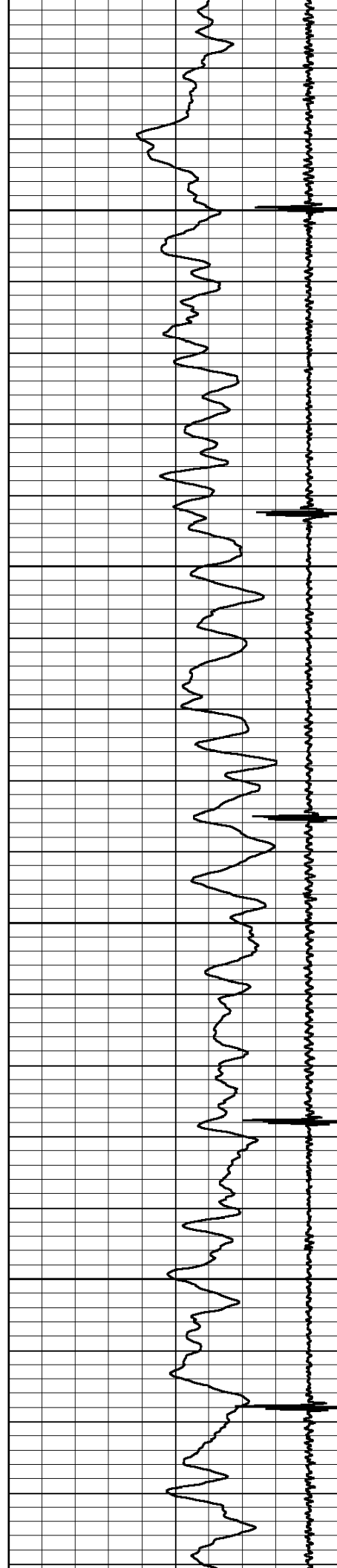
800

3865

Database File: encana\_baker\_6-4-27\_cbl.db  
Dataset Pathname: pass4  
Presentation Format: 1kacbl  
Dataset Creation: Thu Sep 30 10:41:05 2010 by Log Halliburton Casedho  
Charted by: Depth in Feet scaled 1:240

9	Collar Locator	-1	LSPD	0	Amplified Amplitude (mV)	10	200	Variable Density	1200
0	Gamma Ray (GAPI)	200	(ft/min)	0	Amplitude (mV)	100			
			0 100						



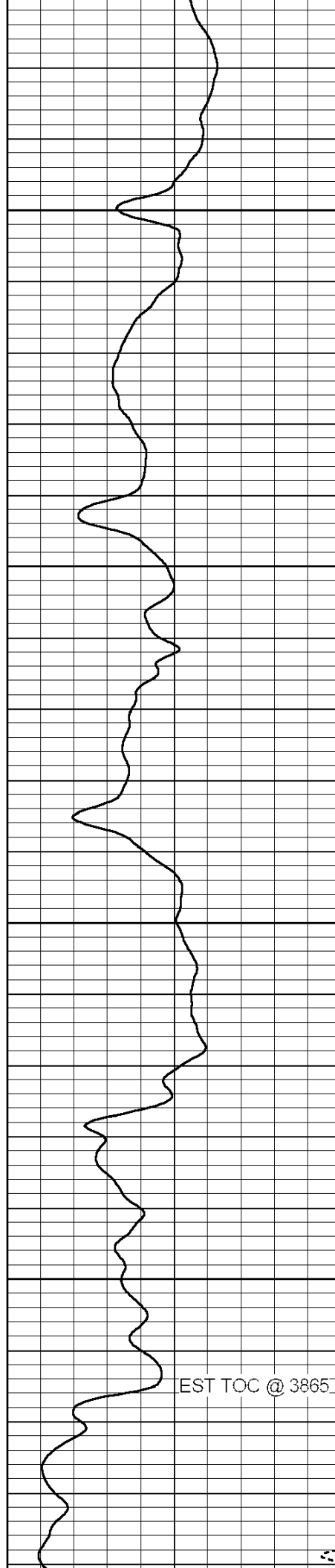


3700

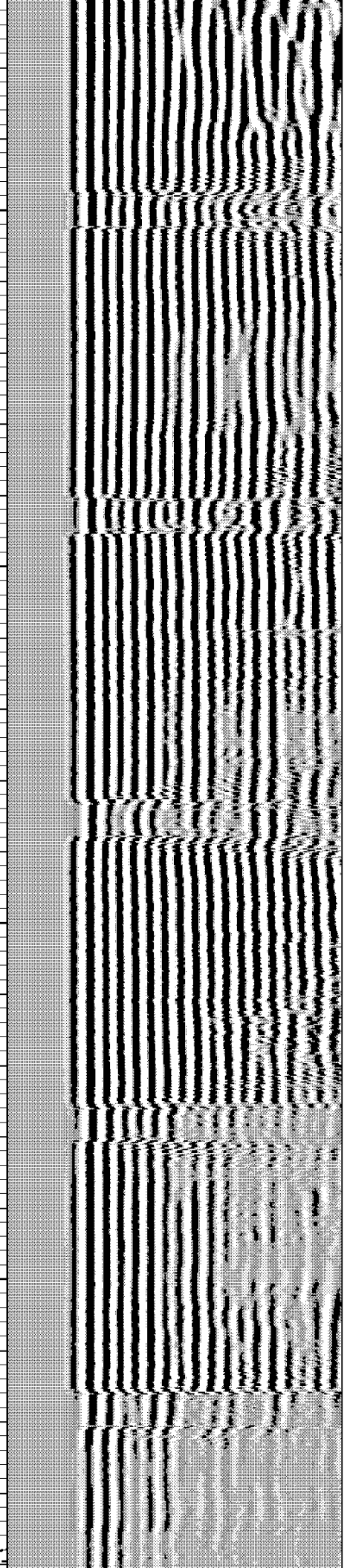
3750

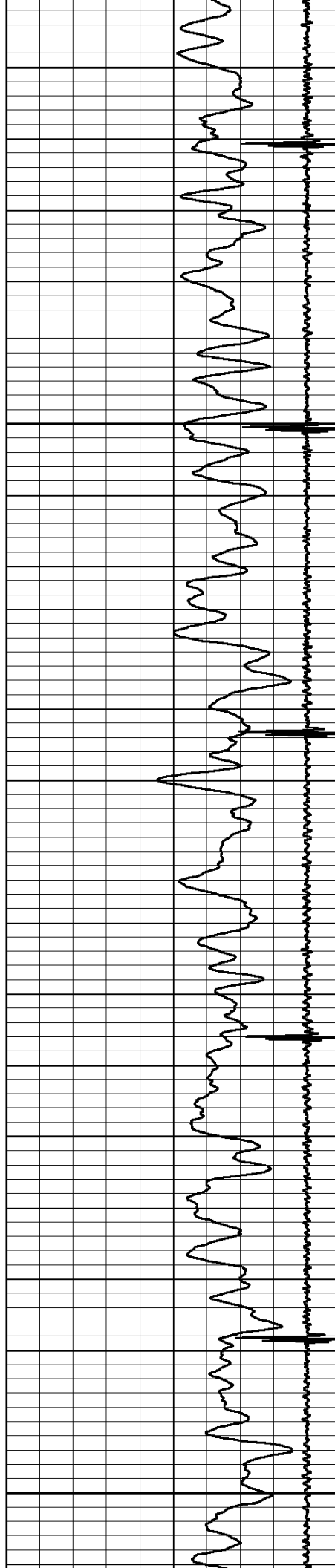
3800

3850



EST TOC @ 3865





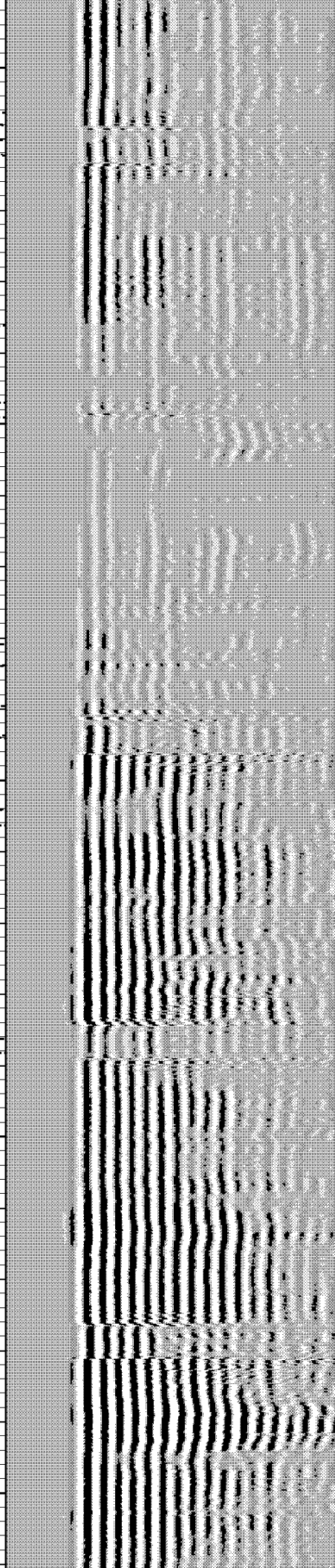
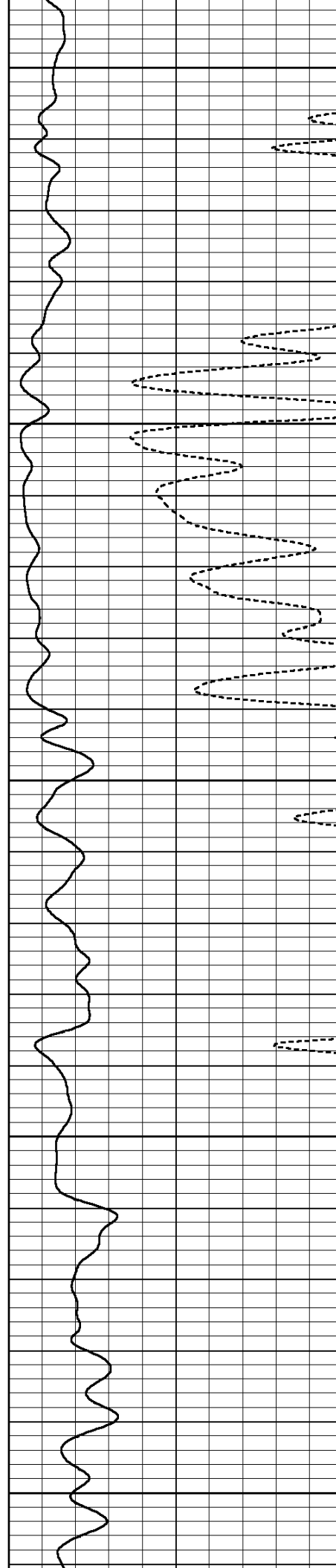
3900

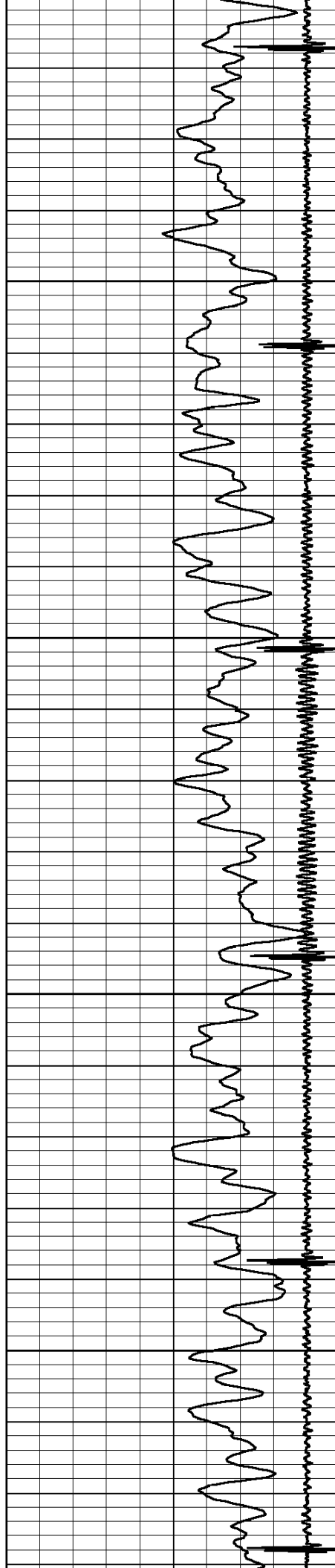
3950

4000

4050

4100



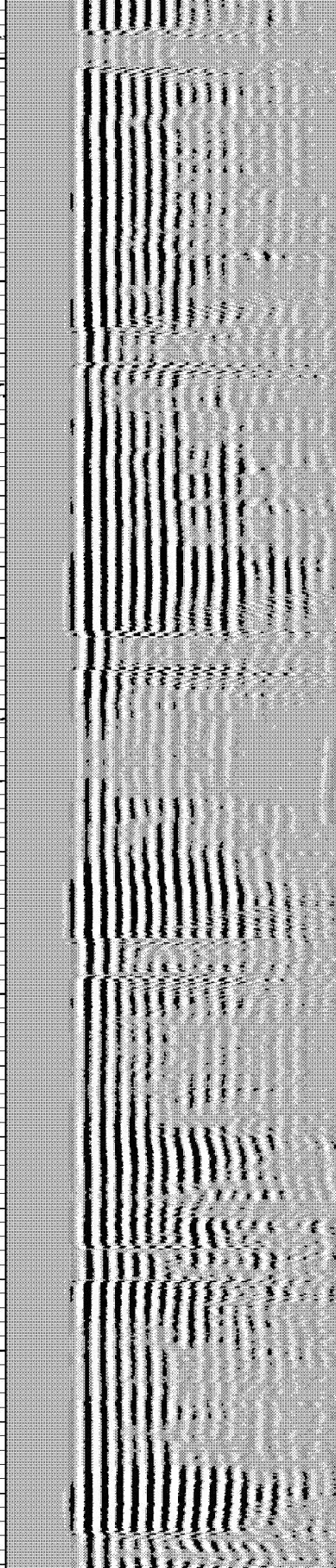
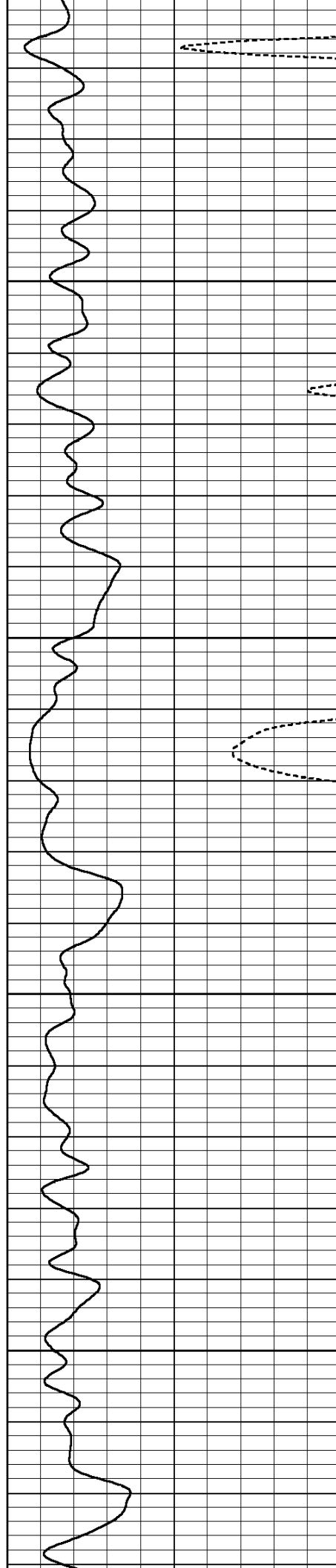


4150

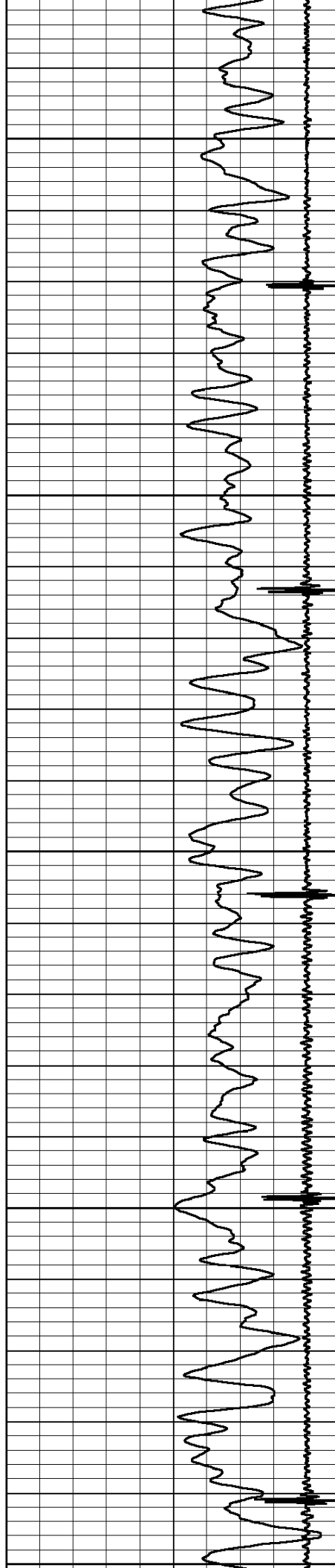
4200

4250

4300







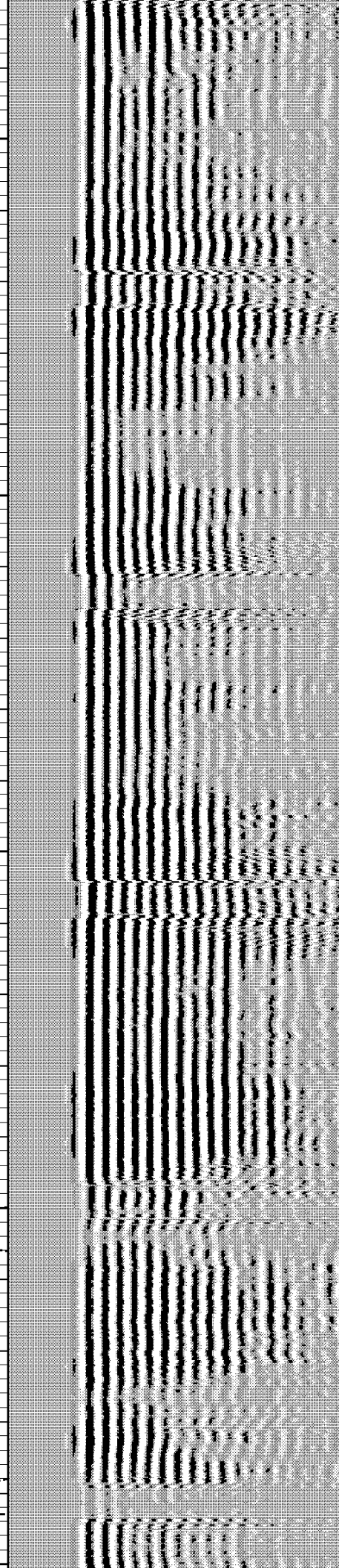
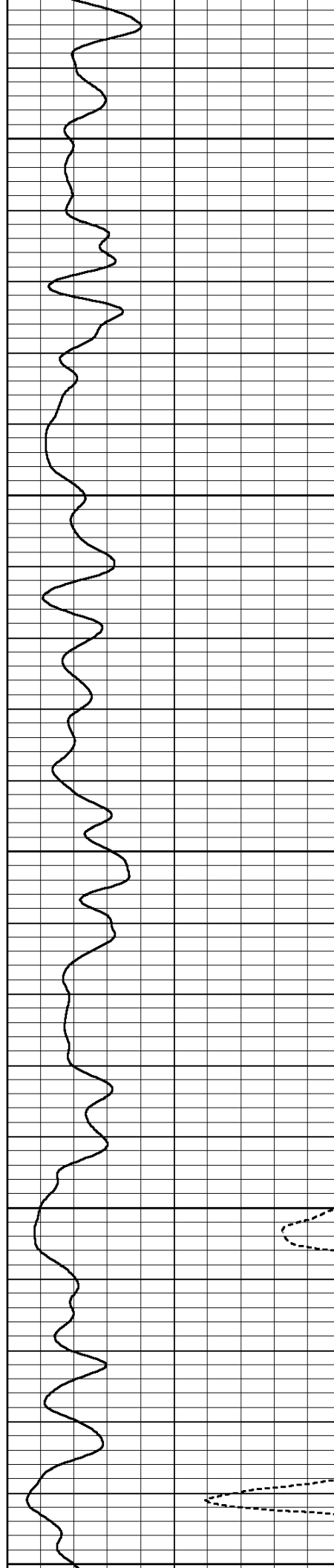
4350

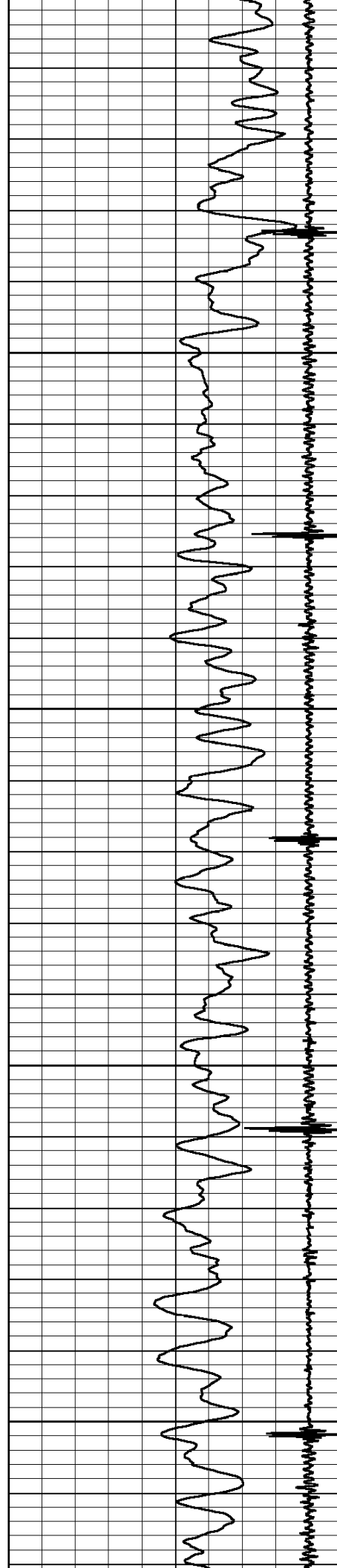
4400

4450

4500

4550





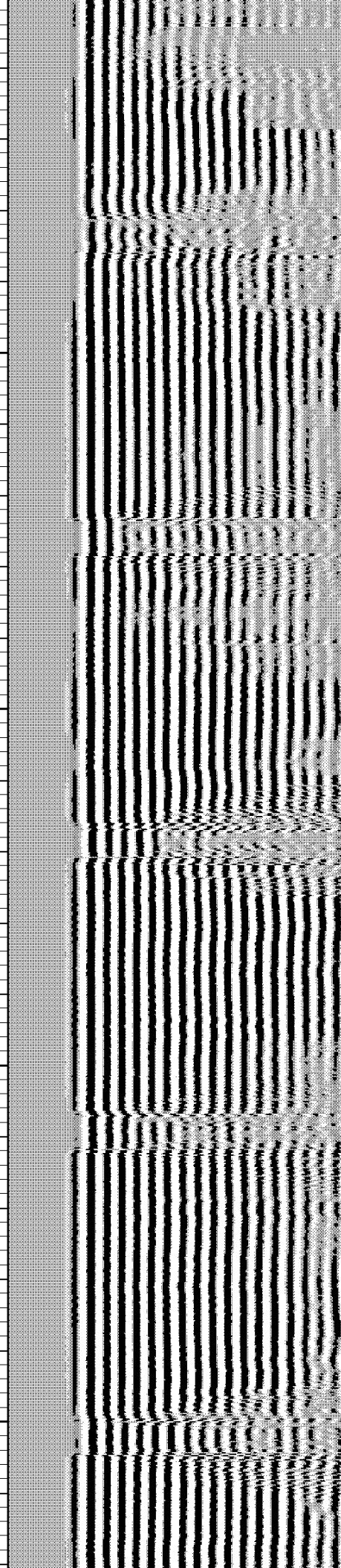
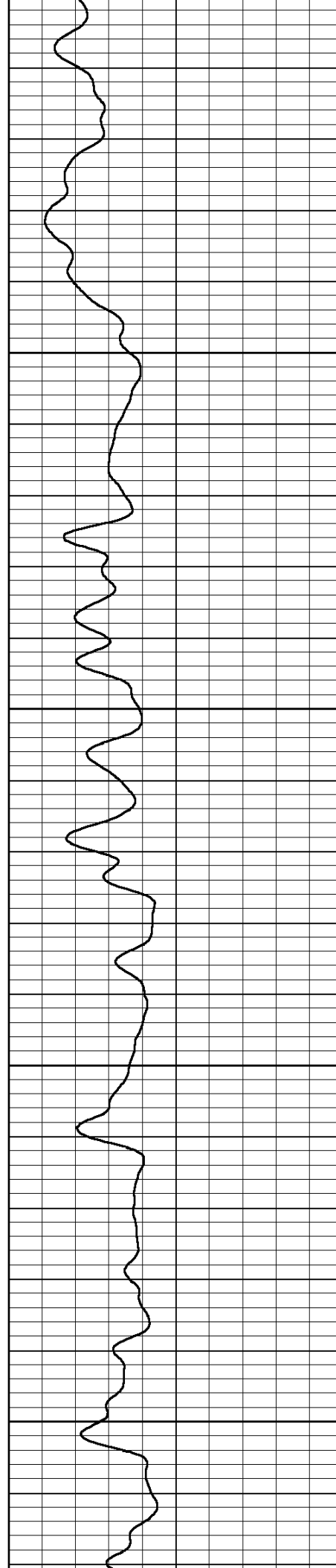
4550

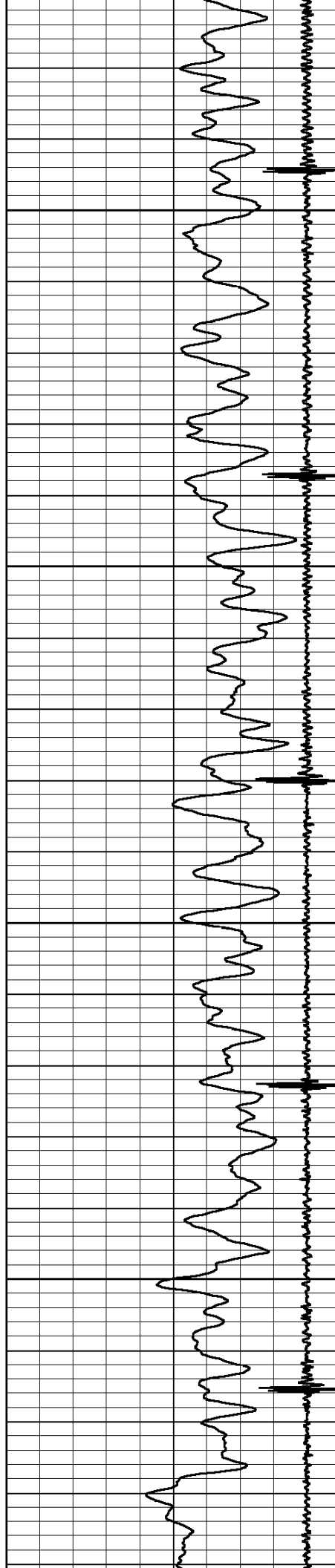
4600

4650

4700

4750



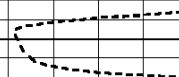
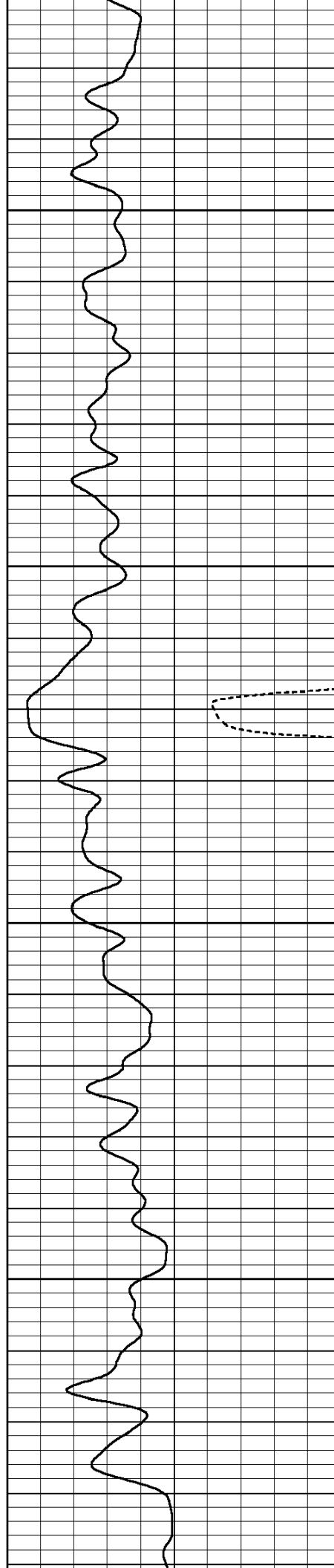


4800

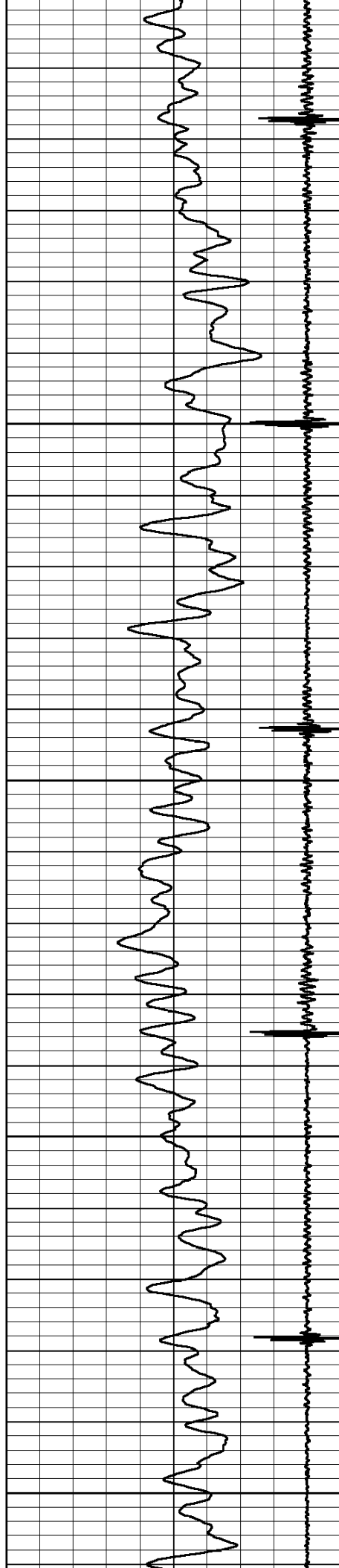
4850

4900

4950







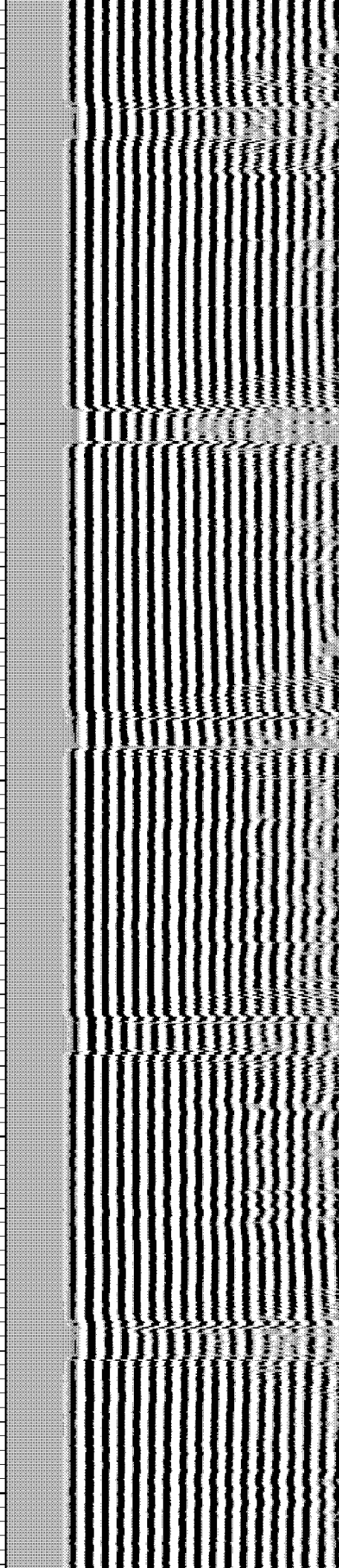
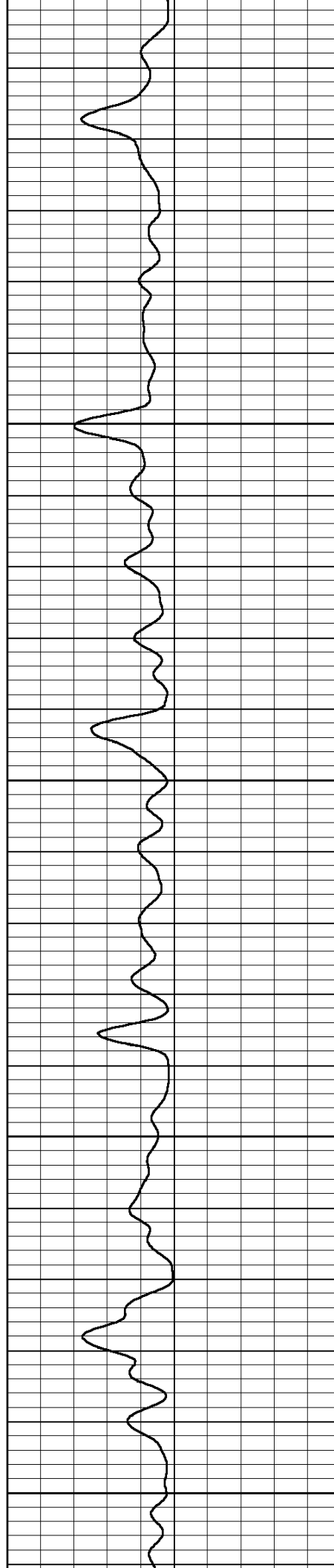
5000

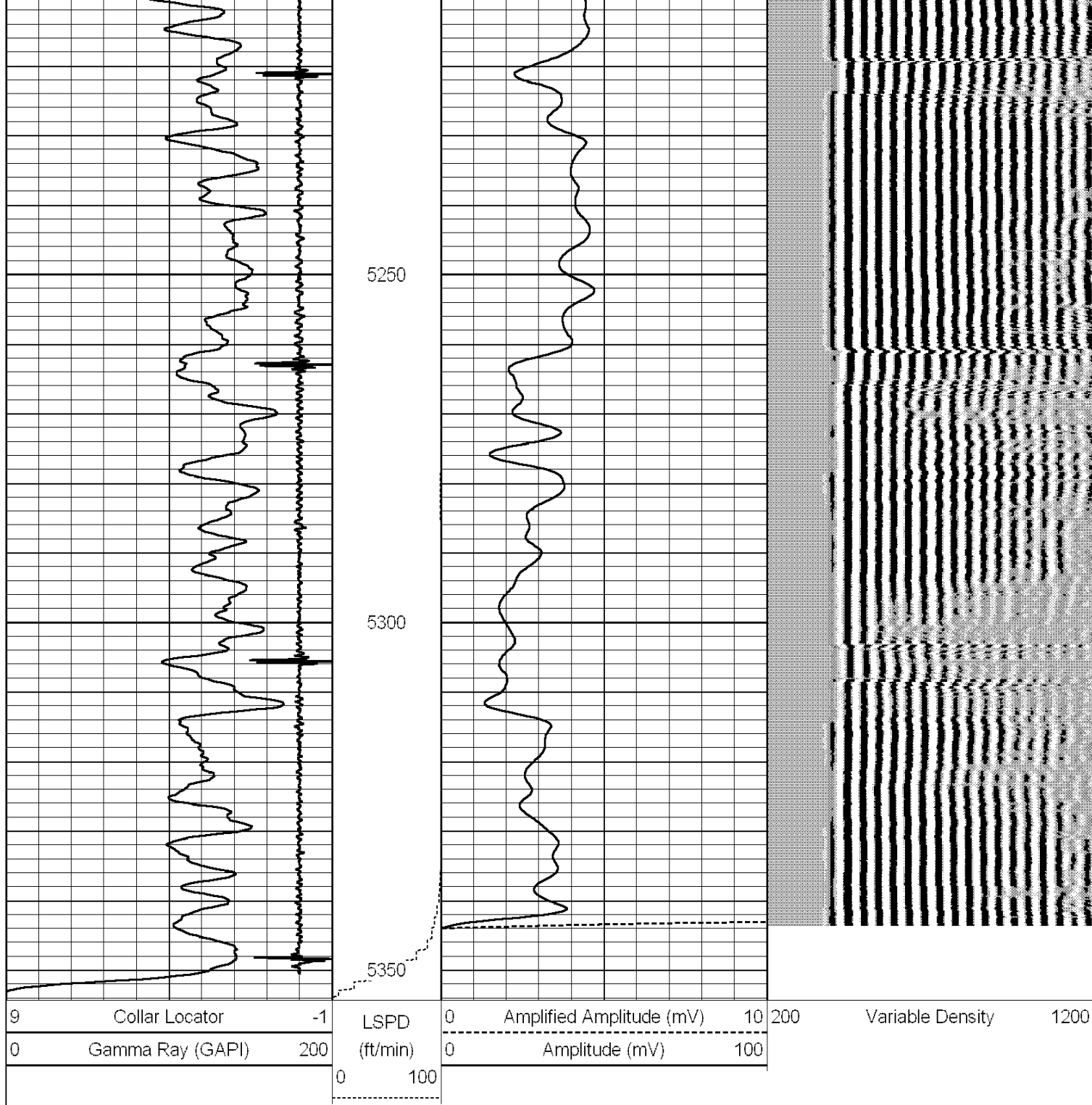
5050

5100

5150

5200





## SUSSEX PASS

HALLIBURTON

SCALE: 5"=100'

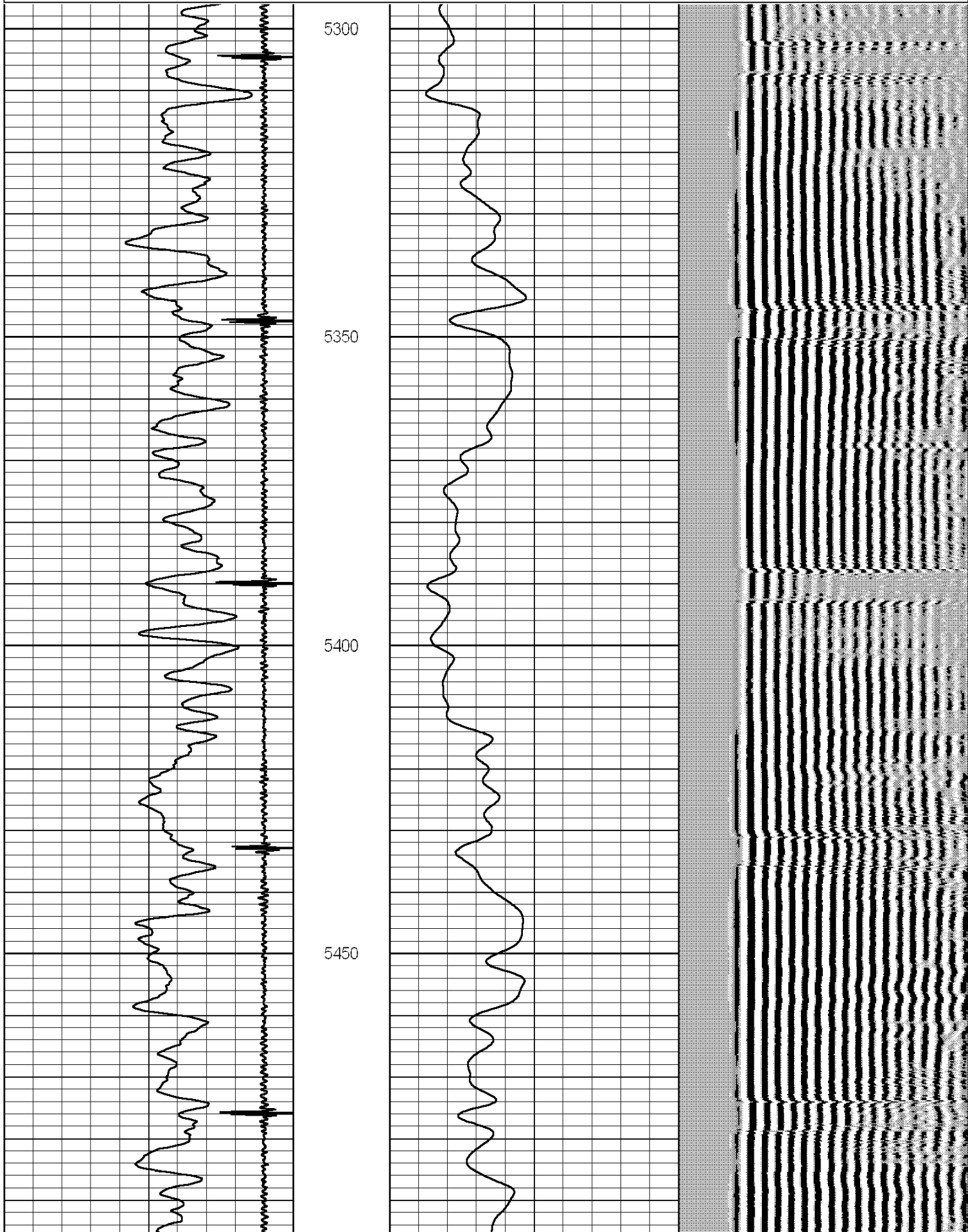
## MAIN PASS

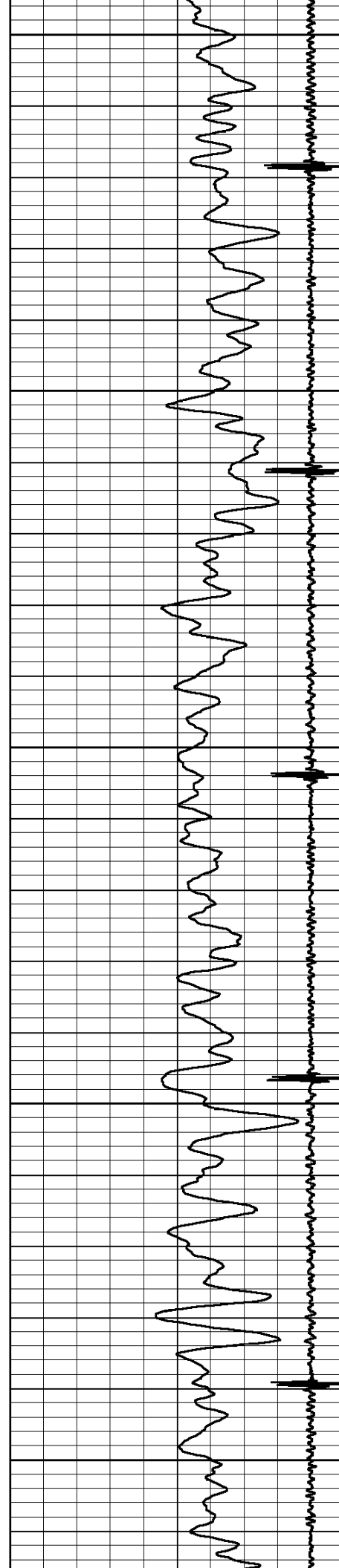
HALLIBURTON

SCALE: 5"=100'

Database File: encana\_baker\_6-4-27\_cbl.db  
Dataset Pathname: pass3  
Presentation Format: 1kacbl  
Dataset Creation: Thu Sep 30 10:09:18 2010 by Log Halliburton Casedho

9	Collar Locator	-1	LSPD	0	Amplified Amplitude (mV)	10	200	Variable Density	1200
0	Gamma Ray (GAPI)	200	(ft/min)	0	Amplitude (mV)	100			
			0 100						





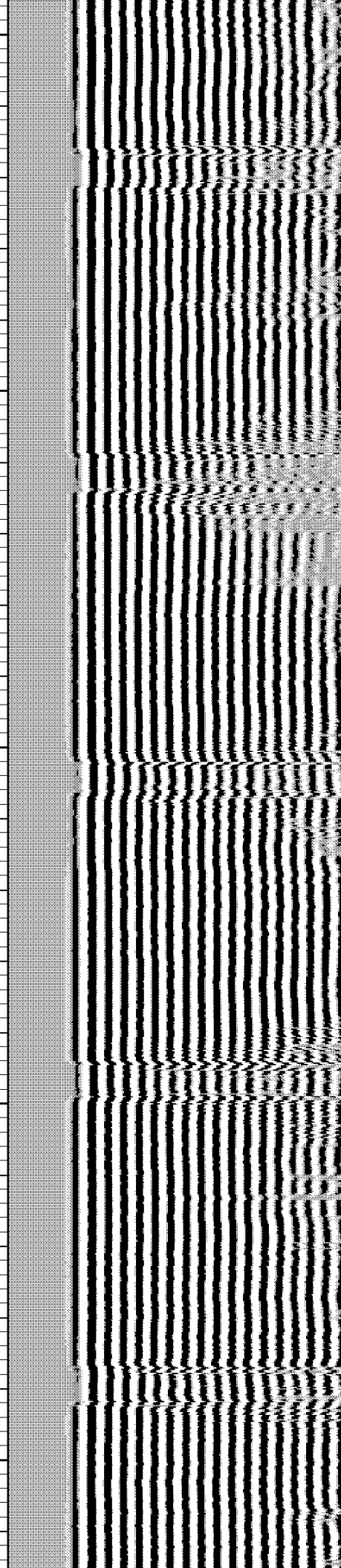
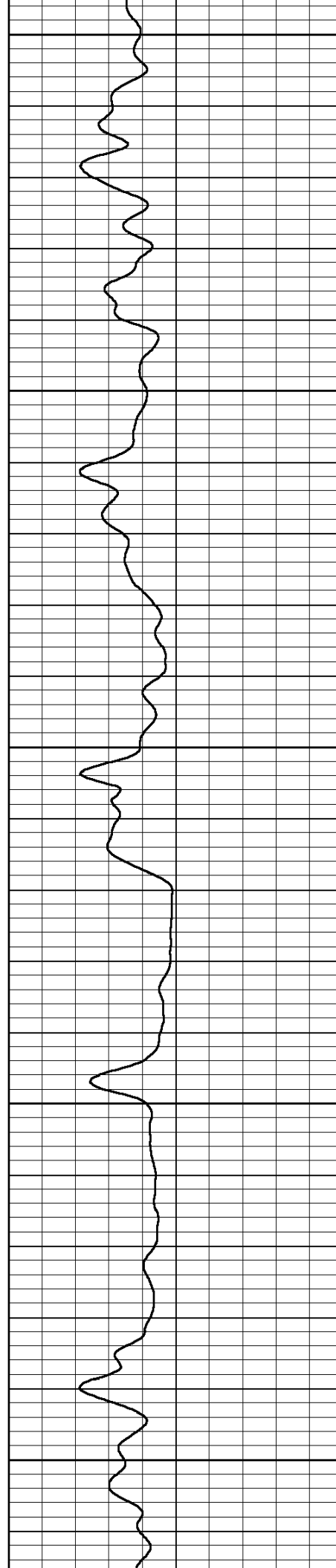
5500

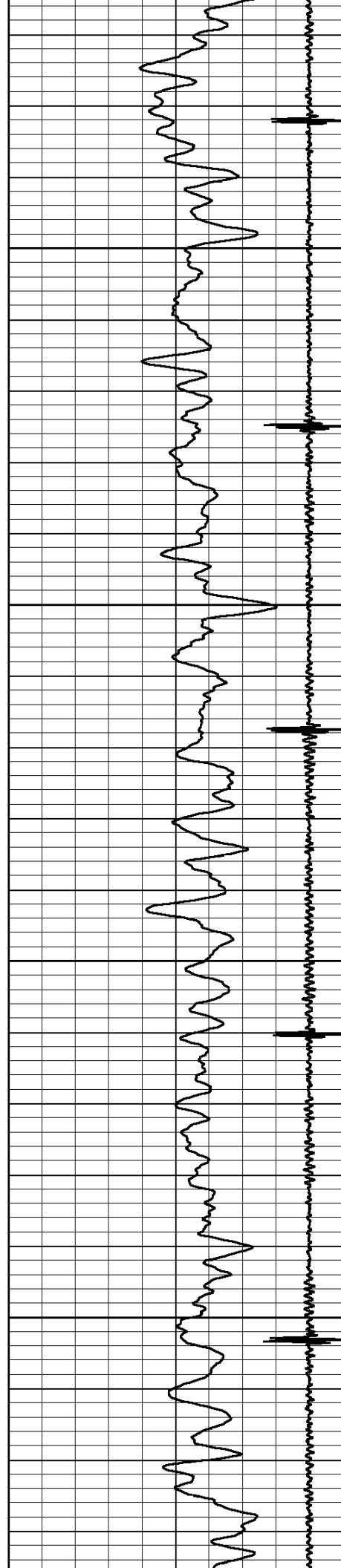
5550

5600

5650

5700



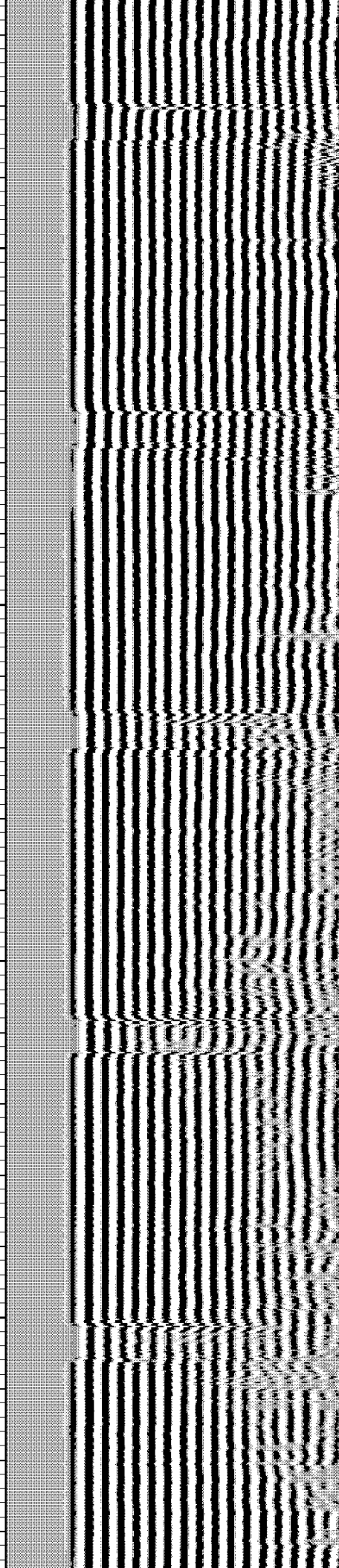
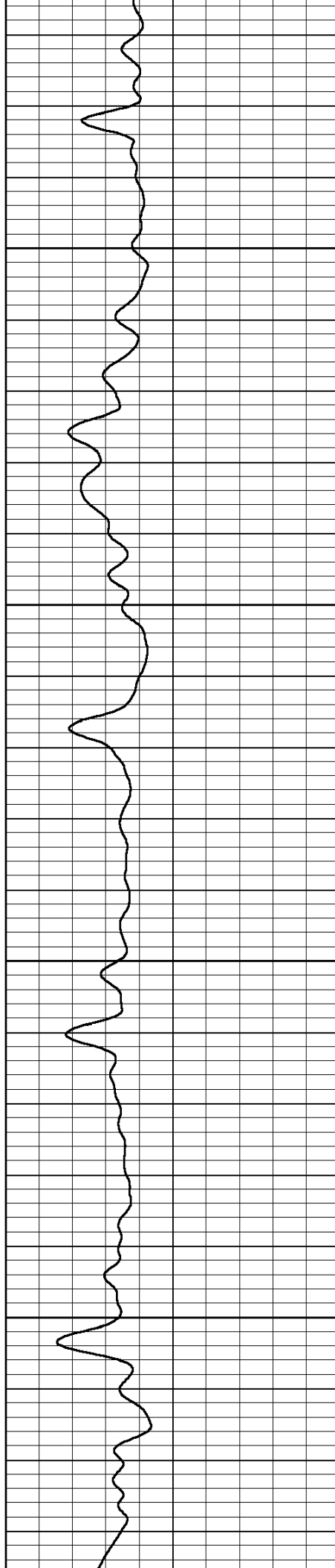


5750

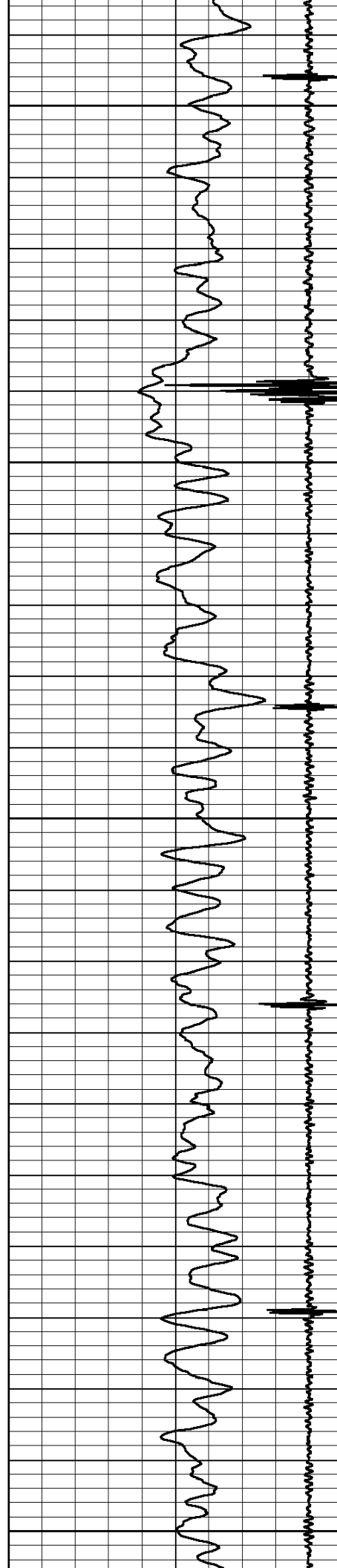
5800

5850

5900







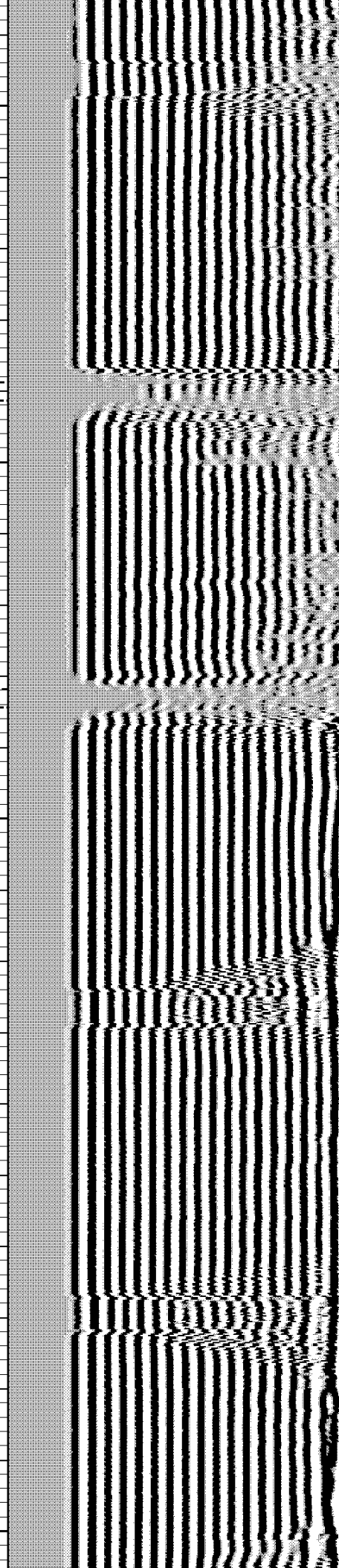
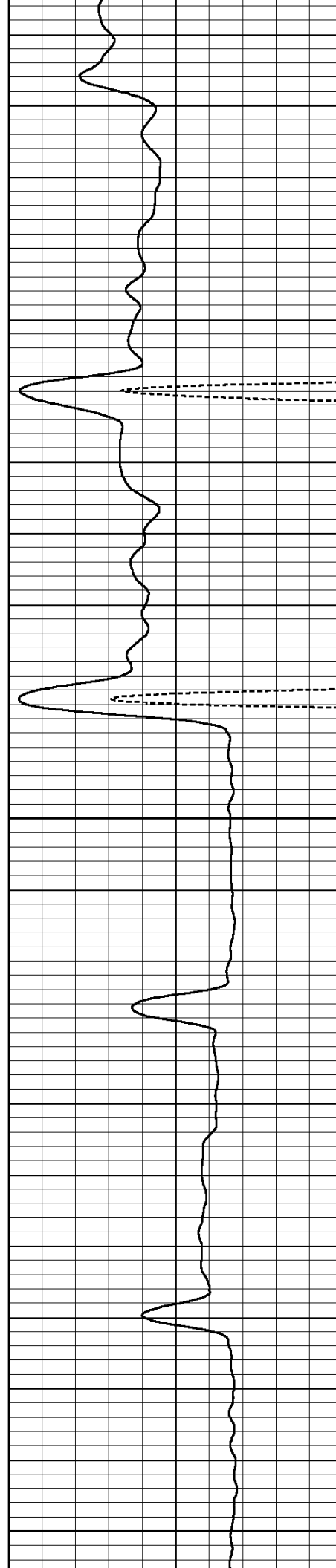
5950

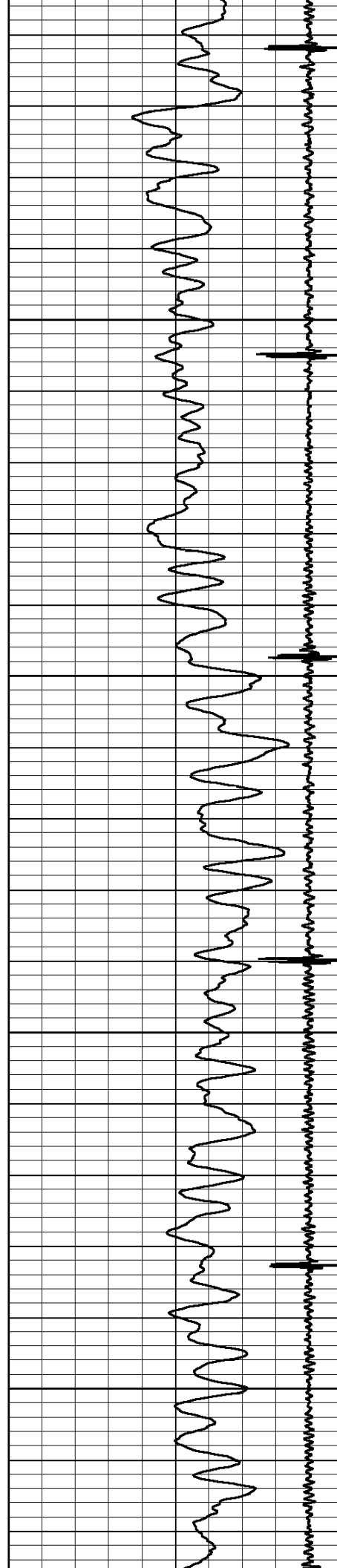
6000

6050

6100

6150



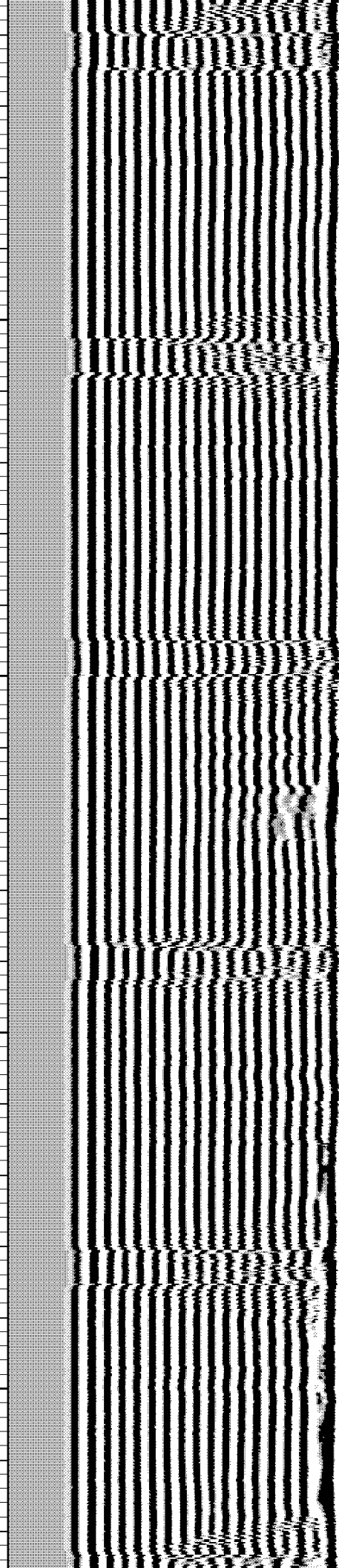
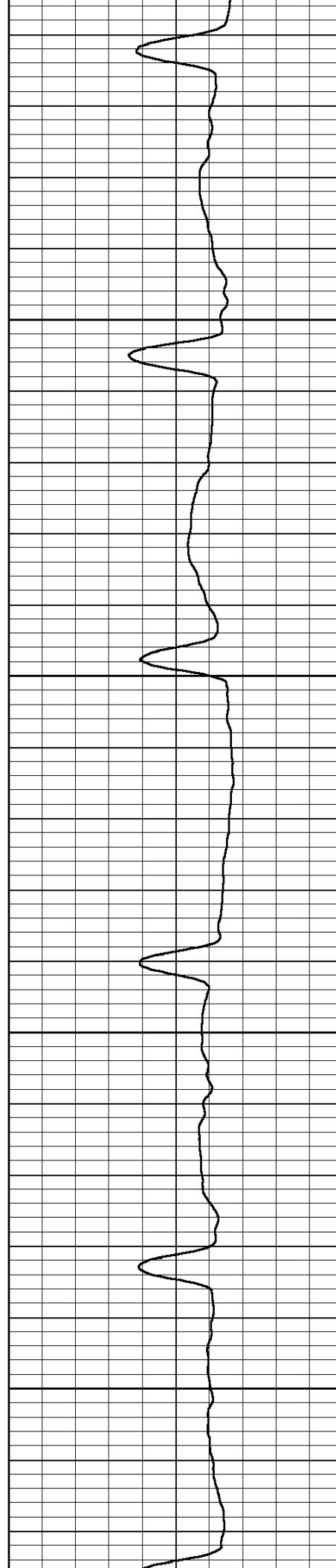


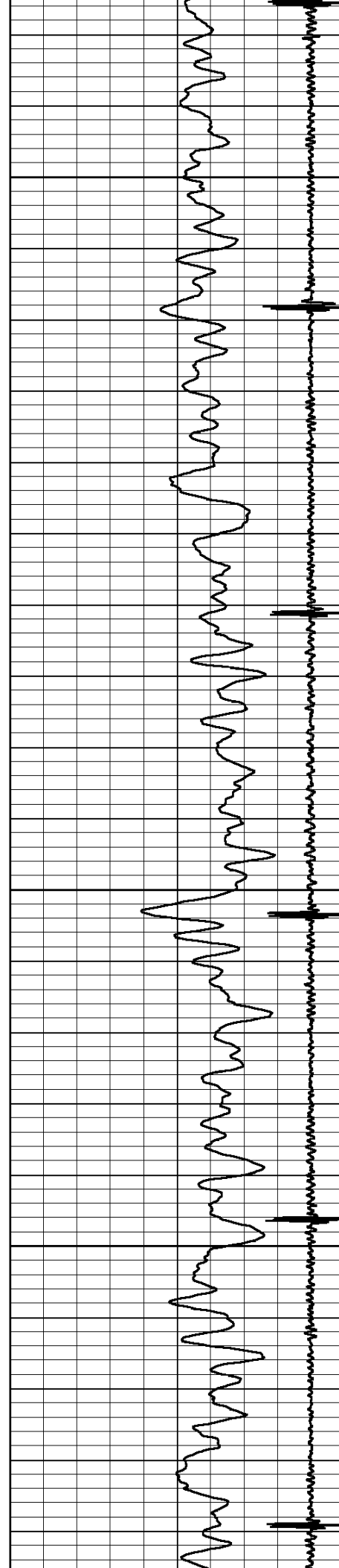
6200

6250

6300

6350



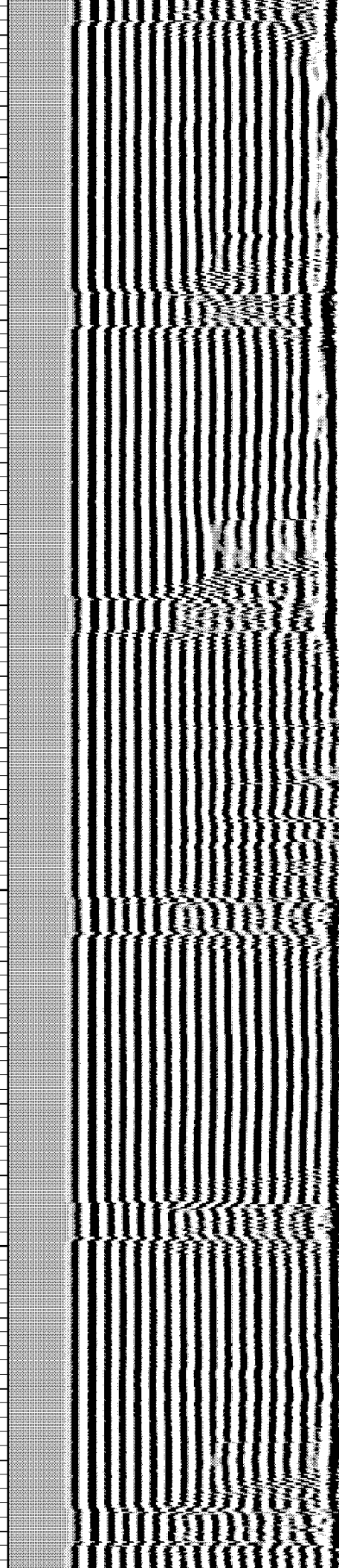
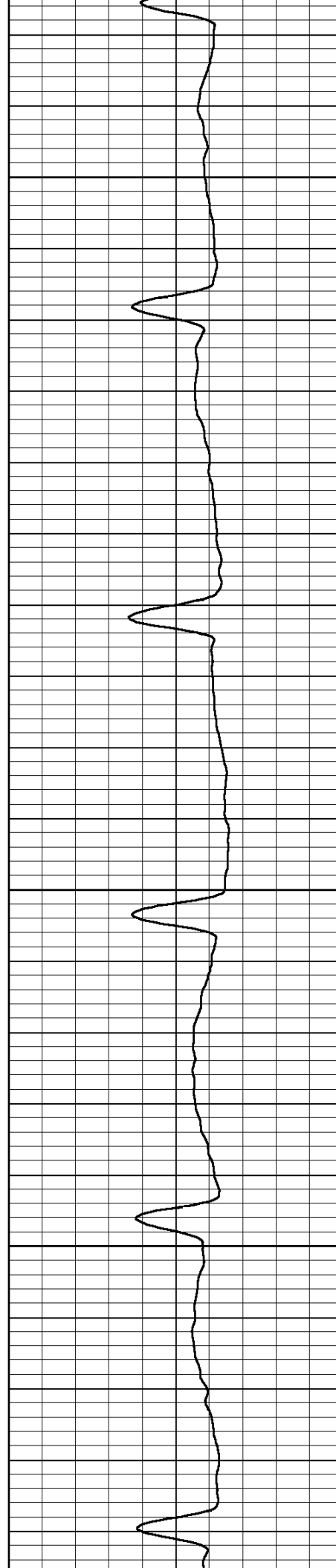


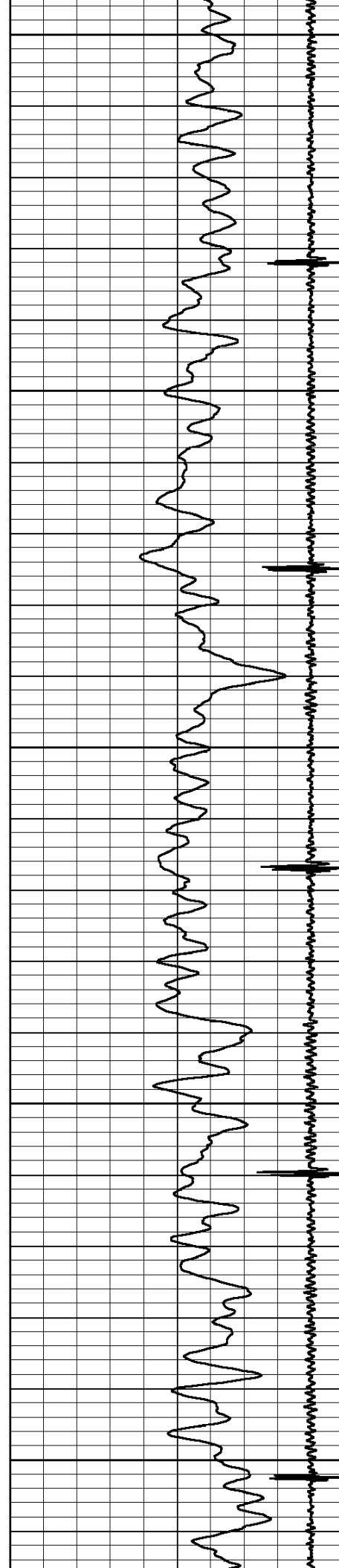
6400

6450

6500

6550





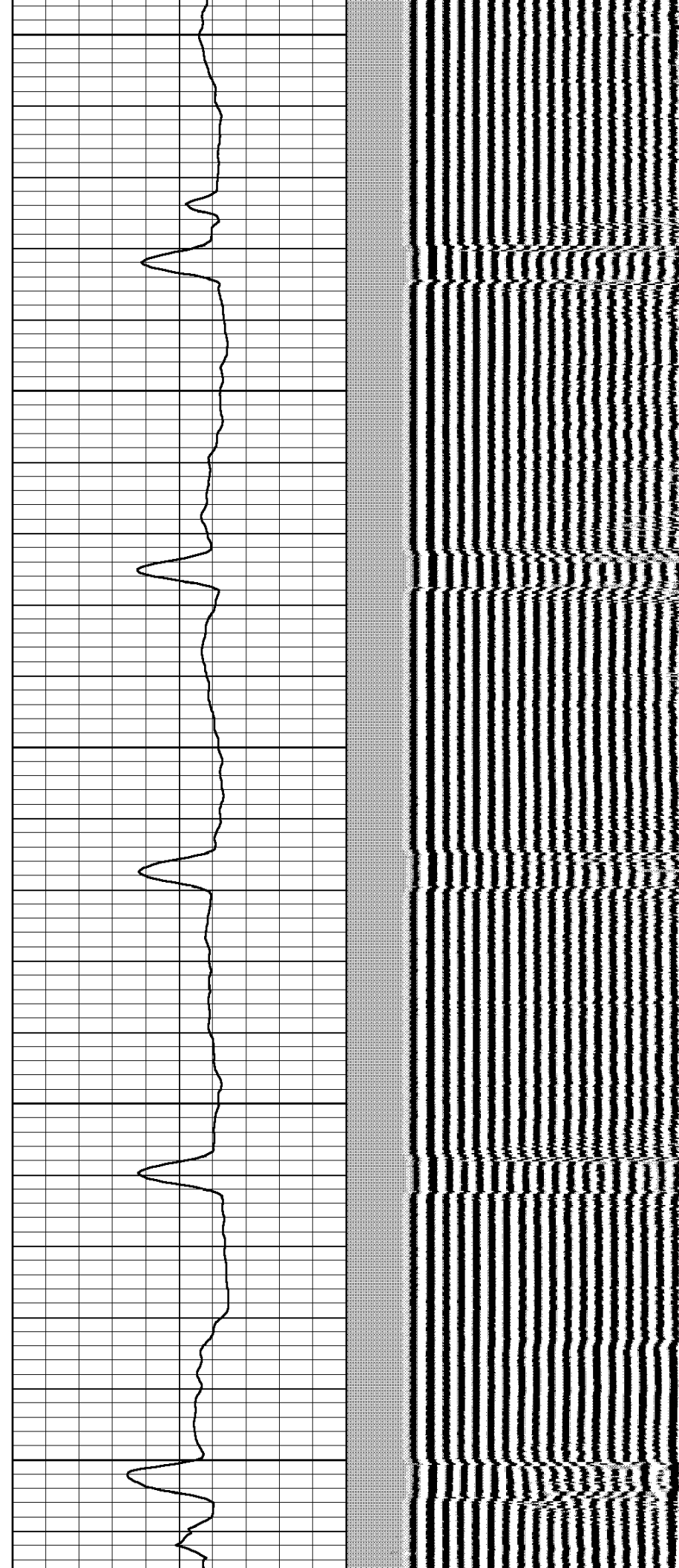
6600

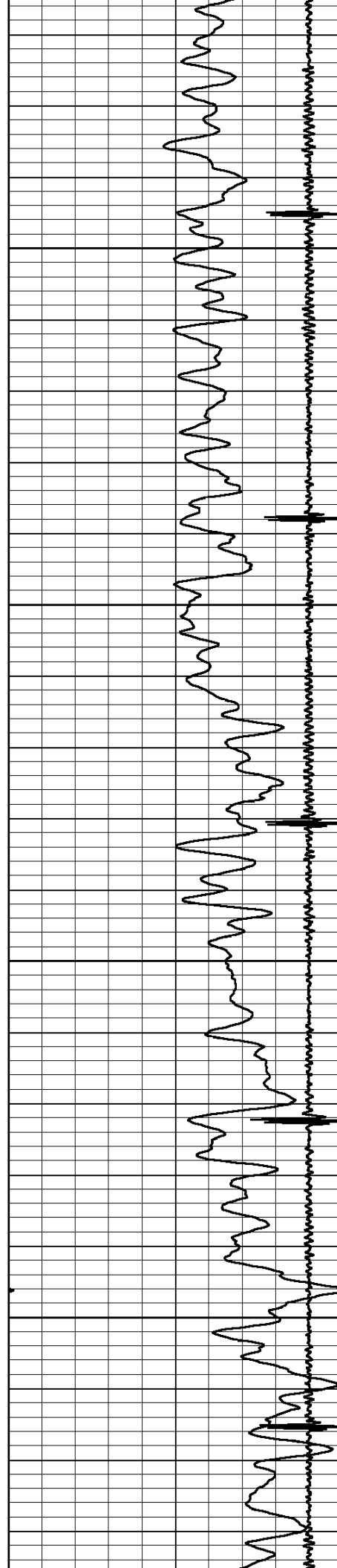
6650

6700

6750

6800



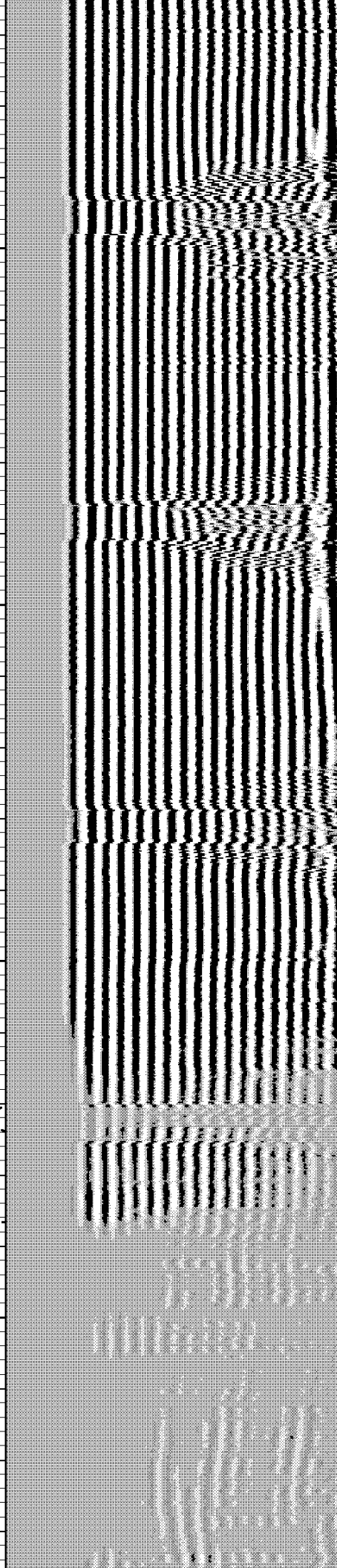
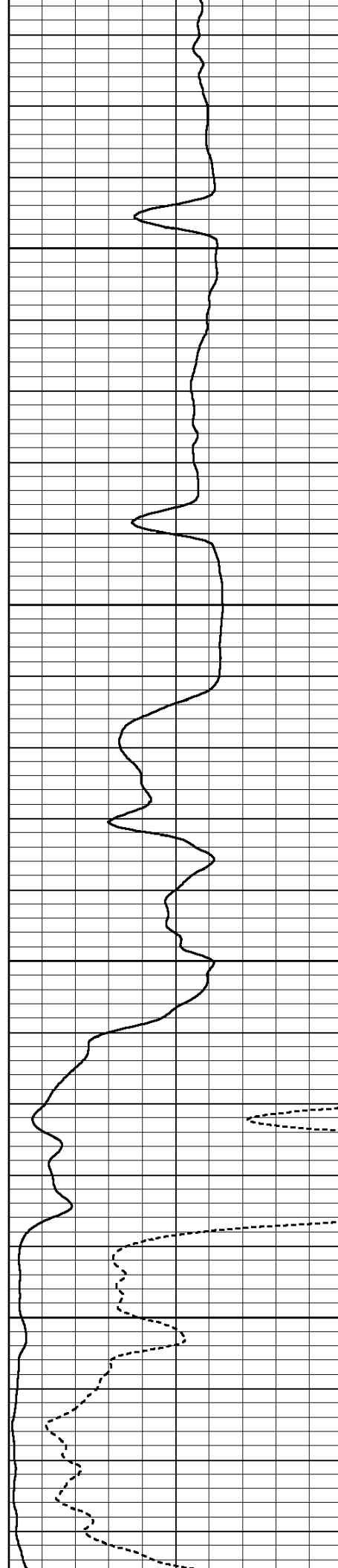


6850

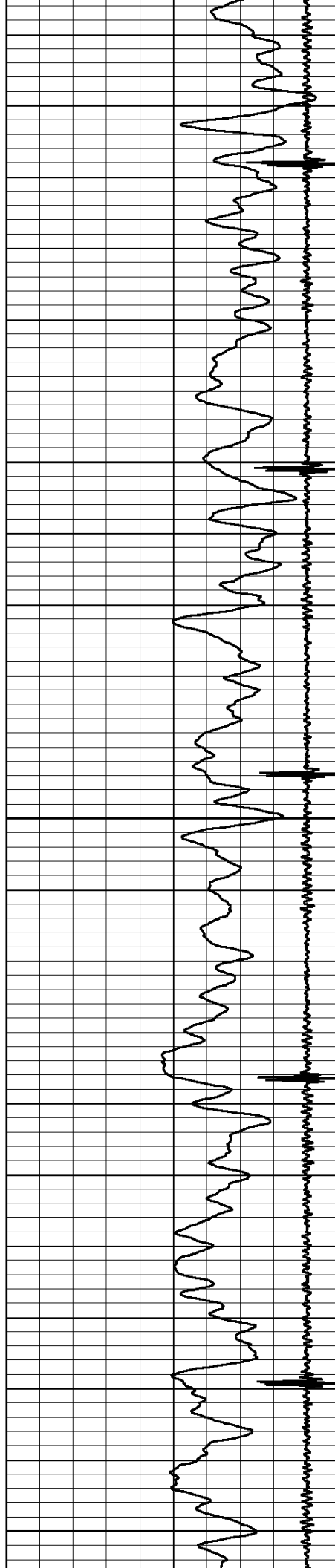
6900

6950

7000







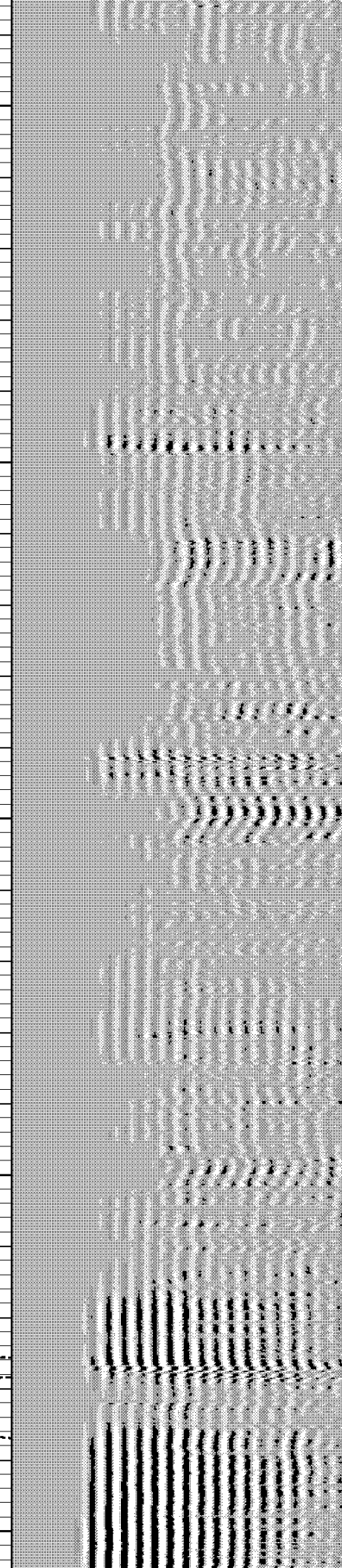
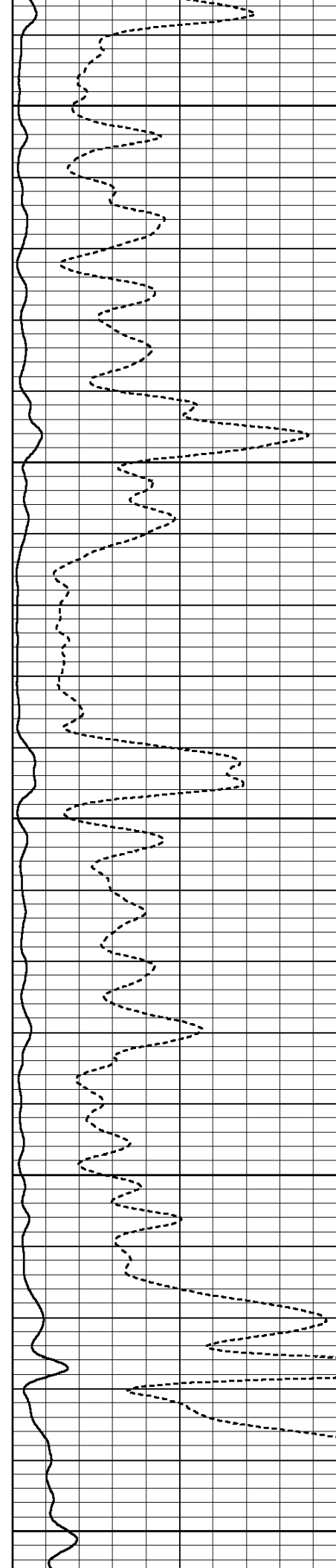
7050

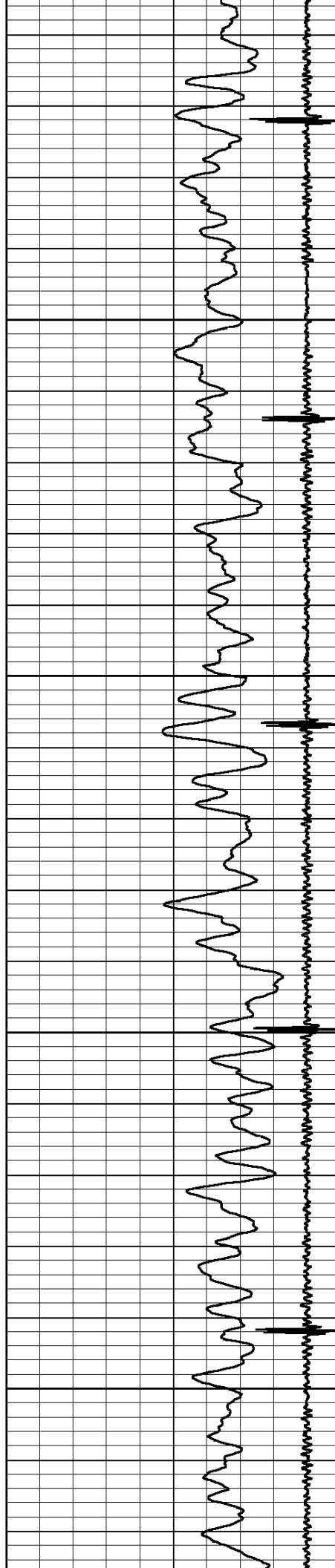
7100

7150

7200

7250



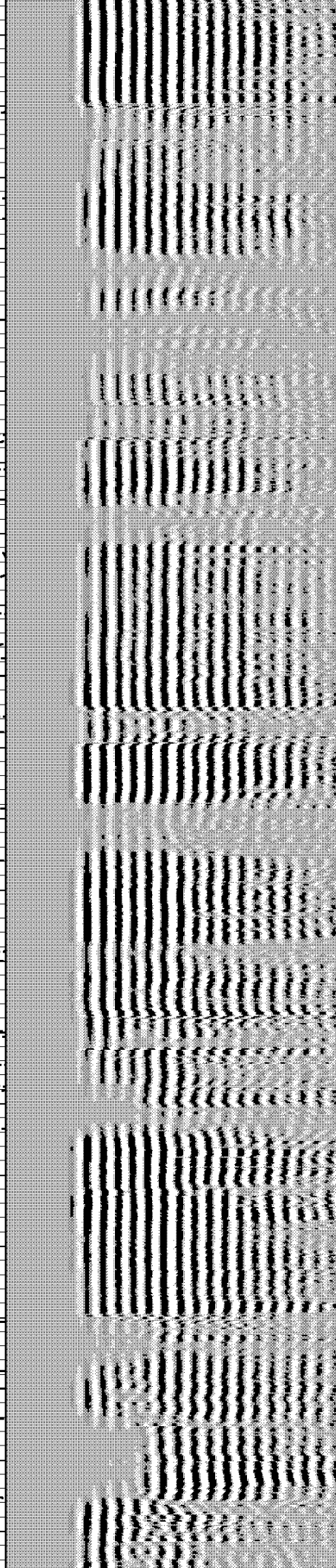
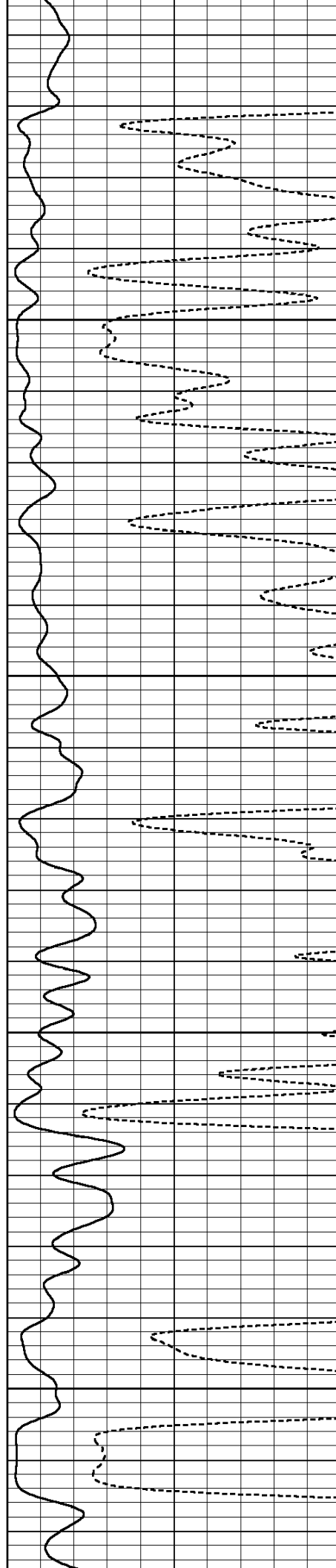


7300

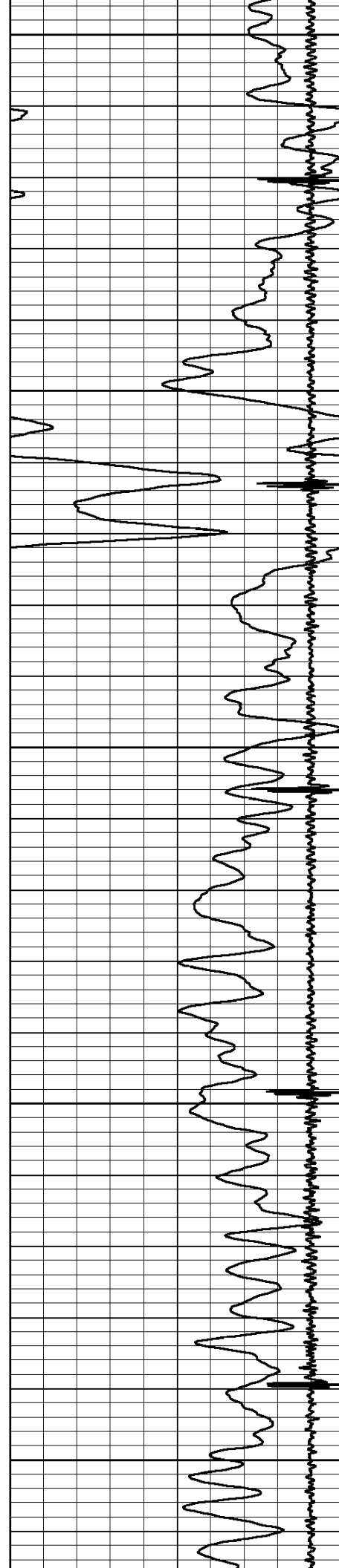
7350

7400

7450







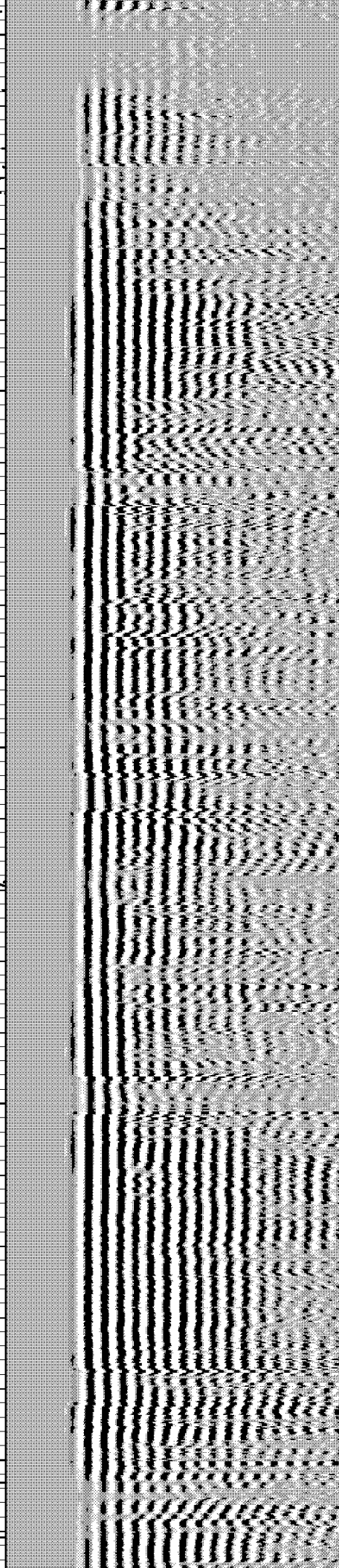
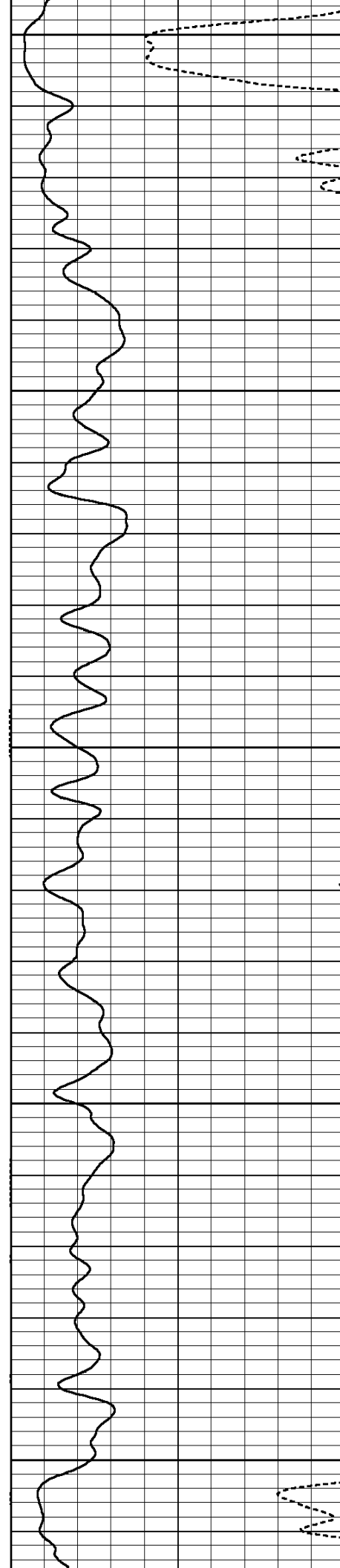
7700

7750

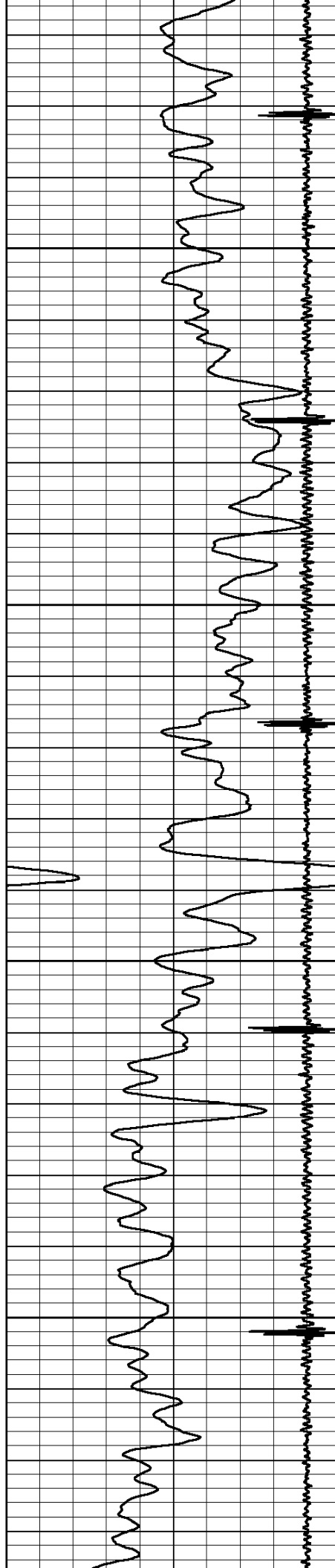
7800

7850

7900





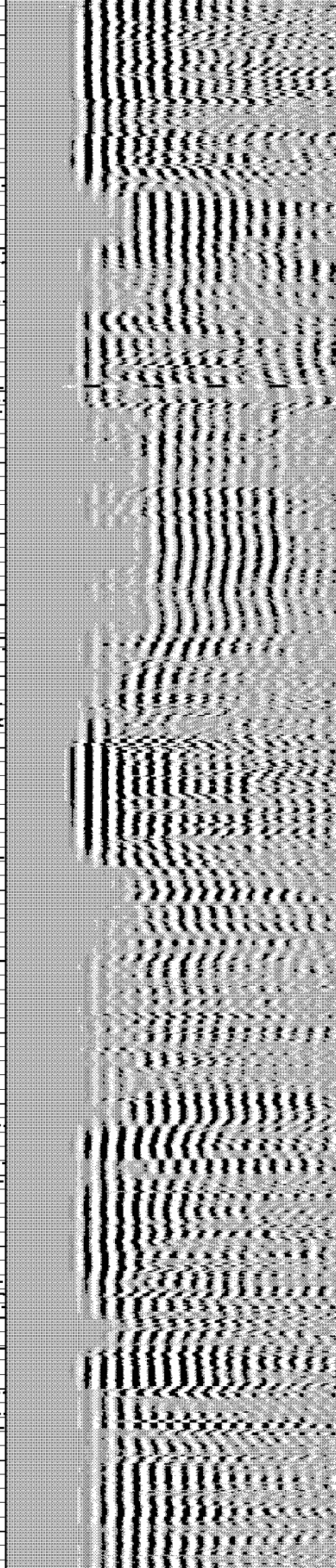
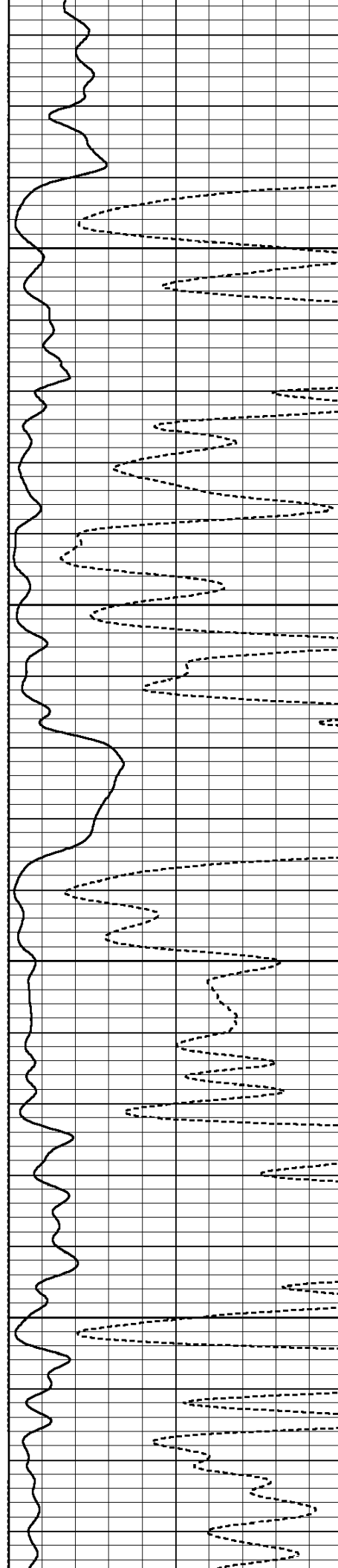


7950

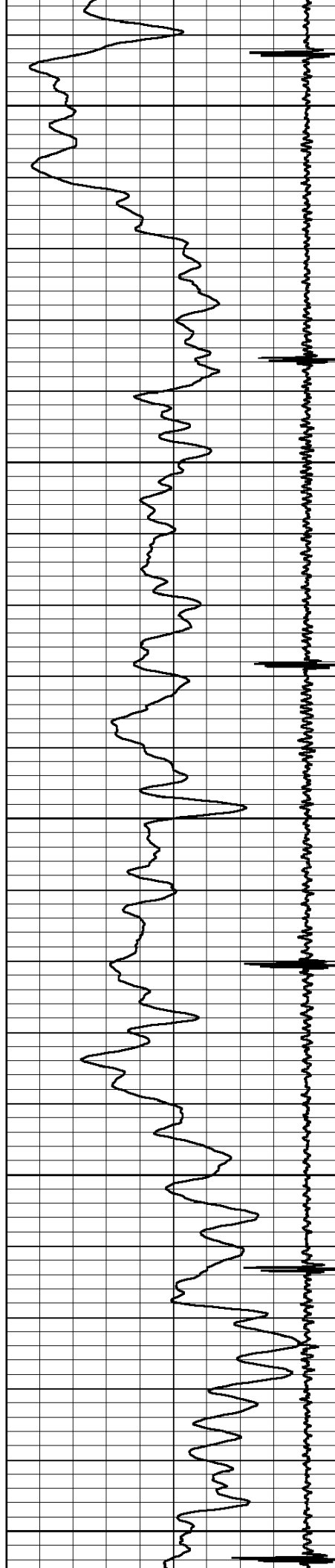
8000

8050

8100







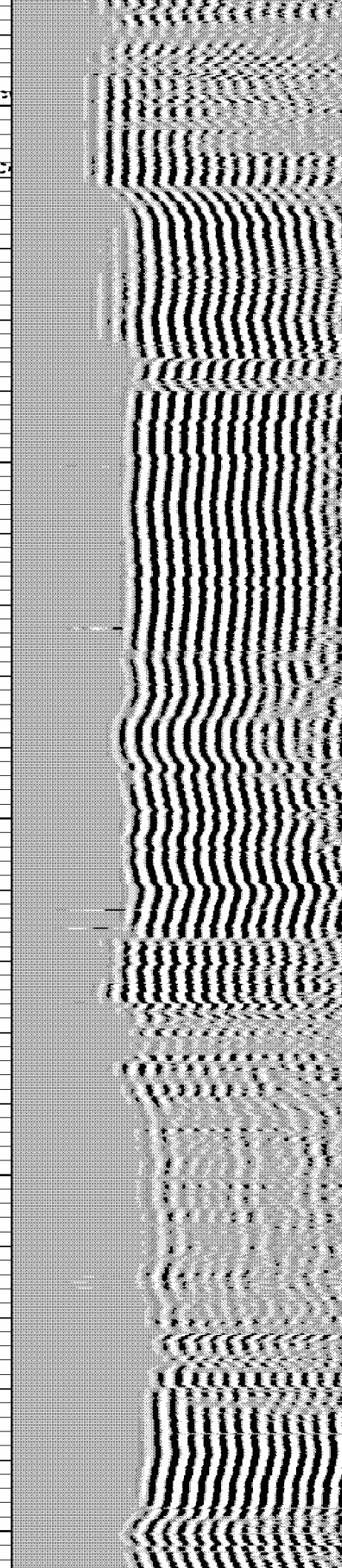
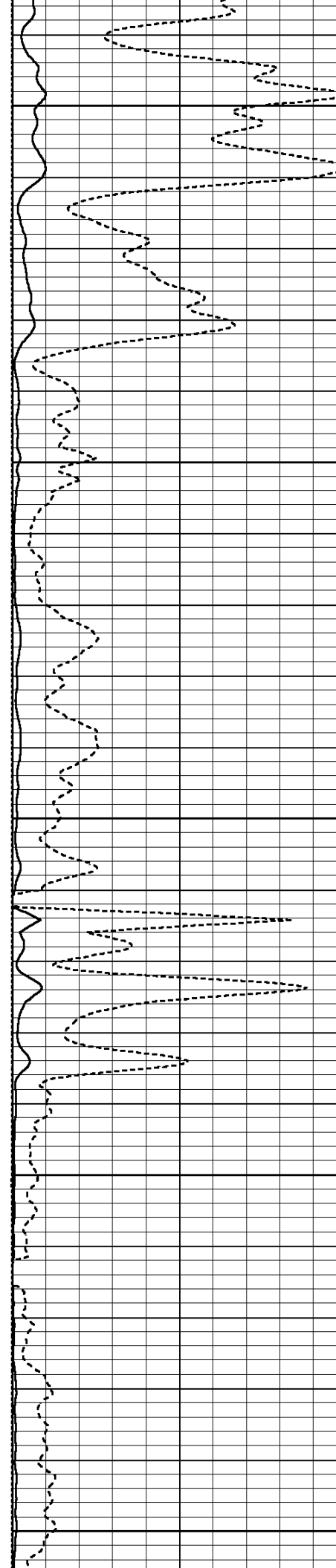
8150

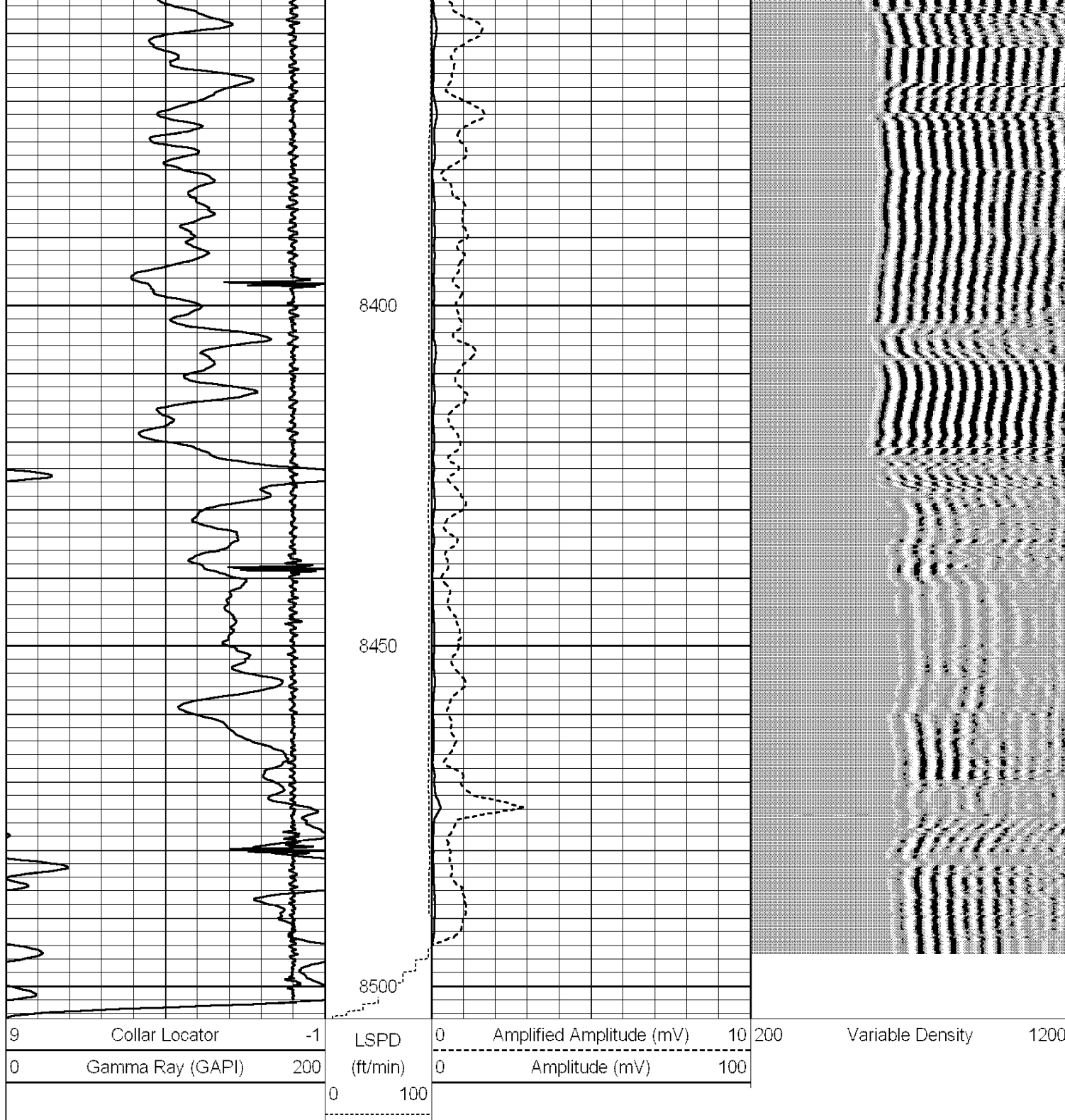
8200

8250

8300

8350





## MAIN PASS

SCALE: 5"=100'

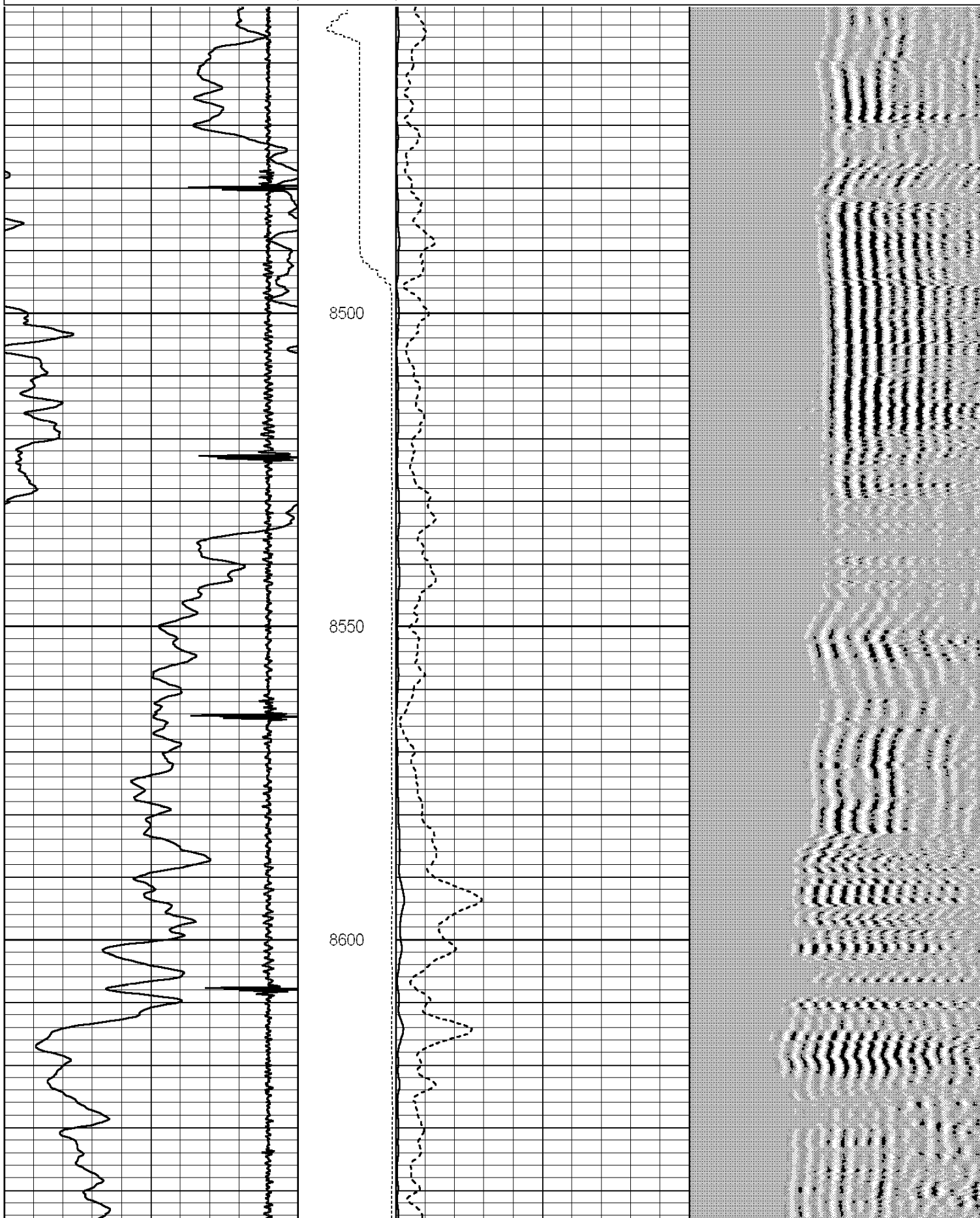
HALLIBURTON

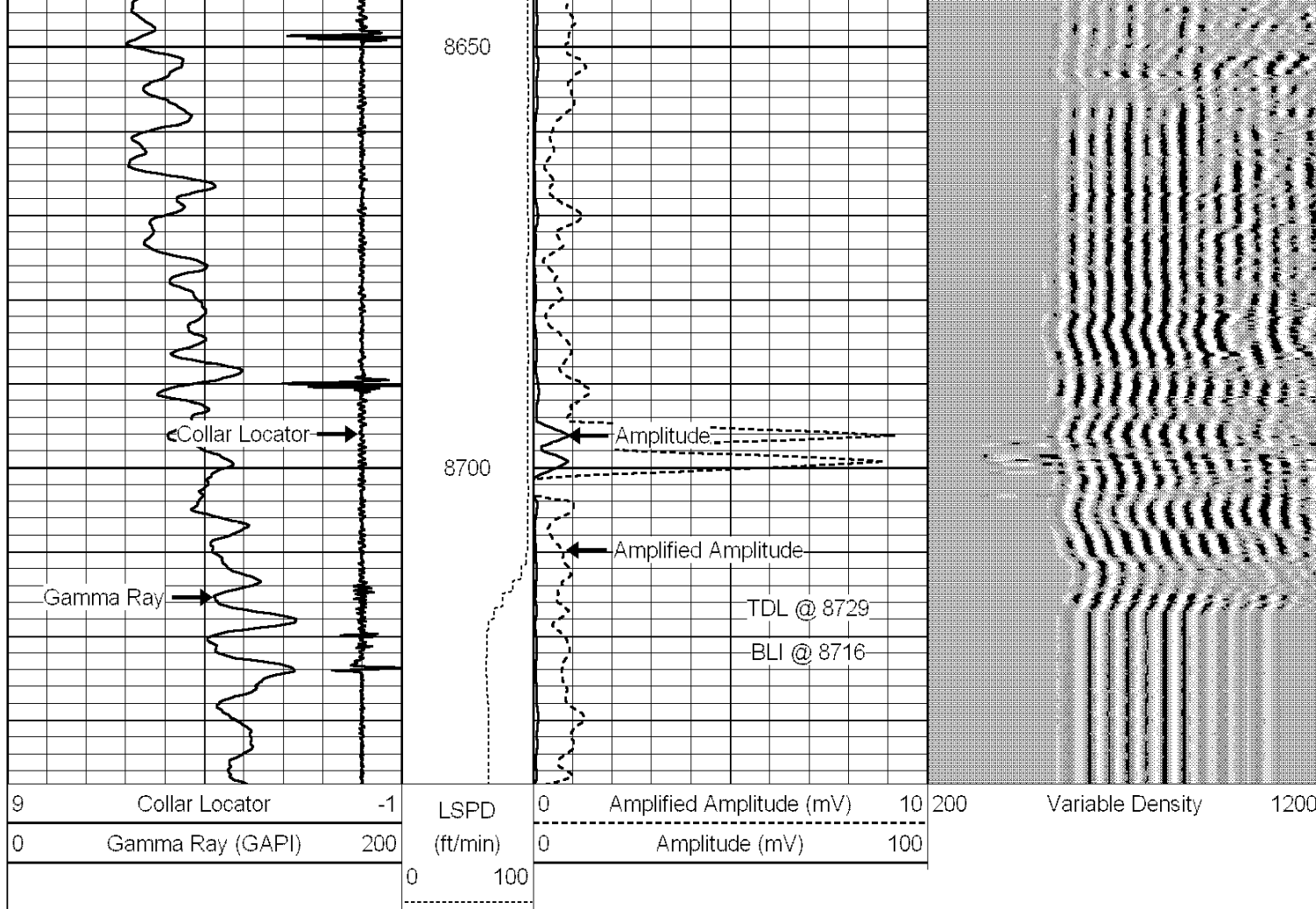
## J-SAND PASS

SCALE: 5"=100'

HALLIBURTON

9	Collar Locator	-1	LSPD	0	Amplified Amplitude (mV)	10	200	Variable Density	1200
0	Gamma Ray (GAPI)	200	(ft/min)	0	Amplitude (mV)	100			
			0	100					





## J-SAND PASS

**HALLIBURTON**

SCALE: 5"=100'

Company **ENCANA OIL & GAS USA INC.**

Well **BAKER 6-4-27**

Field **WATTENBERG**

County **WELD**

State **CO**

**HALLIBURTON**

**CEMENT BOND  
LOG**

SCALE: 5"=100'