

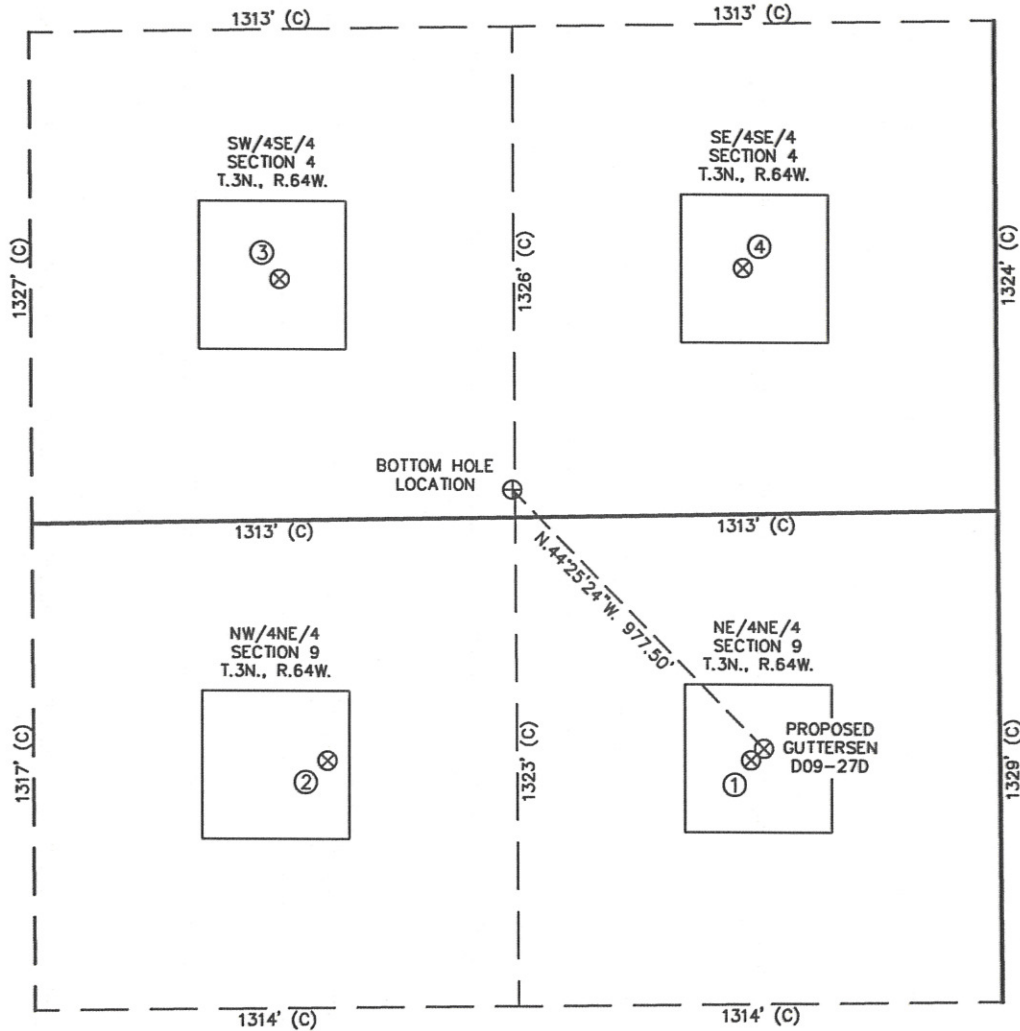
Cheyenne, Wyoming 82001

SECTIONS 9 & 4
TOWNSHIP 3 NORTH
RANGE 64 WEST



SITE SKETCH – GUTTERSEN D09-27D

SECTION 9
TOWNSHIP 3 NORTH
RANGE 64 WEST



①

KARCH WHITE
D9-1
NE/NE SEC. 9
665' FNL
677' FEL
EL 4719'
N 40.24544
W 104.54907
PDOP 3.3

②

GITTLEIN WHITE
D9-2
NW/NE SEC. 9
652' FNL
1829' FEL
EL 4720'
N 40.24546
W 104.55320
PDOP 1.6

③

MARIE D4-15
SW/SE SEC. 4
652' FSL
1951' FEL
EL 4718'
N 40.24904
W 104.55361
PDOP 1.7

④

MARIE D4-16
SE/SE SEC. 4
665' FSL
688' FEL
EL 4717'
N 40.24910
W 104.54909
PDOP 2.5



0 500

Scale: 1" = 500'

NOTES:

- 1) THIS SKETCH DOES NOT REPRESENT A BOUNDARY SURVEY.
- 2) THE DATUM FOR THE LATITUDES AND LONGITUDES ON THIS SKETCH IS NAD83.