
SAMSON RESOURCES CORP - EBUS

Ignacio 33-7 #16-4

Tulsa County , Oklahoma

Cement Surface Casing

04-Apr-2011

Job Site Documents



Cementing Job Summary

The Road to Excellence Starts with Safety

Sold To #: 345114				Ship To #: 2873314				Quote #:				Sales Order #: 8081148			
Customer: SAMSON RESOURCES CORP - EBUS								Customer Rep: Seidel, Frank							
Well Name: Ignacio				Well #: 33-7 #16-4				API/UWI #:							
Field:		City (SAP): IGNACIO				County/Parish: Tulsa				State: Oklahoma					
Legal Description: Section 33 Township 33N Range 97W															
Contractor: AWS				Rig/Platform Name/Num: AWS 507											
Job Purpose: Cement Surface Casing															
Well Type: Development Well				Job Type: Cement Surface Casing											
Sales Person: SCOTT, KYLE				Srvc Supervisor: WOOD, BRANDON				MBU ID Emp #: 412753							
Job Personnel															
HES Emp Name		Exp Hrs	Emp #	HES Emp Name		Exp Hrs	Emp #	HES Emp Name		Exp Hrs	Emp #				
JONES, DAVID Michael		5.5	409749	TYLER, LUTHER		5.5	375283	WOOD, BRANDON M		5.5	412753				
Equipment															
HES Unit #		Distance-1 way		HES Unit #		Distance-1 way		HES Unit #		Distance-1 way					
10011433C		49 mile		10829466		49 mile		11223557		49 mile					
Job Hours															
Date	On Location Hours		Operating Hours		Date	On Location Hours		Operating Hours		Date	On Location Hours		Operating Hours		
TOTAL					Total is the sum of each column separately										
Job								Job Times							
Formation Name										Date	Time	Time Zone			
Formation Depth (MD)		Top				Bottom			Called Out	04 - Apr - 2011	15:30	MST			
Form Type					BHST				On Location	04 - Apr - 2011	18:10	MST			
Job depth MD		357.5 ft			Job Depth TVD		311.2 ft		Job Started	04 - Apr - 2011	00:00	MST			
Water Depth					Wk Ht Above Floor		3.5 ft		Job Completed	04 - Apr - 2011	00:00	MST			
Perforation Depth (MD)		From				To			Departed Loc	04 - Apr - 2011	00:00	MST			
Well Data															
Description		New / Used	Max pressure psig	Size in	ID in	Weight lbm/ft	Thread		Grade	Top MD ft	Bottom MD ft	Top TVD ft	Bottom TVD ft		
12-1/4" Surface Open Hole					12.25					.	350.				
8-5/8" Surface Casing		Unknown		8.625	8.097	24.			J-55	.	350.				
Sales/Rental/3 rd Party (HES)															
Description								Qty	Qty uom	Depth	Supplier				
PLUG,CMTG,TOP,8 5/8,HWE,7.20 MIN/8.09 MA								1	EA						
Tools and Accessories															
Type	Size	Qty	Make	Depth	Type	Size	Qty	Make	Depth	Type	Size	Qty	Make		
Guide Shoe					Packer					Top Plug					
Float Shoe					Bridge Plug					Bottom Plug					
Float Collar					Retainer					SSR plug set					
Insert Float										Plug Container					
Stage Tool										Centralizers					
Miscellaneous Materials															
Gelling Agt			Conc		Surfactant			Conc		Acid Type		Qty		Conc	%
Treatment Fld			Conc		Inhibitor			Conc		Sand Type		Size		Qty	

Fluid Data										
Stage/Plug #: 1										
Fluid #	Stage Type	Fluid Name	Qty	Qty uom	Mixing Density lbm/gal	Yield ft ³ /sk	Mix Fluid Gal/sk	Rate bbl/min	Total Mix Fluid Gal/sk	
1	Water Spacer		20.00	bbl	8.33	.0	.0	.0		
2	Surface Cement	CMT - PREMIUM - CLASS G, 94 LB SK (100003685)	270.0	sacks	15.8	1.17	5.0		5.0	
	94 lbm	CMT - PREMIUM - CLASS G REG OR TYPE V, BULK (100003685)								
	2 %	CALCIUM CHLORIDE - HI TEST PELLET (100005053)								
	0.125 lbm	POLY-E-FLAKE (101216940)								
	4.998 Gal	FRESH WATER								
3	Displacement		19.00	bbl	8.33	.0	.0	.0		
Calculated Values		Pressures		Volumes						
Displacement	19.8	Shut In: Instant		Lost Returns	no	Cement Slurry	56.3	Pad		
Top Of Cement	Surface	5 Min		Cement Returns	20	Actual Displacement	20	Treatment		
Frac Gradient		15 Min		Spacers		Load and Breakdown		Total Job		
Rates										
Circulating	2	Mixing	4	Displacement	5	Avg. Job	3.5			
Cement Left In Pipe	Amount	46.37 ft	Reason	Shoe Joint						
Frac Ring # 1 @	ID		Frac ring # 2 @	ID		Frac Ring # 3 @	ID		Frac Ring # 4 @	ID
The Information Stated Herein Is Correct				Customer Representative Signature						

The Road to Excellence Starts with Safety

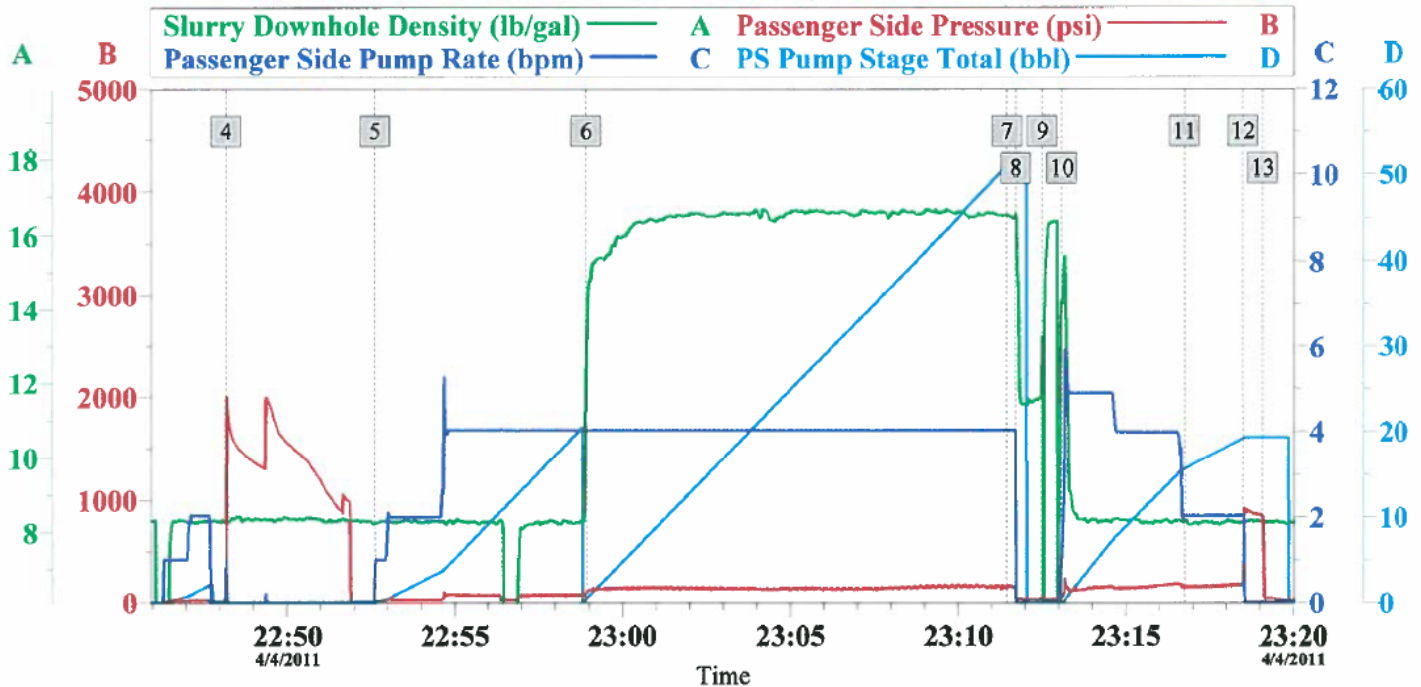
Sold To #: 345114	Ship To #: 2847314	Quote #:	Sales Order #: 8081148
Customer: SAMSON RESOURCES CORP - EBUS		Customer Rep: Seidel, Frank	
Well Name: Ignacio	Well #: 33-7 #16-4	API/UWI #:	
Field:	City (SAP): IGNACIO	County/Parish: Tulsa	State: Oklahoma
Legal Description: Section 33 Township 33N Range 97W			
Lat:		Long:	
Contractor: AWS		Rig/Platform Name/Num: AWS 507	
Job Purpose: Cement Surface Casing			Ticket Amount:
Well Type: Development Well		Job Type: Cement Surface Casing	
Sales Person: SCOTT, KYLE		Srv Supervisor: WOOD, BRANDON	MBU ID Emp #: 412753

Activity Description	Date/Time	Cht #	Rate bbl/min	Volume bbl		Pressure psig		Comments
				Stage	Total	Tubing	Casing	
Call Out	04/04/2011 15:30							
Depart Yard Safety Meeting	04/04/2011 16:55							SAFETY MEETING INVOLVING THE CMT CREW
Crew Leave Yard	04/04/2011 17:00							
Arrive At Loc	04/04/2011 18:10							1- F-450 10829466, 1- RED TIGER PUMP TRUCK 11223557, 1- 660 BULK TRUCK TRAILERS
Assessment Of Location Safety Meeting	04/04/2011 18:15							ASSESSMENT OF LOCATION INVOLVING THE CMT CREW
Pre-Rig Up Safety Meeting	04/04/2011 20:00							SAFETY MEETING INVOLVING THE ENTIRE CMT/ RIG CREW
Rig-Up Equipment	04/04/2011 20:05							
Pre-Job Safety Meeting	04/04/2011 21:30							SAFETY MEETING INVOLVING EVERYONE ON LOCATION
Start Job	04/04/2011 21:48							TD 364 FT, TP 357.53 FT, FC 311.16 FT, SJ 46.37 FT, 8 5/8 24 # J-55 CSG, 12 1/4 OH, CALCULATED 111.4 PSI TO LIFT PIPE OUT OF HOLE
Test Lines	04/04/2011 21:49		0.5		2		1500.0	PRESSURE TEST GOOD TO 1500 PSI
Pump Spacer 1	04/04/2011 21:53		2		20		30.0	PUMP 20 BBL FRESH WATER SPACER

Activity Description	Date/Time	Cht #	Rate bbl/min	Volume bbl		Pressure psig		Comments
				Stage	Total	Tubing	Casing	
Pump Cement	04/04/2011 21:59		4		56.3		139.0	270 SKS, 1.17 YLD, 5.0 GAL H2O/SK, 56.3 BBLS @ 15.8 #, 32.1 BBLS H2O REQ
Cement Returns to Surface	04/04/2011 22:11				20			CALCULATED SHOULD CIRCULATE 27 BBLS CEMENT RETURNS TO SURFACE, ACTUALLY CIRCULATED 20 BBLS
Shutdown	04/04/2011 22:12							SHUT DOWN TO DROP TOP PLUG
Drop Top Plug	04/04/2011 22:12							TATTLE TAIL INDICATED PLUG LEFT THE PLUG CONTAINER
Pump Displacement	04/04/2011 22:13		5		19.8		120.0	CALCULATED 19.8 BBLS DISPLACEMENT, ACTUALLY PUMPED 20 BBLS ON TANKS MARK TO MARK TO BUMP PLUG
Slow Rate	04/04/2011 22:17		2					SLOW RATE 2 BBL MIN THE LAST 5 BBLS OF DISPLACEMENT TO LAND THE PLUG
Bump Plug	04/04/2011 22:18		2				180.0	CALCULATED 120.8 PSI DIFFERENTIAL WHEN PLUG LANDS, PLUG BUMPED @ 180 PSI
Check Floats	04/04/2011 22:19						850.0	PRESSURED UP TO 850 PSI, RELEASED PRESSURE FLOATS HELD, FLOWED BACK .25 BBLS
End Job	04/04/2011 22:20							GOOD CIRCULATION THROUGHOUT THE ENTIRE CMT JOB, NO PIPE MOVEMENT,
Pre-Rig Down Safety Meeting	04/04/2011 22:25							SAFETY MEETING INVOLVING THE CMT/RIG CREW
Rig-Down Equipment	04/04/2011 22:30							
Safety Meeting - Departing Location	04/04/2011 23:25							SAFETY MEETING INVOLVING THE CMT CREW

Activity Description	Date/Time	Cht #	Rate bbl/ min	Volume bbl		Pressure psig		Comments
				Stage	Total	Tubing	Casing	
Depart Location for Service Center or Other Site	04/04/2011 23:30							THANK YOU FOR USING HALLIBURTON, BRANDON WOOD AND CREW

SAMSON IGNACIO 32-7 # 16-4, SURFACE



Global Event Log

4	Test Lines	22:48:12	5	Pump Spacer 1	22:52:37	6	Pump Cement	22:58:54
7	Cement Returns to Surface	23:11:27	8	Shutdown	23:11:43	9	Drop Plug	23:12:30
10	Pump Displacement	23:13:05	11	Slow Rate	23:16:45	12	Bump Plug	23:18:30
13	Check Floats	23:19:05						

Customer: SAMSON
Well Description: IGNACIO 32-7 # 16-4
Company rep: LARRY CANDELARIA

Job Date: 04-Apr-2011
JOB TYPE: SURFACE
SUPERVISOR: BRANDON WOOD

Sales Order #: 8081148
ADC USED: YES
OPERATOR/PUMP: DAVID JONES, 11223557

OptiCem v6.3.4
04-Apr-11 23:15