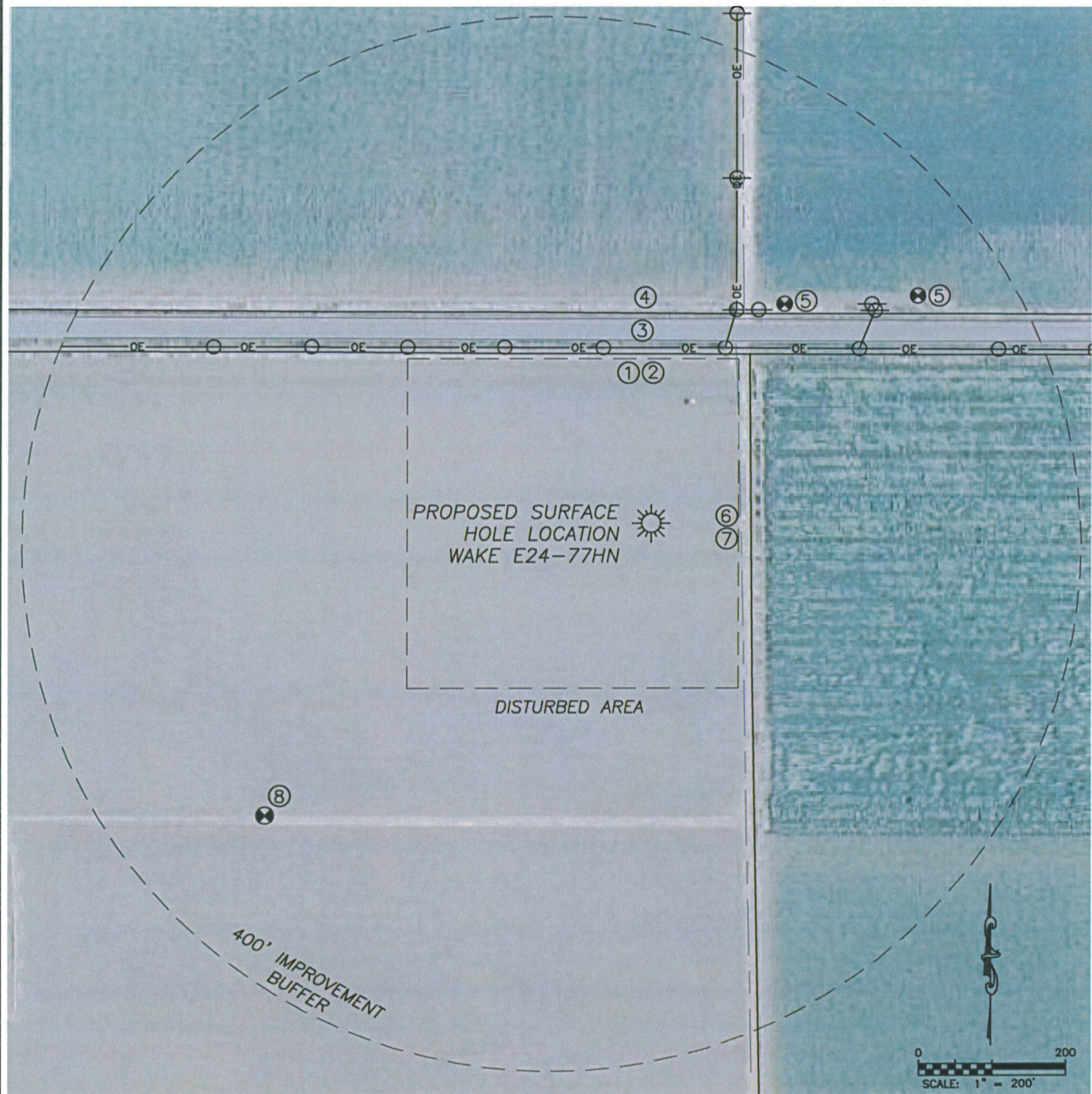


DALEY LAND SURVEYING, INC. PARKER, CO. 80134 303 953 9841

LOCATION DRAWING WAKE E24-77HN

SECTION 24, TOWNSHIP 6 NORTH, RANGE 65 WEST OF THE 6TH PRINCIPAL MERIDIAN



IMPROVEMENTS

1. CONC. DITCH:	232'± N	5. WATER WELL:	350'± NE
2. O.H. UTILITY:	240'± N		477'± NE
3. S EDGE HWY 392:	250'± N	6. FIELD ROAD:	122'± E
4. IRRIG. DITCH:	287'± N	7. CONC DITCH:	133'± E
		8. GAS WELL:	659'± SW

DISTANCE TO NEAREST:

BUILDING:	1000'± W
PUBLIC ROAD:	250'± N
ABOVE GRND UTILITY:	240'± N
RAILROAD:	5280'+
PROP. LINE:	236'± N