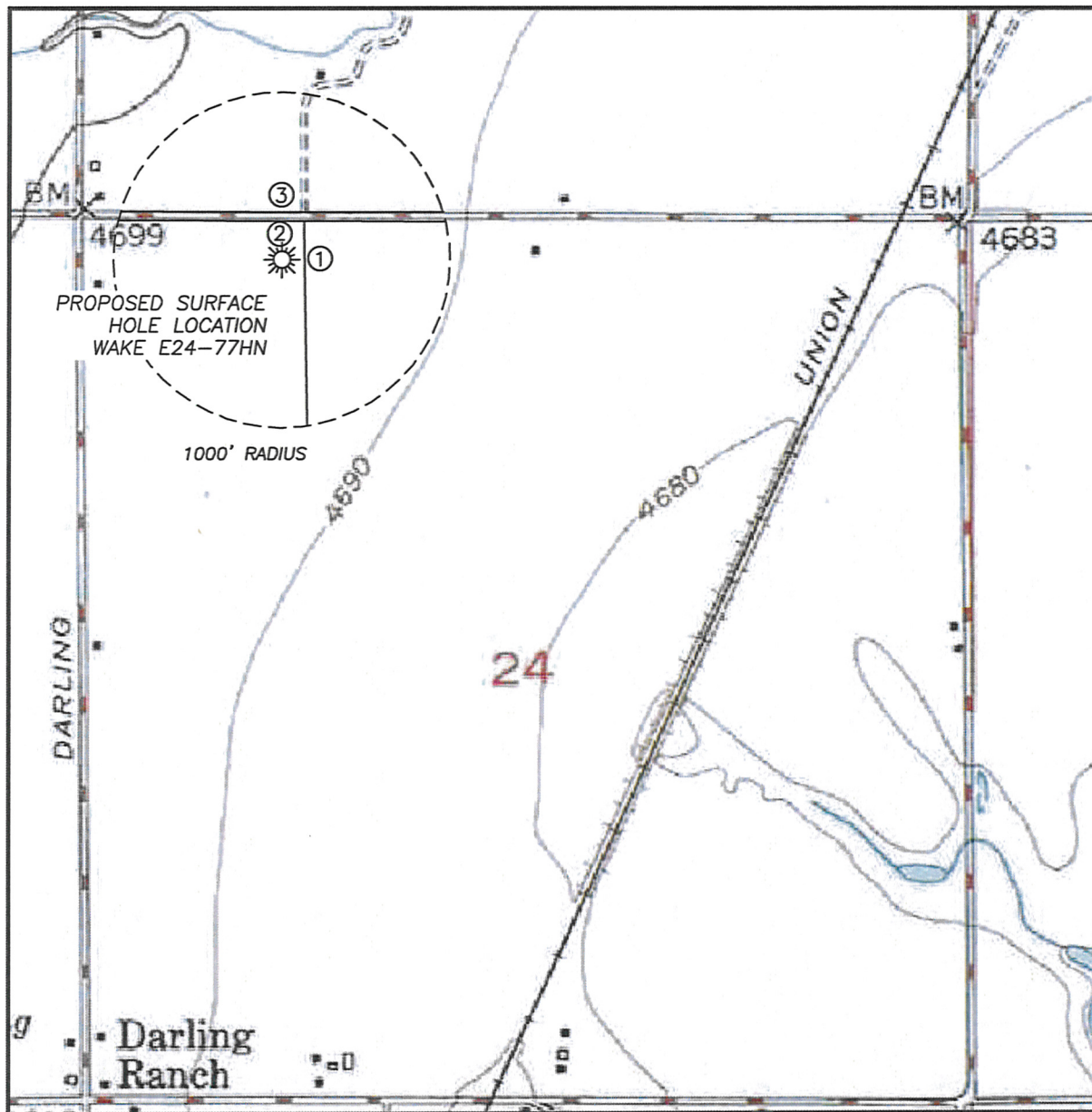


HYDROLOGY MAP WAKE E24-77HN

SECTION 24, TOWNSHIP 6 NORTH, RANGE 65 WEST OF THE 6TH PRINCIPAL MERIDIAN



SURFACE WATER

- | | |
|------------------|---------|
| 1. CONC. DITCH: | 133'± E |
| 2. CONC. DITCH: | 232'± N |
| 3. IRRIG. DITCH: | 287'± N |

